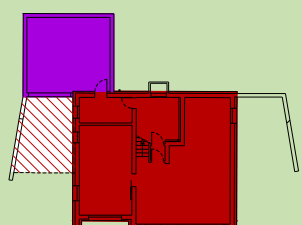
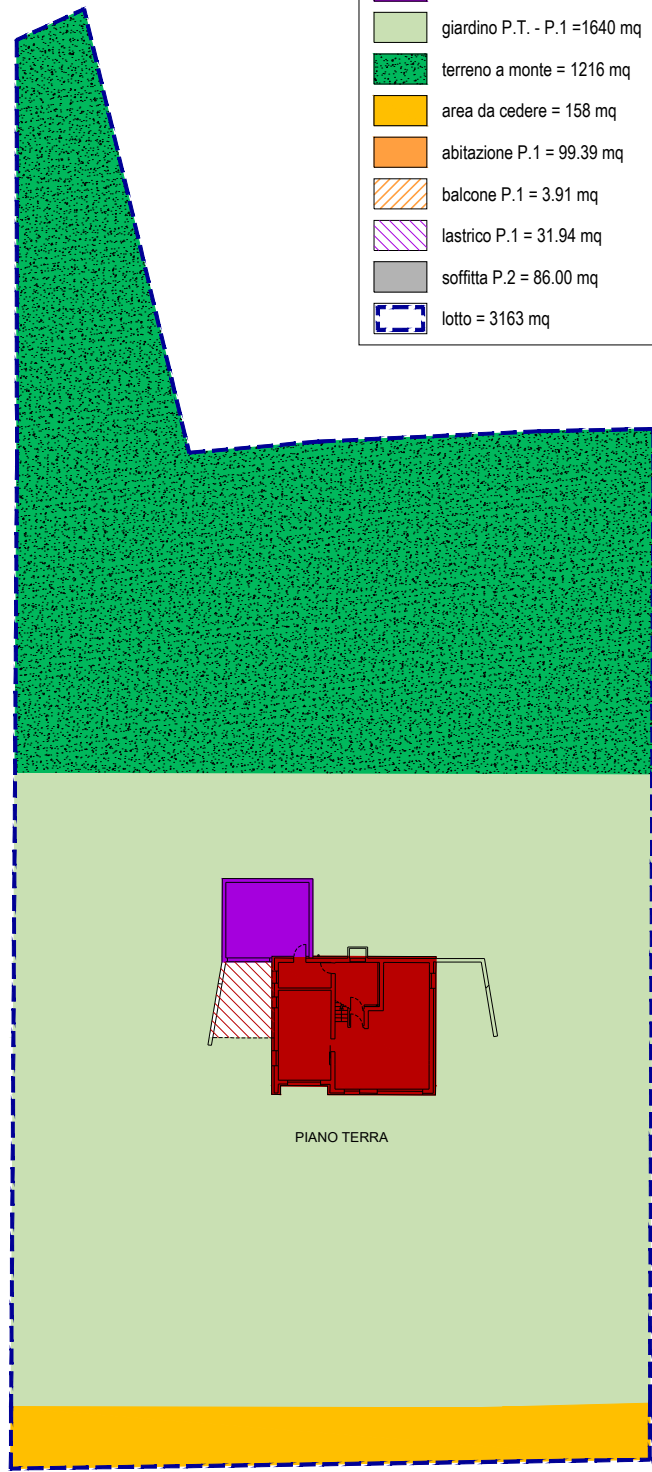
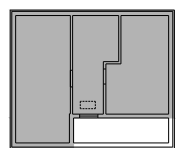


# CALCOLO SUPERFICI

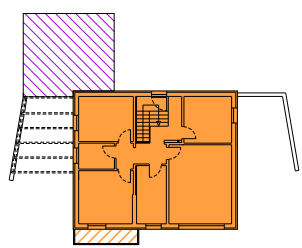
- abitazione P.T. = 97.37 mq
- pergolato P.T. = 19.74 mq
- autorimessa P.T. = 32.00 mq
- giardino P.T. - P.1 = 1640 mq
- terreno a monte = 1216 mq
- area da cedere = 158 mq
- abitazione P.1 = 99.39 mq
- balcone P.1 = 3.91 mq
- lastrico P.1 = 31.94 mq
- soffitta P.2 = 86.00 mq
- lotto = 3163 mq



PIANO TERRA



PIANO SECONDO



PIANO PRIMO