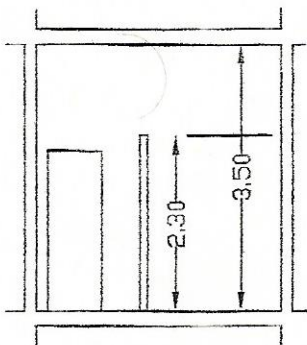


Via Val di Non, 100

vista frontale negozio

calcolo superficie vetrata apribile:
 $m (2.00 \times 0.55) + (2.20 \times 0.80) = m\text{q } 3.34$
 Sup. tot. negozio $m\text{q } 20.11 / 8 = m\text{q } 2.51$
 Sup. apribile $m\text{q } 3.34 > \frac{1}{8}$ Sup. negozio $m\text{q } 2.51$



Sezione A - A