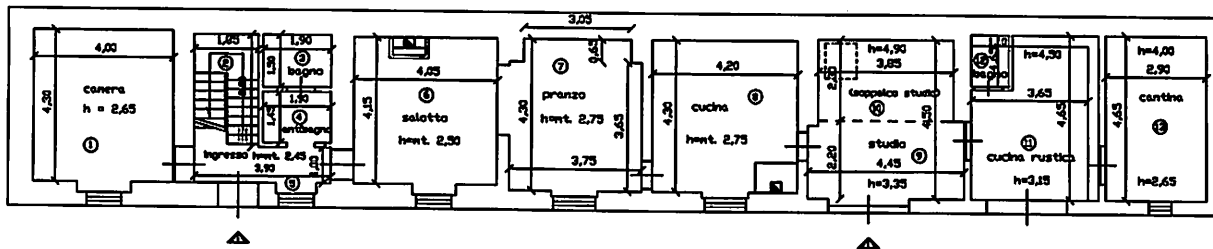


PIANO TERRA (abitazione) - SCALA 1/100 -



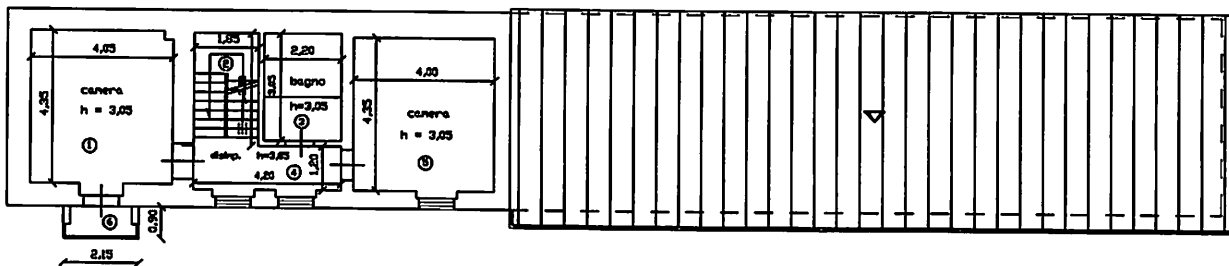
PIANO TERRA

- ① camera mq. 17,20
- ② scale mq. 3,92
- ③ bagno mq. 2,85
- ④ antibagno mq. 2,76
- ⑤ ingresso mq. 3,90
- ⑥ salotto mq. 16,81
- ⑦ pranzo mq. 13,67
- ⑧ cucina mq. 13,06
- ⑨ studio mq. 13,63
- ⑩ soppalco mq. 8,06
- TOTALE mq. 110,68

- ⑪ cucina mq. 13,27
- ⑫ bagno mq. 1,6
- ⑬ cantina mq. 13,49
- TOTALE mq. 30,46

TOTALE sup. piano terra (110,68 + 30,46) = mq. 141,14

PIANO PRIMO (abitazione) - SCALA 1/100 -

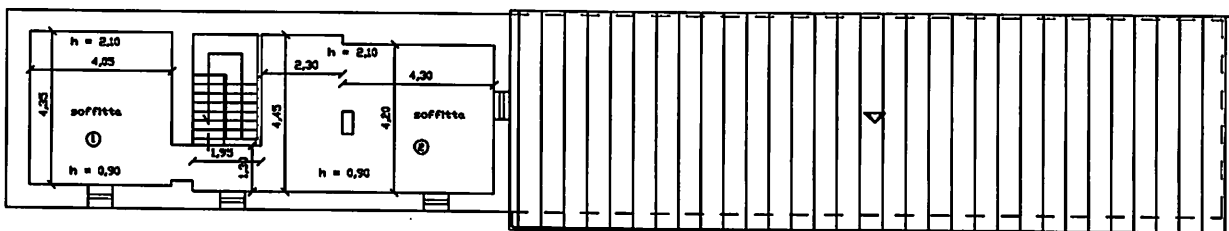


PIANO PRIMO

- ① camera mq. 17,62
- ② scale mq. 3,92
- ③ bagno mq. 6,71
- ④ disimpegno mq. 3,04
- ⑤ camera mq. 17,40
- TOTALE mq. 52,69
- ⑥ balcone mq. 1,94
- TOTALE mq. 1,94

TOTALE sup. piano primo (52,69 + 1,94) = mq. 54,63

PIANO SECONDO (abitazione) - SCALA 1/100 -

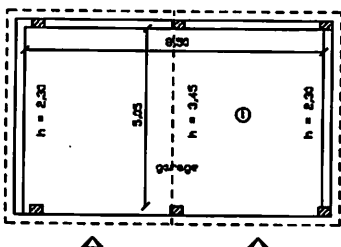


PIANO SOTTOTETTO

- ① soffitta mq. 17,62
- ② scale mq. 30,83

TOTALE sup. sottotetto (17,62 + 30,83) = mq. 48,45

PIANO TERRA (garage) - SCALA 1/100 -



PIANO TERRA -garage-

- ① garage mq. 42,93

TOTALE sup. garage = mq. 42,93