

Piano Particolareggiato del Centro Storico - Sottozona "A1" - C.I. "A 1.1"
(1:500)

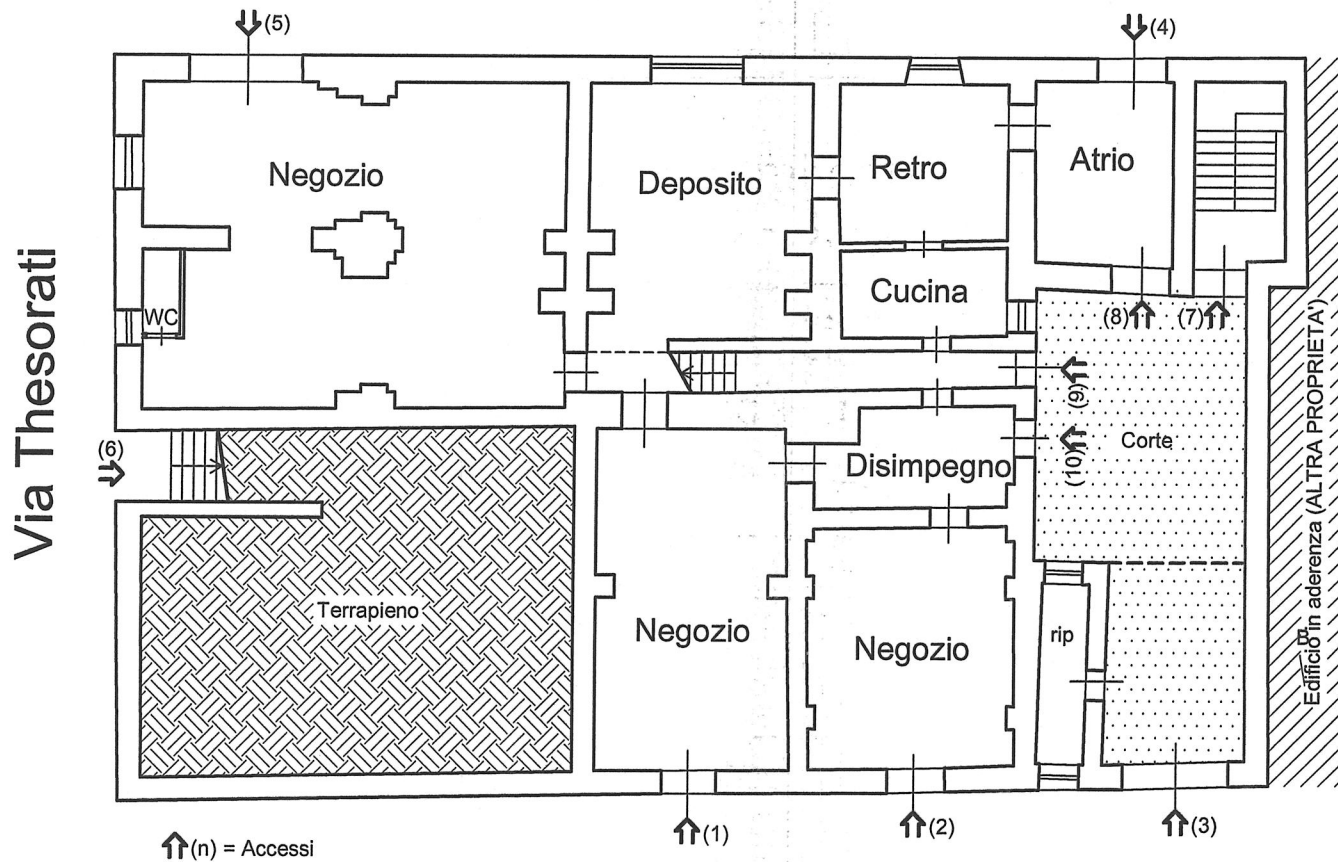




Planimetria Generale 1:500



Via Santo Spirito

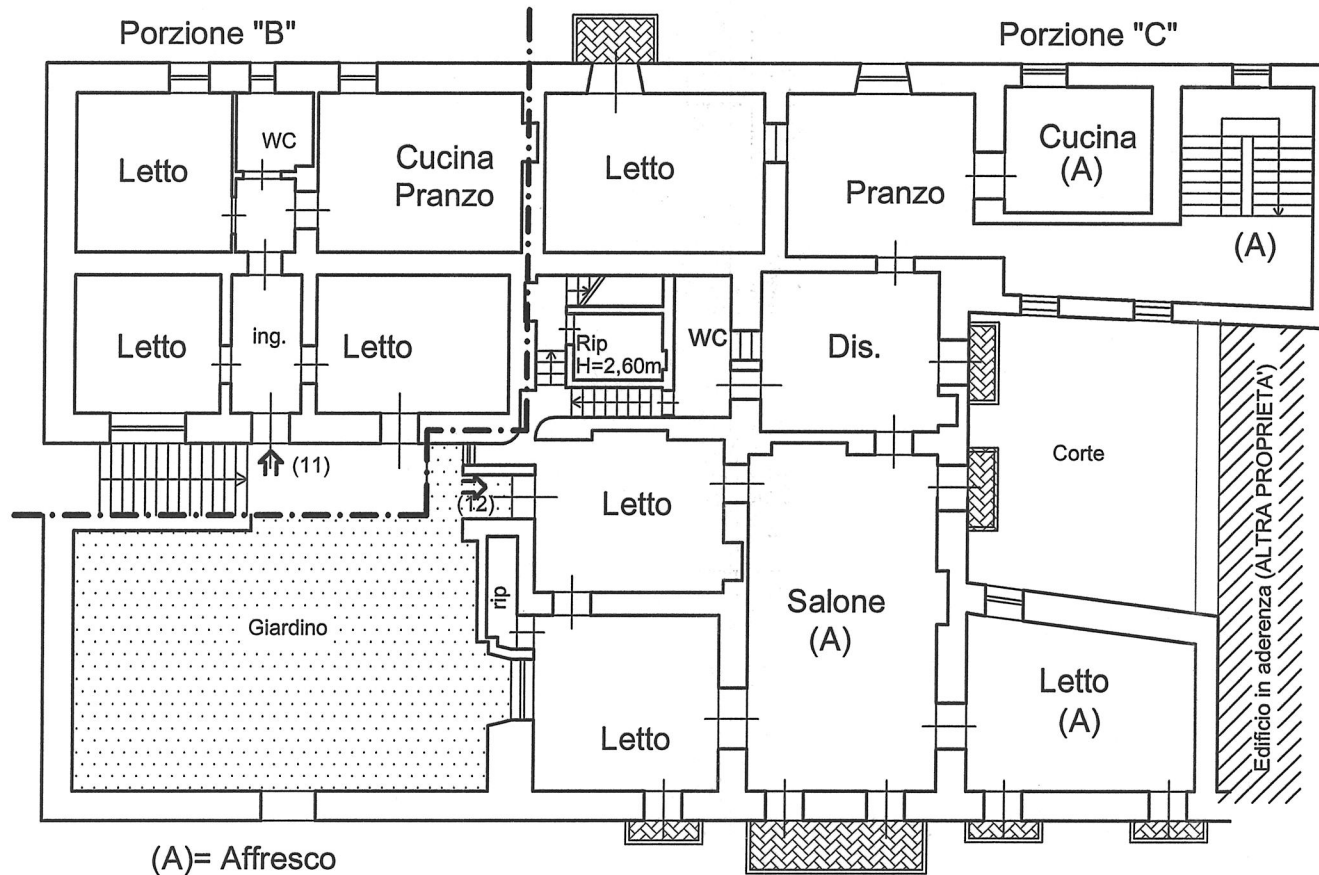


Corso Umberto
H= 2,80 - 3,20

PIANO TERRA
(Negozzi e fondaci) - Porzione (A)



Scala 1:200

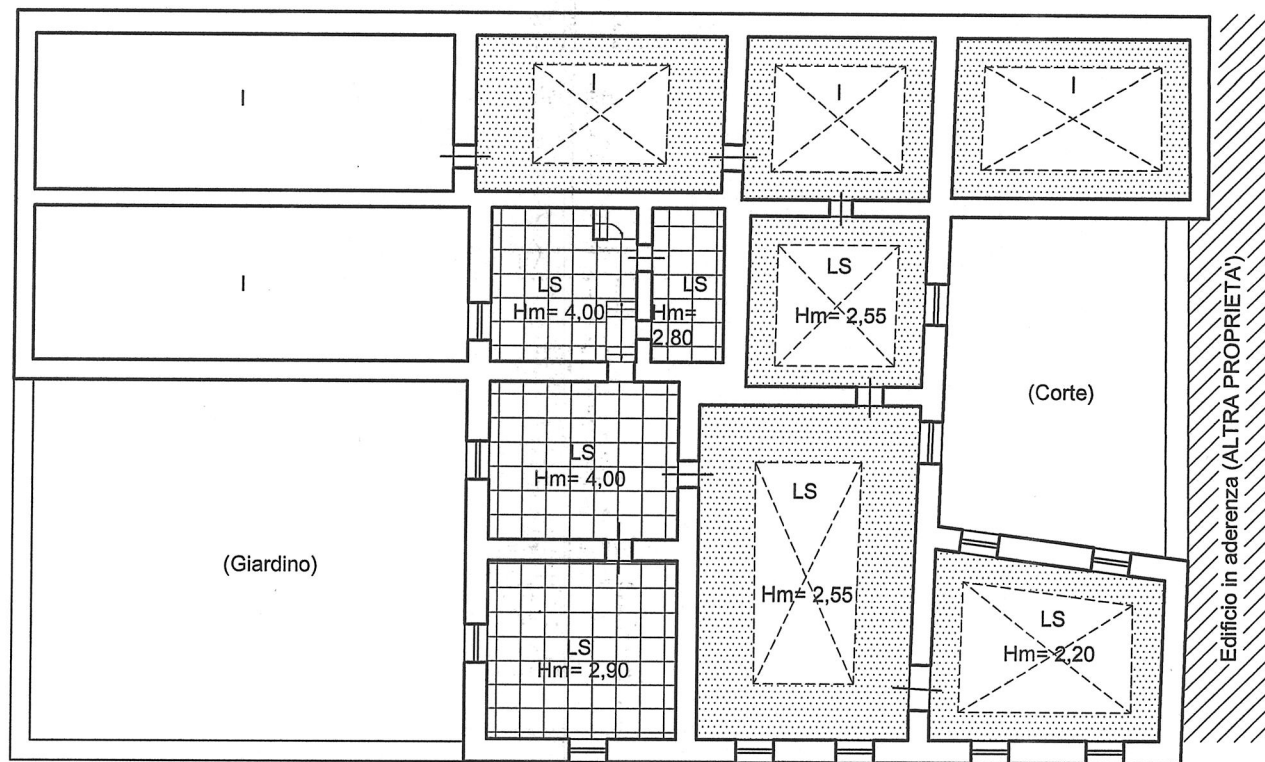


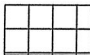


PIANO PRIMO

(Residenze)



Scala 1:200



-  Pavimentato (mattoni)
  Gretonato
-  Estradosso della volta

I= Intercapedine (NON accessibile)

LS= Locali-Soffitta

PIANO SOTTOTETTO

Porzione (D)



Scala 1:200