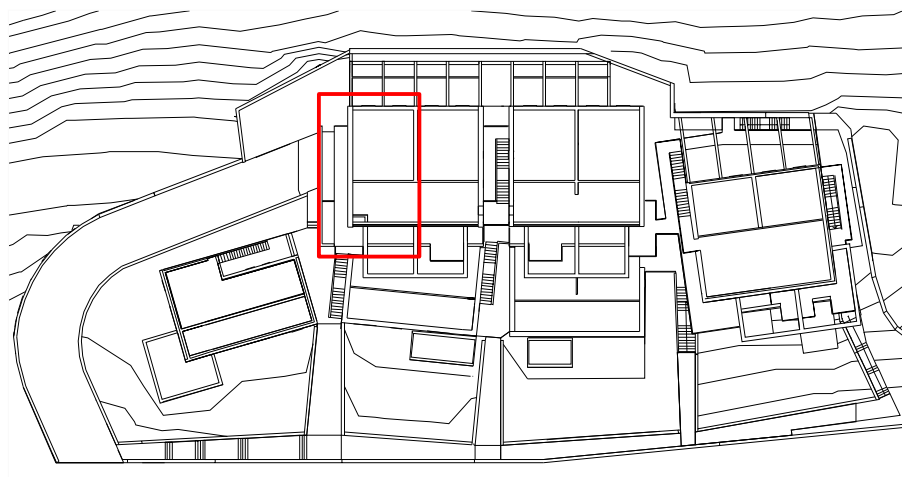




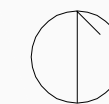
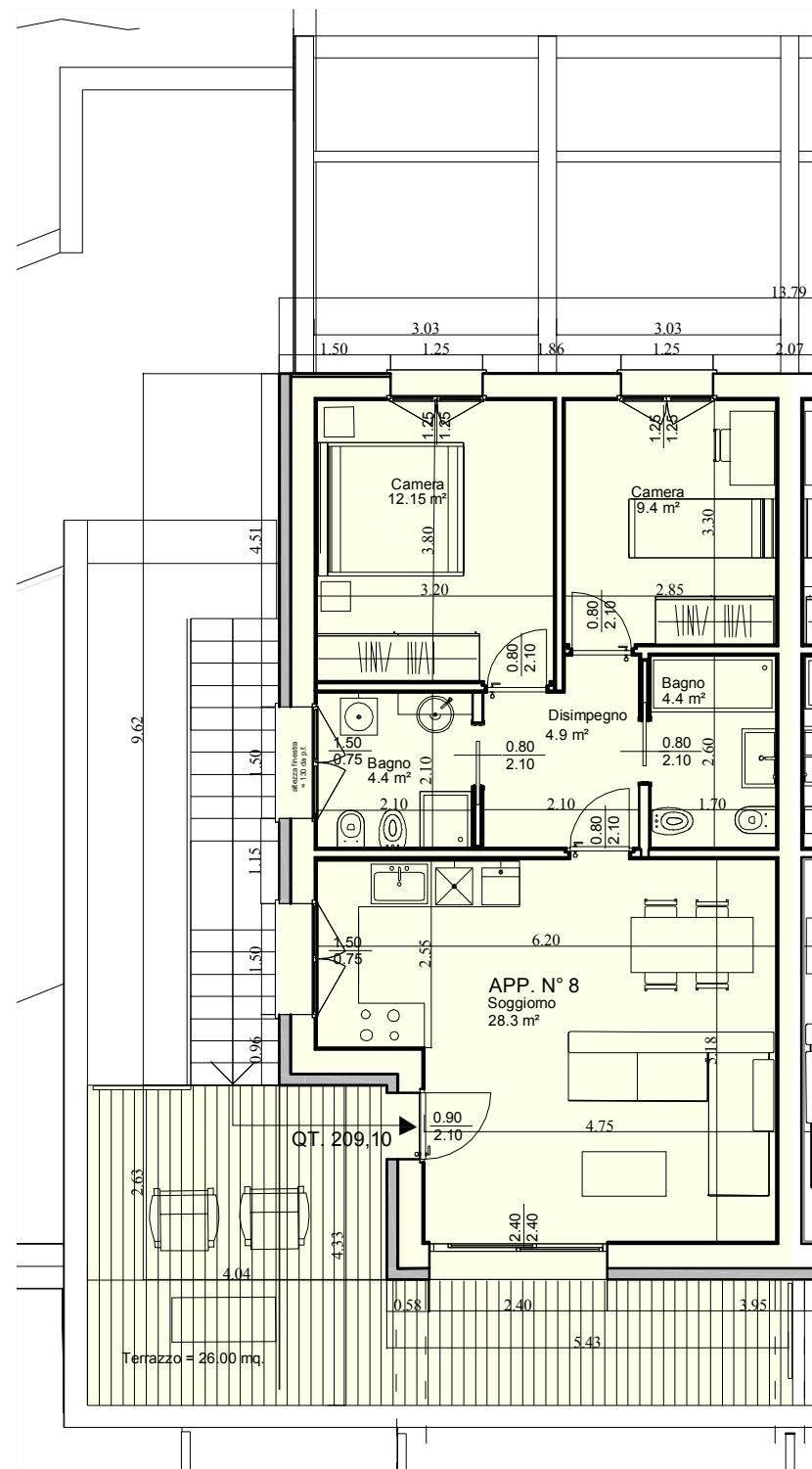
# Sarnico Lago d'Iseo

**LOTTO N°1\_APPARTAMENTO N°8\_piano primo**  
Qt. 209,10



**SUPERFICIE LORDA** = mq. 80,50 +  
**TERRAZZO FRONTE LAGO** = mq. 26,00 +

Terrazzi fronte lago e Solarium - ai fini commerciali calcolati a 1/2  
Terrazzi lato nord - ai fini commerciali calcolati a 1/3  
Giardino - ai fini commerciali calcolati a 1/10



Pianta  
scala 1:100