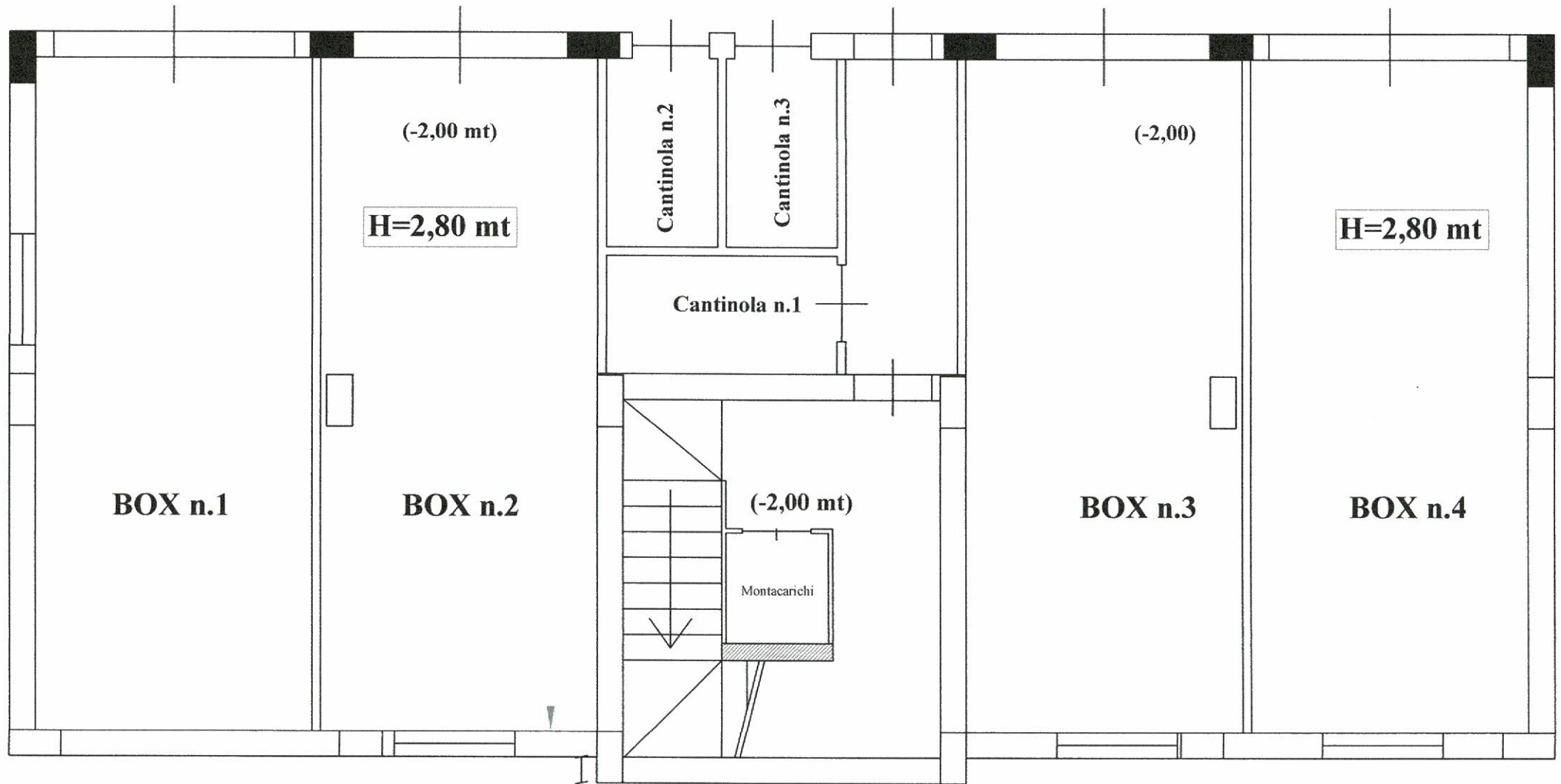


SISTEMAZIONE AREE ESTERNE

PIANTA PIANO SEMINTERRATO



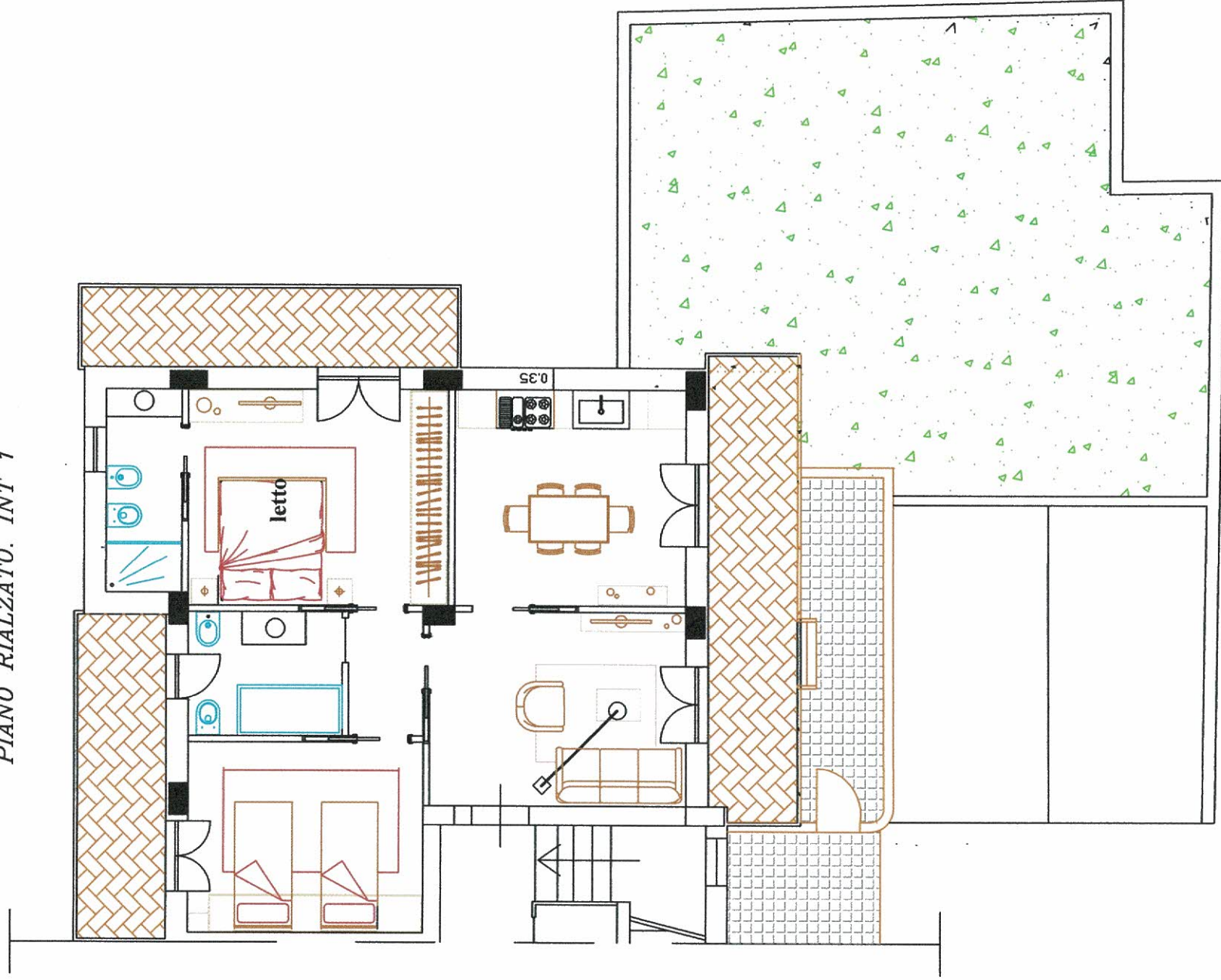
Box. 1 Mq 28.00
Box. 2 Mq 28.00
Box. 3 Mq 28.00
Box. 4 Mq 28.00

Cantinola 1 Mq 5.00
Cantinola 2 Mq 4.00
Cantinola 3 Mq 4.00

PIANO RIALZATO



PIANO RIALZATO. INT 1



Sup netta interna Mq 64.00

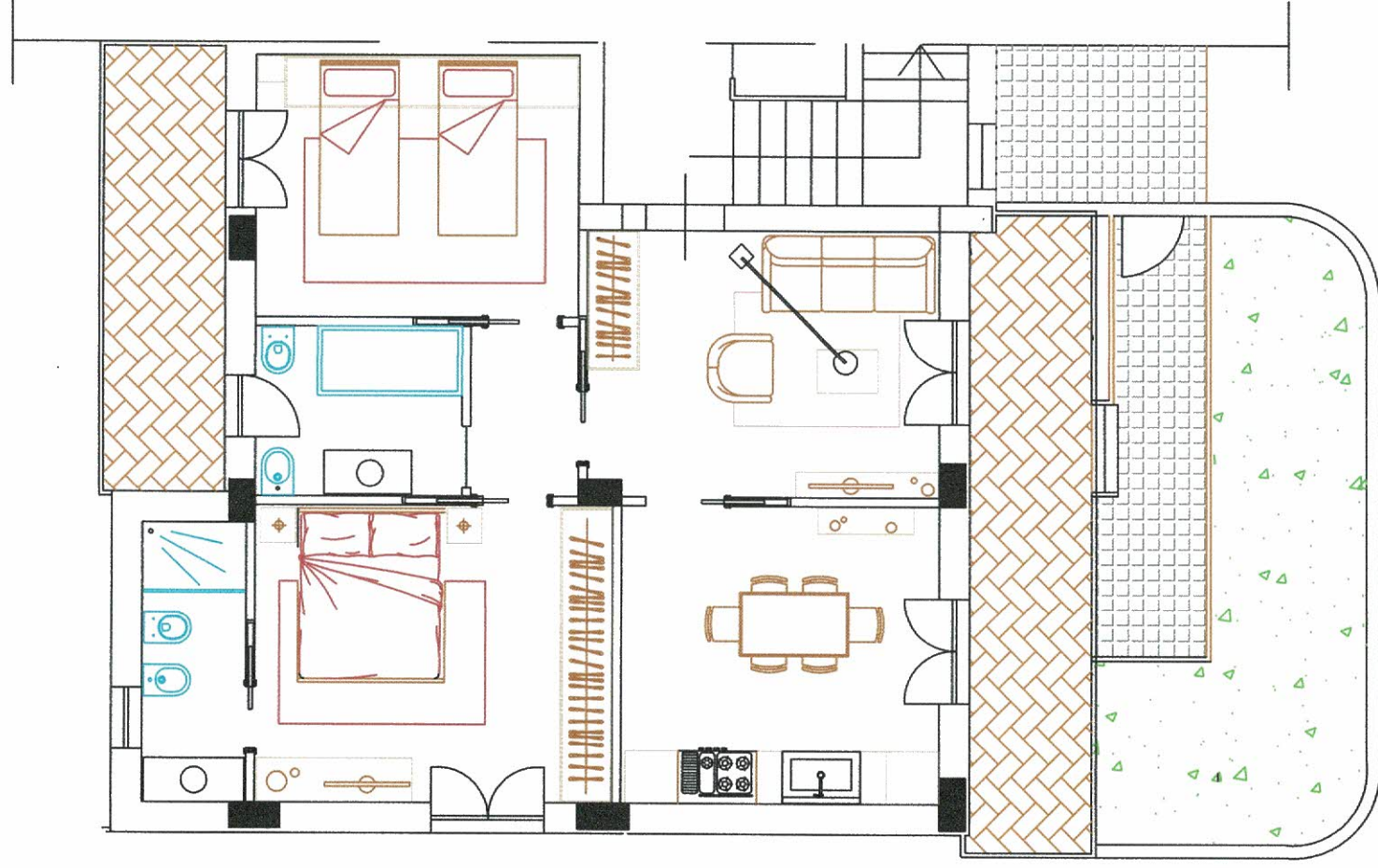
Sup. Res. Lorda Mq 76.50

Balconi Mq 24.50 x 0.40 = Mq 9.80

Terrazzo/Giardino Mq 73.50 x 0.25 = Mq 18.40

Superficie raggiagliata Mq 104.70

PIANO RIALZATO. INT 2



Sup netta interna Mq 64.00

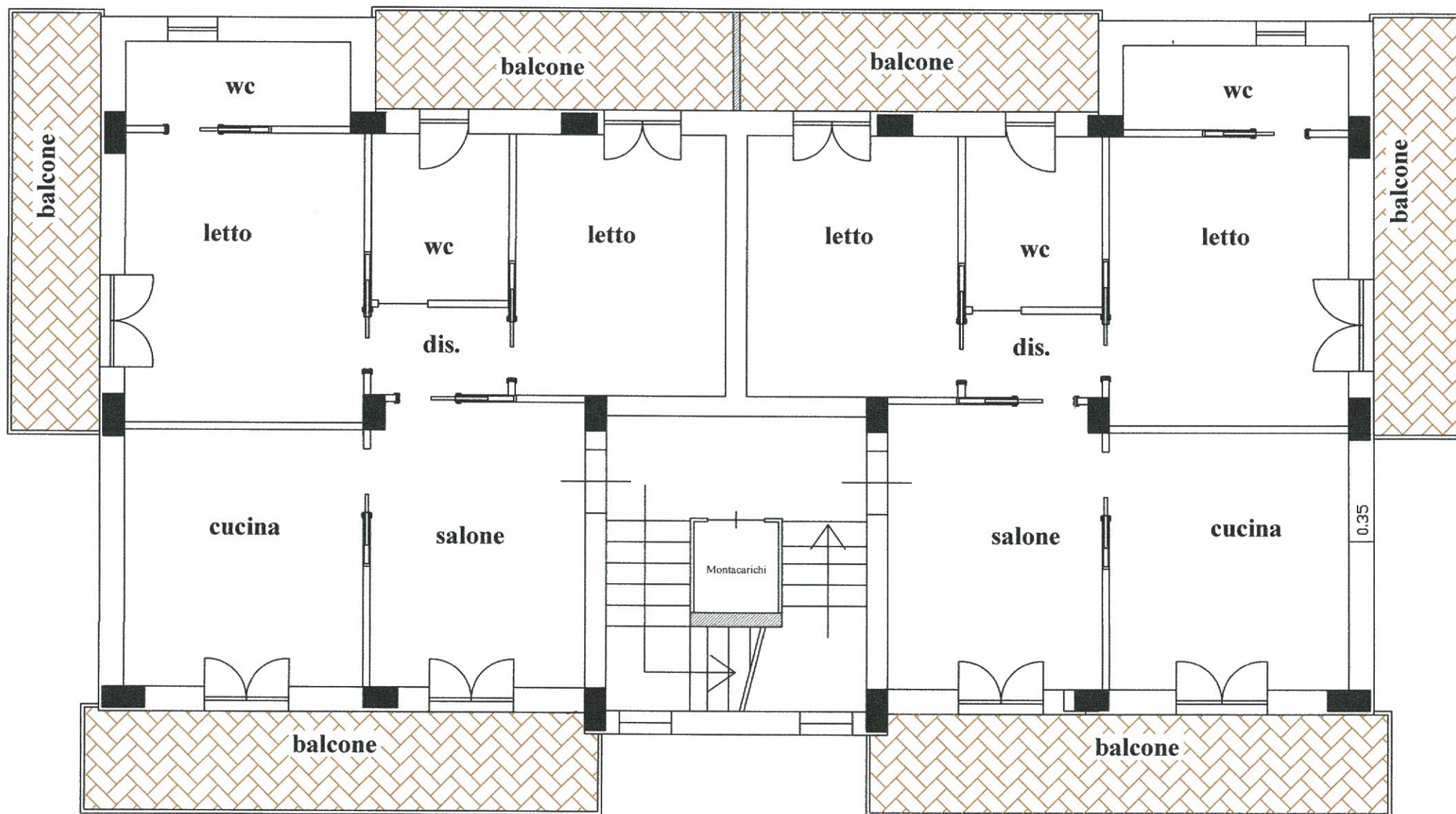
Sup. Res. Lorda Mq 76.50

Balconi Mq 16.60 x 0.40 = Mq 6.65

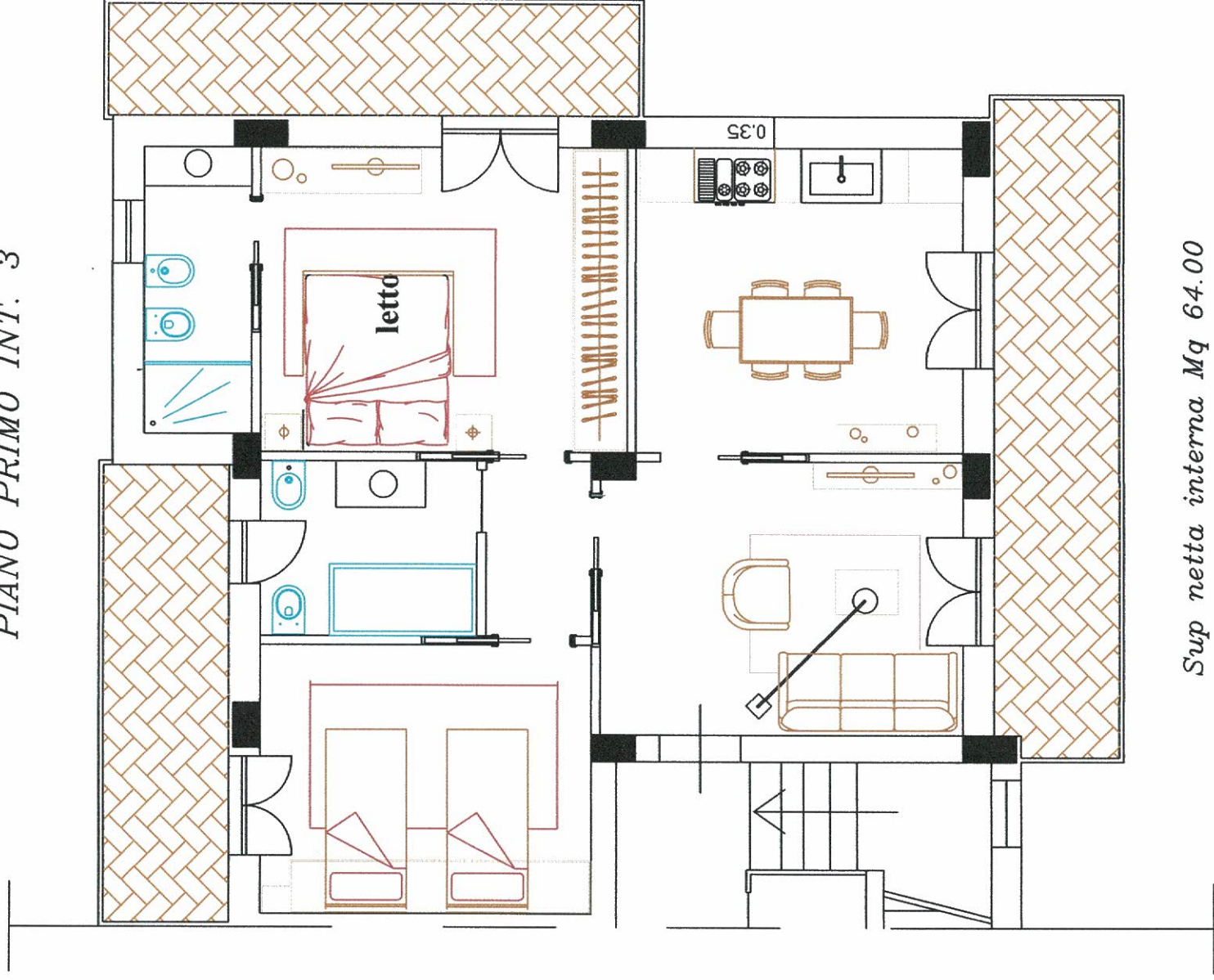
Terrazzo/Giardino Mq 23.70 x 0.25 = Mq 5.95

Superficie raggiunta Mq 89.10

PIANO PRIMO e SECONDO



PIANO PRIMO INT. 3



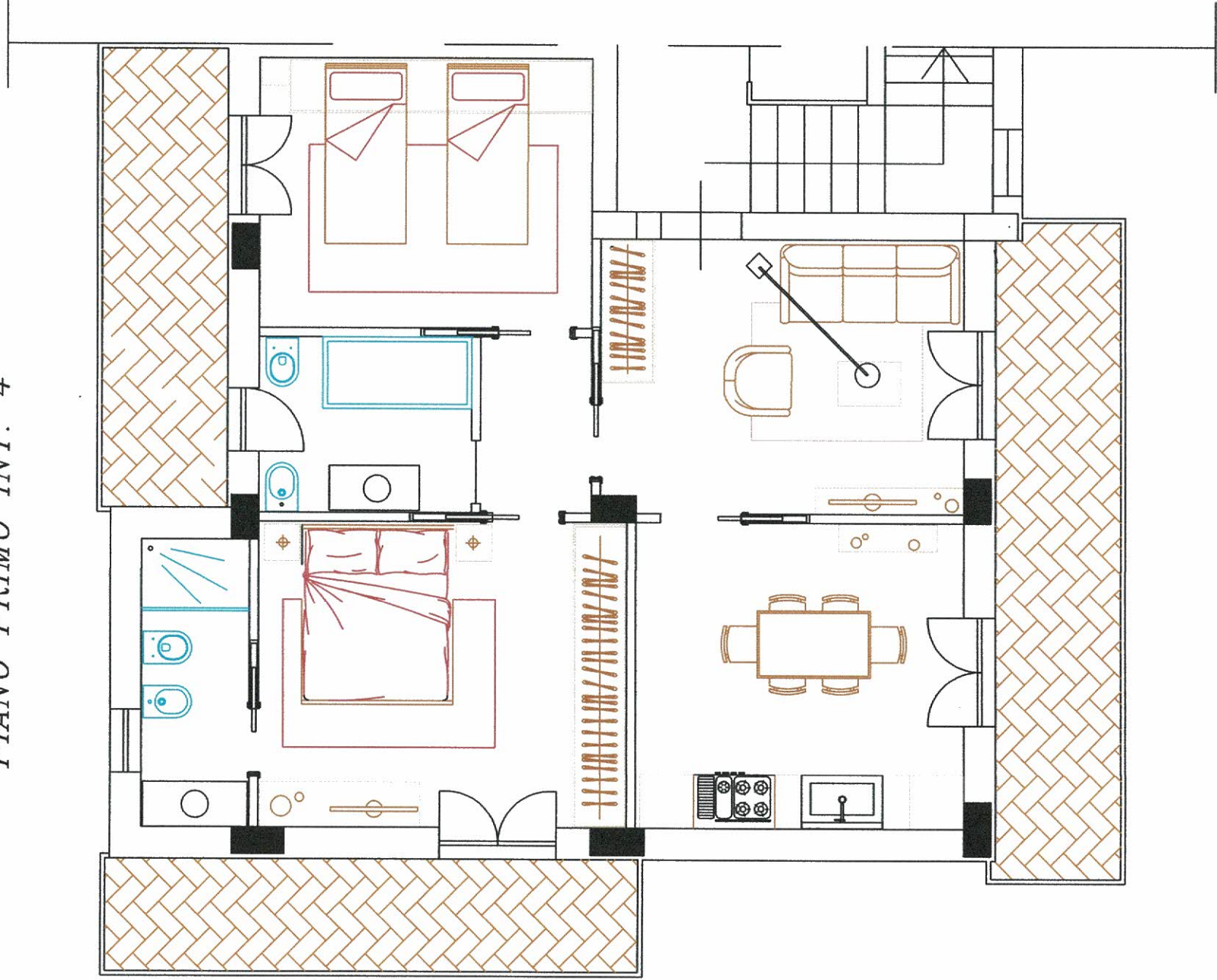
Sup netta interna Mq 64.00

Sup. Res. Lorda Mq 76.50

Balconi Mq 24.50 x 0.40 = Mq 9.80

Superficie raggiunta Mq 86.30

PIANO PRIMO INT. 4



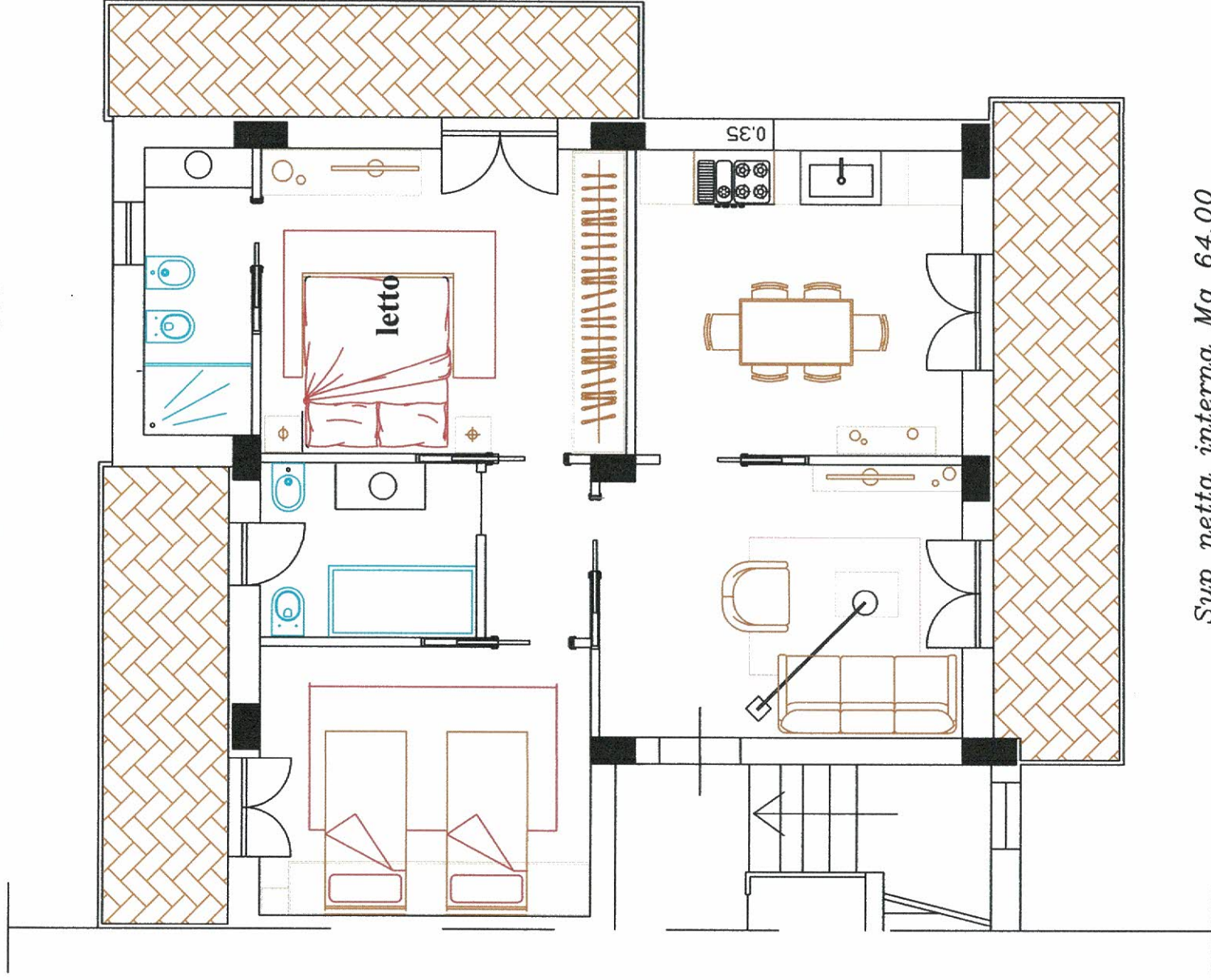
Sup netta interna Mq 64.00

Sup. Res. Lorda Mq 76.50

Balconi Mq 24.50 x 0.40 = Mq 9.80

Superficie raggiunta Mq 86.30

PIANO SECONDO INT.5



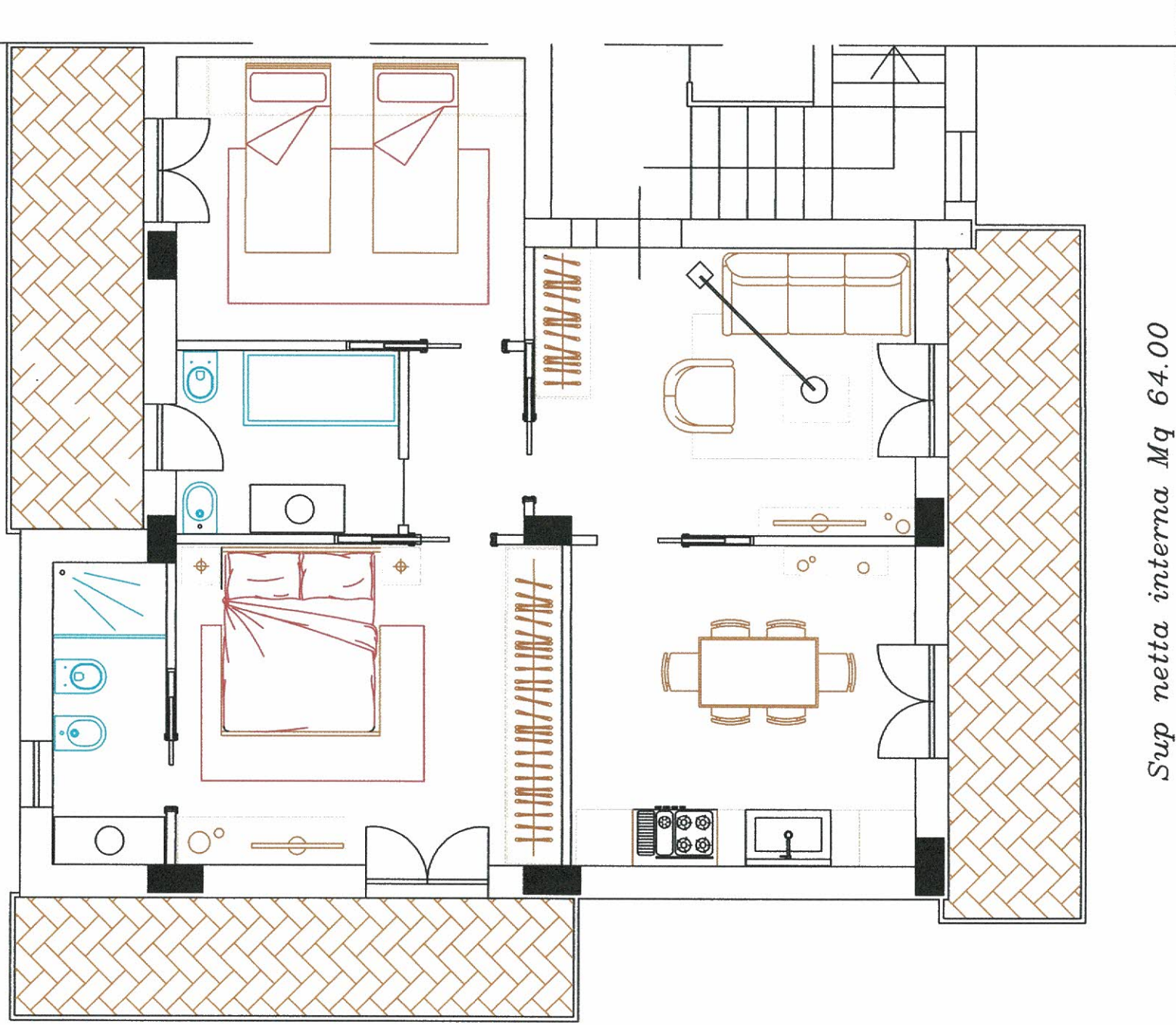
Sup netta interna Mq 64.00

Sup. Res. Lorda Mq 76.50

Balconi Mq 24.50 x 0.40 = Mq 9.80

Superficie raggiunta Mq 86.30

PIANO SECONDO INT. 6

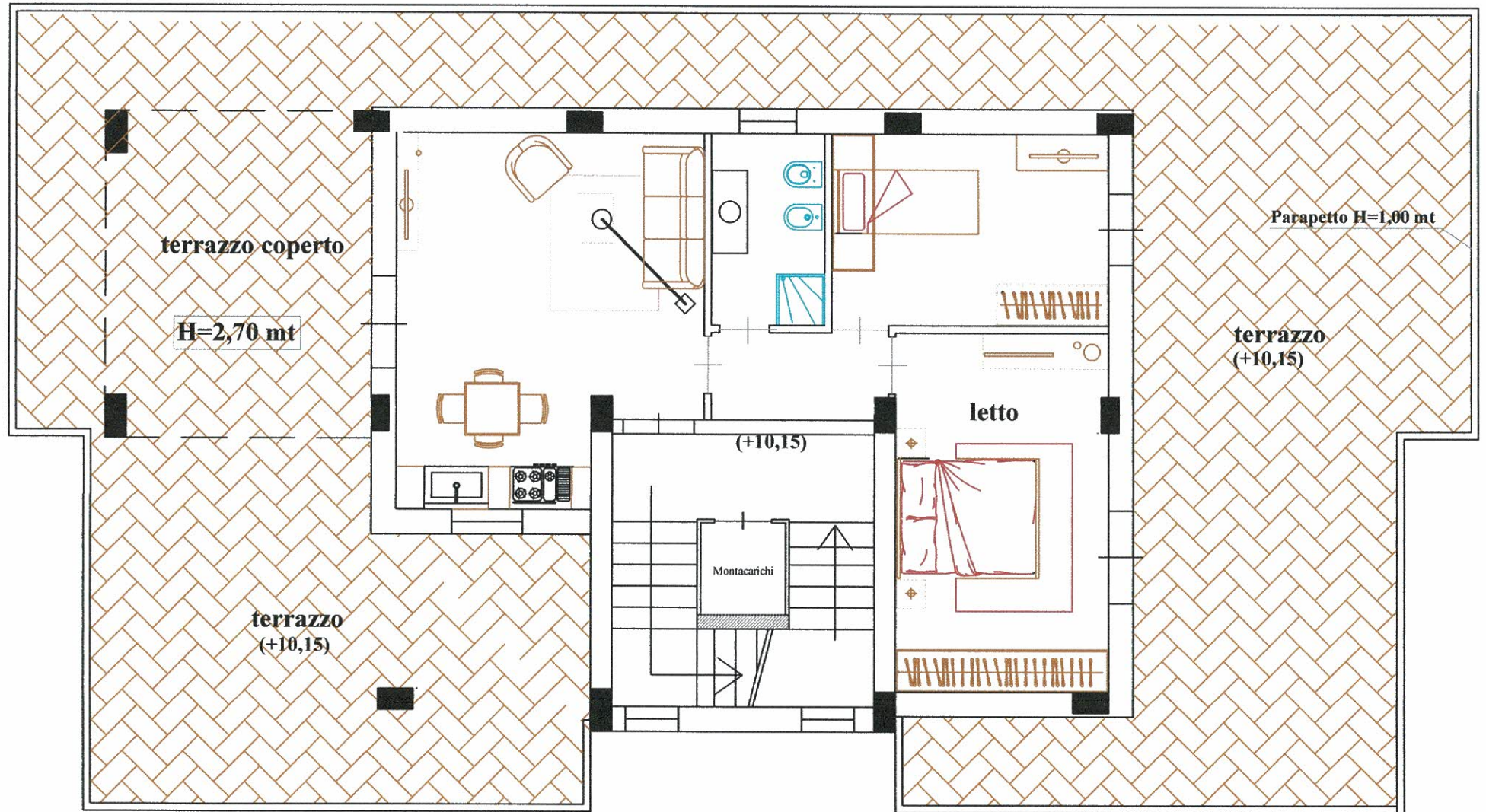


Sup netta interna Mq 64.00

Sup. Res. Lorda Mq 76.50

Balconi Mq 24.50 x 0.40 = Mq 9.80

Superficie raggiunta Mq 86.30



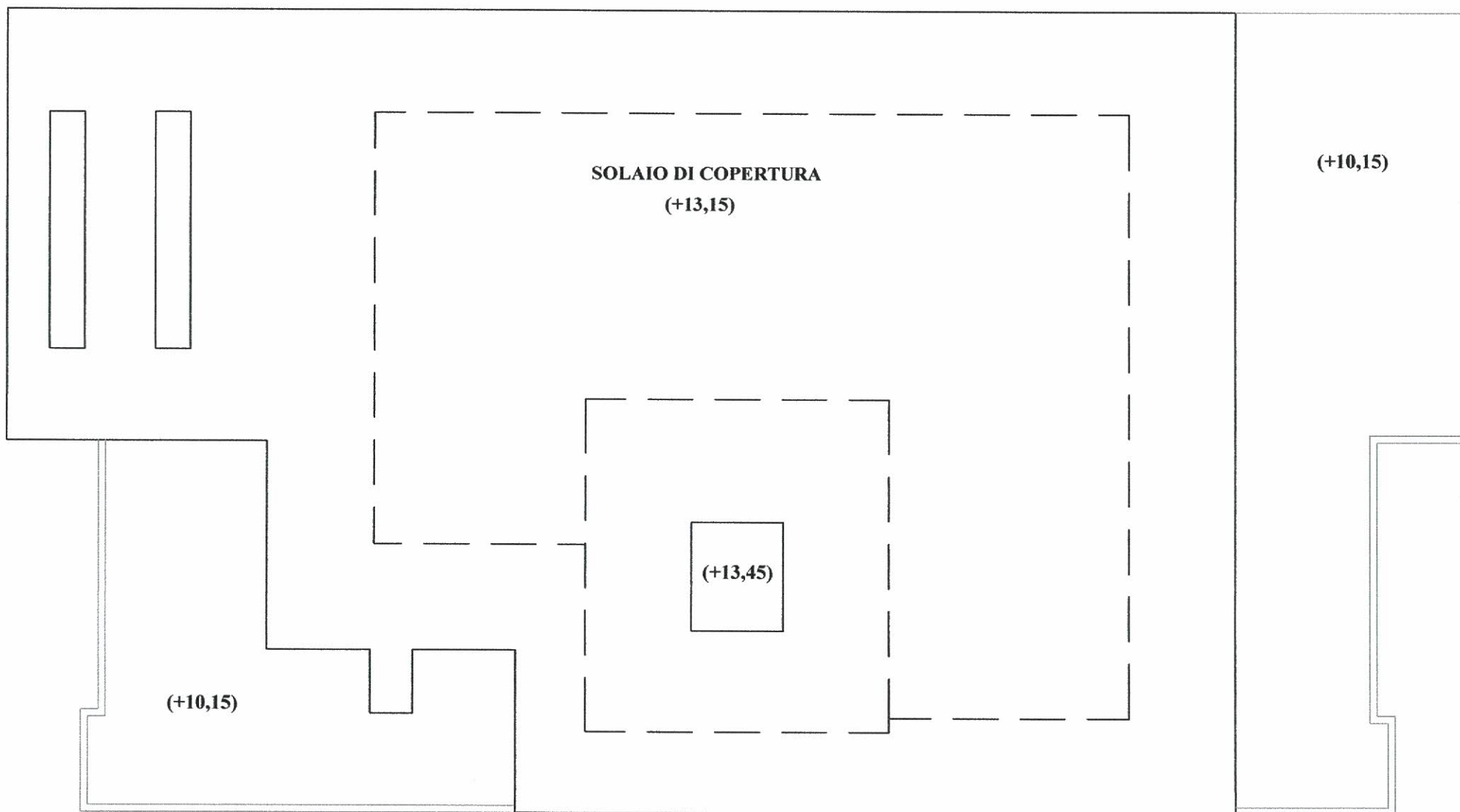
PIANTA PIANO TERZO Int.7

Sup netta interna Mq 56.00

Sup. Res. Lorda Mq 66.00

Terrazzo Mq 125.00 x 0.30 = Mq 38.00

Superficie ragguagliata Mq 104.00

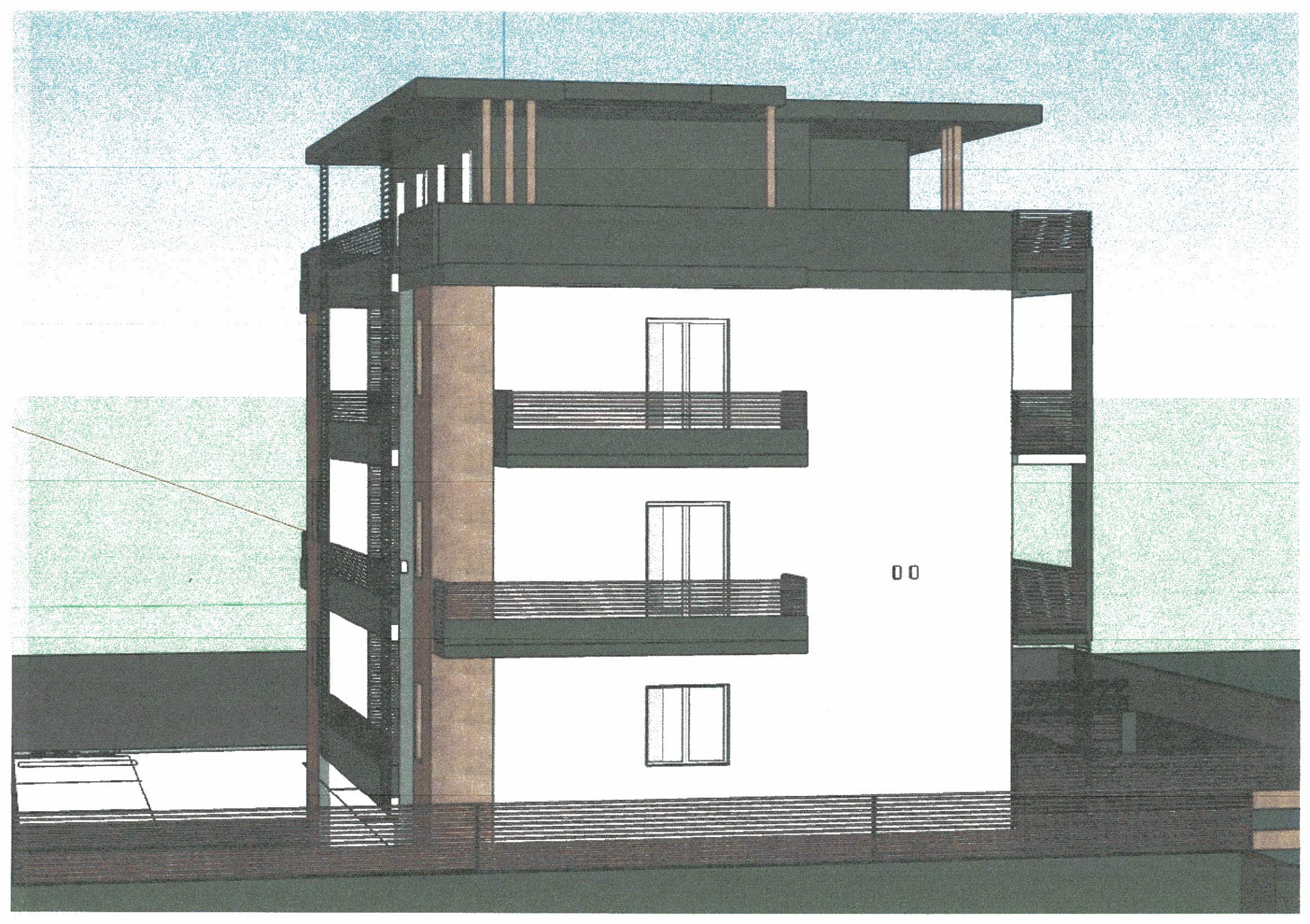


PIANTA PIANO COPERTURA









00



Mariglianella (NA) Via Falcone Borsolino - Lotto 6 -

Piano	Interno	Appartamento
--------------	----------------	---------------------

Rialzato	1	€ 153.000,00	
Rialzato	2	€ 142.000,00	
Primo	3	€ 138.000,00	
Primo	4	€ 138.000,00	
Secondo	5	€ 138.000,00	
Secondo	6	€ 138.000,00	
Terzo	7	€ 150.000,00	
Box 1		€ 20.000,00	
Box 2		€ 20.000,00	
Box 3		€ 20.000,00	
Box 4		€ 20.000,00	
Cantinola 1		€ 5.000,00	
Cantinola 2		€ 5.000,00	
Cantinola 3		€ 5.000,00	