

-COMUNE DI PORTO RECANATI-

Lottizzazione Ex-Bartoloni Località Montarice



TIPOLOGIA VILLA BIFAMILIARE

-LOTTO 39-

SUPERFICIE LOTTO A 698,63 mq

ZONA GIORNO A 83,65 mq

ZONA NOTTE A 57,56 mq

INTERRATO A 126,97 mq

TERRAZZI E PORTICATI A 59,83 mq

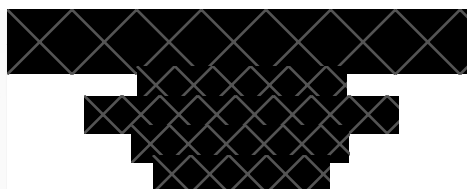
SUPERFICIE LOTTO B 561,60 mq

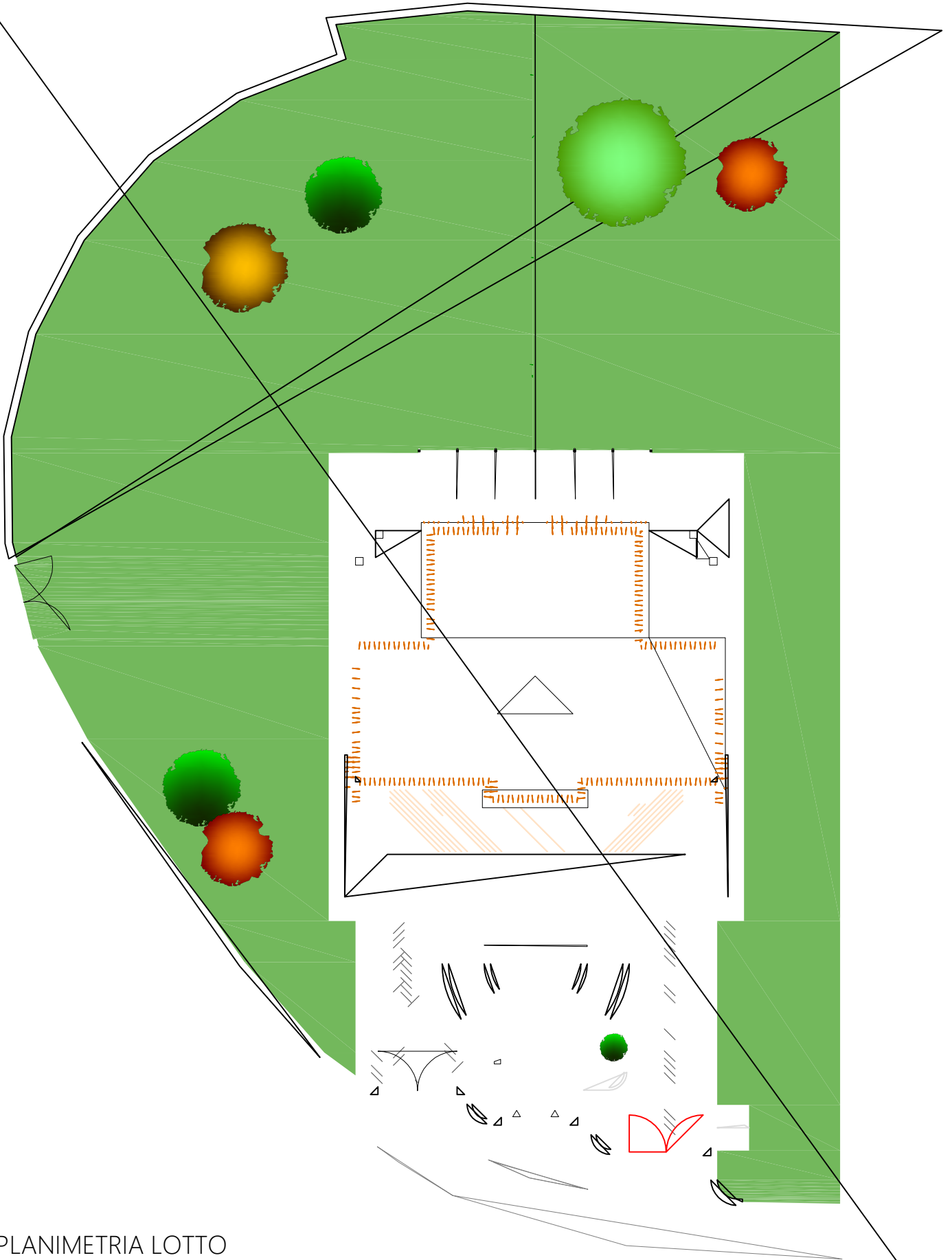
ZONA GIORNO B 84,83 mq

ZONA NOTTE B 58,10 mq

INTERRATO B 128,96 mq

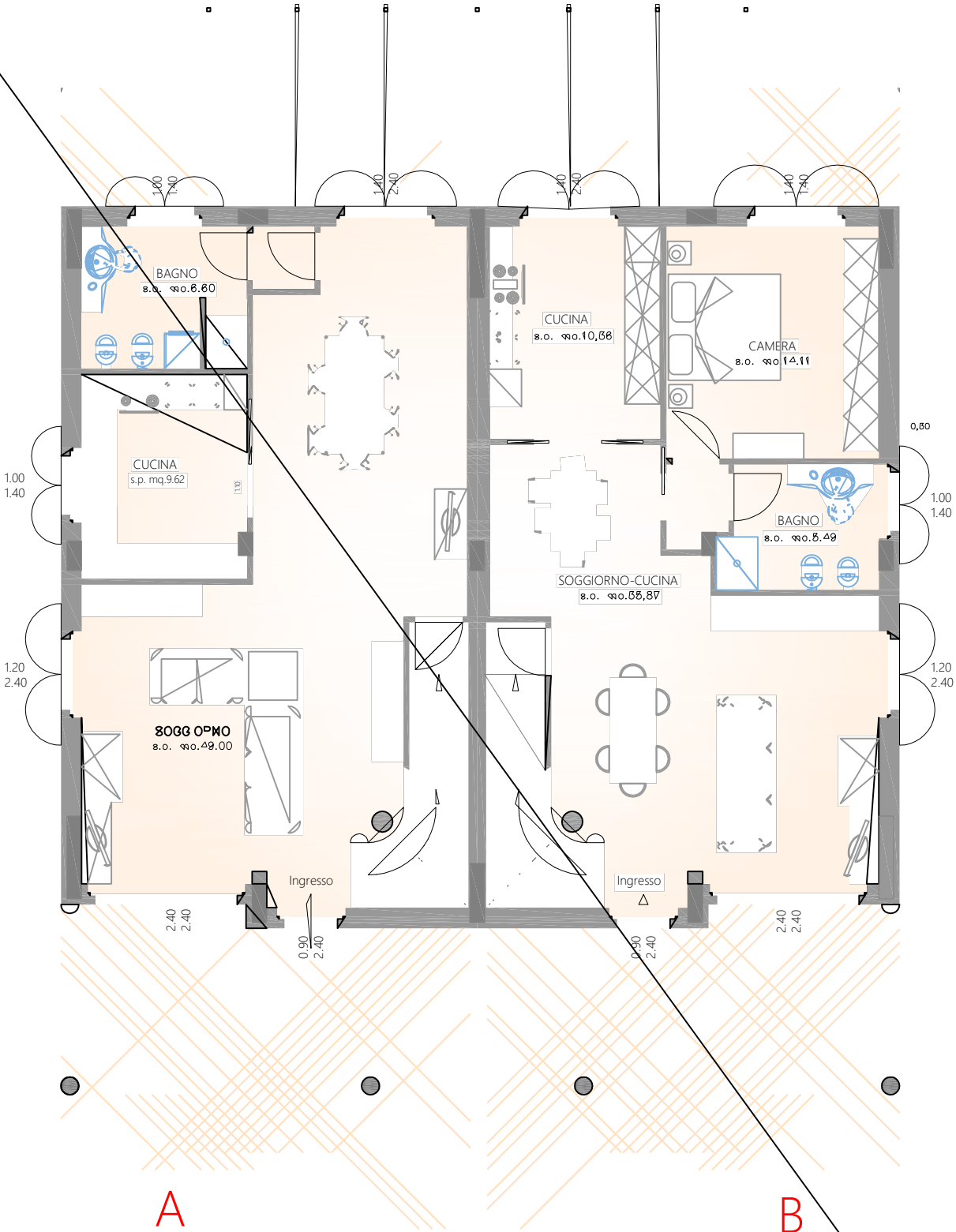
TERRAZZI E PORTICATI B 60,56 mq





PLANIMETRIA LOTTO





A

B

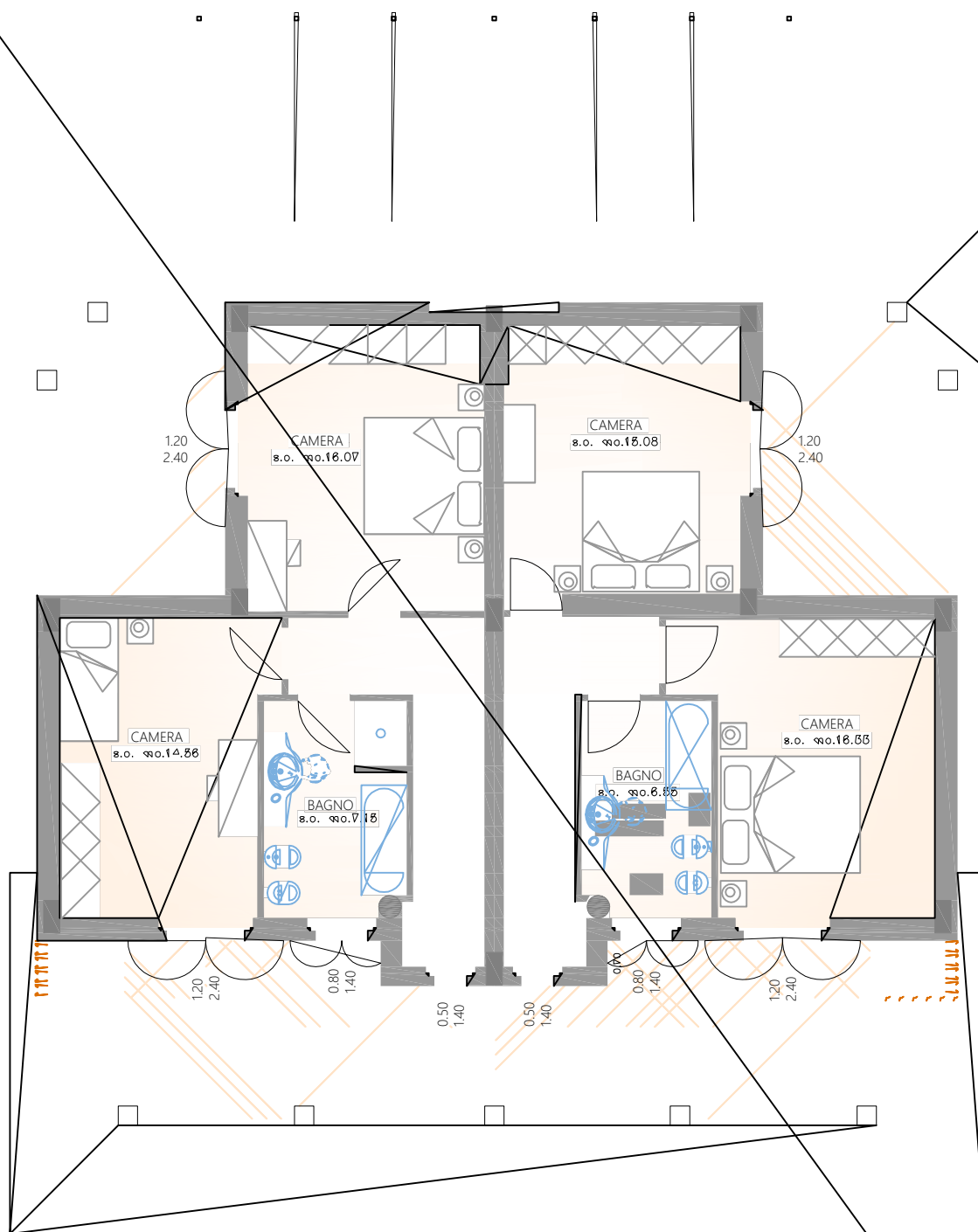
S.L. mq.83.65

S.L. mq.84.83

p=20,00%

PIANTA PIANO TERRA



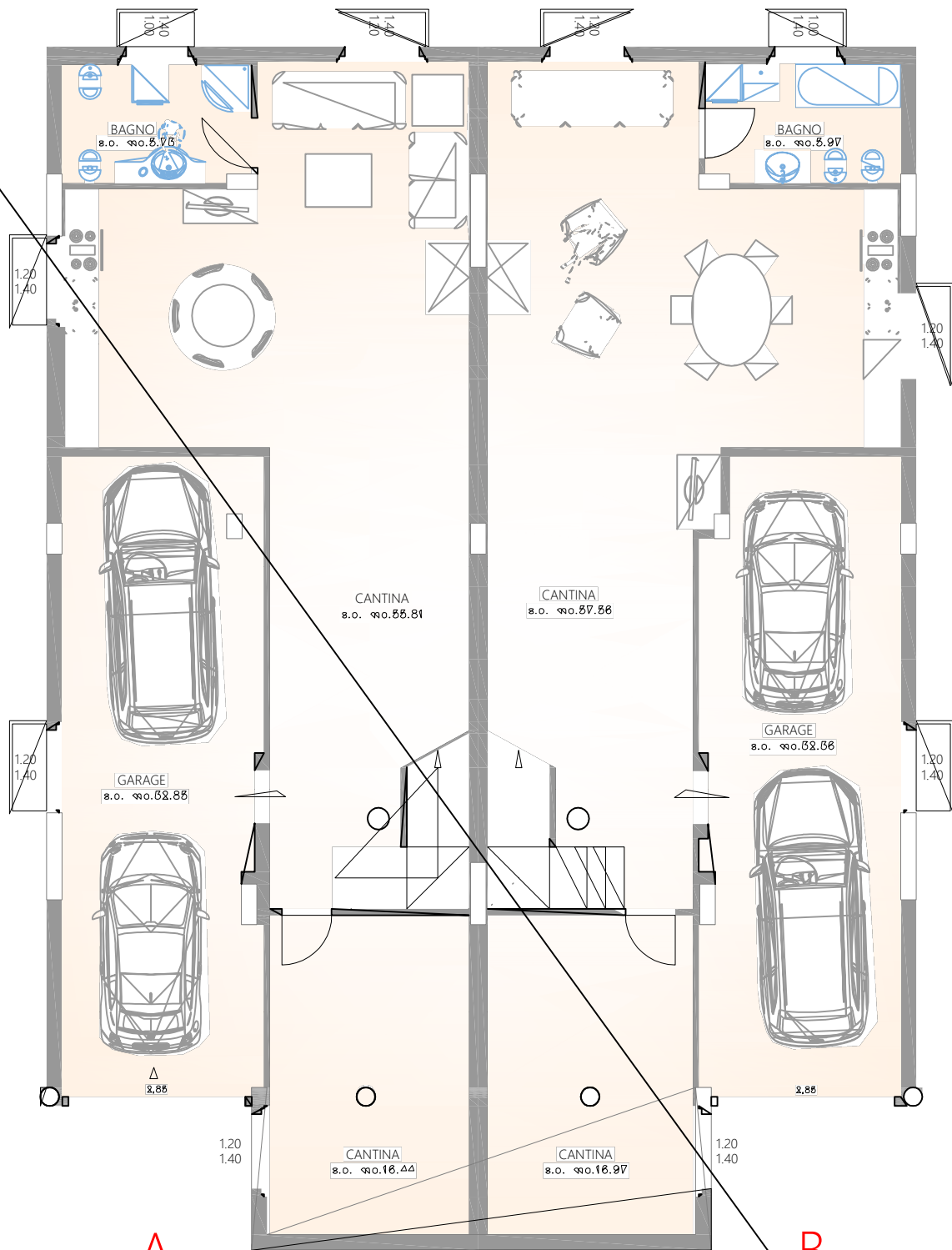


A
S.L. mq.57.56

B
S.L. mq.58.10

PIANTA PIANO PRIMO





A
S.L. mq.126.97

B
S.L. mq.128.96

p=20,00%

p=11,90%

PIANTA PIANO INTERRATO

