

Firmato Da: FALCONE BARBARA Emesso Da: ARUBAPEC S.P.A. NG CA 3 Serial#: 41ea53944a381c987d3b28acce99491a



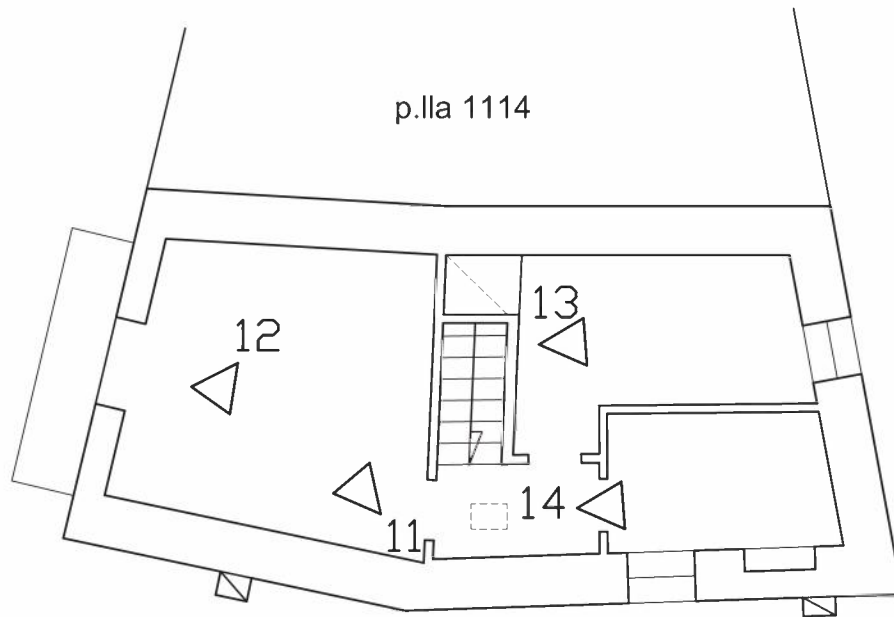
roto 1,2, 3, 4



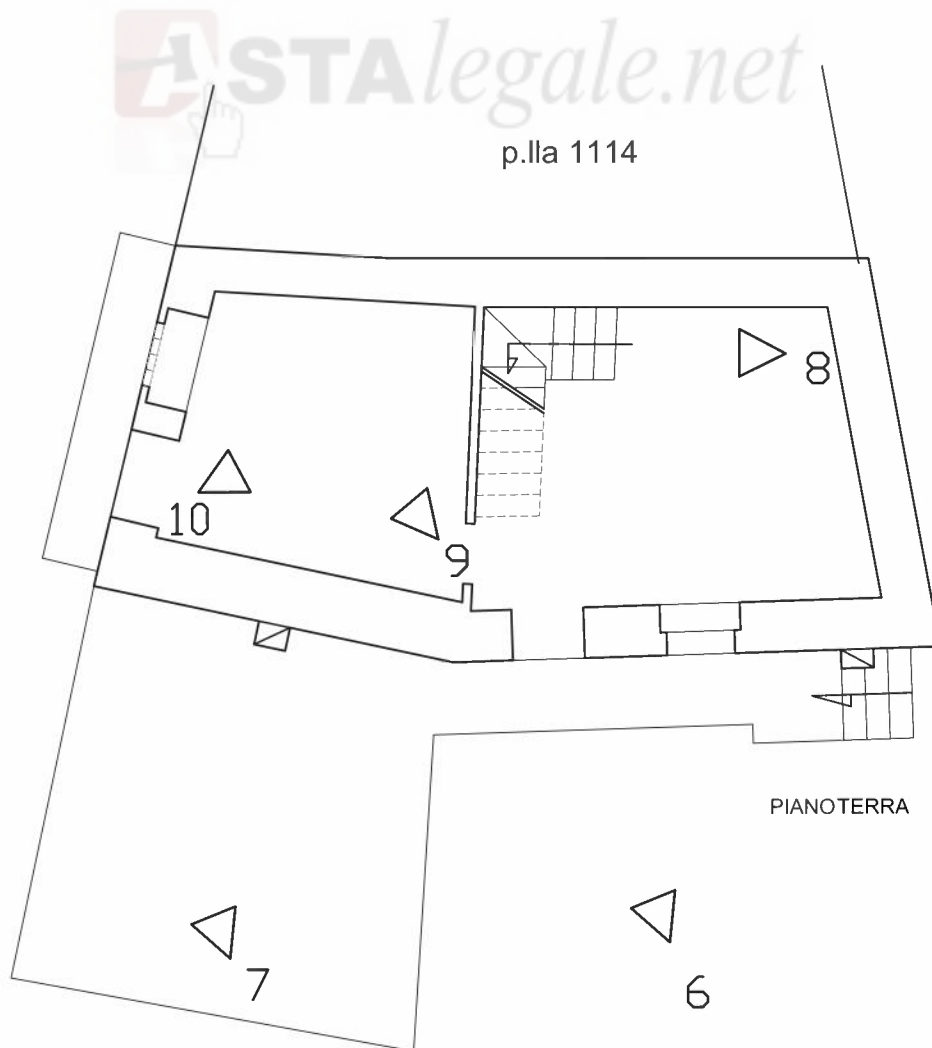


foto 5

 **ASTA**legale.net



PIANO PRIMO



PIANOTERRA

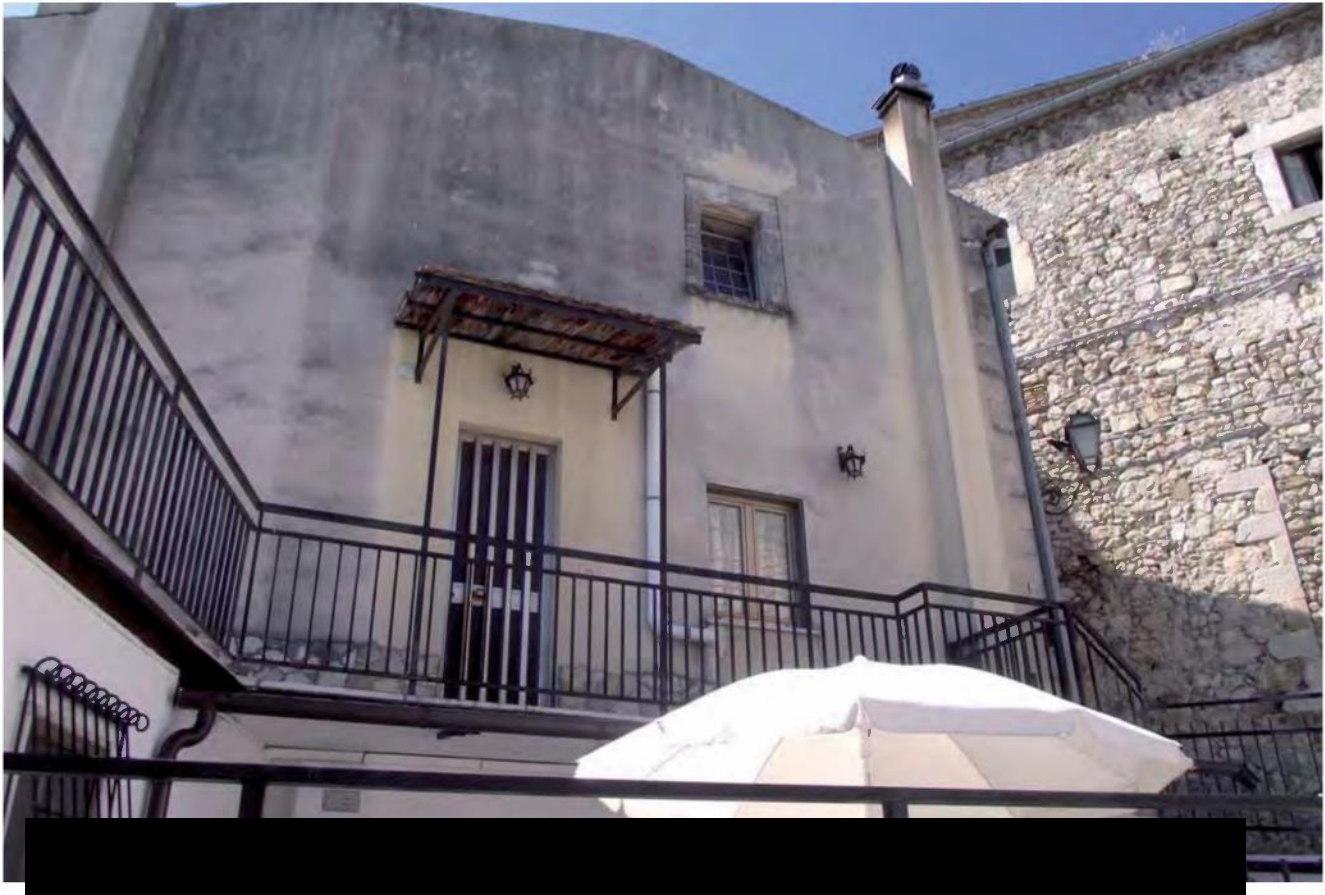


foto 6 e 7



Firmato Da: FALCONE BARBARA Emesso Da: ARUBAPEC S.P.A. NG CA 3 Serial#: 41ea53944a381c987d3b28acce99491a

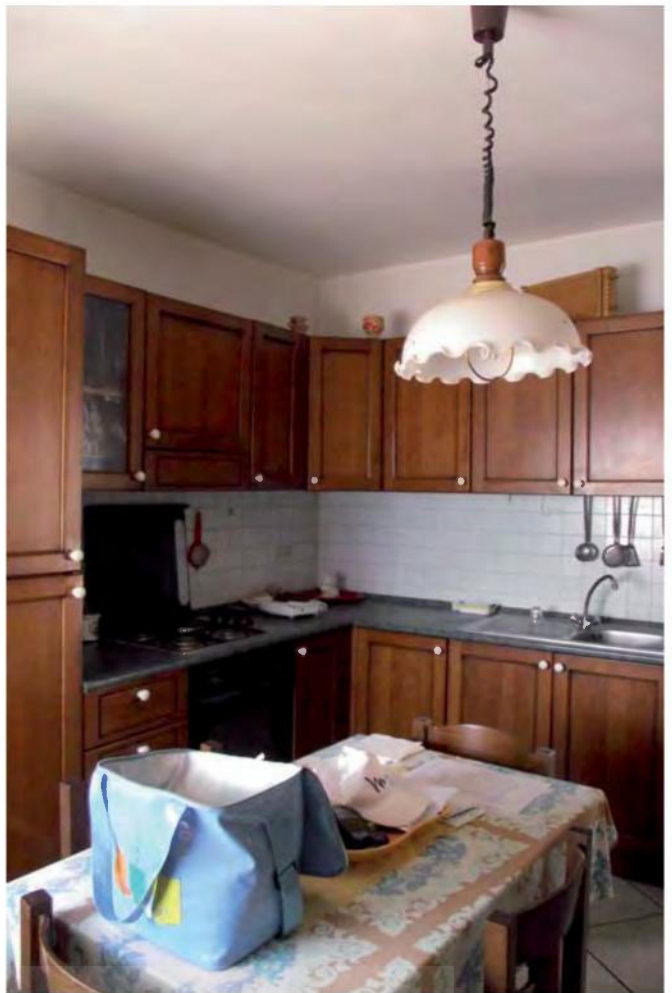
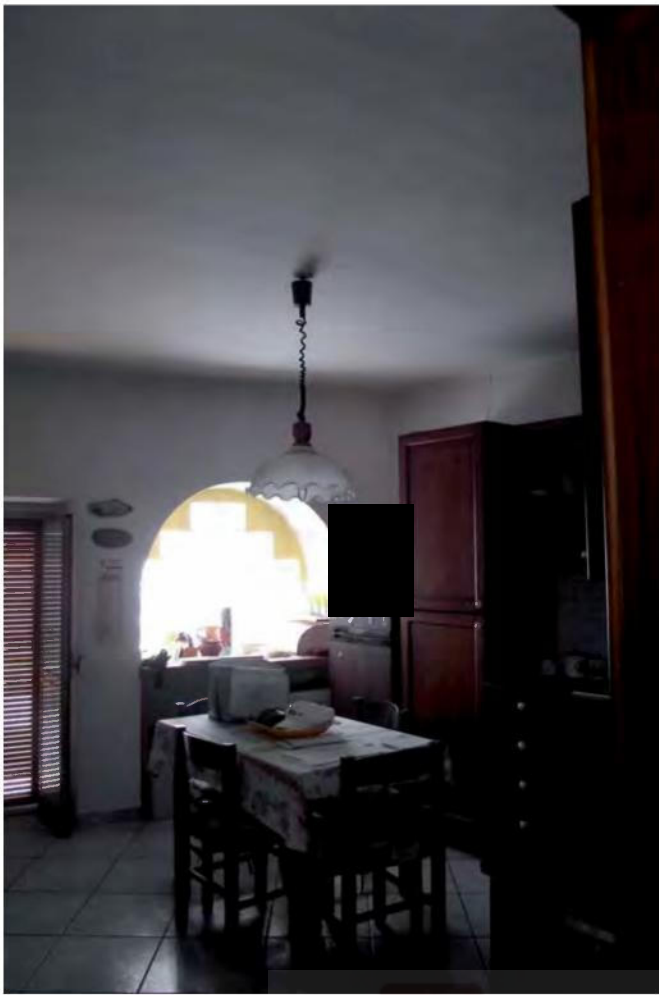


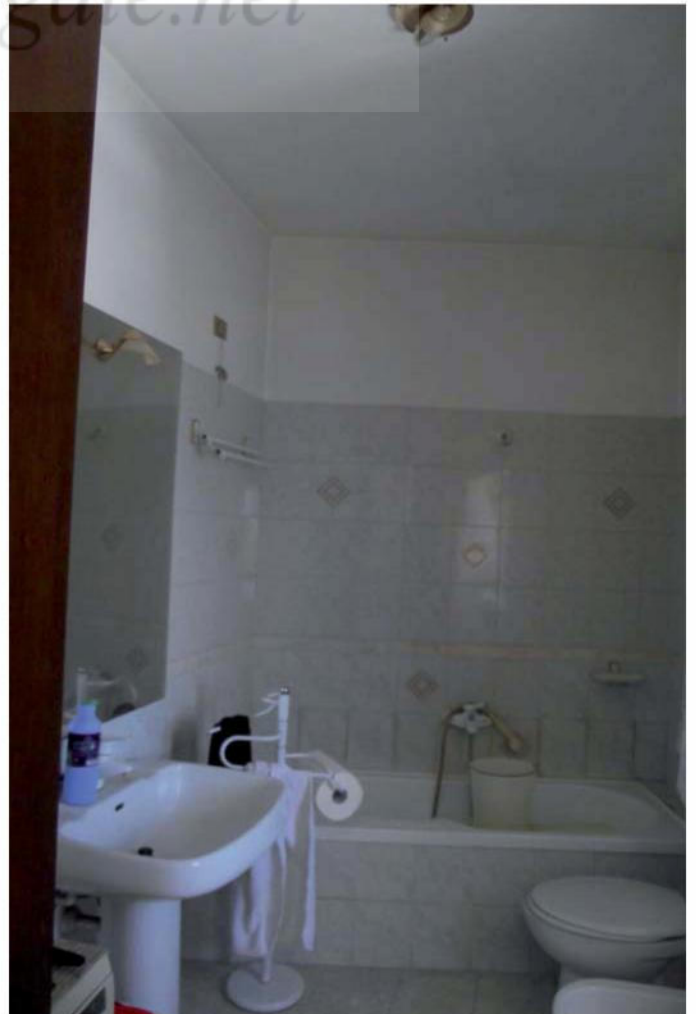
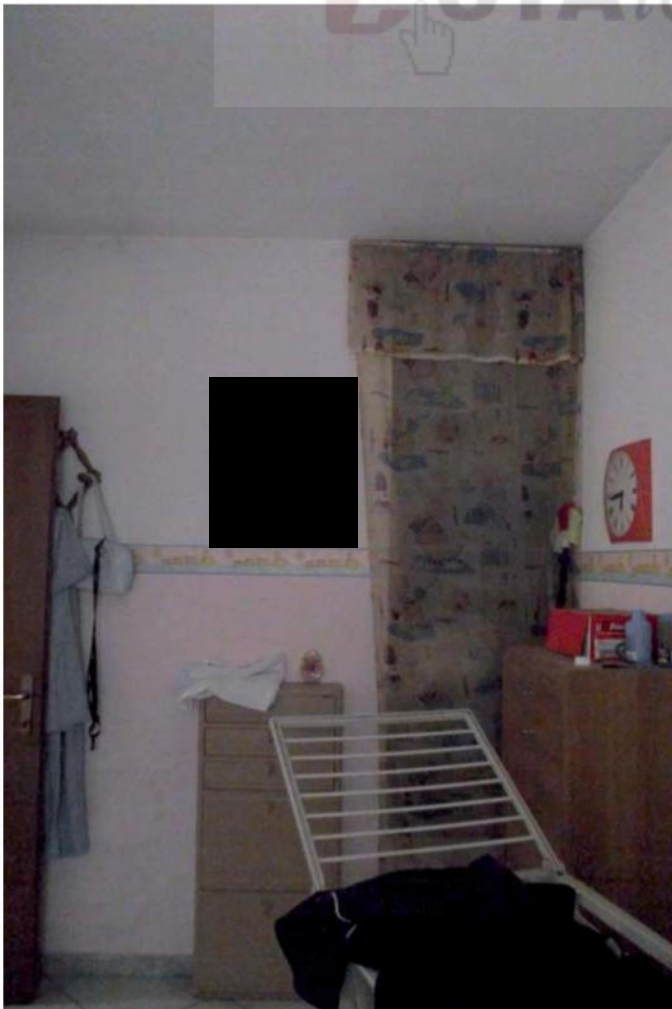
foto 8 9,10





foto 11, 12, 13

 ASTALEGALE.NET

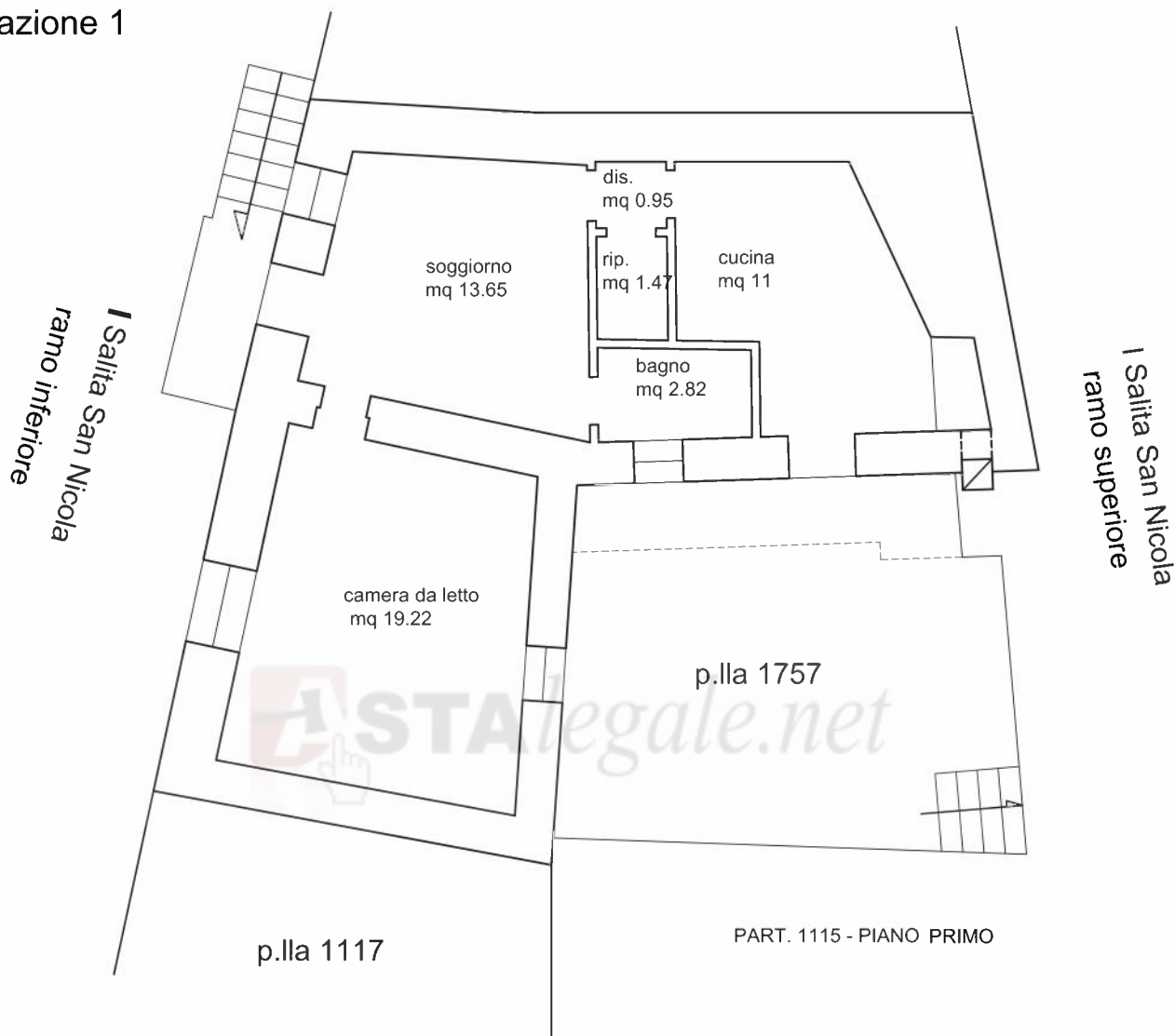


Firmato Da: FALCONE BARBARA Emesso Da: ARUBAPEC S.P.A. NG CA 3 Serial#: 41ea53944a381c987d3b28acce99491a

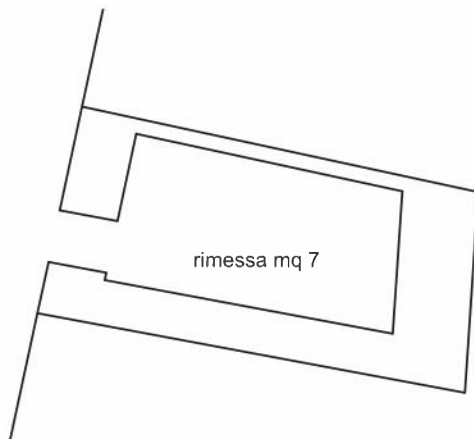


p.lla 1114

abitazione 1



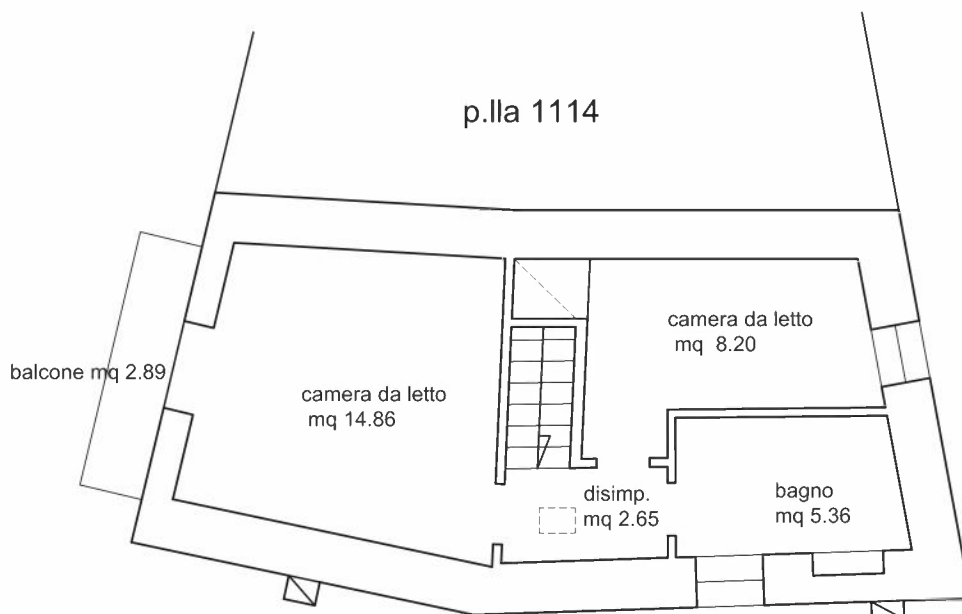
rimessa



N

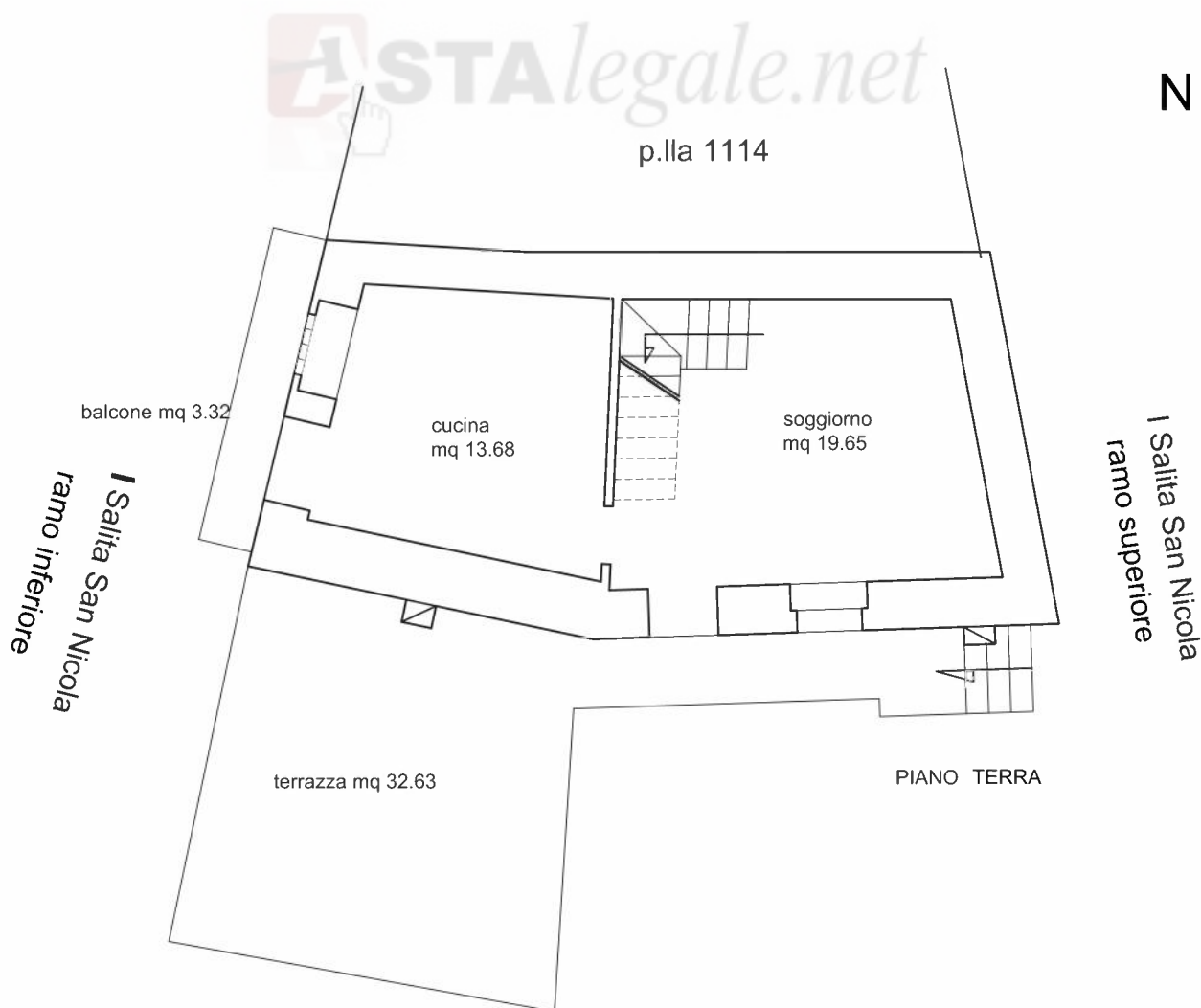
PART. 1116 SUB 1





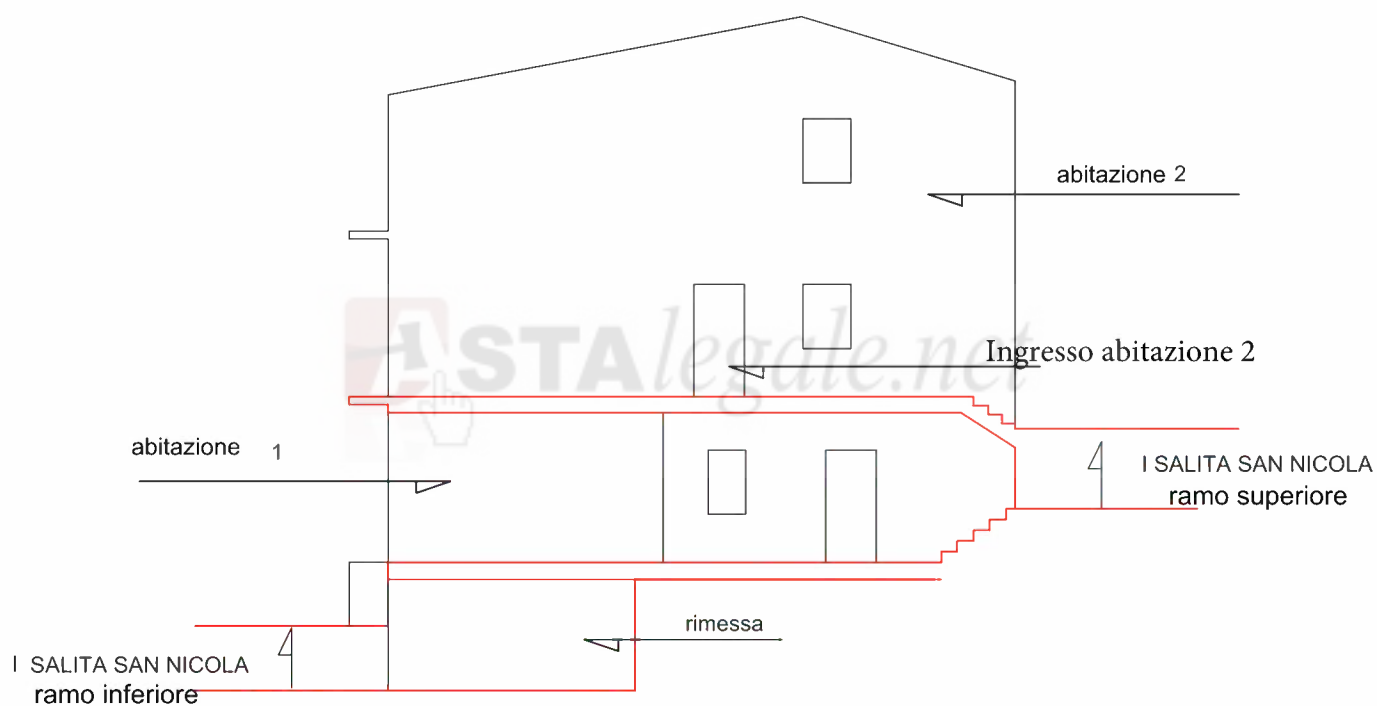
PIANO PRIMO

abitazione 2

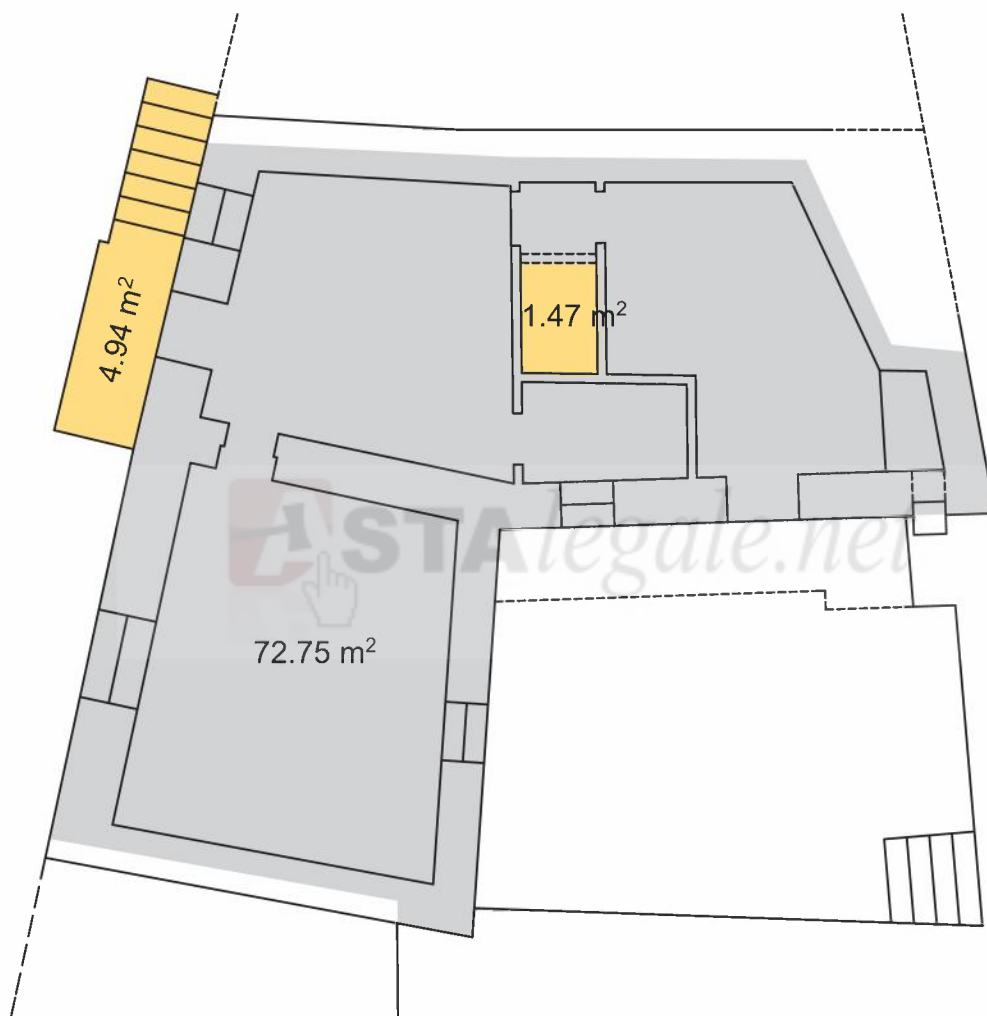


PIANO TERRA

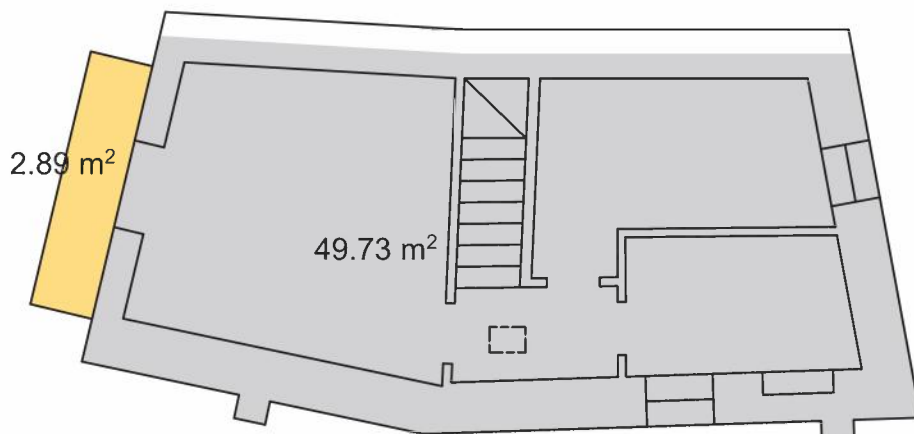
ANDAMENTO DEL TERRENO E SEZIONE IMMOBILI  
scala 1:100



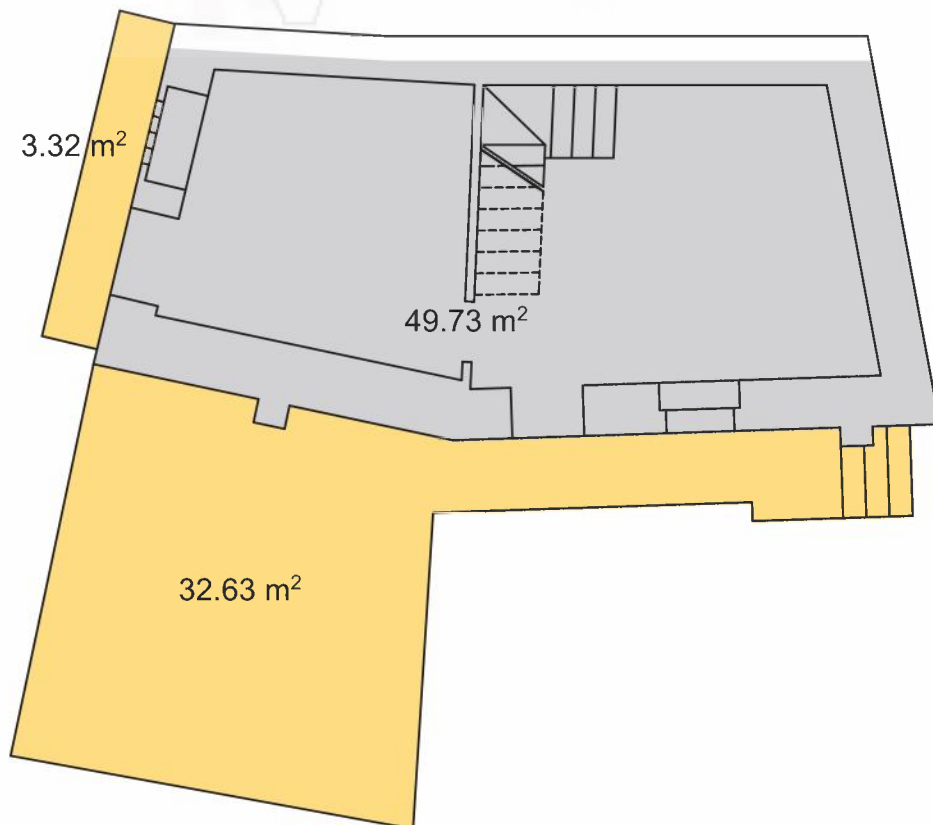
- Abitazione 1 - PART. 1115 PIANO PRIMO RISPETTO ALLA STRADA INFERIORE  
SUPERFICIE COMMERCIALE 76,70



PART. 1115 PIANO PRIMO RISPETTO ALLA STRADA SUPERIORE

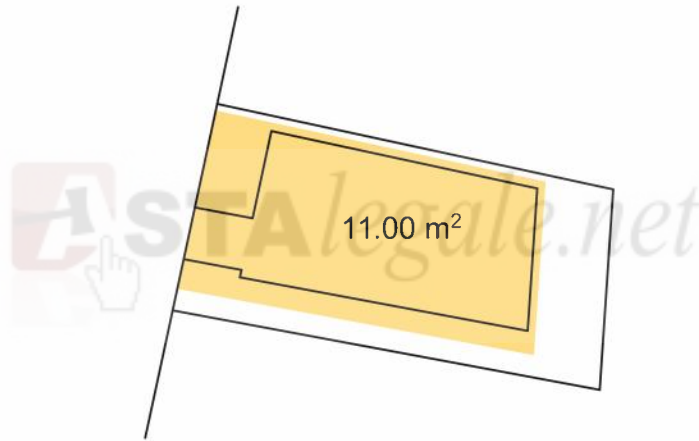


PIANO TERRA RISPETTO ALLA STRADA SUPERIORE

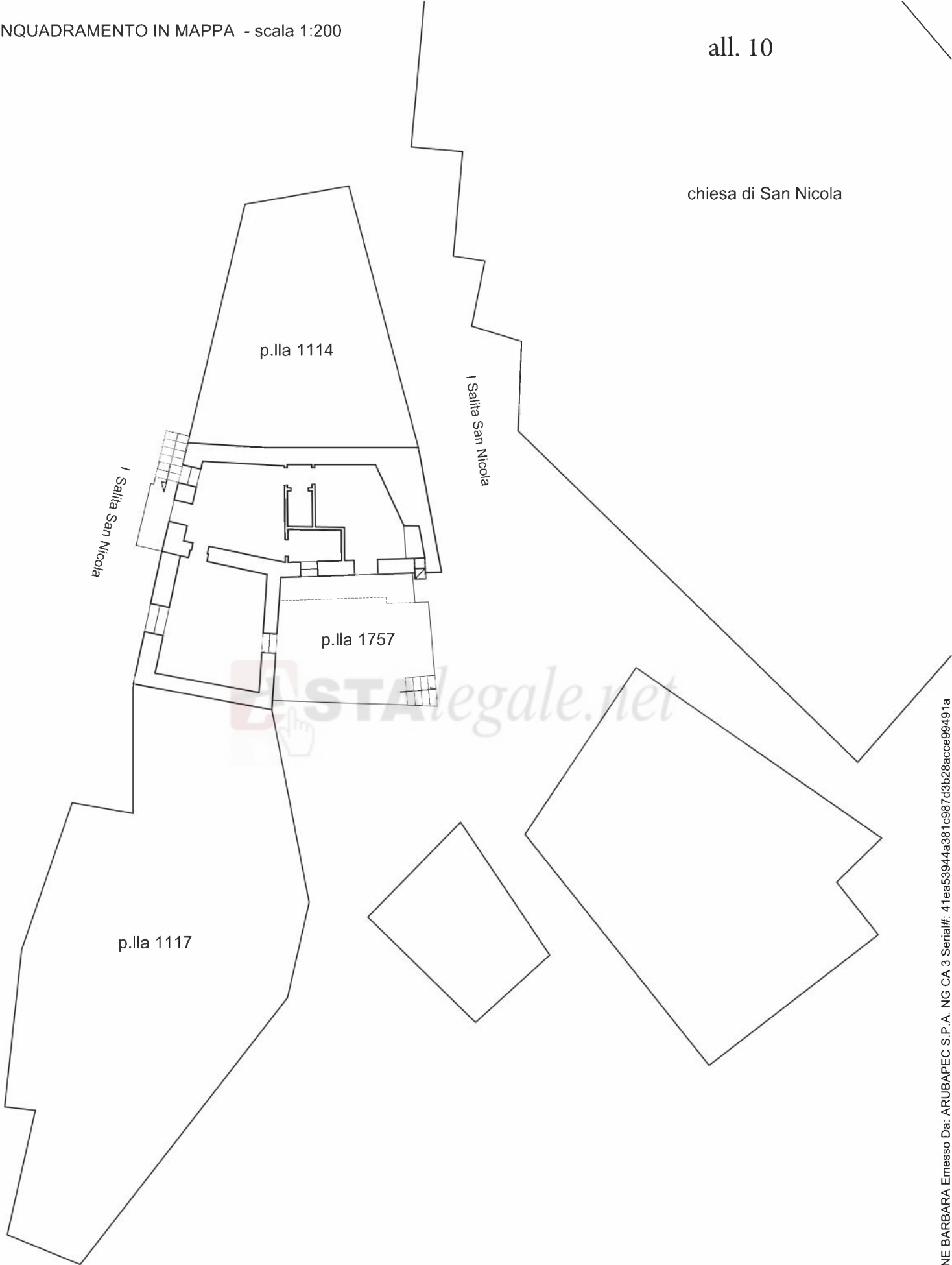


Astalegale.net

SUPERFICIE COMMERCIALE MQ 11



chiesa di San Nicola



N=62800

E=-9800

Direzione Provinciale di Chieti Ufficio Provinciale - Territorio - Direttore FRANCO SUSI

Vis. ord. (1.00 euro)



1 Particella 1116

Comune: PRETORO  
 Foglio: 6 All. A  
 Richiedente: CTU FALCONE BARBARA

Scala originale: 1:1000  
 Dimensione cornice: 267.000 x 189.000 metri

5-Giu-2019 11:18:29  
 Prot. n. CH0040608/2019

Firmato Da: FALCONE BARBARA Emesso Da: ARUBAPEC S.P.A. NG CA 3 Serial#: 41ea53944a381c987d3b28acce99491a