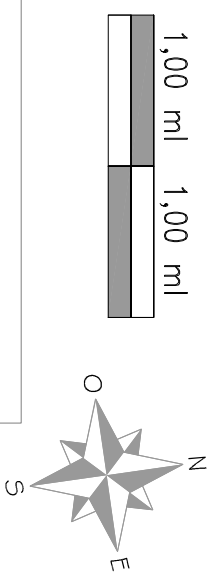
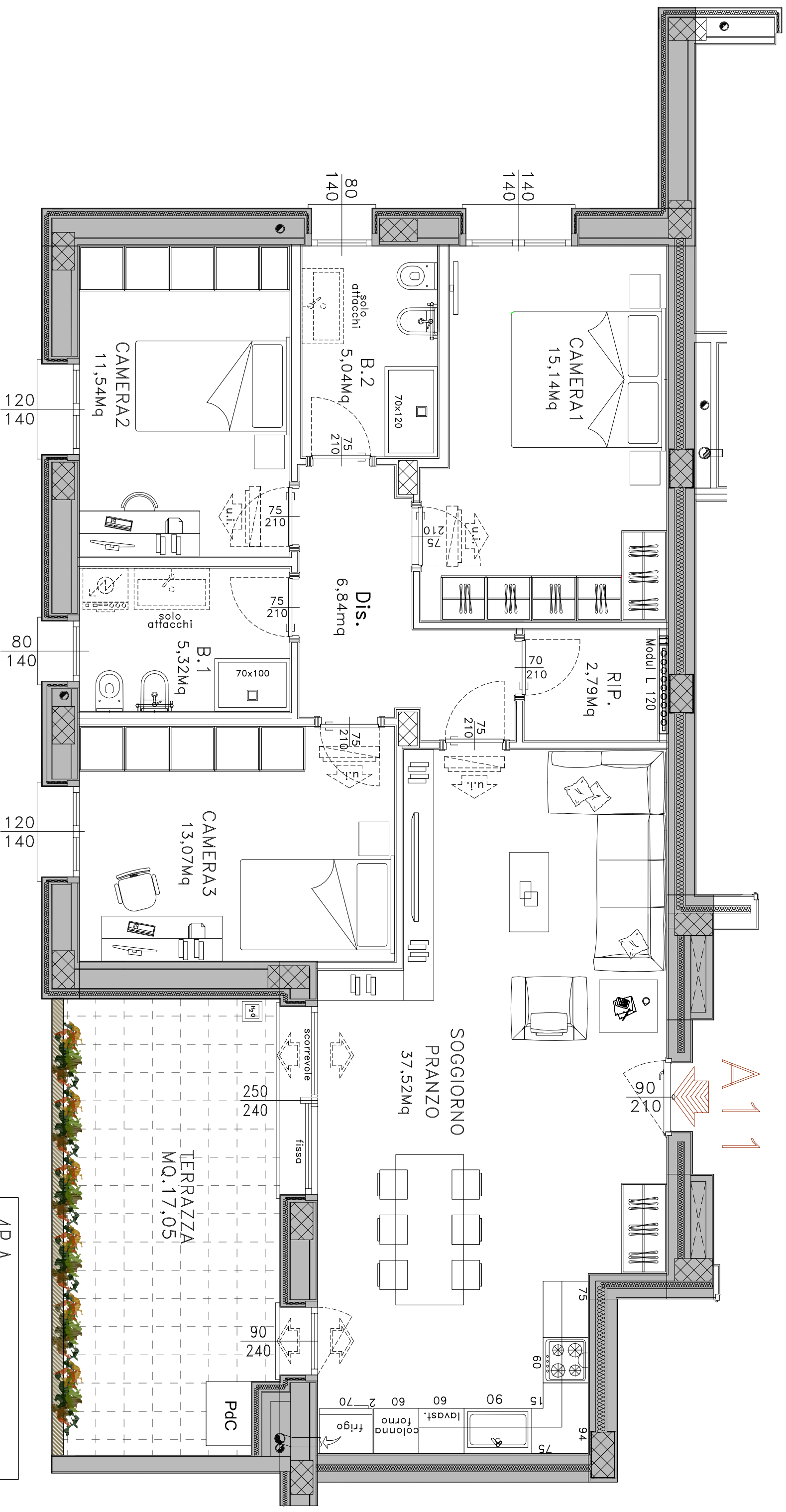



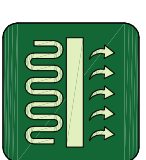


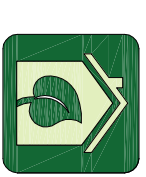


COMUNE DI GRANAROLO DELL'EMILIA (BO)
 -EDIFICIO SF10- VIA DELLA SOLIDARIETA',
 -VANO SCALA A-PIANO QUARTO-

SF10 - APPARTAMENTO 10-A11

Sup. Utile Appartamento 97,26 circa



-  EDIFICIO ANTISISMICO
-  ISOLAMENTO ACUSTICO
-  PANNELLI FOTOVOLTAICI
-  RISCALDAMENTO AUTONOMO A PAVIMENTO
-  PRED. IMP. RAFFRESCAMENTO
-  RISPARMIO ENERGETICO
-  GAS FREE

Le superfici rappresentate sono puramente indicative. Futura Costruzioni s.r.l. si riserva la facoltà di apportare in fase esecutiva piccole variazioni dovute a tolleranze pari di +/- 2% ed al dimensionamento di strutture portanti (pilastri), caveali tecnici e/o condotti.

