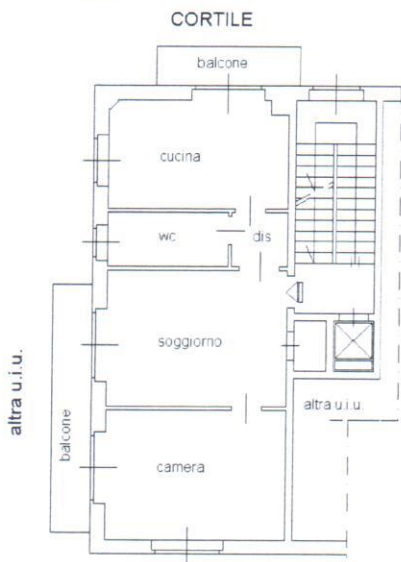


PIANTA PIANO SECONDO - 3^o f.t.

H=3,00m



VIA ROSSINI

PIANTA PIANO SESTO - SOTTOTETTO - 7^o f.t.

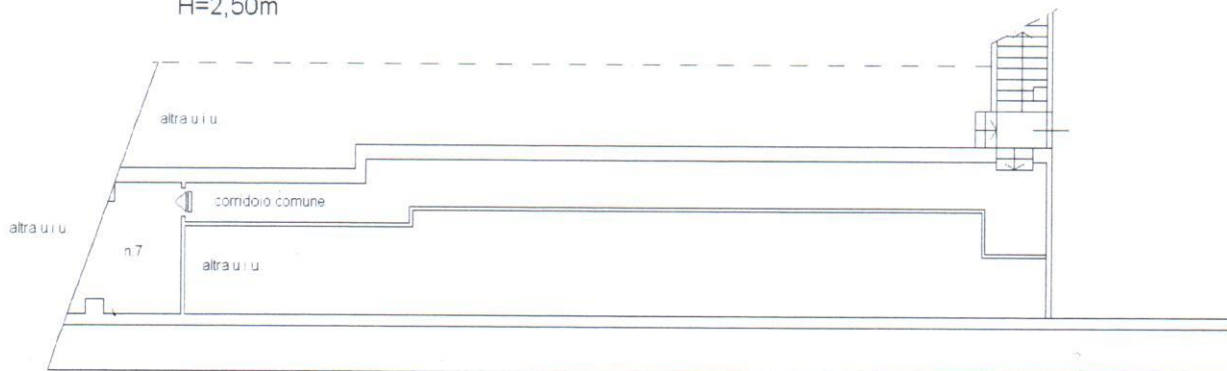
Hm=2,00m



VIA ROSSINI

PIANTA PIANO 2^o INTERRATO

H=2,50m



VIA ROSSINI

