

COMUNE DI ROMA
 XVI DIPARTIMENTO IX
 UFFICHE DI ATTUAZIONE DEGLI STRUMENTI URBANISTICI
 PROT. N. "64985"
 23 OTT. 2003
 N. ALL. N. INV.

familiare in località
 P. nucleo n° 20/A)
 n° 47810/2000
 NE EDILIZIA n° 139/C

S.P.O.R.
 DIPARTIMENTO IX URB. - EDIL. PRIVATA
 SERV. II° - SEZ. XVI
 ARCC. N° 64985/03
 VISTO II. 10/12/03
 IL DIRIGENTE



- PARTICOLARI COSTRUTTIVI

20
PARENTE FAVOREVOLI
 Delibera C.C. n° 3 del 13 e 16 Gennaio 1997
 Il responsabile del procedimento

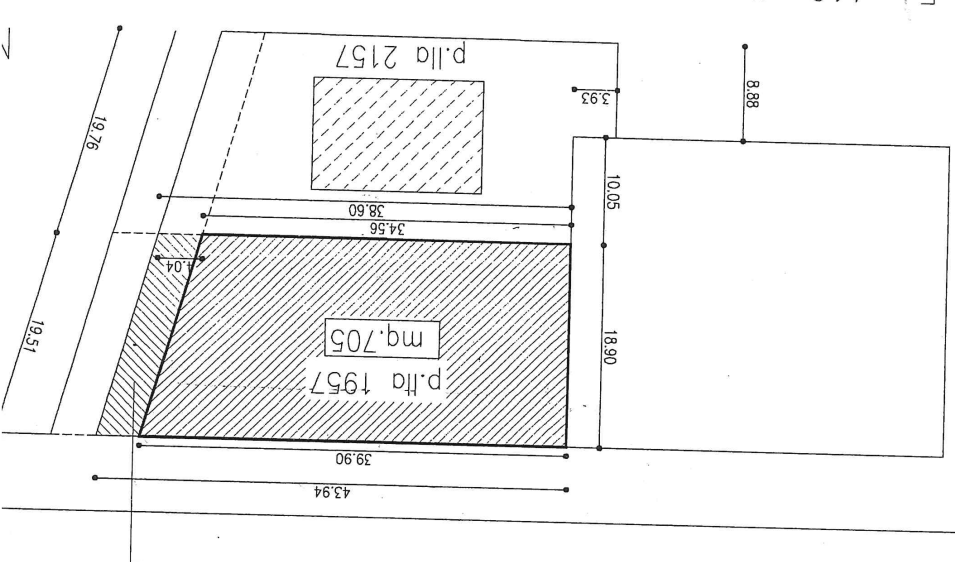


Fig. 410 all. 864
 Superficie al netto dell'area ceduta per sede stradale: mq. 705
 Planimetria catastale
 Scala 1:500

TABELLA RIASSUNTIVA PLANOVOLUMETRIA

Zona: "0" - P.P. nucleo n° 20 - Massimina/A

DATI DI PROGETTO

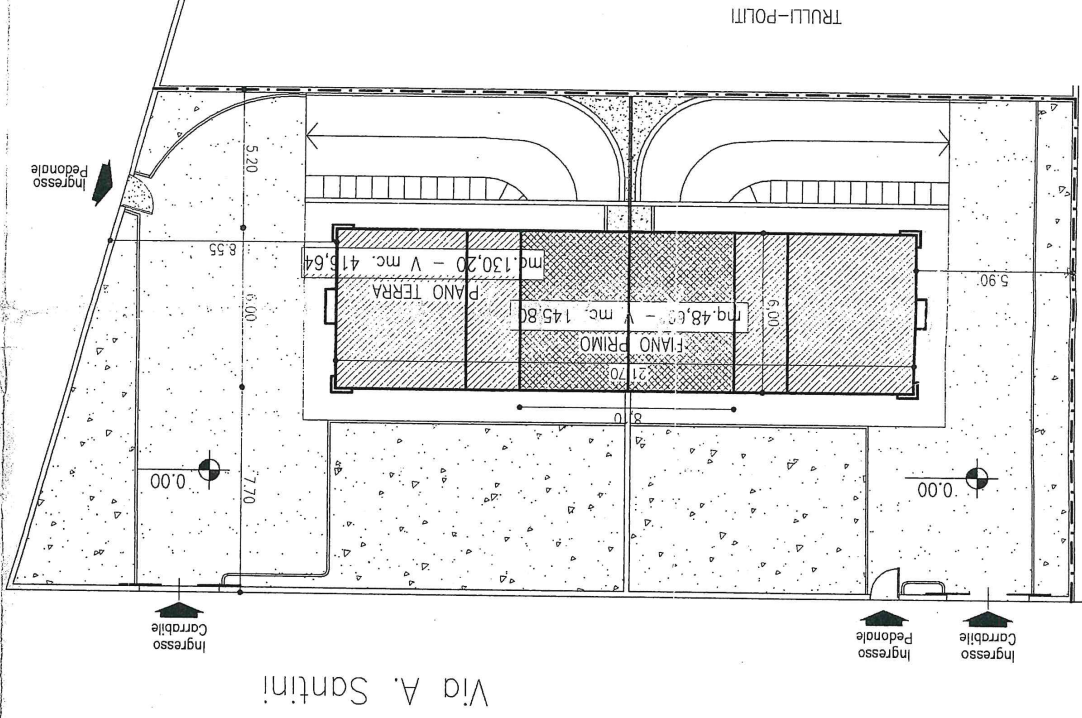
Lotto minimo mq. 600
 L.F.F.: 0.8 mc/mq
 Hmax: mt. 7.50
 Distacco confini: mt. 5.00
 Distacco dal filo stradale: mt. 7.50 min. mt. 7.50
 Volume max edificabile: mc. 564
 Volume dell'edificio: mc. 562,44
 Sup. P.S.: mq.(21,7x6,0)= mq.130,2
 Sup. cop. P.T.: mq.(21,7x6,0)= mq.130,2 x 3.20 = mc. 417,6
 Sup. cop. P.P.: mq.(8,1x6,0)= mq.48,6 x 3.00 = mc. 145,8

Superficie min. parcheggio: 1/10 (mq.56,24) Superficie a parcheggio in progetto: mq. 562,44
 Aree sistemate a verde: mq. 215,42

Alberi da mettere a dimora: min. 3 ogni 200 mq sup. libera
 Alberi da mettere a dimora:
 n. 10 (3+7) > di 9 (sup. libera mq. 574,80)
 + n. 14 (9+5) alberelli
 Quercus Ilex (Leccio) n. 6 (2+4)
 Tilia Tomentosa (Tiglio) n. 2 (0+2)
 Magnolia Grandiflora (Magnolia) n. 2 (1+1)
 + Laurus Nobilis (Alloro)-alberello- n.14 (9+5)

Scala 1:200

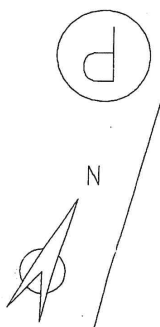
Planimetria con sagome superficiali e volumetriche



14,20
14
8
16,64

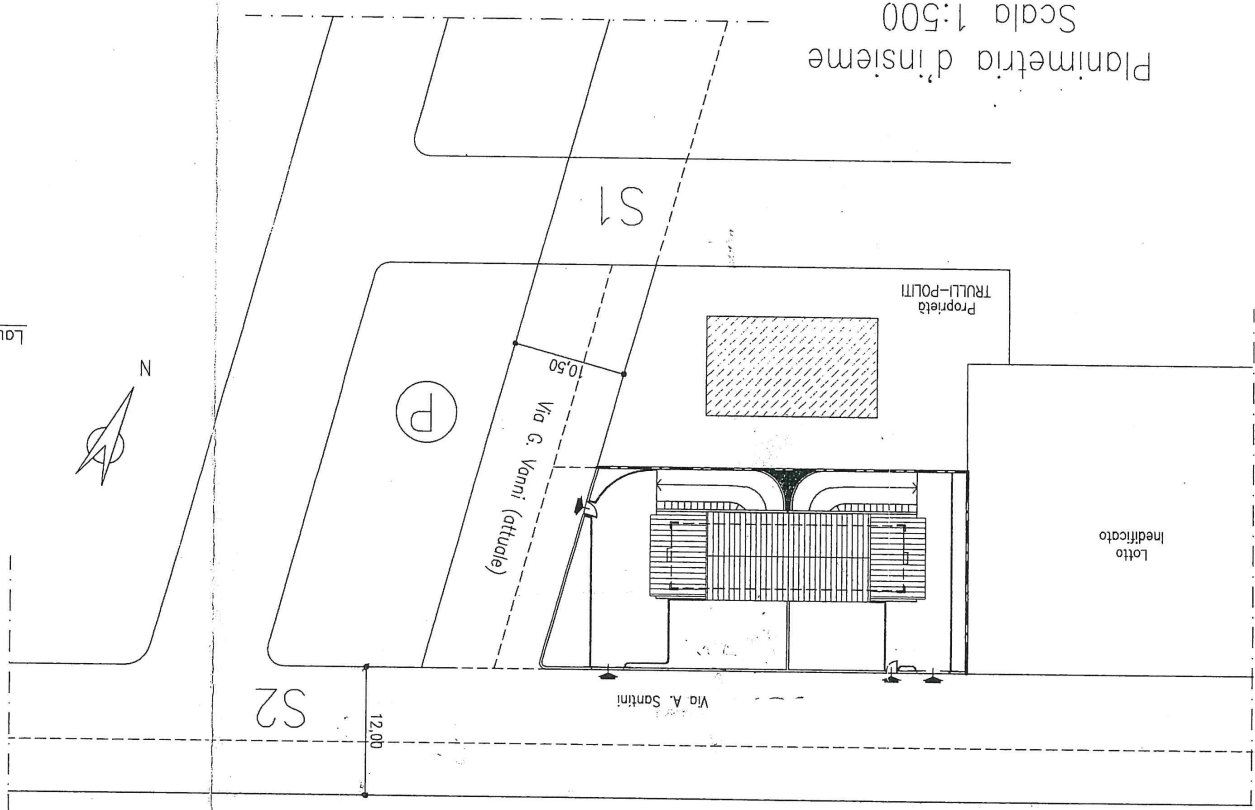
Via G. Vanni

Via A. Santini



Scala 1:500

Planimetria d'insieme



Via G. Vanni (attuale)

S2

S1

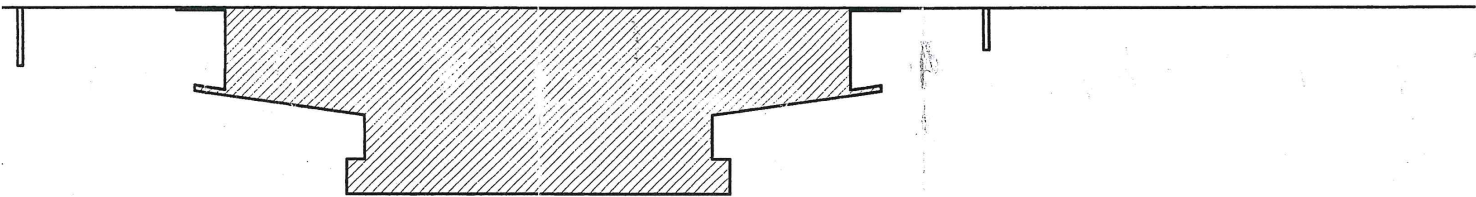
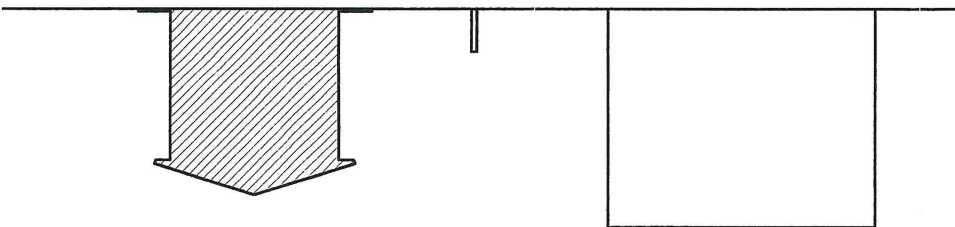


Laurus Nobilis (Alloro)

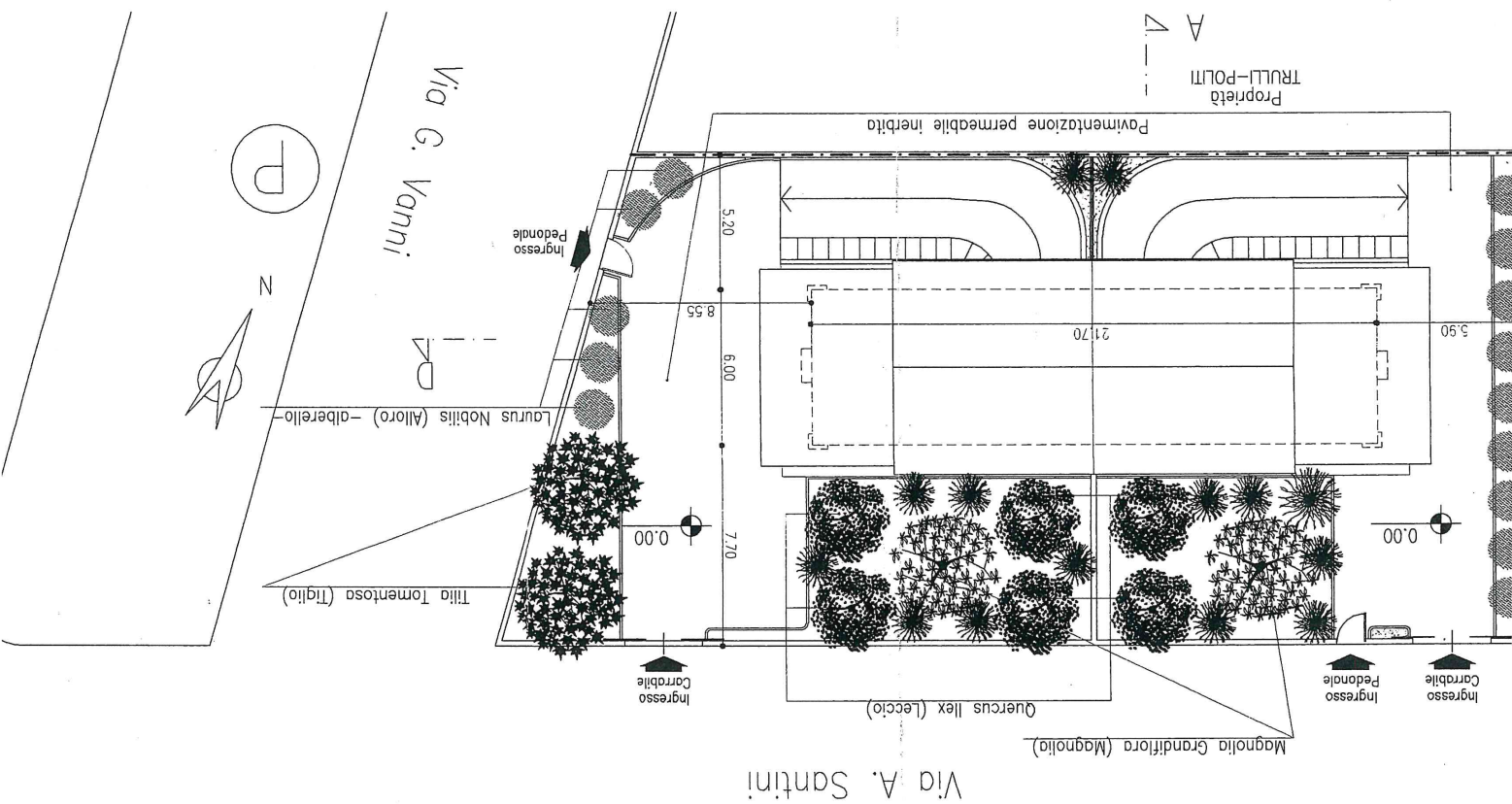
4

Profilo A-B

Profilo C-D
Scala 1:200

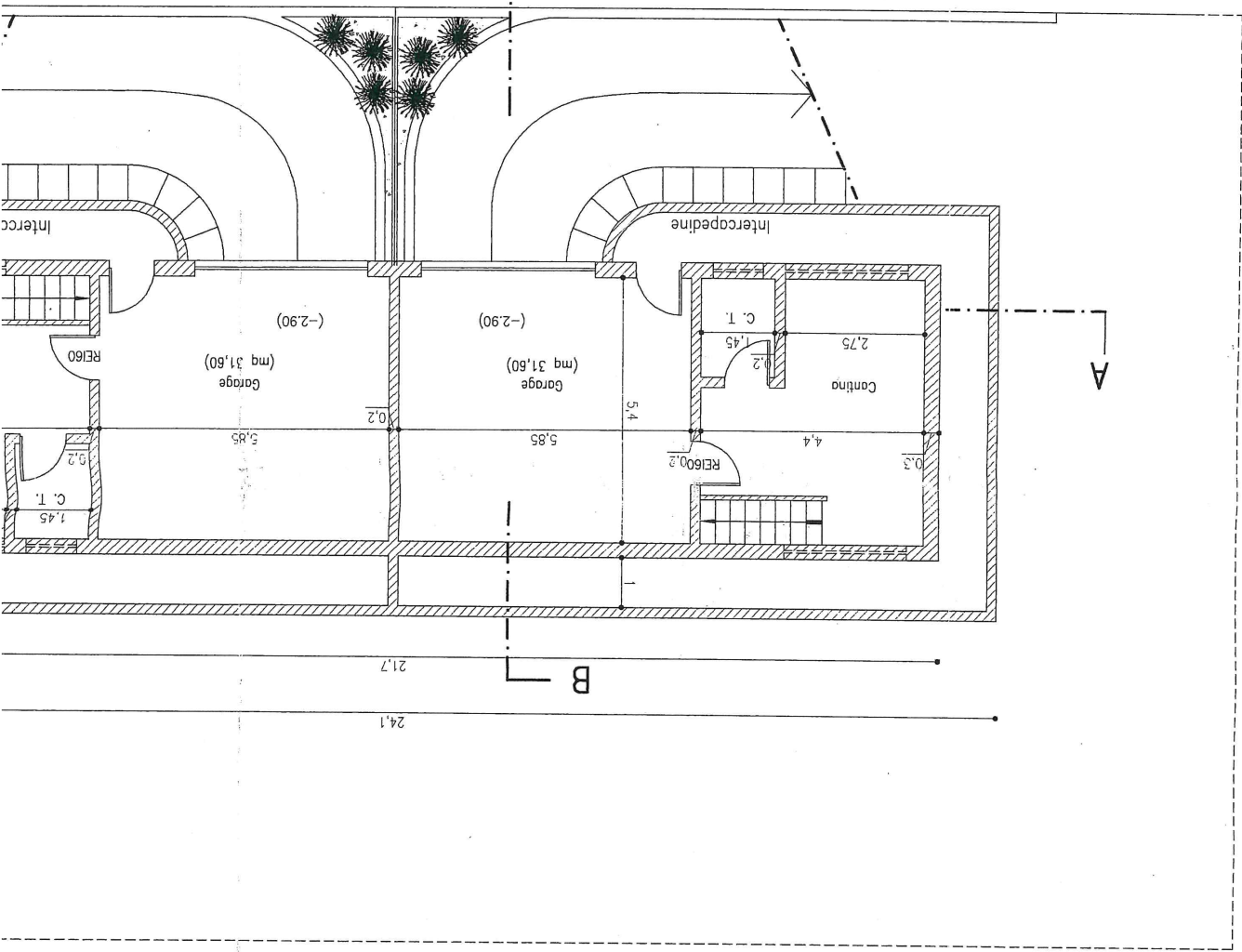


Planimetria del lotto (con previsioni P.P.)
Scala 1:200

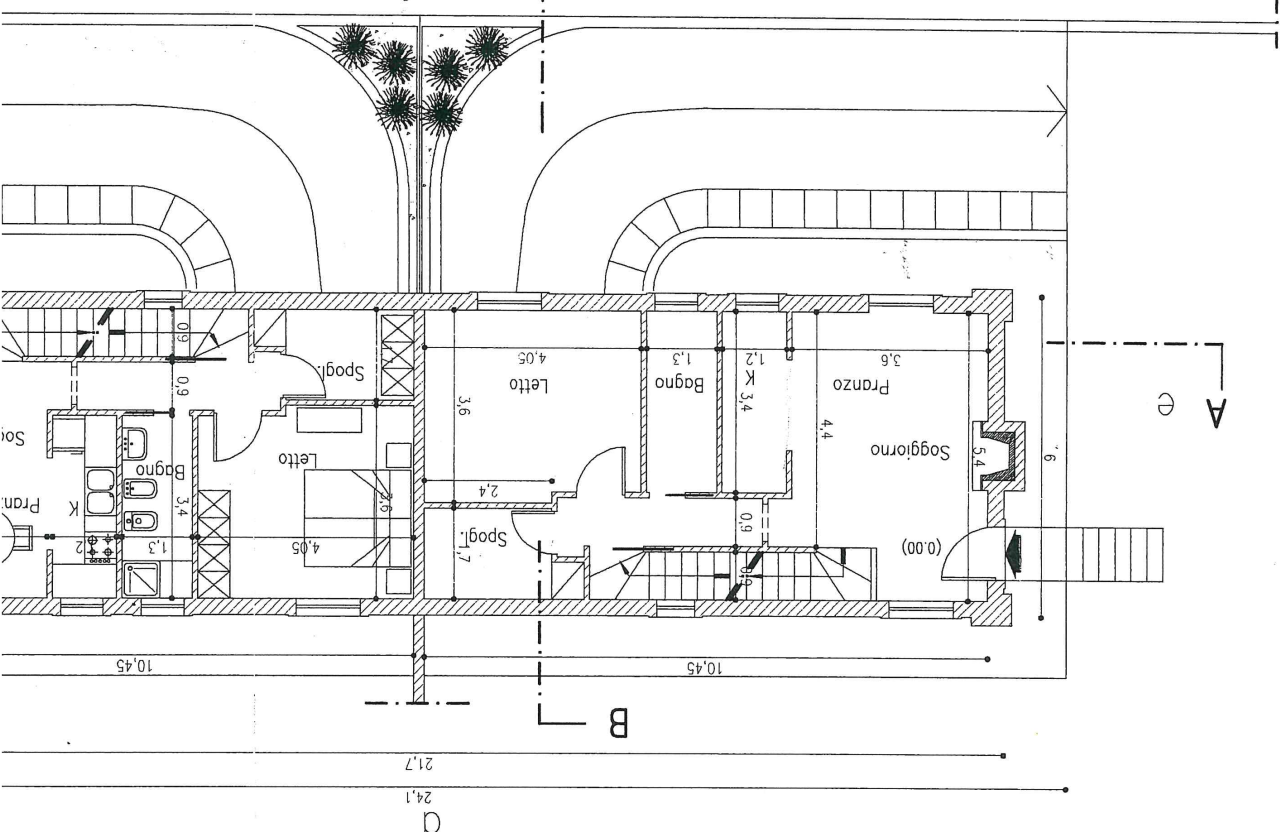


B

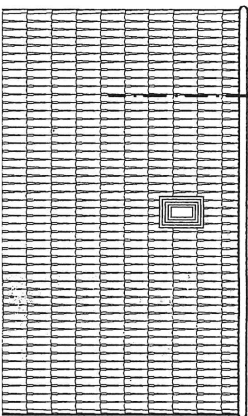
Pianta Scantinato
Scala 1:100



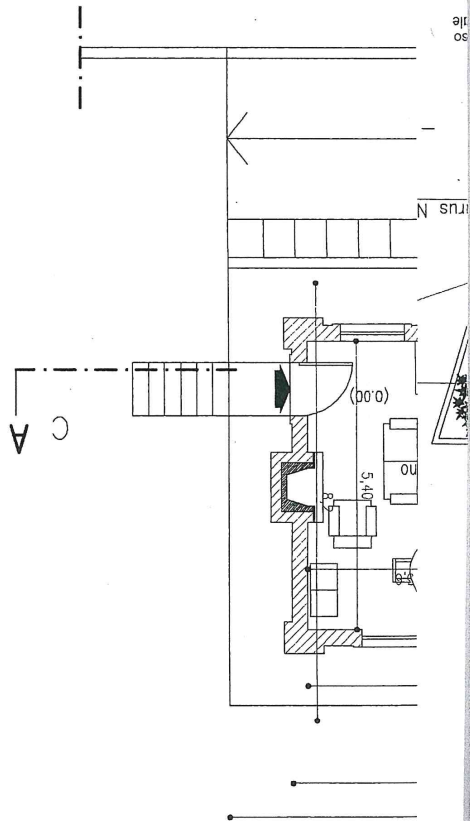
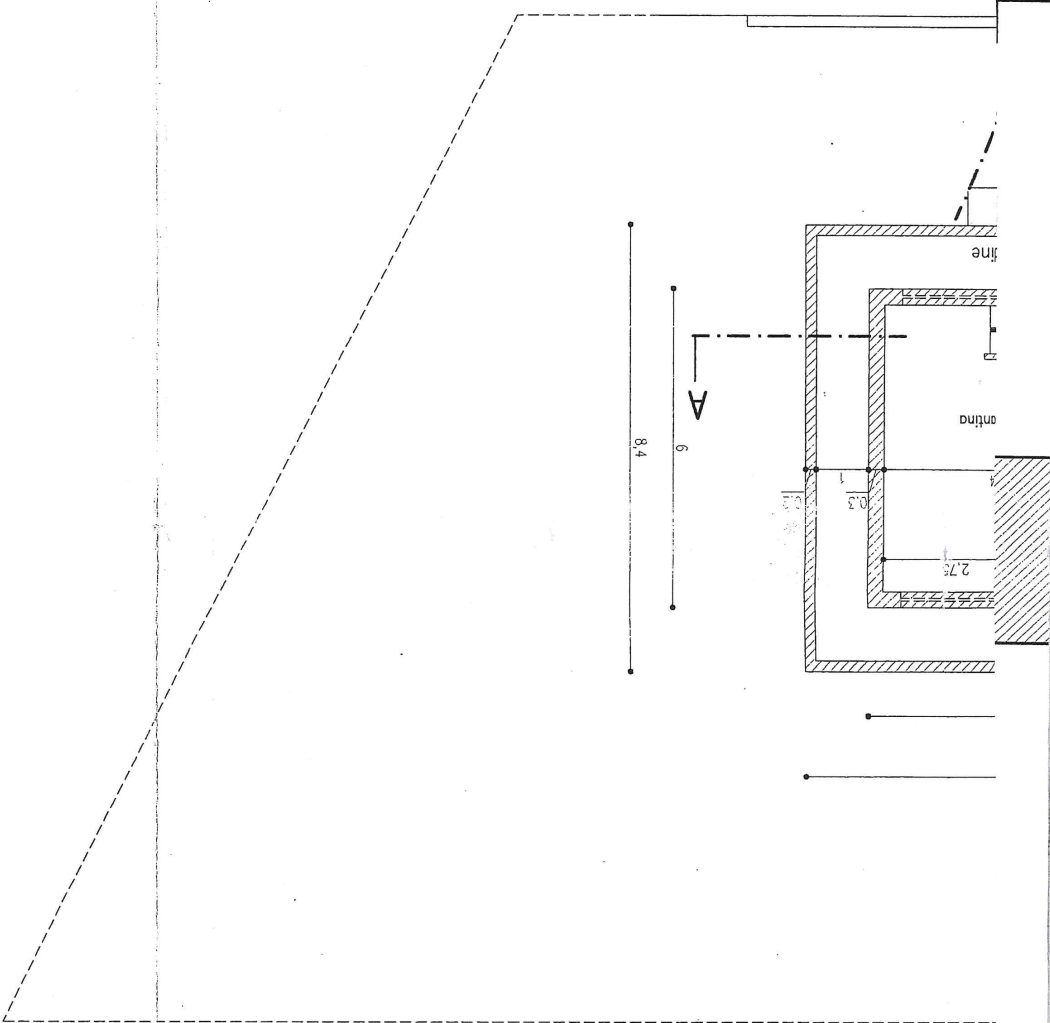
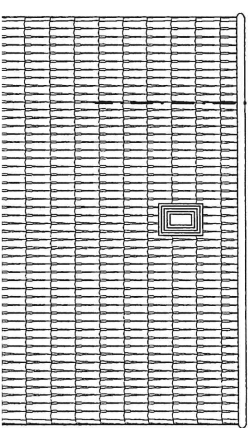
Pianta Piano Terra
Scala 1:100



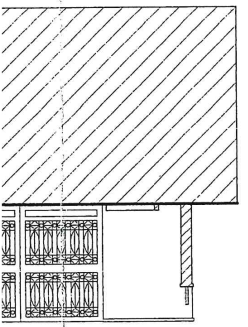
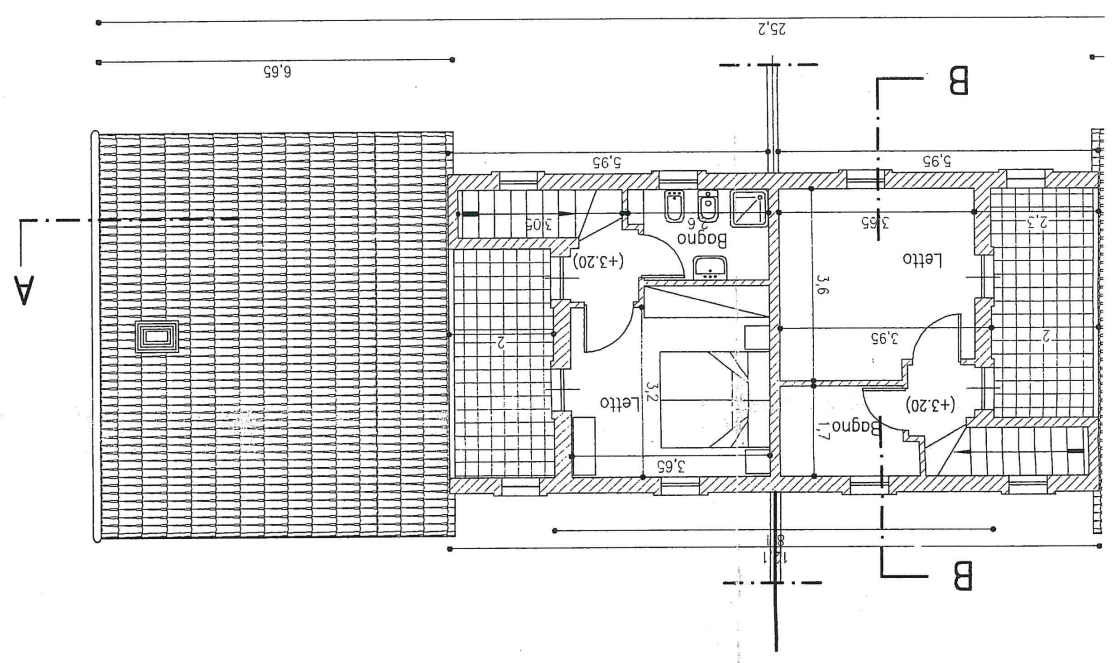
6.65



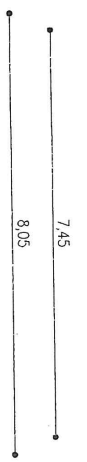
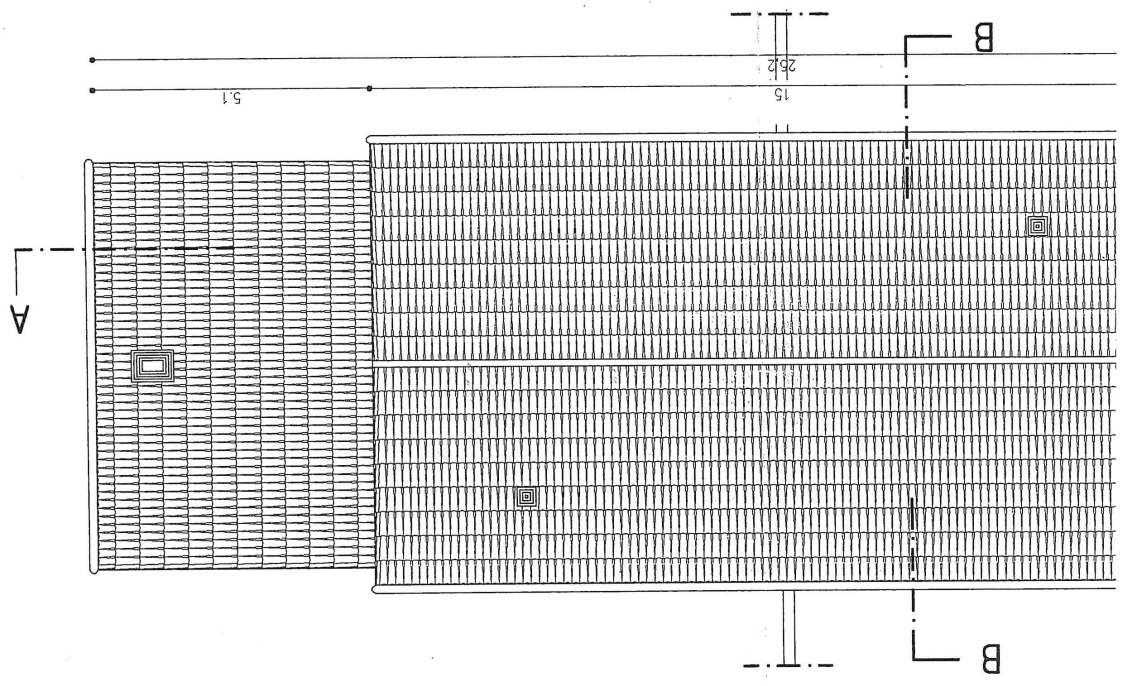
5.1



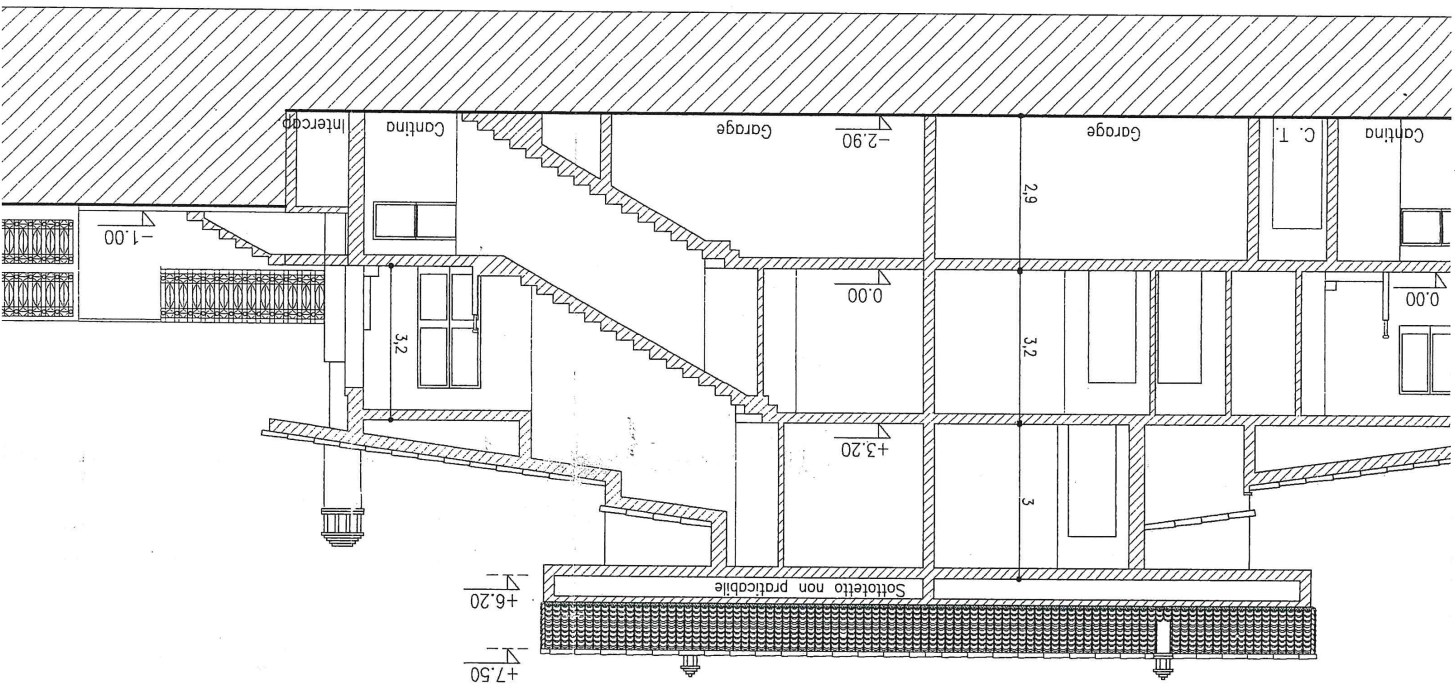
Pianta Piano Primo
Scala 1:100



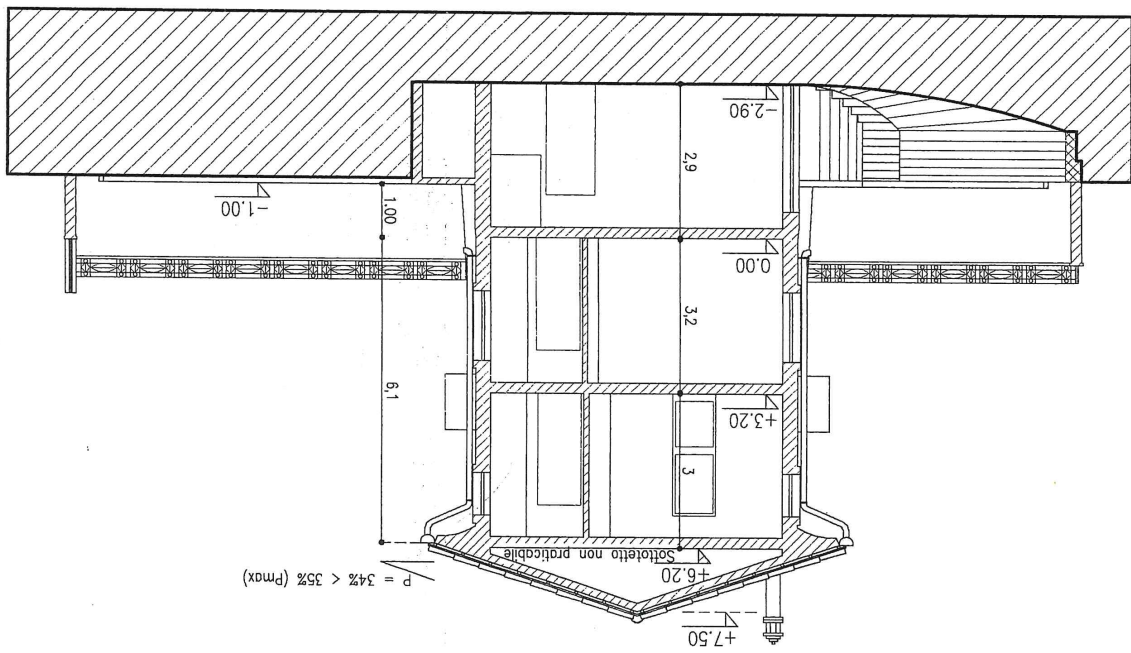
Pianta Coperture
Scala 1:100

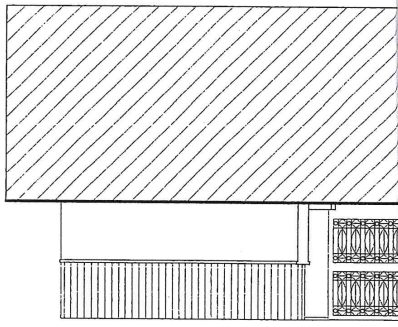


Sezione A-A

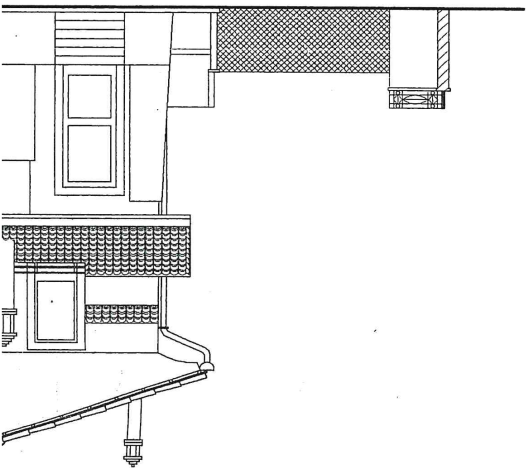


Sezione B-B

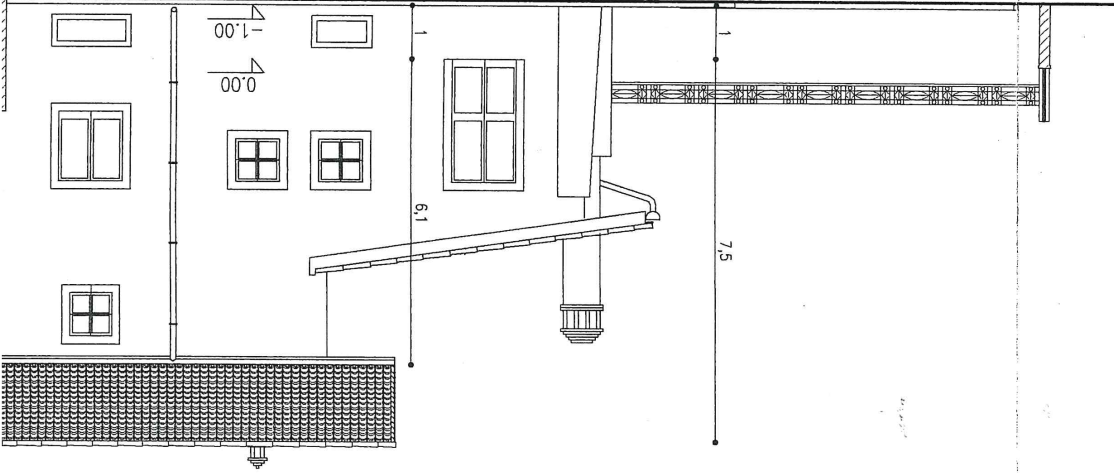




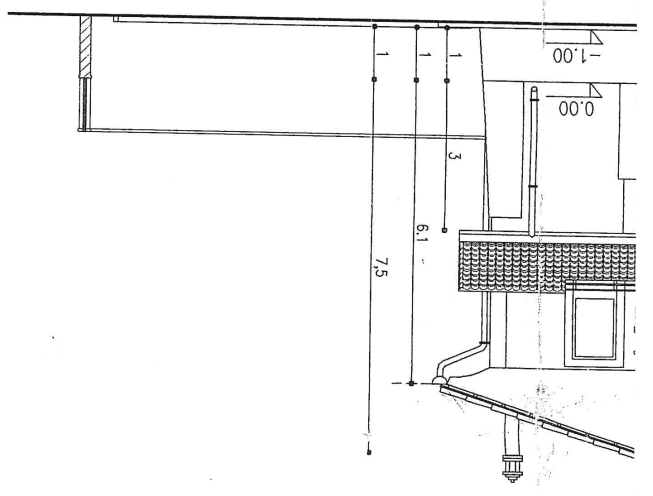
Prospe



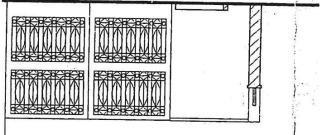
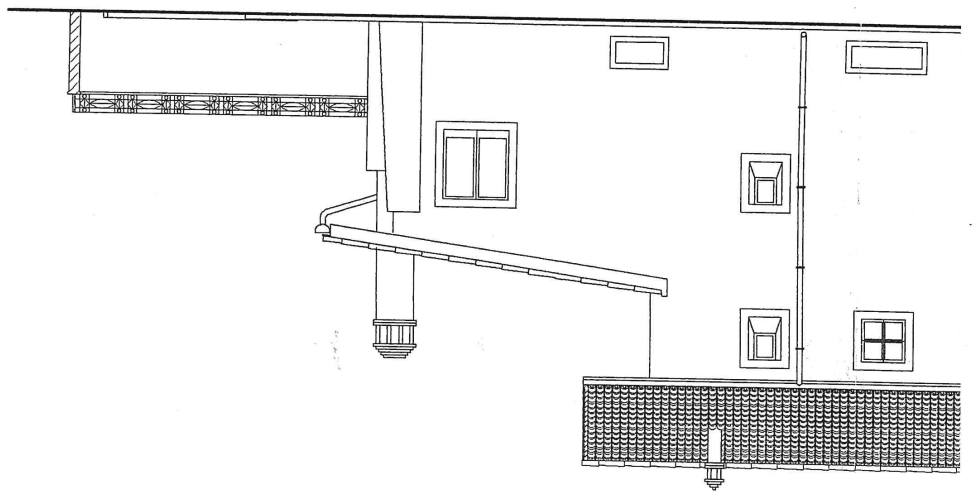
Prospett



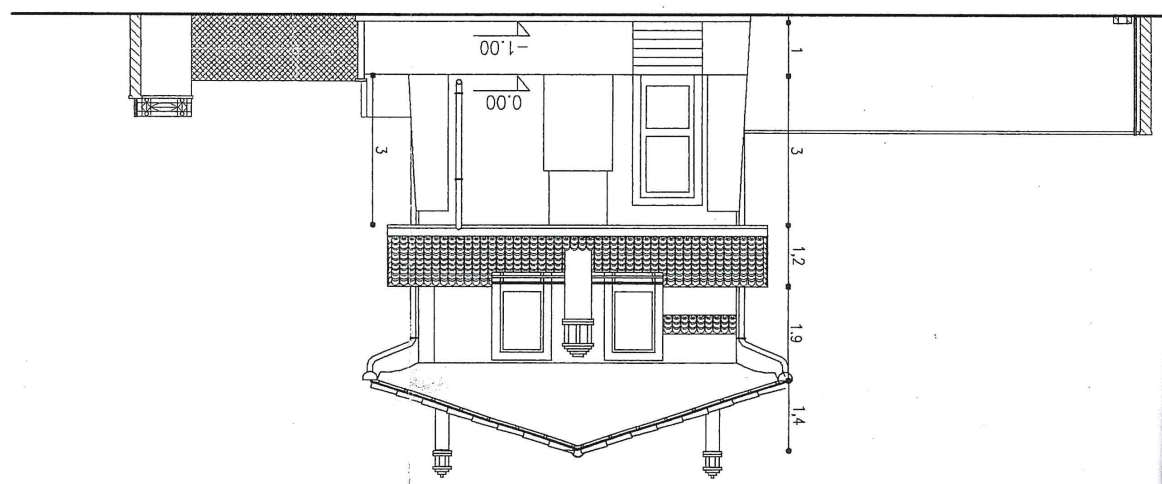
to "C"



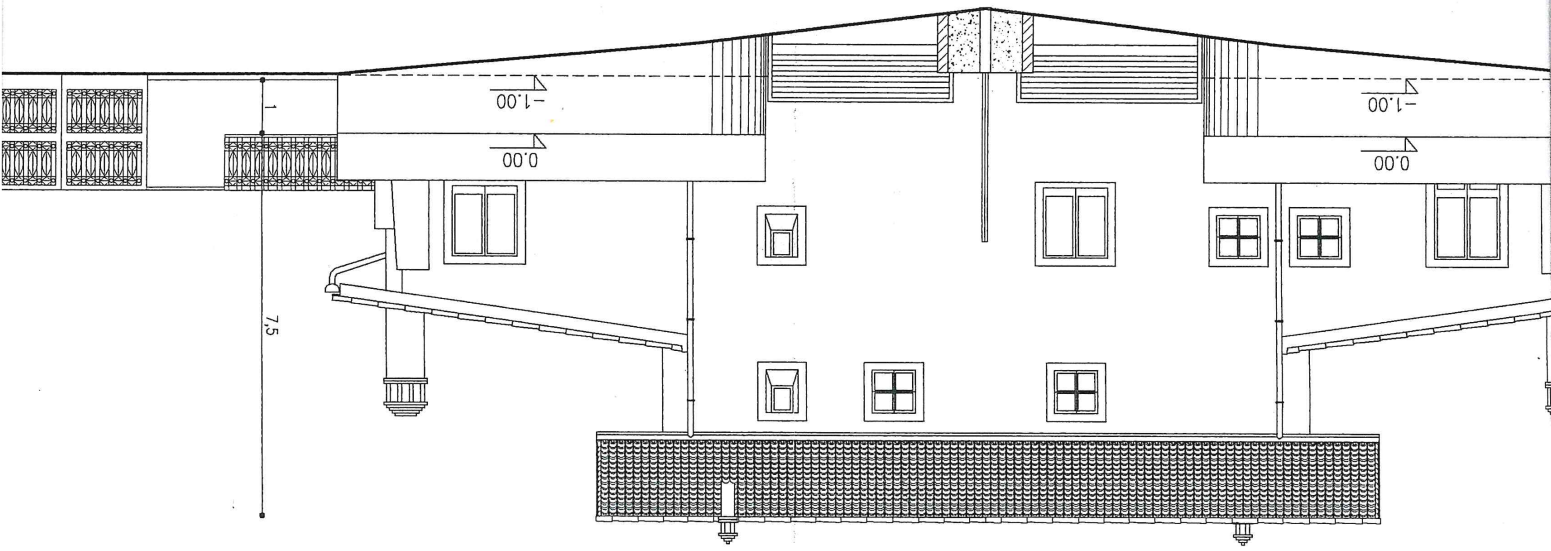
"D"



Prospetto "e"



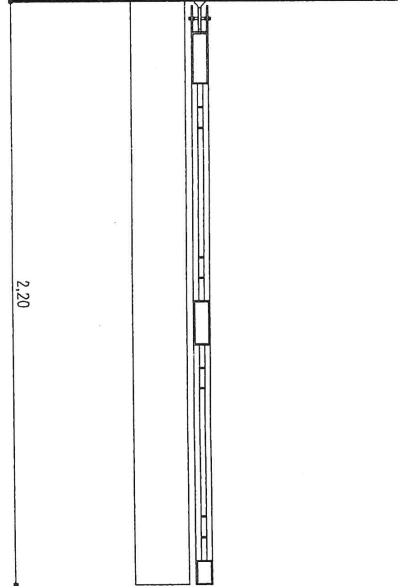
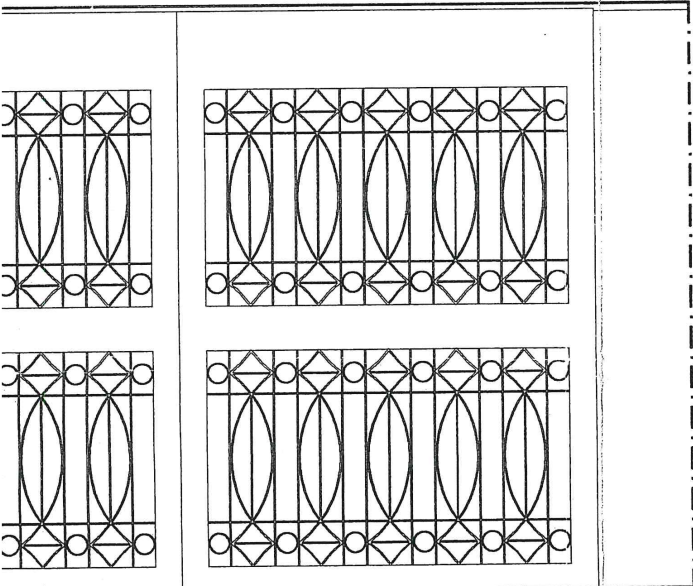
Prospetto "f"



Particolare Cannello d'Ingresso Carrabile
Scala 1:20

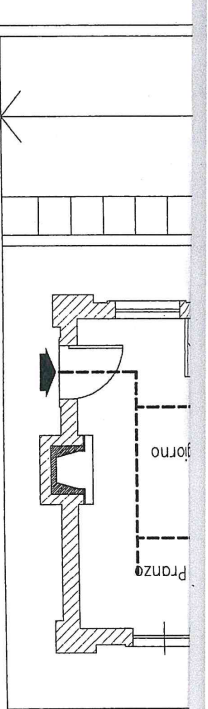
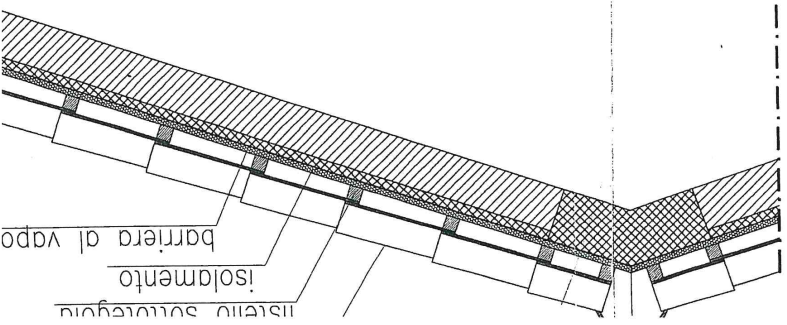
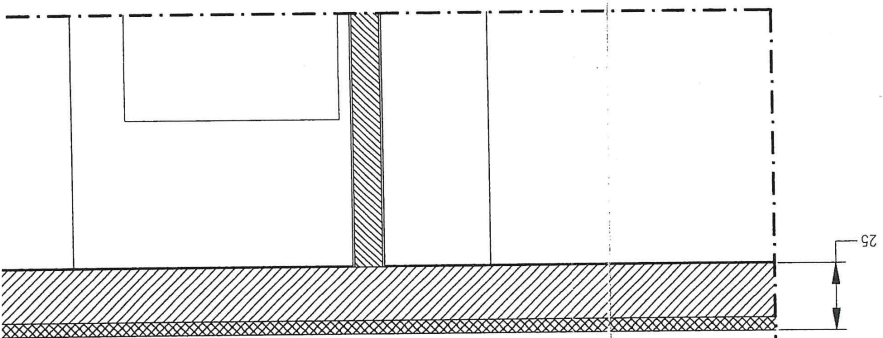
Prospetto

Sezione

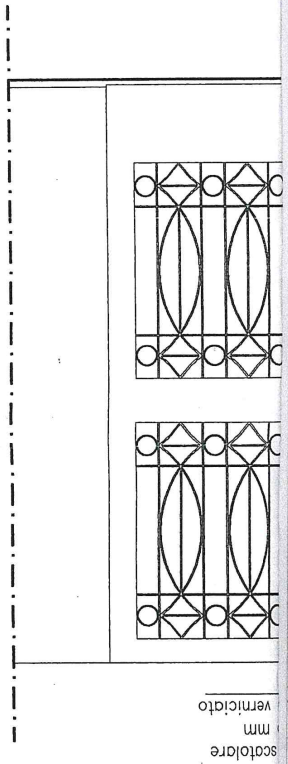
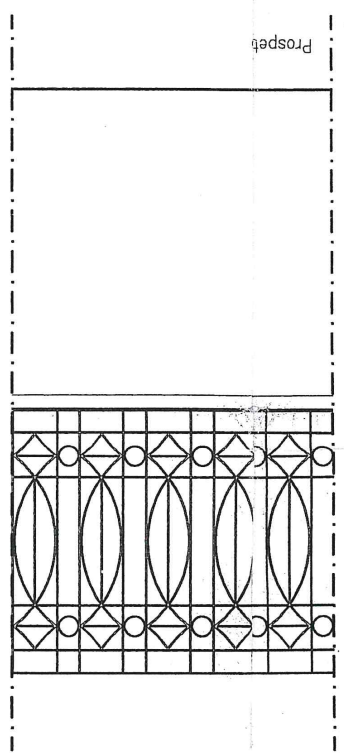
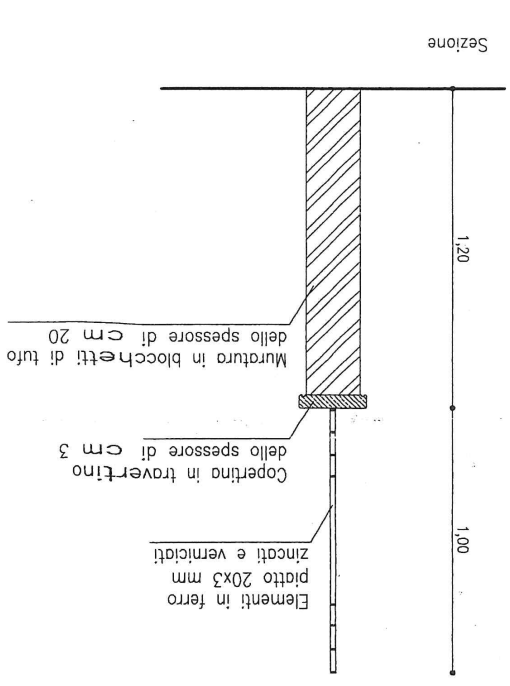


Te
1C
Zil

Particolare Copertura
Scala 1:20



Particolare della Recinzione
Sala 1:20

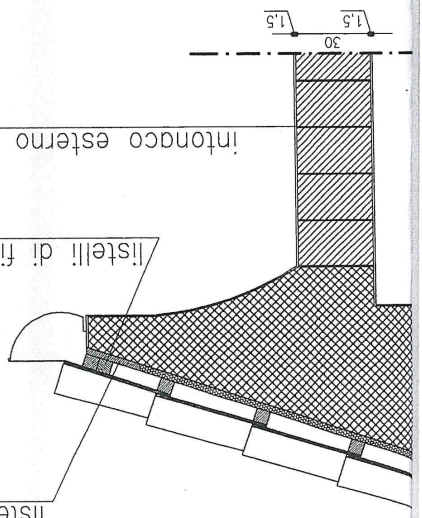


$$P = 34\% > 35\% (P_{max})$$

listelli di fissaggio canale di gronda e tiranti

intonaco esterno a "mezzo stucco"

listello di gronda



etto