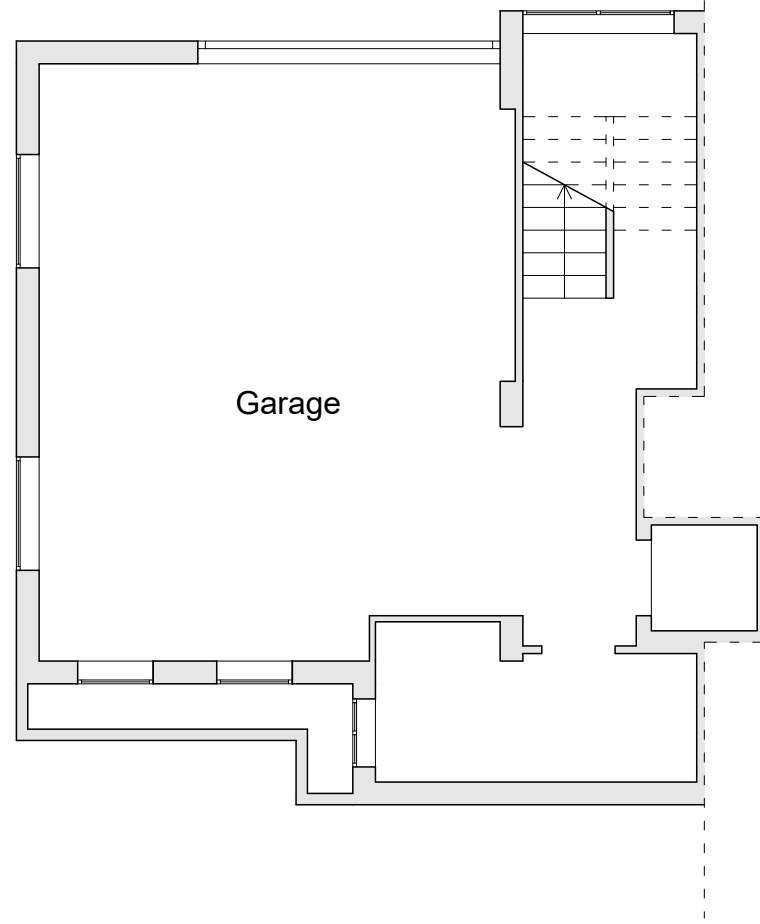
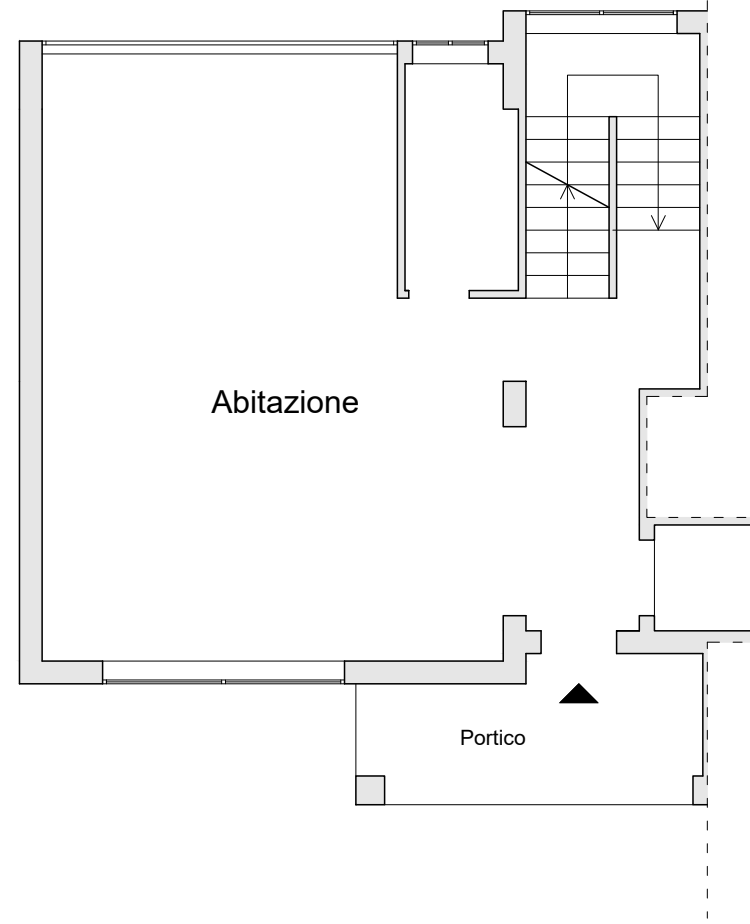


Piano seminterrato



Piano rialzato



Piano Seminterrato
Garage.....77 mq

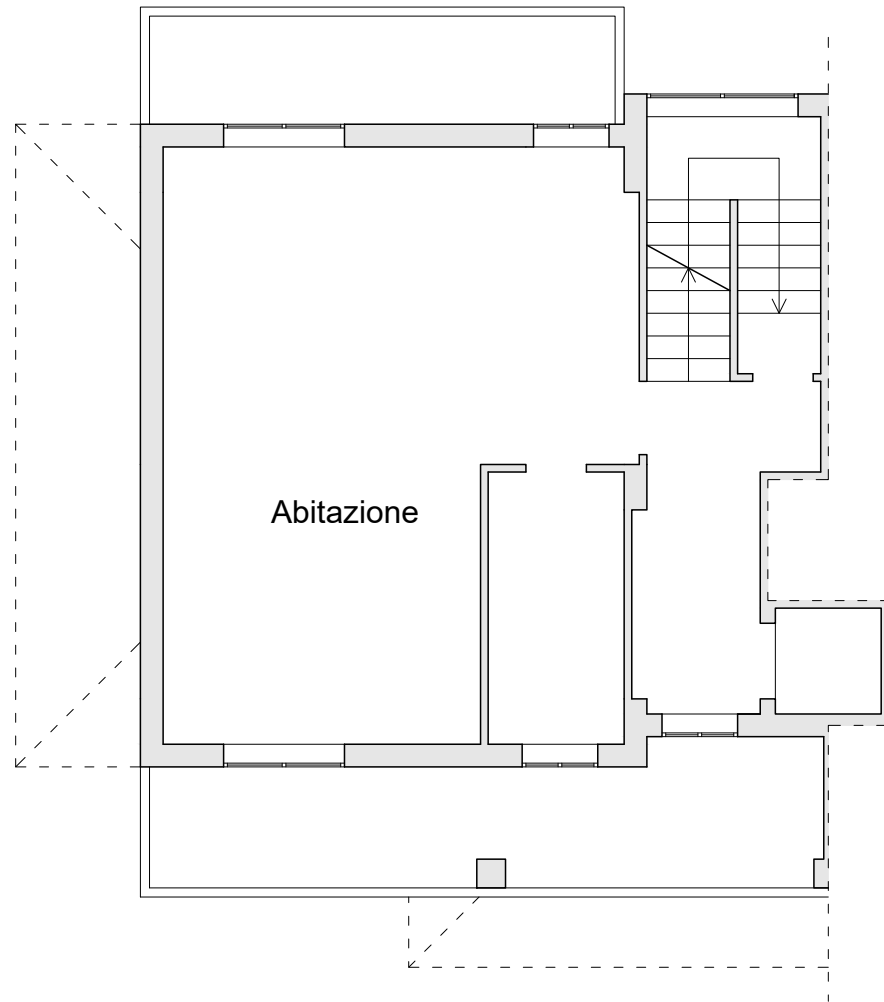
Piano Terra
Abitazione.....69 mq
Portico.....8 mq

Piano Primo
Abitazione.....69 mq
Balconi.....27 mq

Piano Secondo (sottotetto)
Abitazione.....69 mq
Balconi.....14 mq

Vano scale.....8 mq

Piano primo



Piano secondo sottotetto

