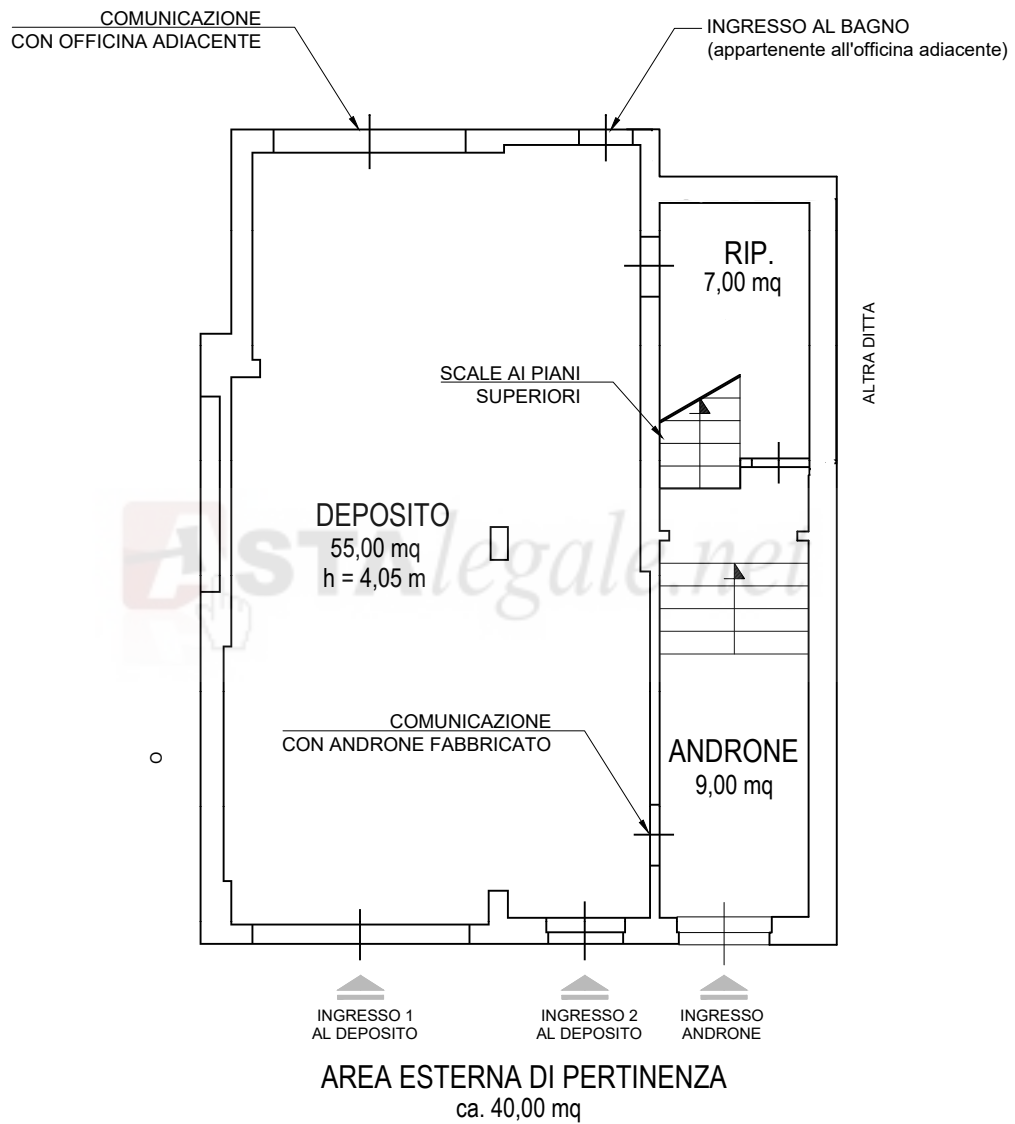
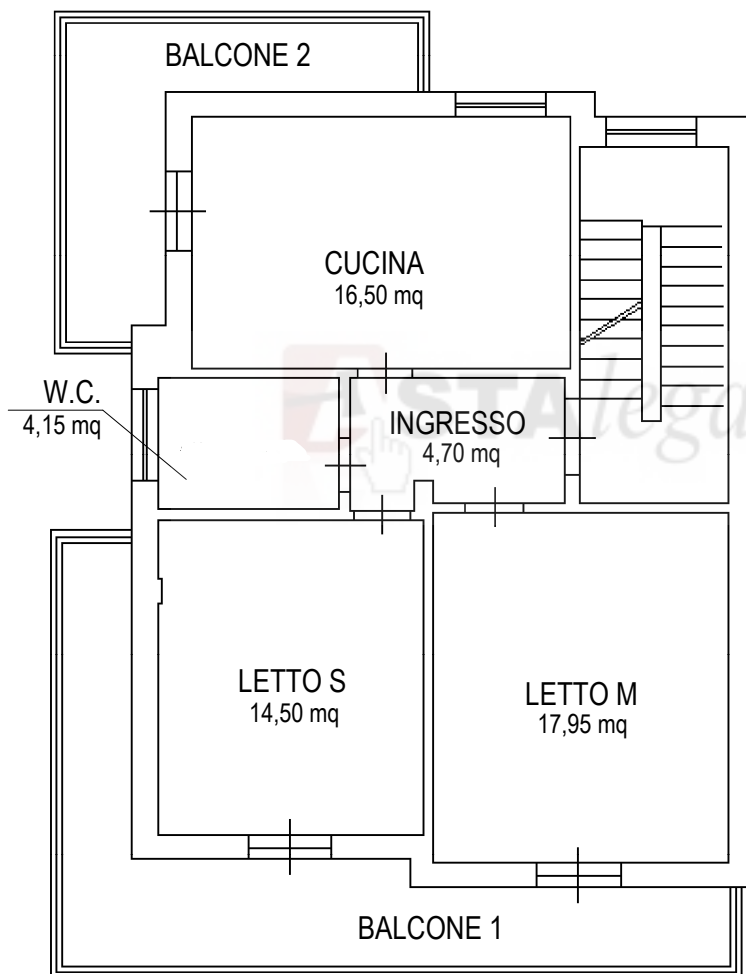


# PIANTA PIANO TERRA



VIA FRIGINTINI GIANFORMA PONTE MARGIONE

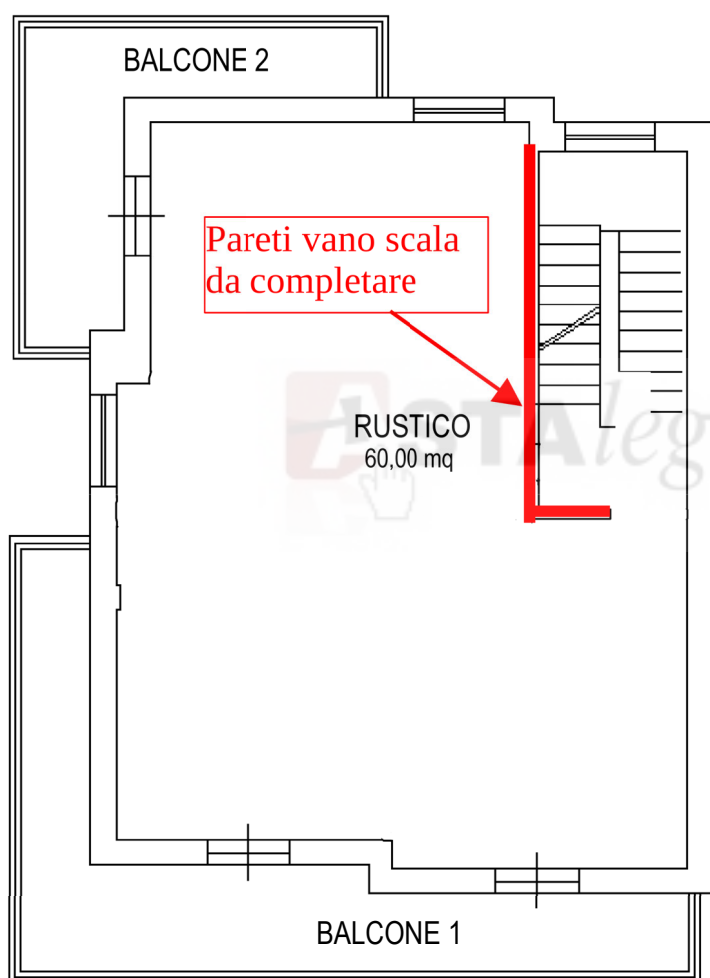
## PIANTA PRIMO PIANO



SUPERFICIE TOTALE BALCONI  
23,00 mq

SUPERFICIE VANO SCALA  
9,00 mq

## PIANTA SECONDO PIANO



SUPERFICIE TOTALE BALCONI  
23,00 m<sup>2</sup>

SUPERFICIE VANO SCALA  
9,00 m<sup>2</sup>

RUSTICO  
60,00 m<sup>2</sup>

Pareti vano scala  
da completare

Astalegale.net