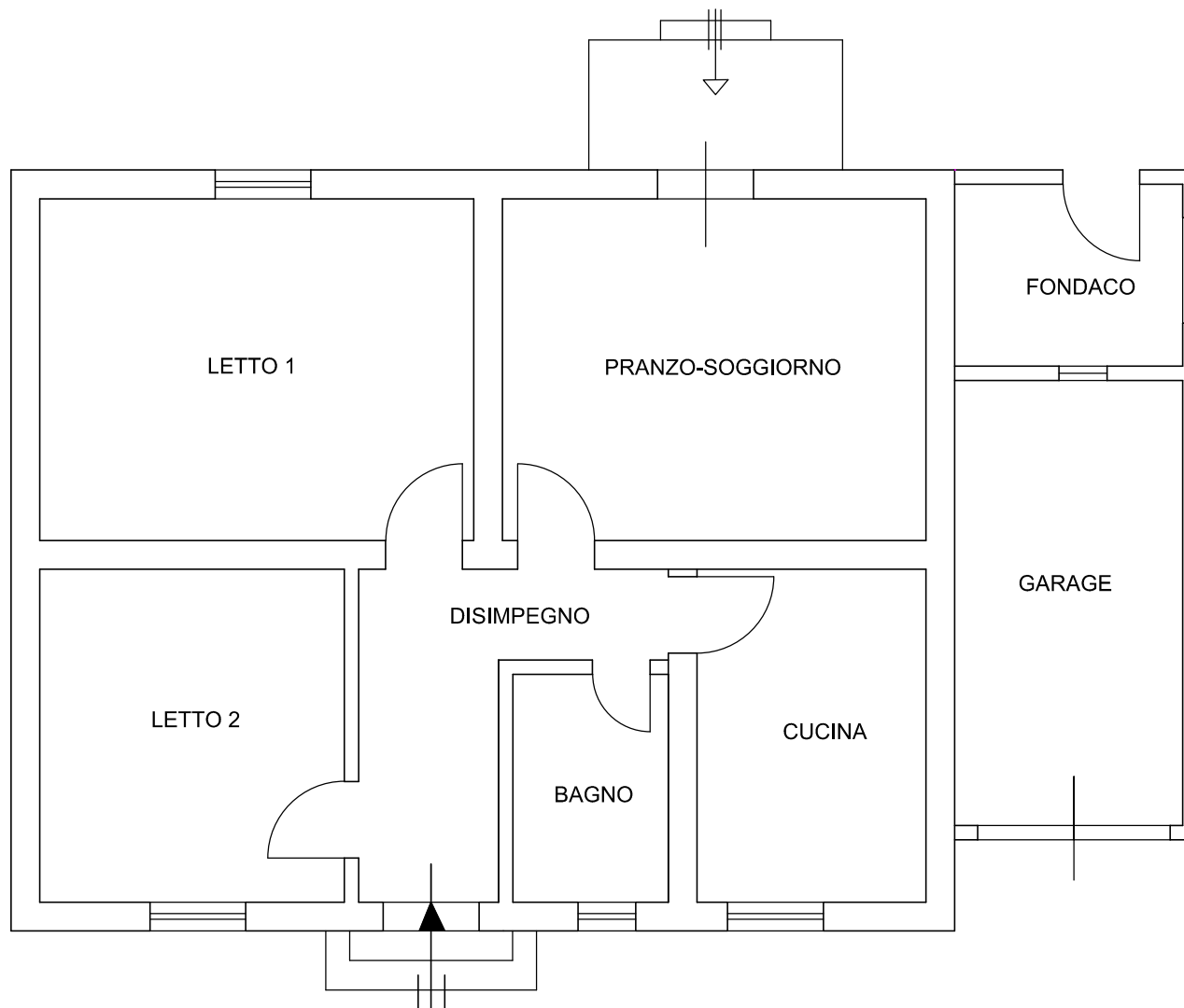
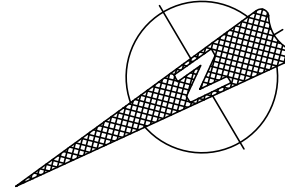


# STATO ATTUALE

PIANO TERRA



Letto 1 = 4,53 x 3,48 = Mq 15,76

Letto 2 = 4,48 x 3,18 = Mq 14,25

Soggiorno = 4,42 x 3,57 = Mq 15,78

Bagno = 1,62 x 2,38 = Mq 3,86

Cucina = 2,39 x 3,48 = Mq 8,32

Dis. = 1,48 x 3,48 + 1,77 x 0,95 = Mq 6,83

Fondaco = 1,90 x 2,48 = Mq 4,71

Garage : 4,70 x 2,48 = Mq 11,65

Mq 64,80 x H 2,97 = Mc 192,46

Mq 16,36 x Hmed. 2,45 = Mc 40,08