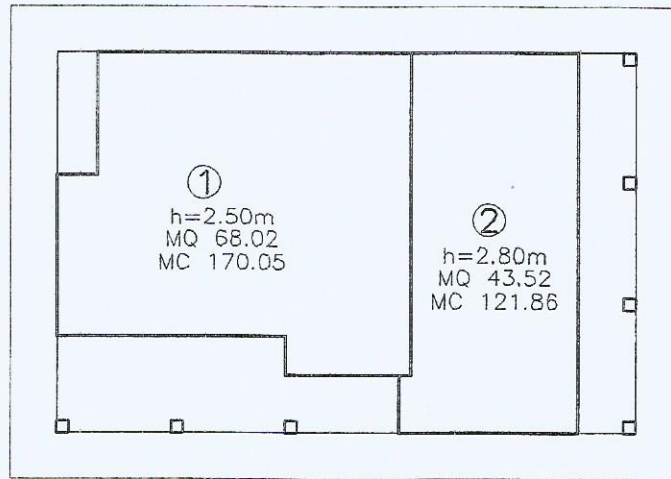
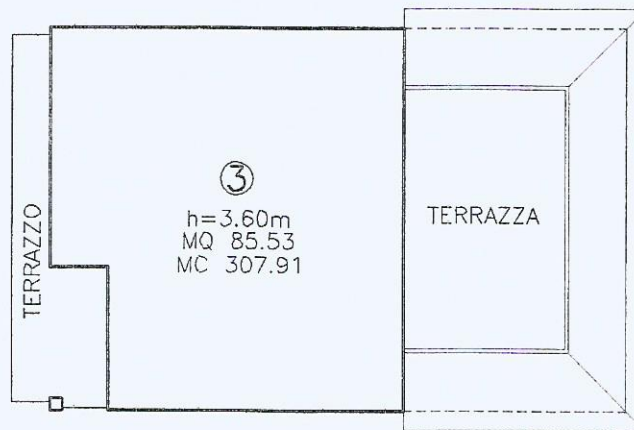


CALCOLO VOLUMETRICO



PIANTA PIANO TERRA



PIANTA PIANO PRIMO

VERIFICA VOLUMETRICA

PIANTA PIANO TERRA

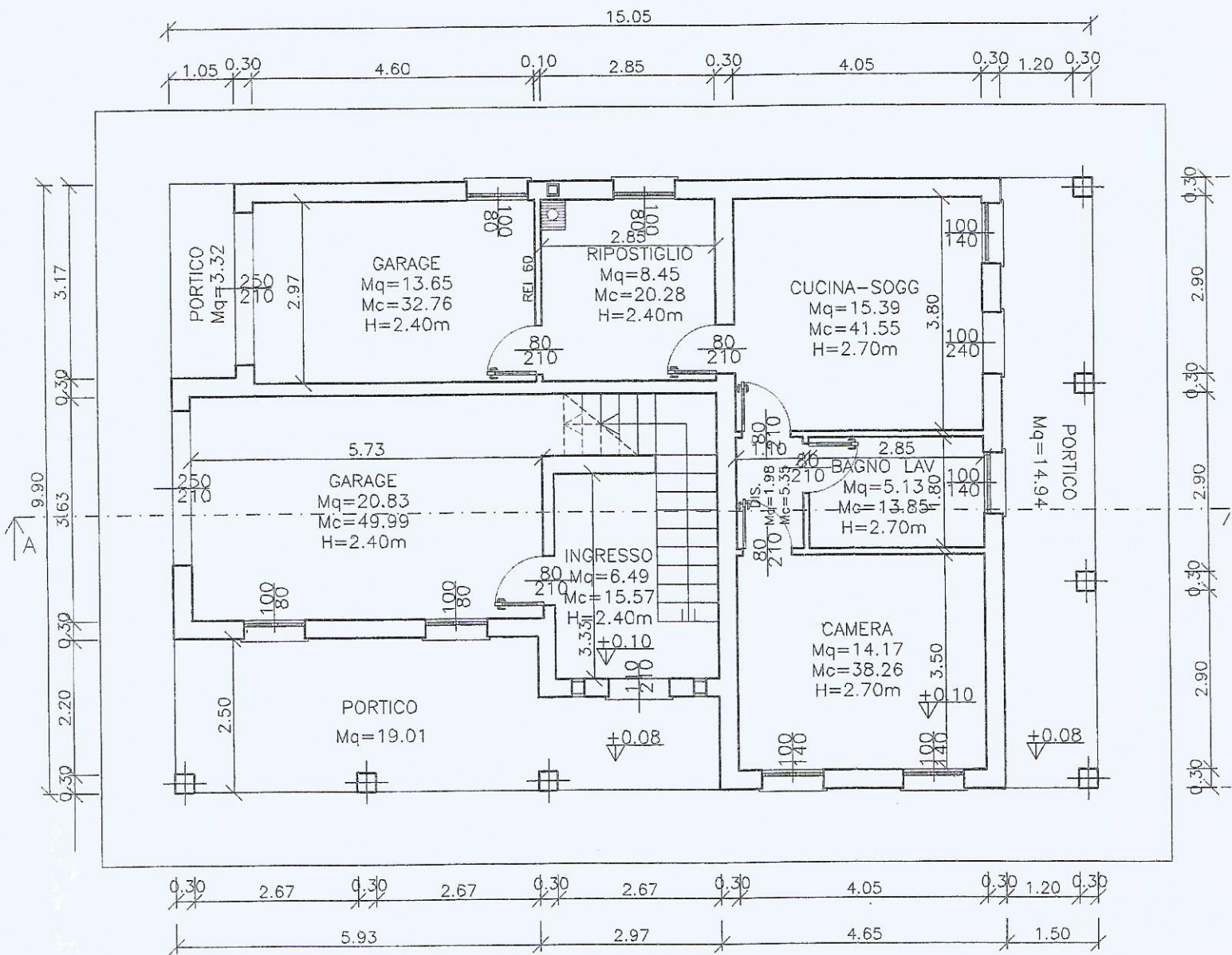
① Servizi	170.05 mc
② Appartamento	121.88 mc

PIANTA PIANO PRIMO

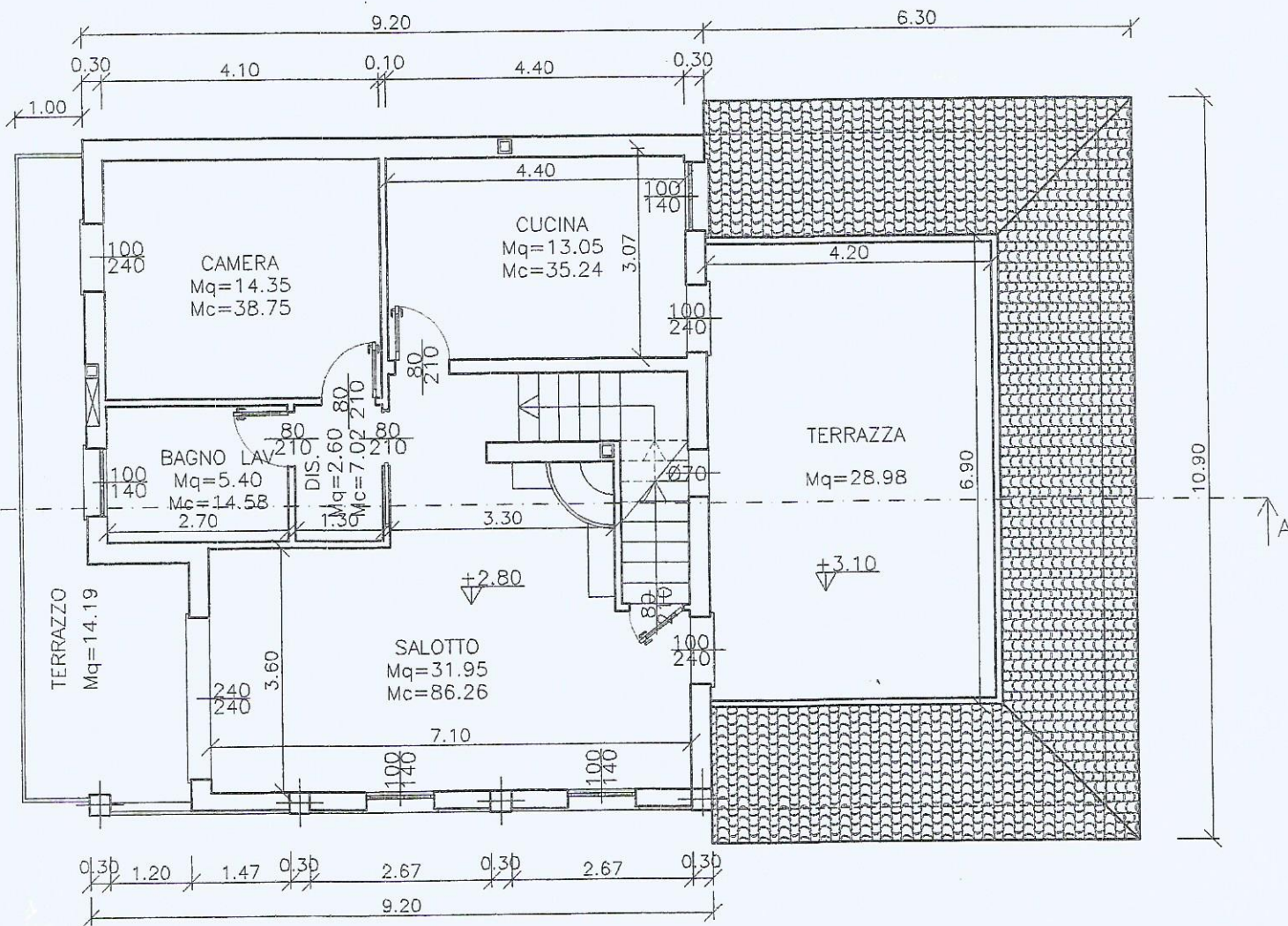
③ Abitazione	307.91 mc
--------------	-----------

VOLUMETRIA IN PROGETTO 599.84 mc

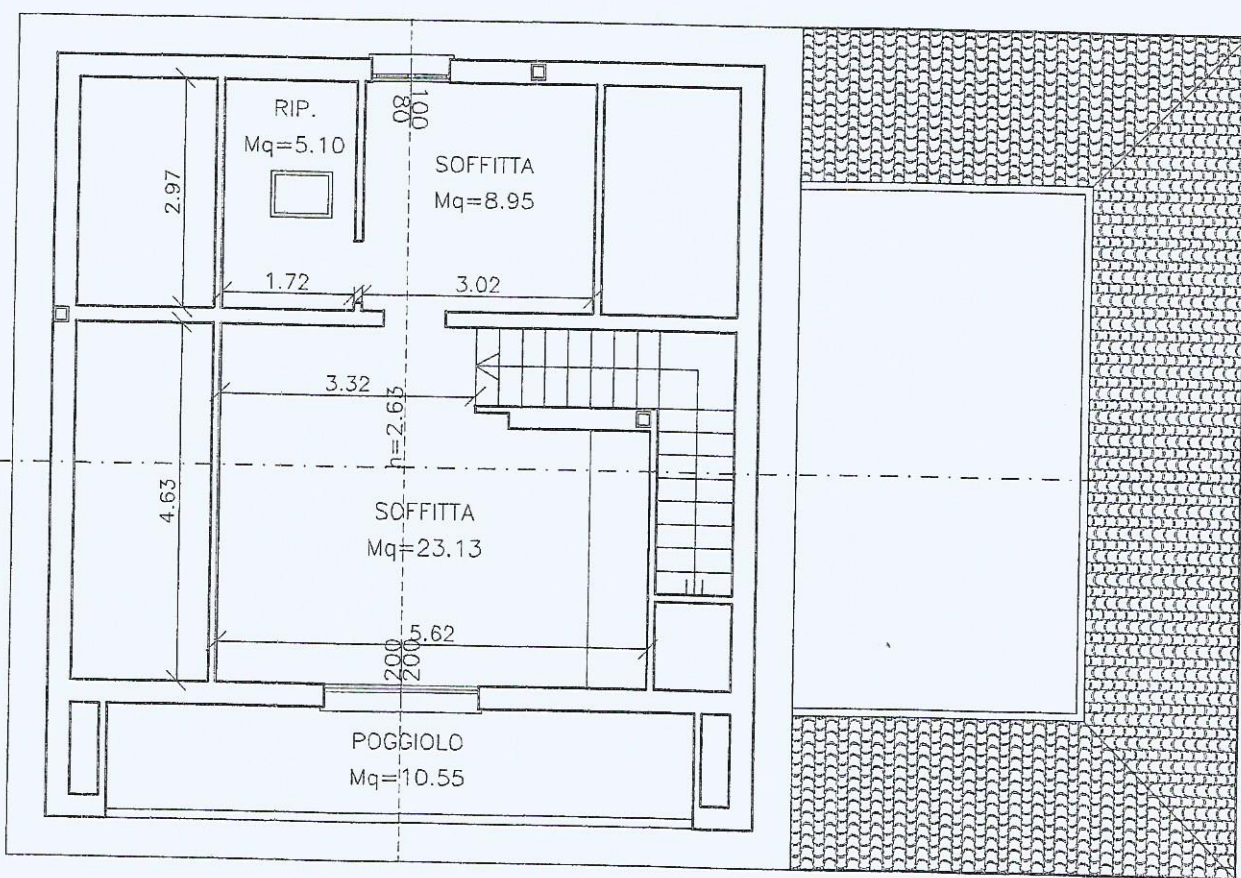
MASSIMA VOLUMETRIA REALIZZABILE 600.00 mc



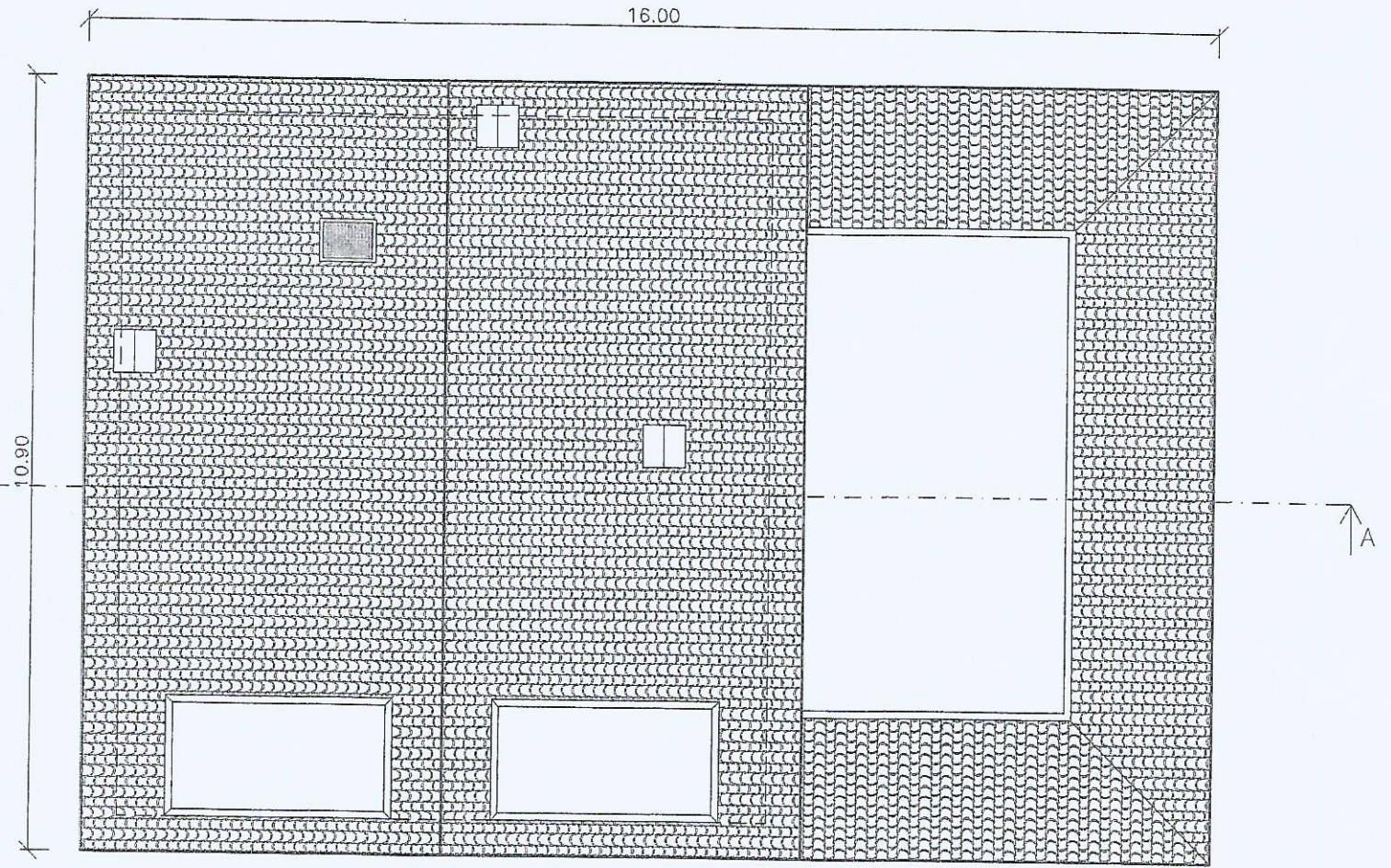
PIANTA PIANO TERRA



PIANTA PIANO PRIMO H=2.70m



PIANTA SOTTOTETTO



PIANTA COPERTURA