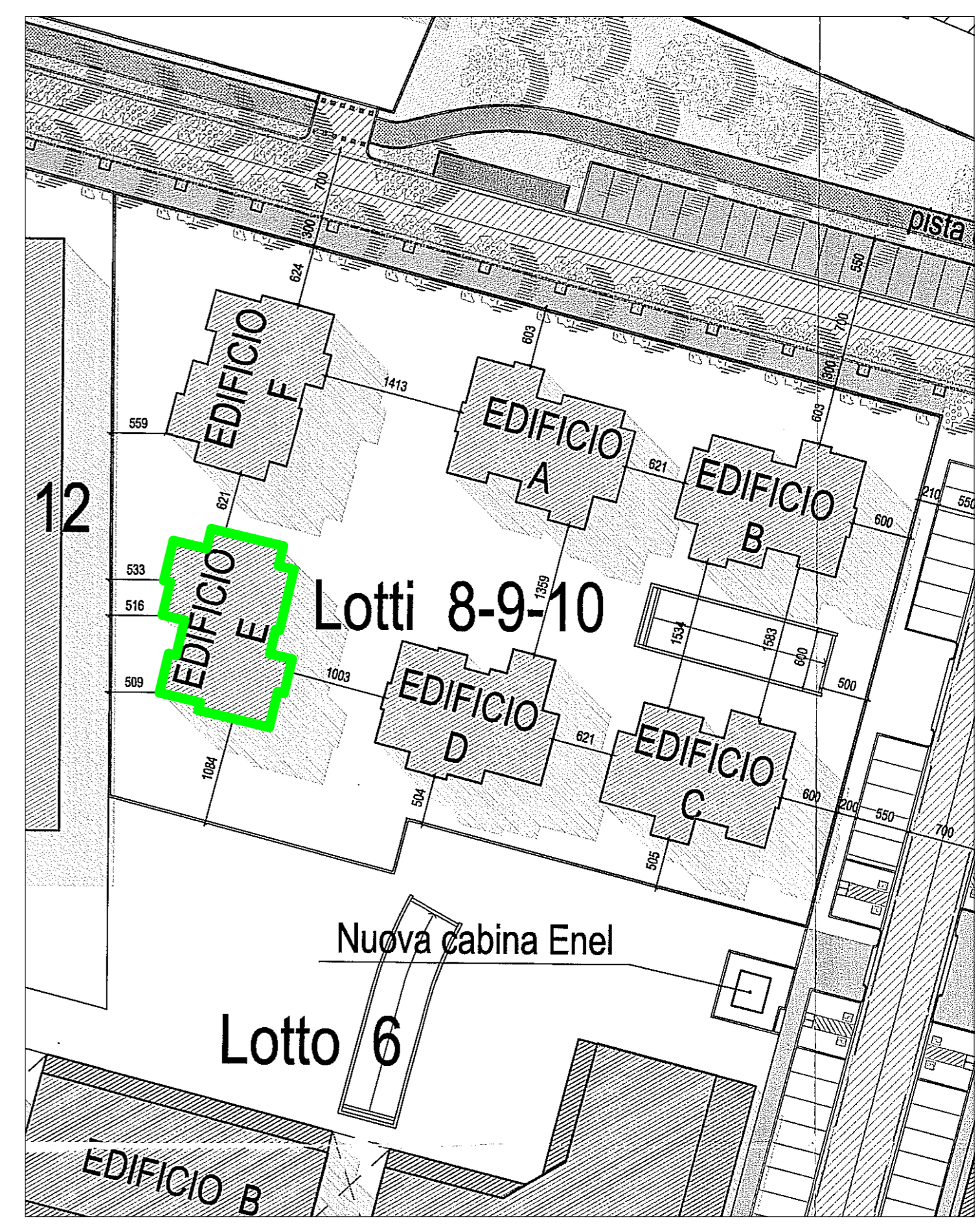


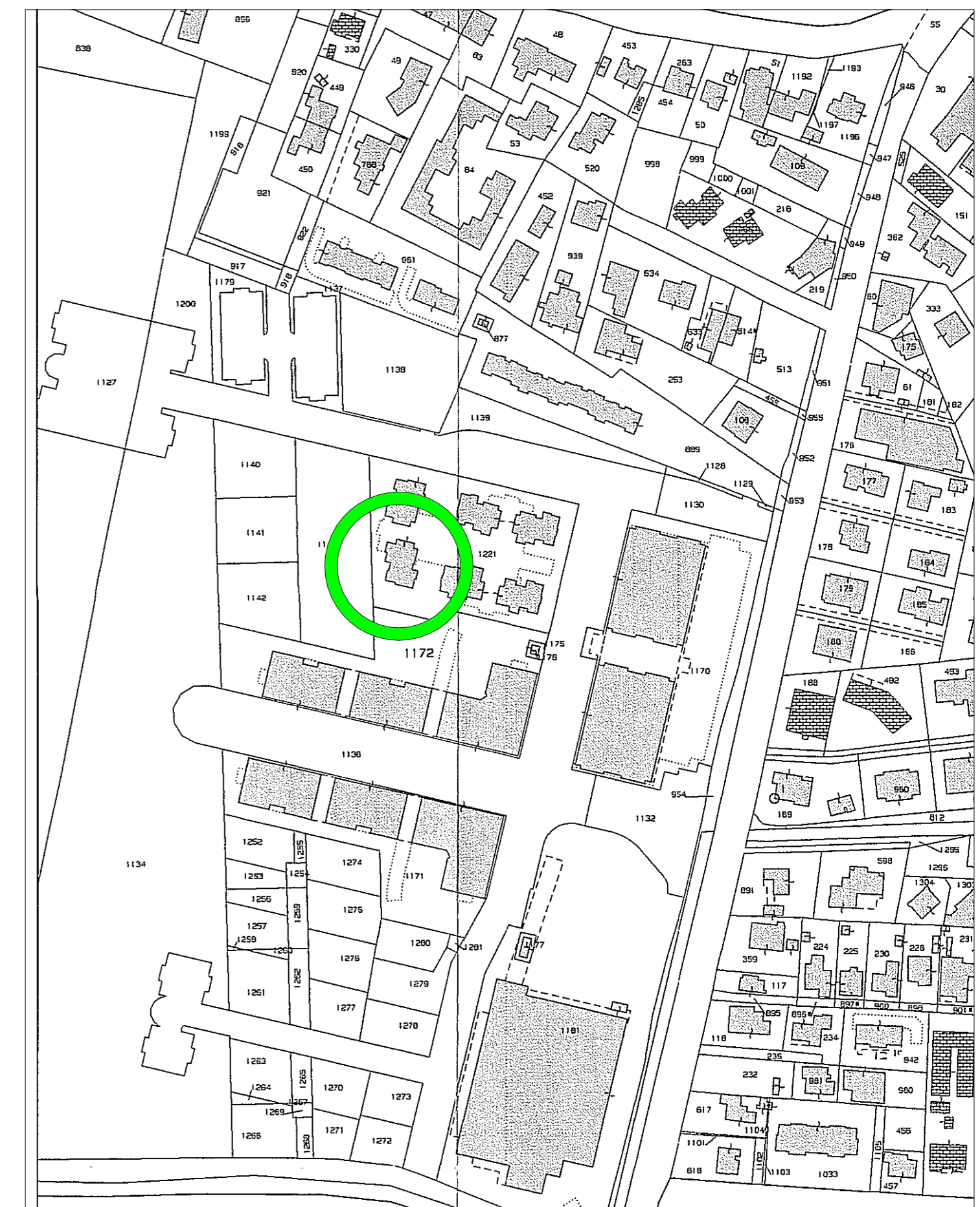
## Calcolo volumi progetto approvato

EDIFICIO A			EDIFICIO B			EDIFICIO C			EDIFICIO D			EDIFICIO E			EDIFICIO F		
Sup. Coperta	17.68 x 14.58	mq 253.11	Sup. Coperta	17.68 x 14.58	mq 253.11	Sup. Coperta	17.68 x 14.28	mq 247.90	Sup. Coperta	17.68 x 14.57	mq 252.80	Sup. Coperta	14.75 x 18.06	mq 266.39	Sup. Coperta	14.15 x 18.06	mq 255.55
- a deltrame	4.05 x 0.52	mq 2.11	- a deltrame	4.05 x 0.52	mq 2.11	- a deltrame	1.80 x 4.97	mq 8.95	- a deltrame	4.05 x 2.15	mq 8.71	- a deltrame	3.50 x 1.99	mq 6.97	- a deltrame	8.58 x 0.70	mq 6.01
	4.29 x 2.92	mq 12.53		2.56 x 2.92	mq 7.48		6.18 x 1.47	mq 8.98		3.09 x 1.85	mq 5.72		3.84 x 1.99	mq 7.64		0.80 x 4.03	mq 3.22
	4.73 x 1.92	mq 9.08		6.46 x 1.92	mq 12.40		2.59 x 2.92	mq 7.48		2.96 x 3.16	mq 9.36		2.09 x 5.99	mq 12.52		1.80 x 2.56	mq 4.61
	1.52 x 3.67	mq 5.58		1.52 x 3.67	mq 5.58		0.32 x 4.81	mq 1.54		2.56 x 3.16	mq 8.09		2.40 x 4.26	mq 10.20		1.49 x 5.99	mq 8.93
	0.32 x 2.21	mq 0.66		0.32 x 4.81	mq 1.54		0.32 x 4.26	mq 1.36		1.73 x 2.56	mq 4.43		0.50 x 4.03	mq 2.02		3.50 x 1.99	mq 6.97
	4.10 x 1.96	mq 8.04		0.32 x 4.26	mq 1.36		5.84 x 1.90	mq 11.10		1.80 x 5.25	mq 9.45		9.48 x 0.70	mq 6.63		0.75 x 3.57	mq 2.68
	3.44 x 3.06	mq 10.53		4.42 x 1.96	mq 8.66		3.44 x 2.76	mq 9.49		0.32 x 3.48	mq 1.11		2.65 x 4.10	mq 10.87		2.25 x 3.44	mq 7.74
	3.57 x 0.90	mq 3.21		3.57 x 0.90	mq 3.21		4.42 x 1.66	mq 7.34		4.01 x 1.71	mq 6.86		3.15 x 3.44	mq 10.84		1.15 x 4.10	mq 4.72
	2.40 x 3.50	mq 8.40		2.40 x 3.50	mq 8.40		1.80 x 1.91	mq 3.42		5.84 x 1.91	mq 11.15		0.70 x 3.57	mq 2.49			
Volume	193.14 x h2.70	mc 521.48	Volume	196.50 x h3.00	mc 589.50	Volume	194.02 x h3.00	mc 582.06	Volume	198.69 x h3.00	mc 596.07	Volume	199.53 x h3.00	mc 598.59	Volume	203.69 x h3.00	mc 611.07
VOLUME MAX	(521.48 + 589.50 + 589.50)	MC 1700.48	VOLUME MAX	(521.48 + 589.50 + 589.50)	MC 1700.48	VOLUME MAX	(512.68 + 582.06 + 582.06)	MC 1676.80	VOLUME MAX	(533.66 + 596.07 + 596.07)	MC 1725.80	VOLUME MAX	(598.59 + 605.61 + 545.05)	MC 1749.25	VOLUME MAX	(611.07 + 618.48 + 556.63)	MC 1786.18



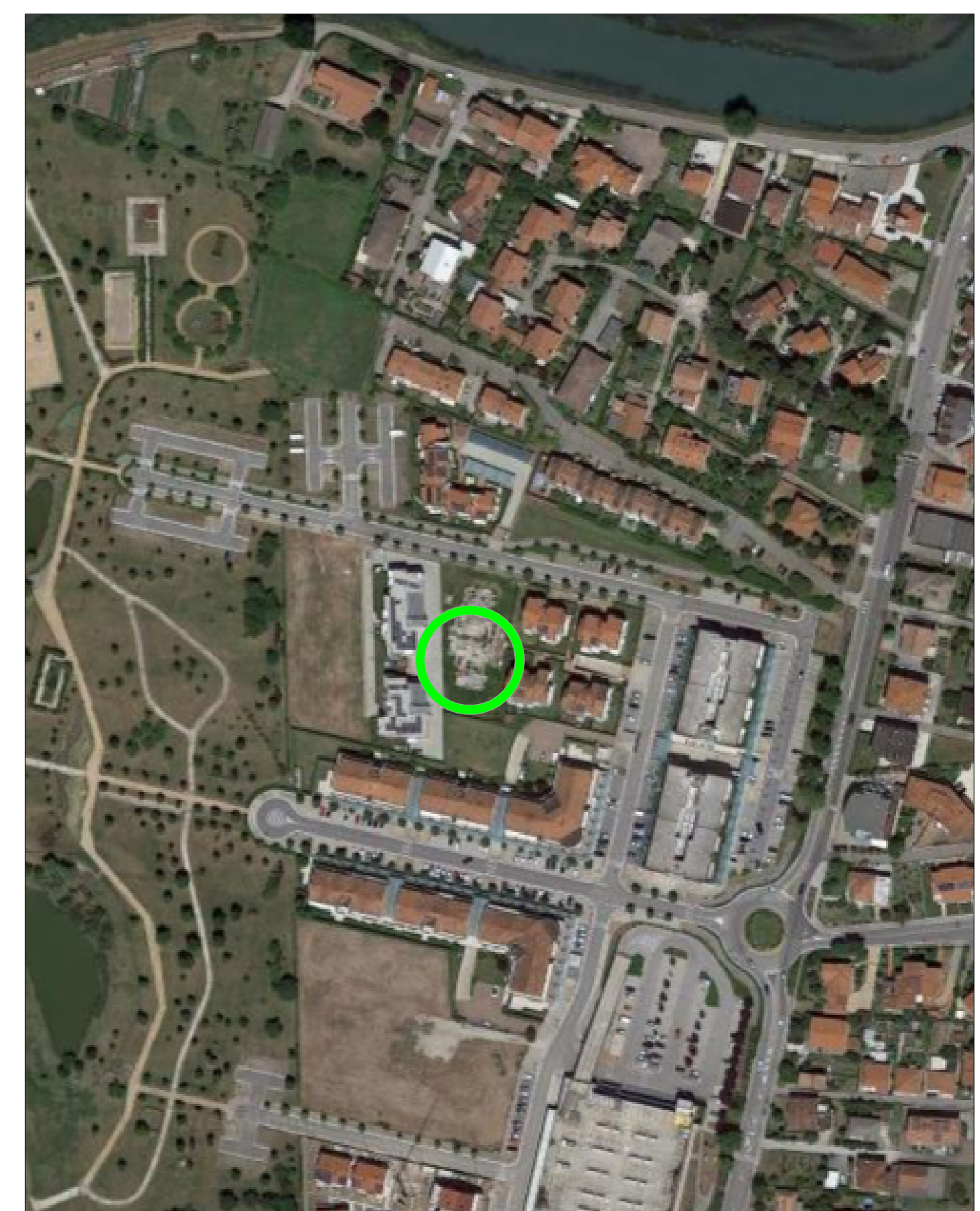
Lotto 6

1:500



Mappa

1:500



Fotopiano

1:2000

DATI TECNICI COME DA P.di L. AUTORIZZATO CON DELIBERA DEL CONSIGLIO COMUNALE N. 13 DEL 08 FEBBRAIO 2007

Lotti	SUPERFICIE FONDIARIA	COMMERCIALE			RESIDENZIALE		
		N.PIANI	H	VOLUME	N.PIANI	H	VOLUME
08-09-10	mq 4041.72				3	8.70	mc 11000.00
	MQ 4041.72						MC 11000.00

DATI TECNICI DI PROGETTO

VOLUME MAX EDIFICABILE (come da Variante PdL Autorizzata) MC 11000.00

VOLUME MAXIN PROGETTO

EDIFICIO A MC 1700.48  
EDIFICIO B MC 1700.48  
EDIFICIO C MC 1676.80  
EDIFICIO D MC 1725.80  
EDIFICIO E MC 1749.25  
EDIFICIO F MC 1786.18

TOTALE MC 10338.99

SUPERFICIE RESIDENZIALE

SUPERFICIE A PARCHEGIO

- 1mq/10mc ai sensi della L. 122/89  
- volume lordo in progetto 10338.99 x 1/10 = mq 1033.90

In Progetto

- Box Auto mq 777.32  
- Spazio di Manovra mq 575.40  
- Rampa mq 111.60

MQ 1464.32 > MQ 1033.90

MC 10338.99 < MC 11000.00