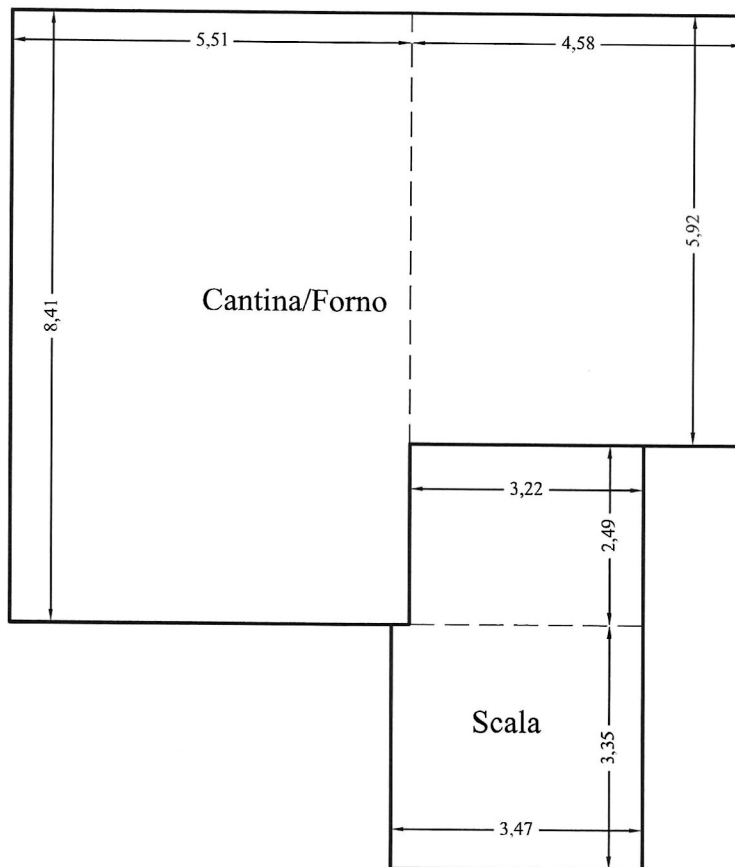


# Sagoma Piano Seminterrato



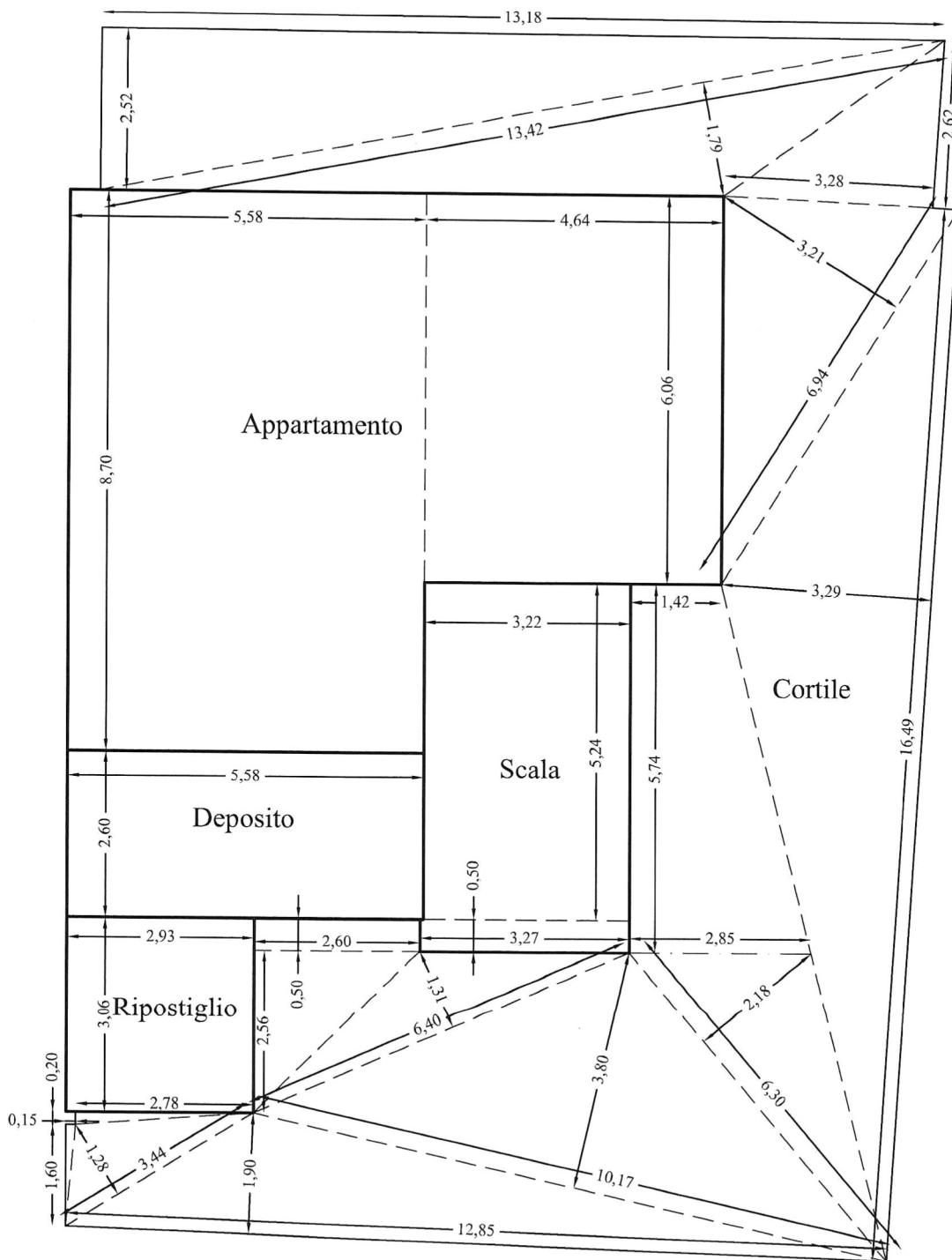
Cantina / Forno						
ml.	8,41	x	5,51	=	mq.	46.34
ml.	5,92	x	4,58	=	mq.	27.11
Totale				=	mq.	73.45

Scala						
ml.	3,22	x	2,49	=	mq.	8.02
ml.	3,47	x	3,35	=	mq.	11.62
				=	mq.	19.64



Scala 1: 100

# Sagoma Piano Terra



Scala 1: 100

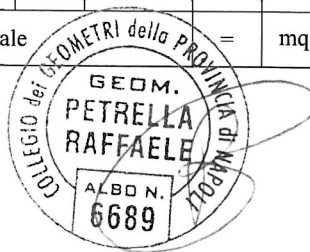
Appartameto						
ml.	8,70	x	5,58	=	mq.	48,55
ml.	6,06	x	4,64	=	mq.	28,12
Totale				=	mq.	76,66

Scala						
ml.	5,24	x	3,22	=	mq.	16,87
ml.	3,27	x	0,50	=	mq.	1,64
Totale				=	mq.	18,51

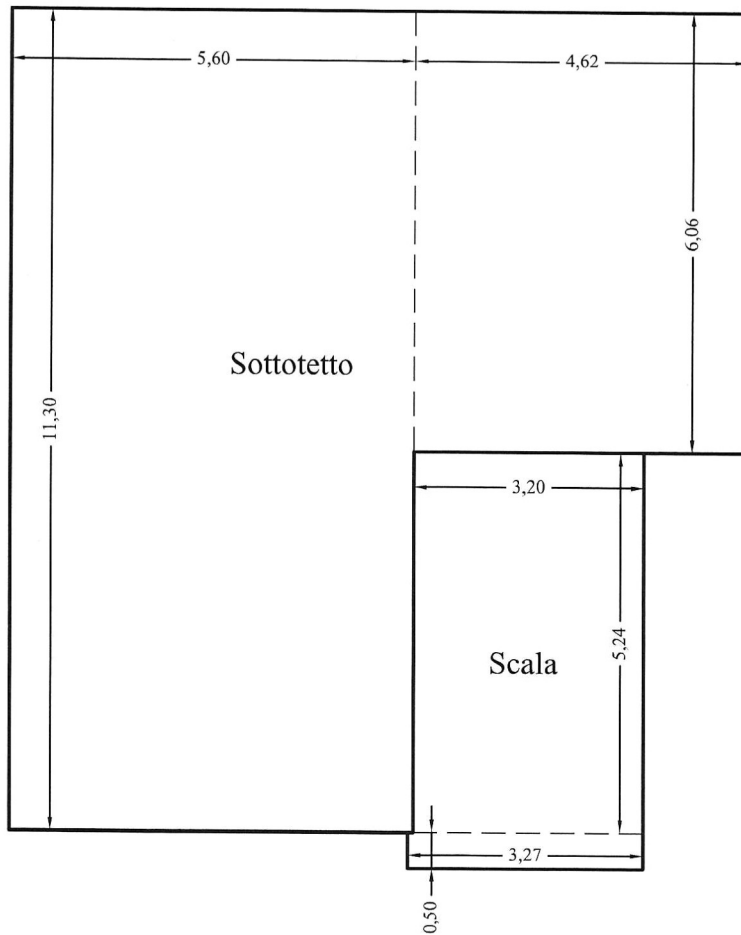
Deposito						
ml.	5,58	x	2,60	=	mq.	14,51

Ripostiglio						
ml.	3,06	x	2,93	=	mq.	8,97

Cortile						
ml.	13,18	x	2,52/2	=	mq.	16,61
ml.	13,42	x	1,79/2	=	mq.	12,01
ml.	2,62	x	3,28/2	=	mq.	4,30
ml.	6,94	x	3,21/2	=	mq.	11,14
ml.	16,49	x	3,29/2	=	mq.	27,13
ml.	2.85+1.42	x	5,74/2	=	mq.	12,25
ml.	6,30	x	2,18/2	=	mq.	6,87
ml.	10,17	x	3,80/2	=	mq.	19,32
ml.	12,85	x	1,90/2	=	mq.	12,21
ml.	2,60	x	0,50	=	mq.	1,30
ml.	2,60	x	2,56/2	=	mq.	3,33
ml.	3,44	x	1,28/2	=	mq.	2,20
ml.	6,40	x	1,31/2	=	mq.	4,19
ml.	2,78	x	0,20/2	=	mq.	0,28
ml.	1,60	x	0,15/2	=	mq.	0,12
Totale				=	mq.	133,25



# Sagoma Piano Primo



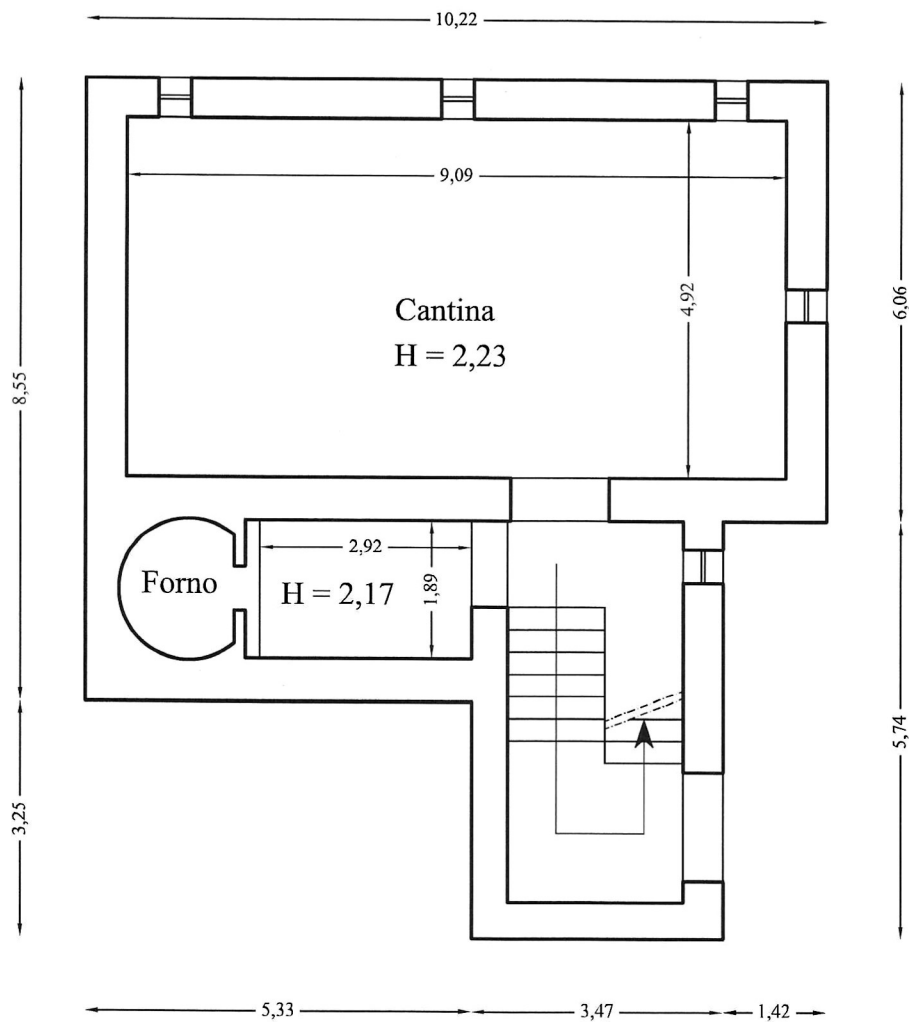
Sottotetto						
ml.	11,30	x	5,60	=	mq.	63,28
ml.	6,06	x	4,62	=	mq.	28,00
Totale				=	mq.	91,28

Scala						
ml.	5,24	x	3,20	=	mq.	16,77
ml.	3,27	x	0,50	=	mq.	1,64
Totale				=	mq.	18,40

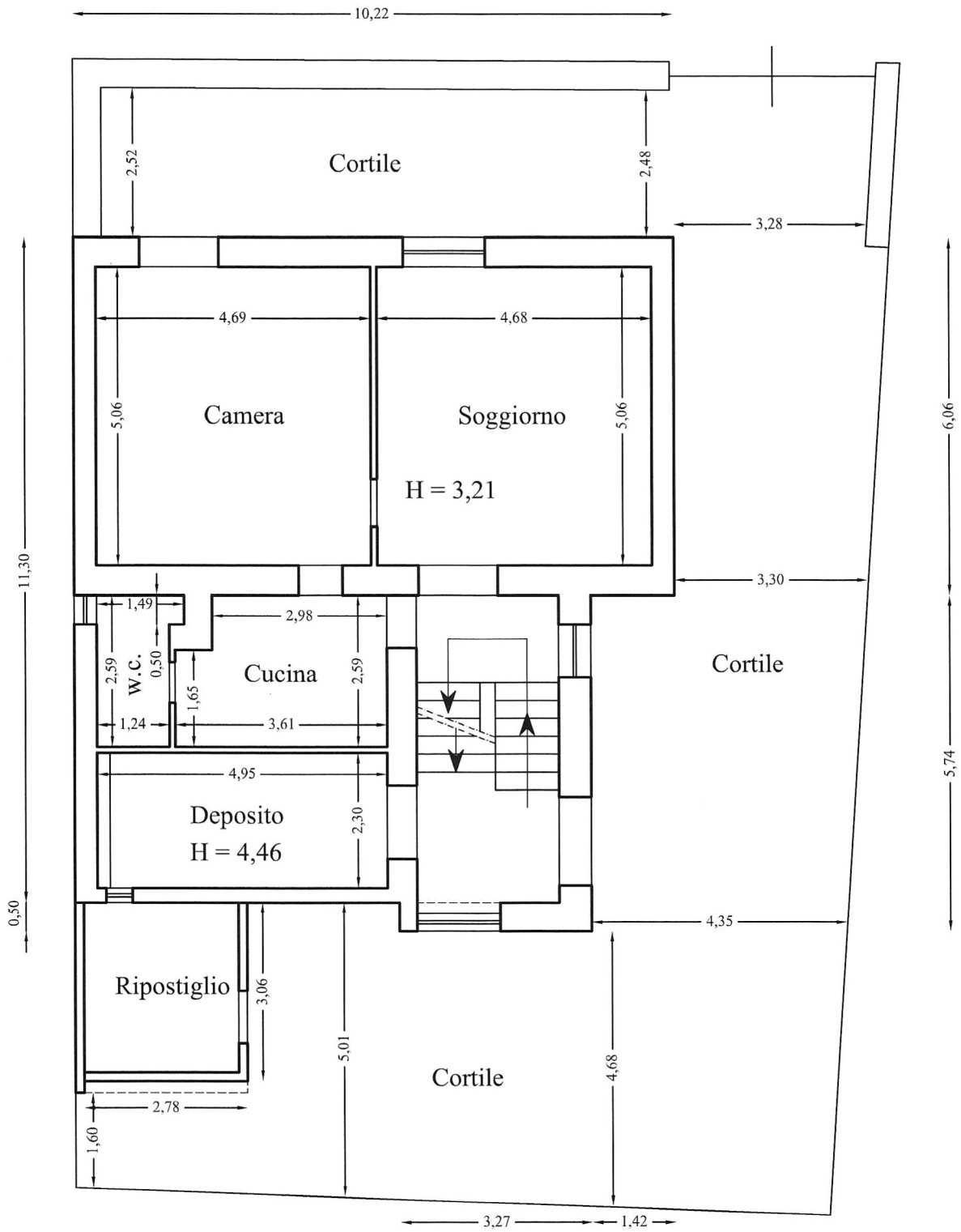


Scala 1: 100

# Piano Seminterrato



# Piano Terra



# Piano Primo

