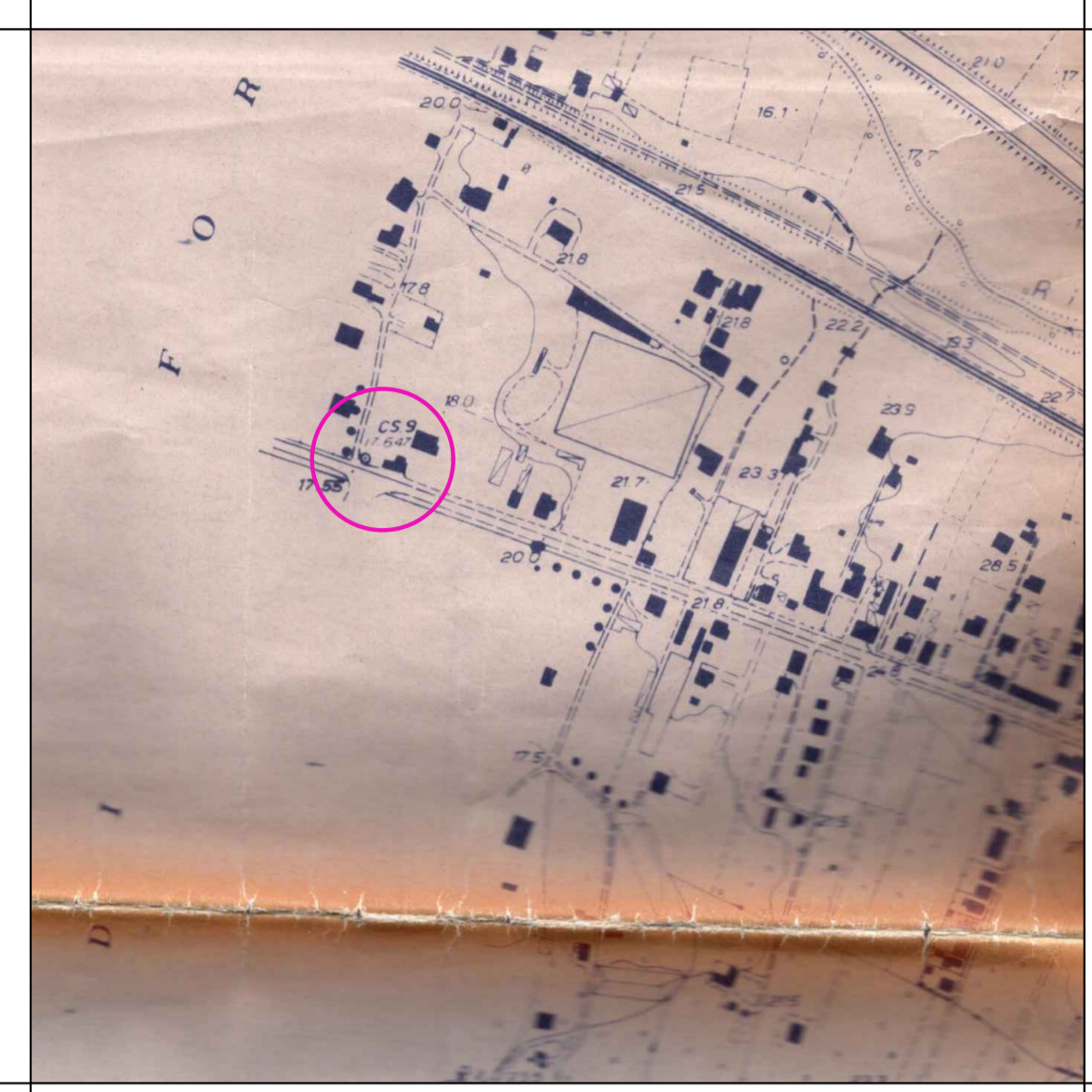


Progetto :
SEGNALAZIONE CERTIFICATA DI INIZIO ATTIVITA' - S.C.I.A. -
PERDITA DI QUALIFICA DI RURALITA' DI VECCHIO FABBRICATO
D.L. 557/1993 ART. 9, comma 3 e 3 bis.

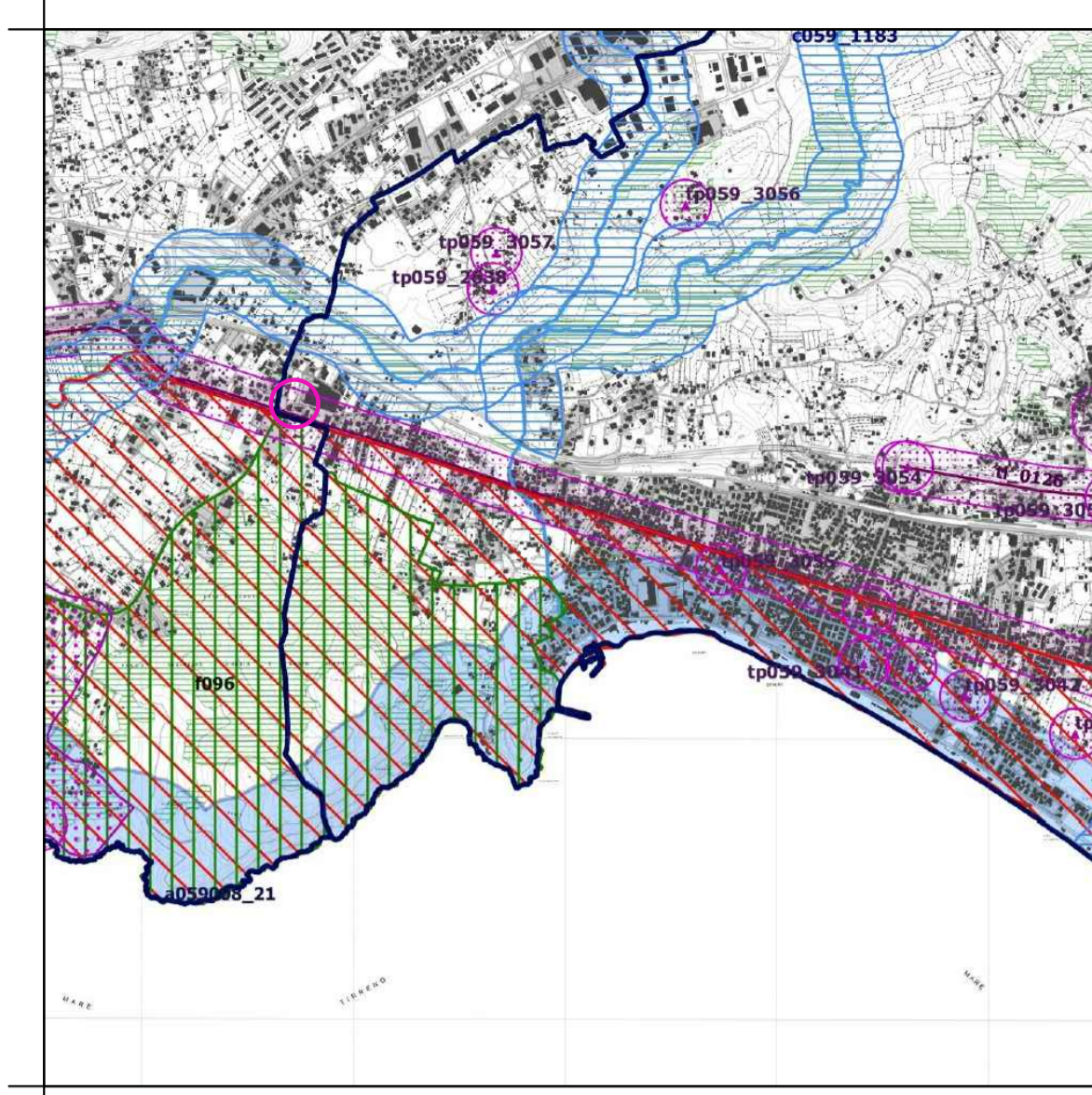
Comune : **MINTURNO** Località : **SCAURI - VIA APPIA n° 3**

COORDINATA I.G.M.	1:25000	Ditto proprietaria :	
COROGRAFIA	1:5000		FILOSA ASSUNTA
STRALCIO P.R.G.	1:5000		
STRALCIO P.T.P.R.	1:25000		
STRALCIO VNC. P.A.I.	1:25000		
STRALCIO VNC. IDROG.	1:10000		
STRALCIO CATASTALE	1:2000	Il progettista :	
PLANIMETRIA UBICATIVA	1:200	Il committente :	
PIANTE	1:100		
PROSPETTI	1:100		
SEZIONI	1:100		

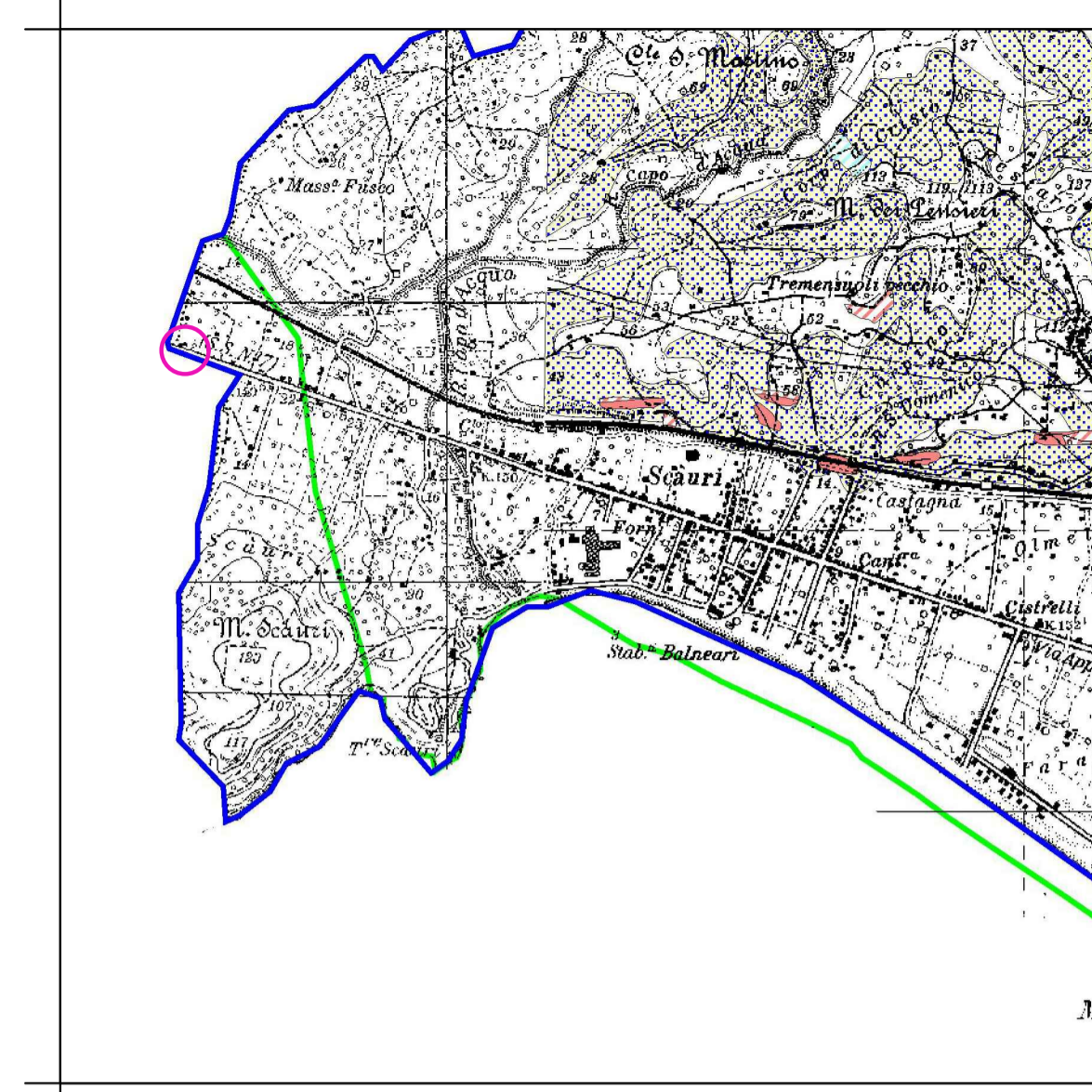
DATA:



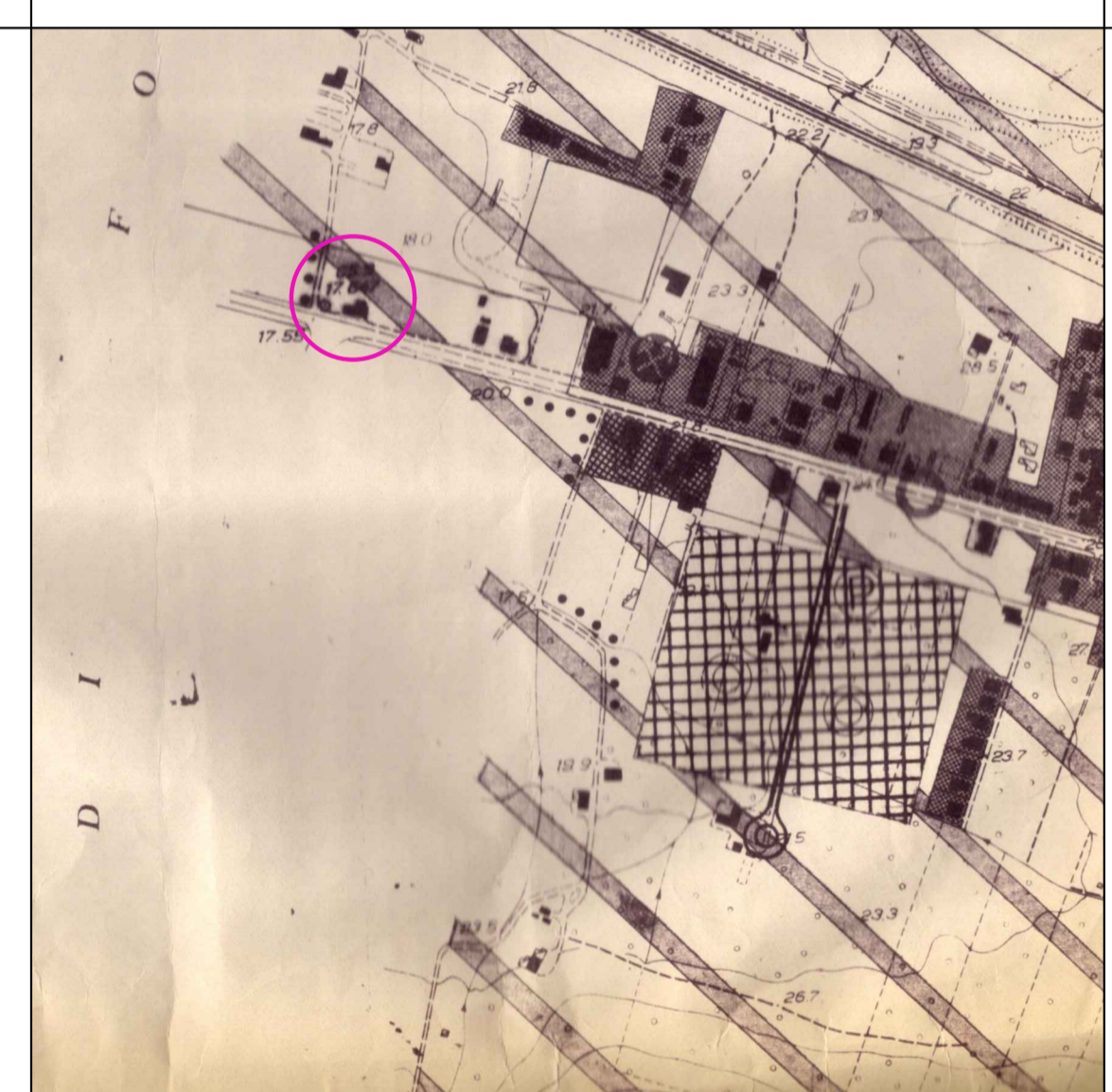
C.T.R. Scala 1:5.000



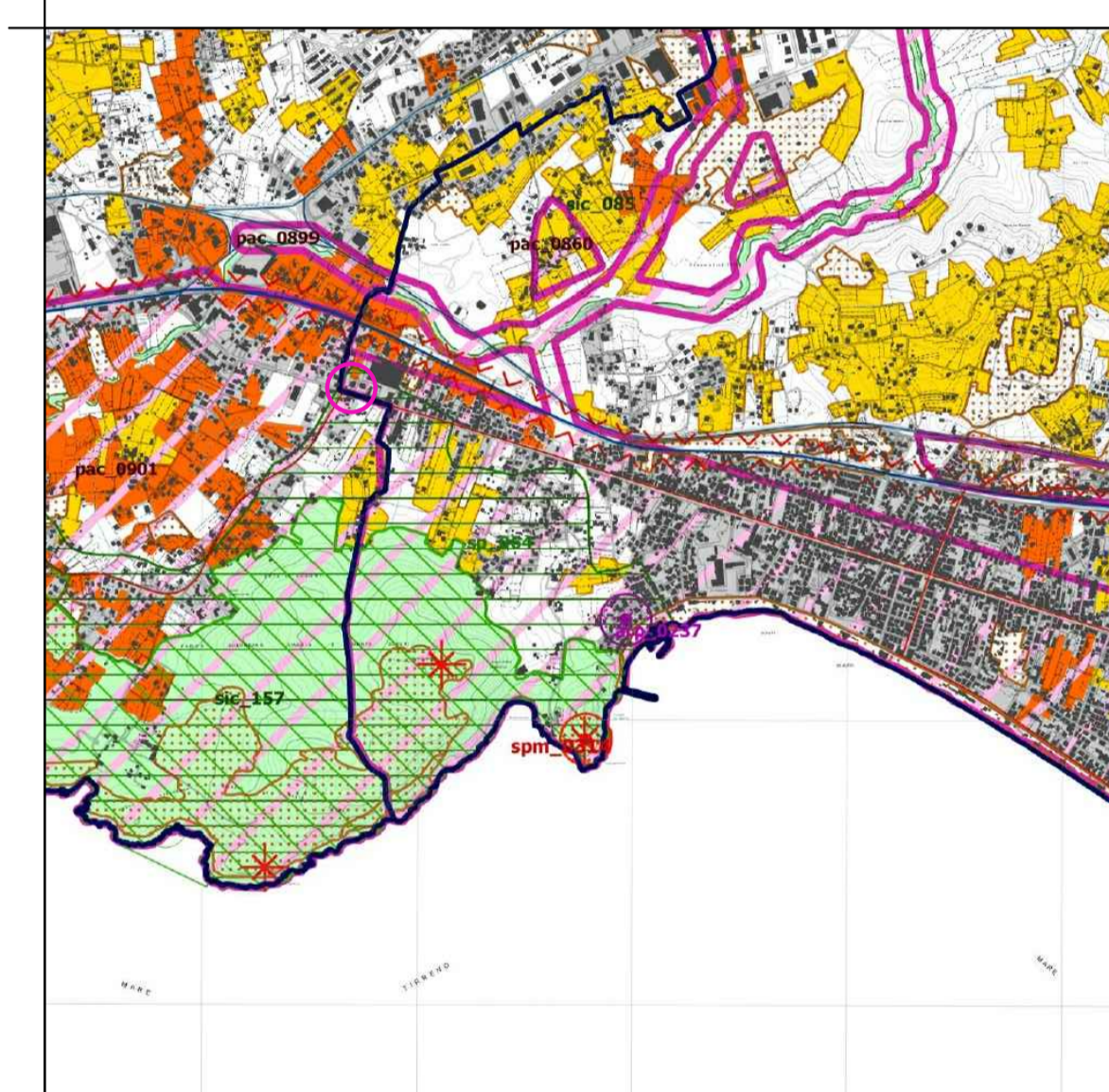
Stralcio P.T.P.R. Tav. B/42, foglio 416. Scala 1:25.000



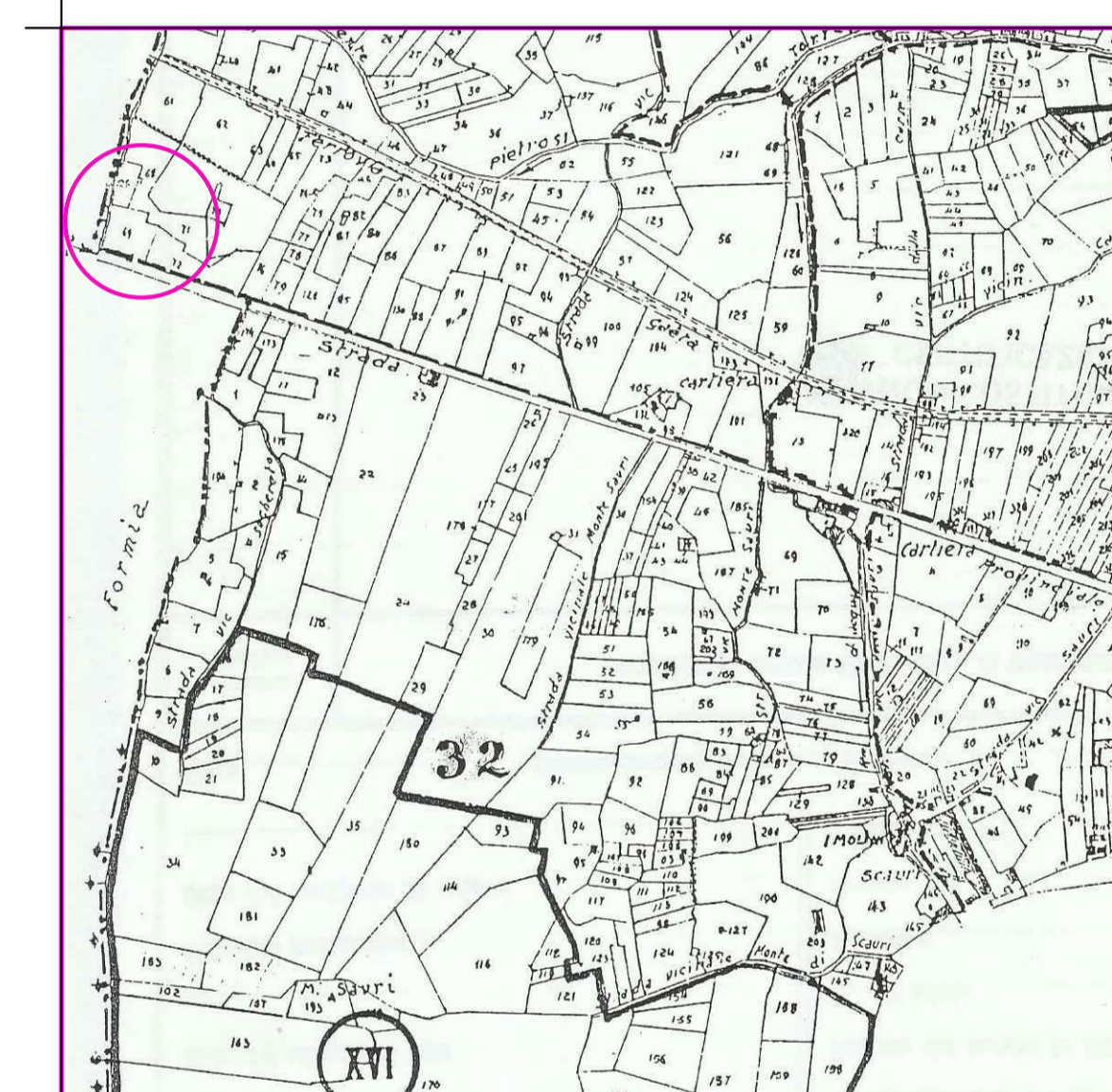
Stralcio Vincolo P.A.I. Area non sottoposta a Vincolo P.A.I. Scala 1:25.000



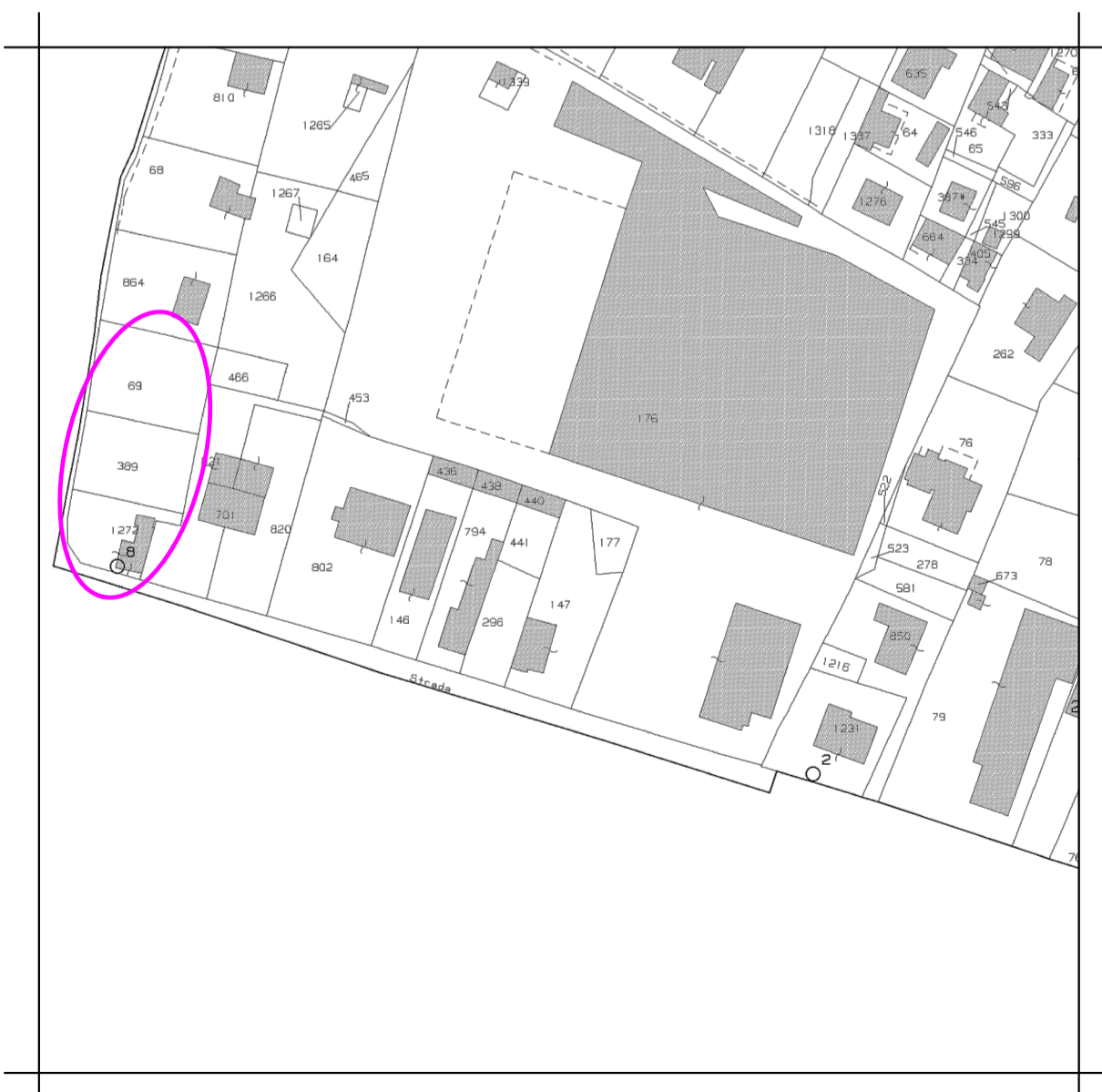
Stralcio P.R.G. Zona agricola semplice E/1 Scala 1:5.000



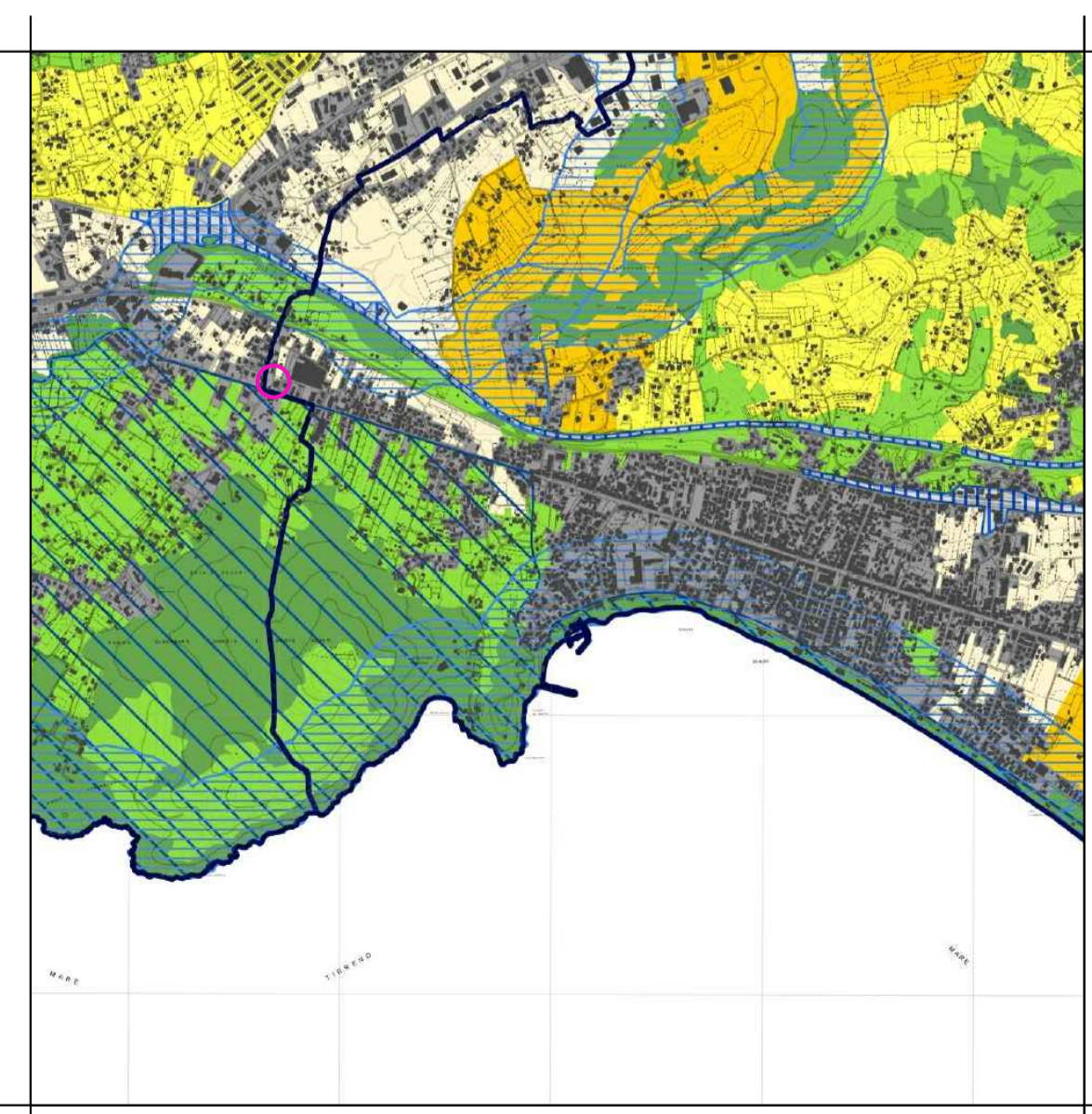
Stralcio P.T.P.R. Tav. C/42, foglio 416. Scala 1:25.000



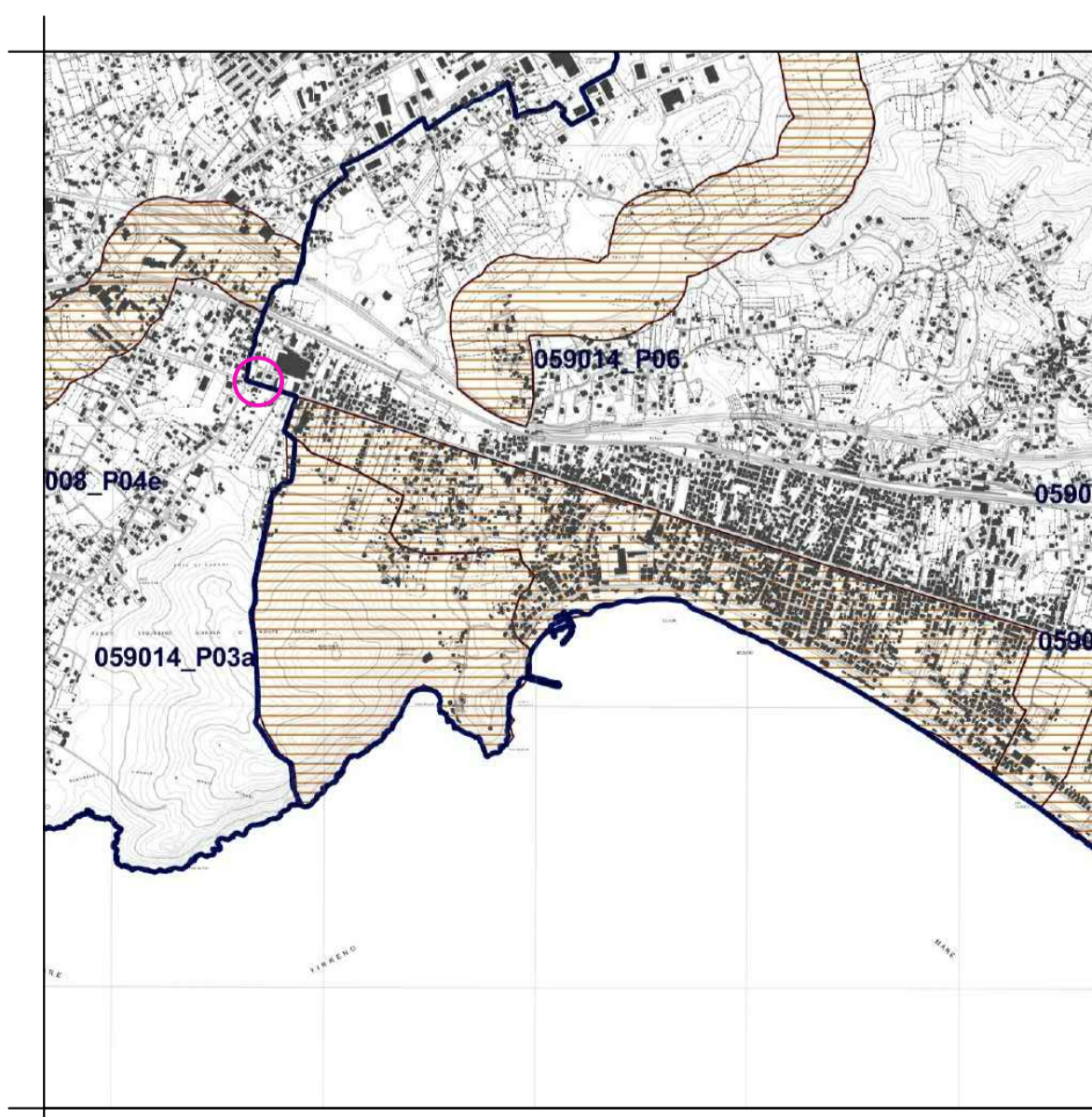
Stralcio vincolo idrogeologico Scala 1:10.000



Stralcio catastale Foglio 24, Particella 1272 (ex 185), 389 e 69 Scala 1:2.000



Stralcio P.T.P.R. Tav. A/42, foglio 416. Scala 1:25.000



Stralcio P.T.P.R. Tav. D/42, foglio 416. Scala 1:25.000

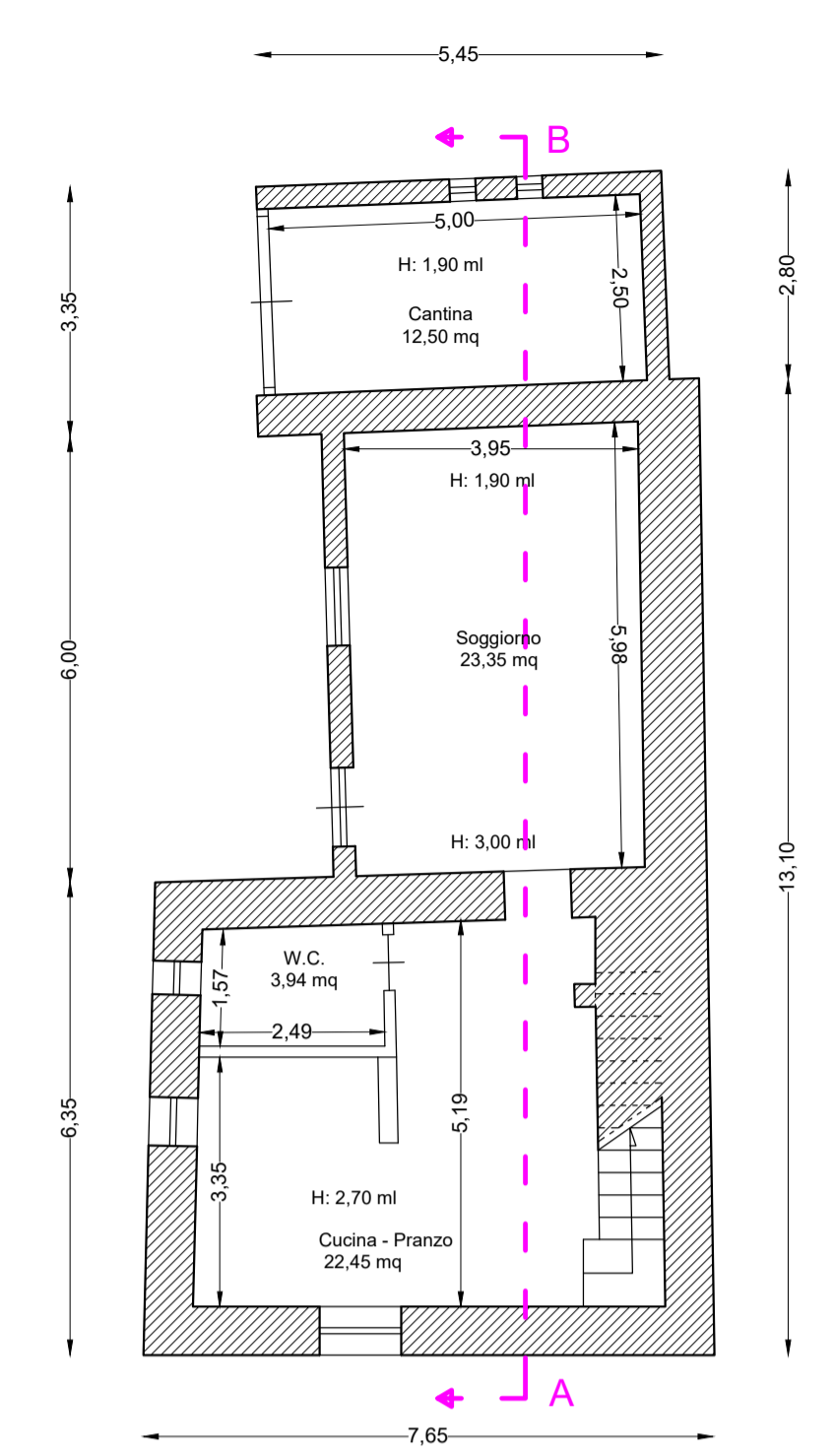


Foto I.G.M. 1954

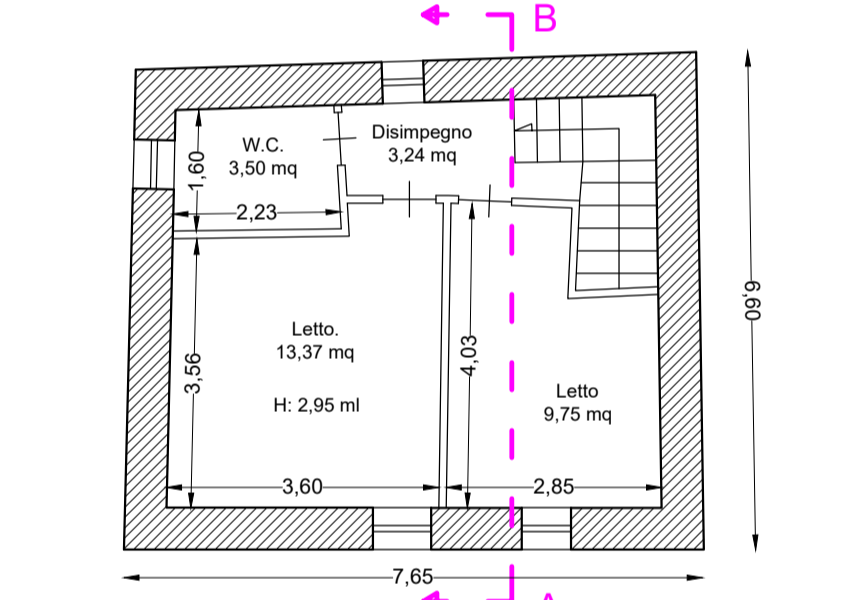


PLANIMETRIA UBICATIVA scala 1:200

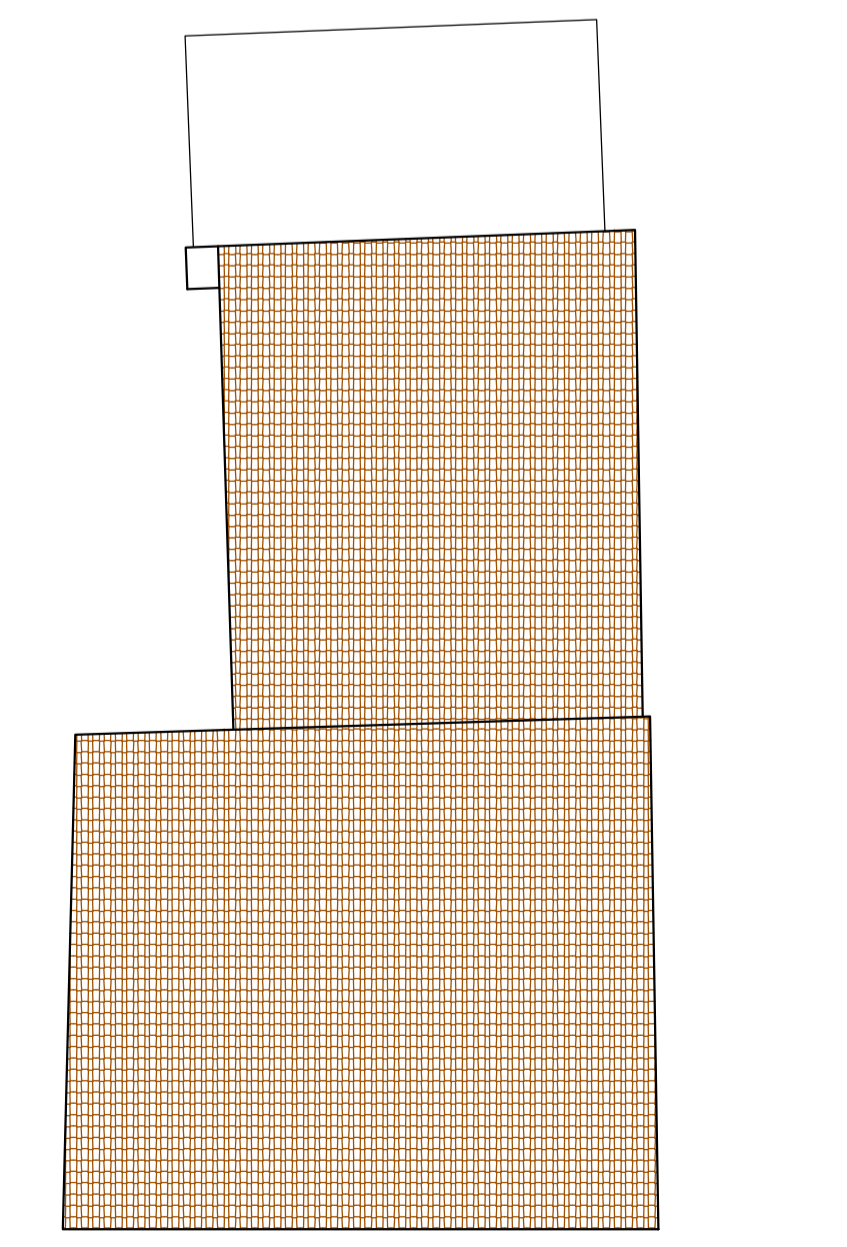
SCHEMA CALCOLO DELLE SUPERFICI E DEI VOLUMI
 Sup. utile mq. 84.24
 Sup. non residenziale = 12.50 mc
 Volume = 337.00 mc



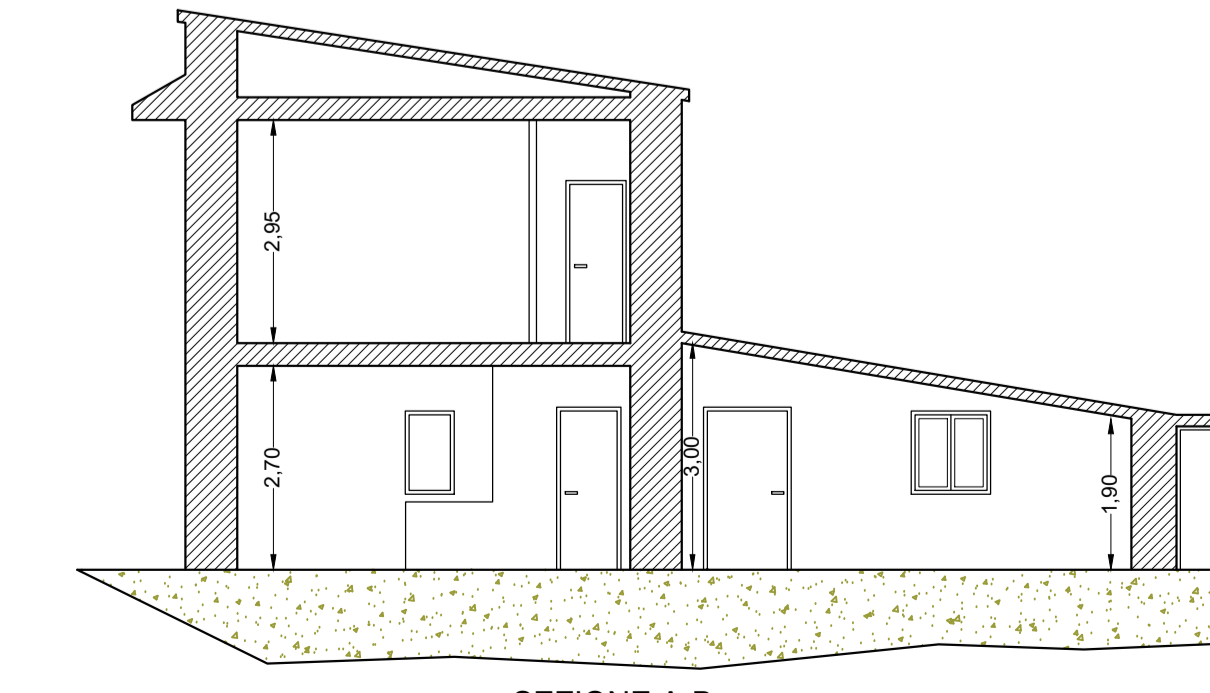
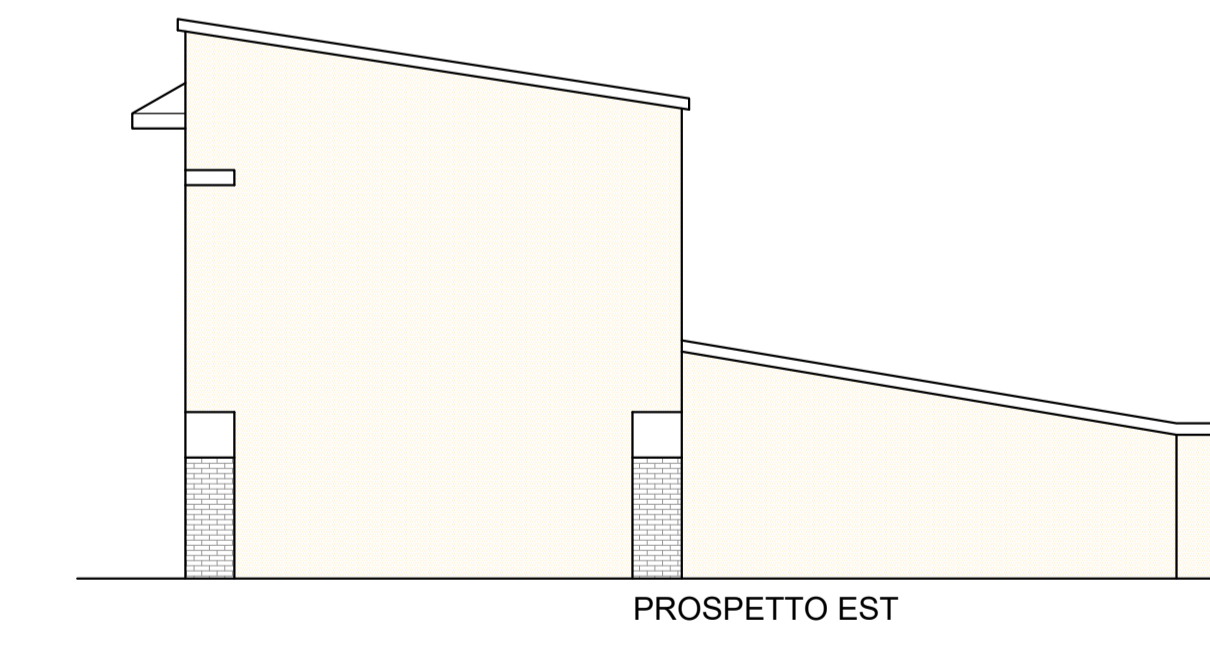
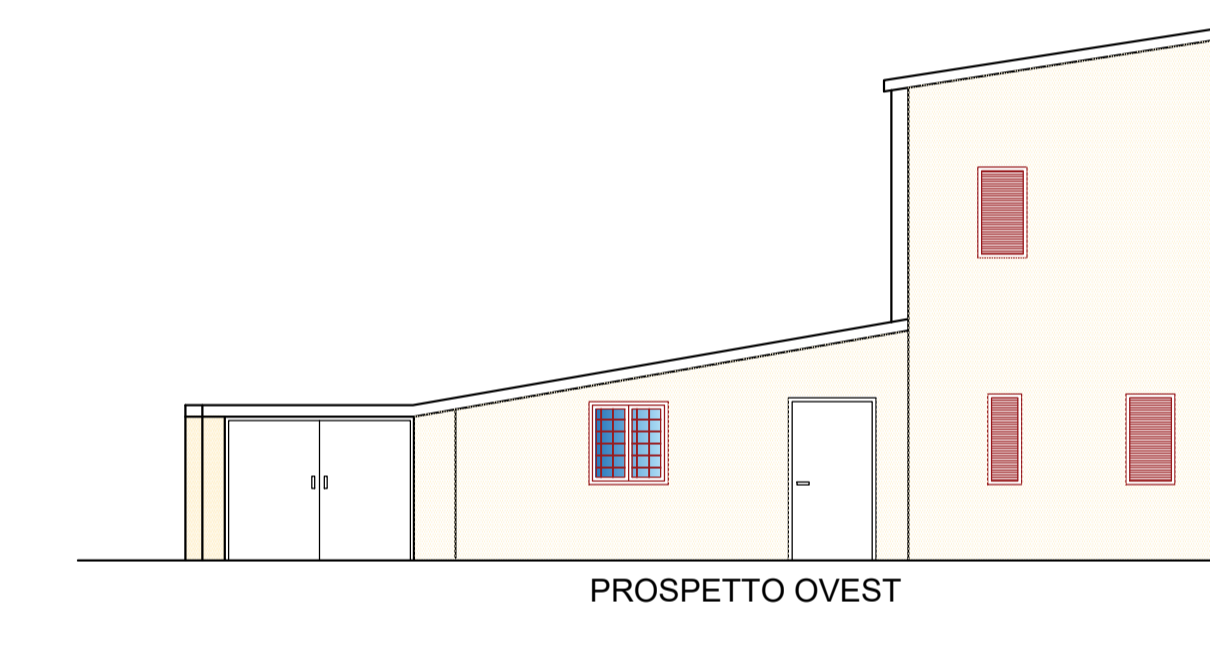
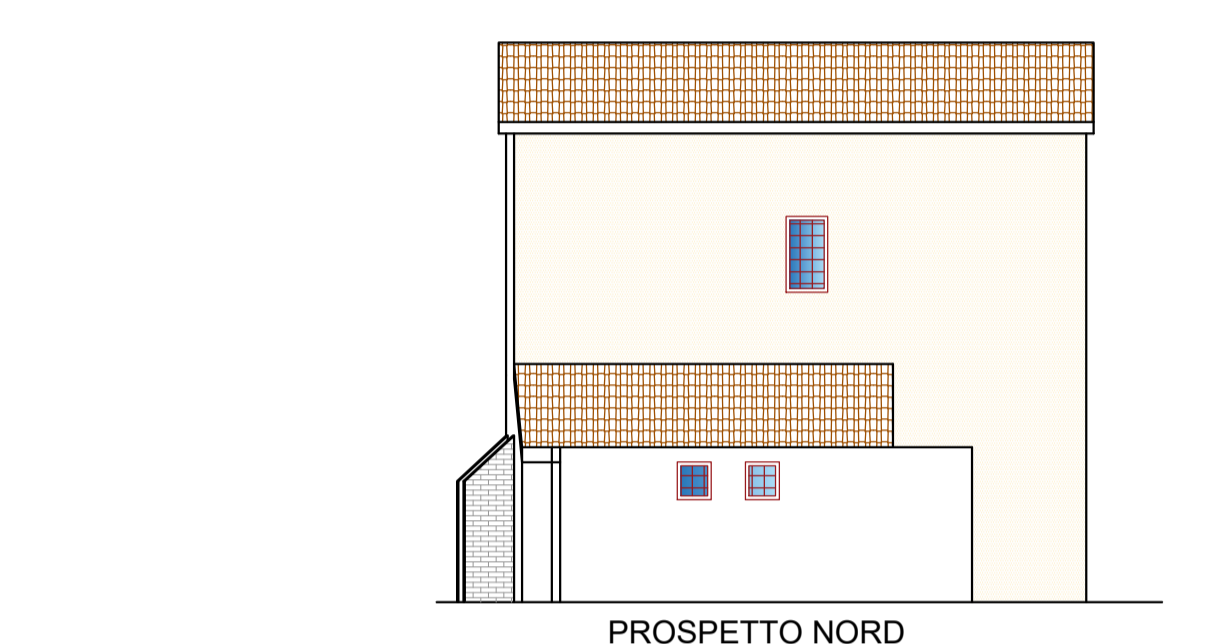
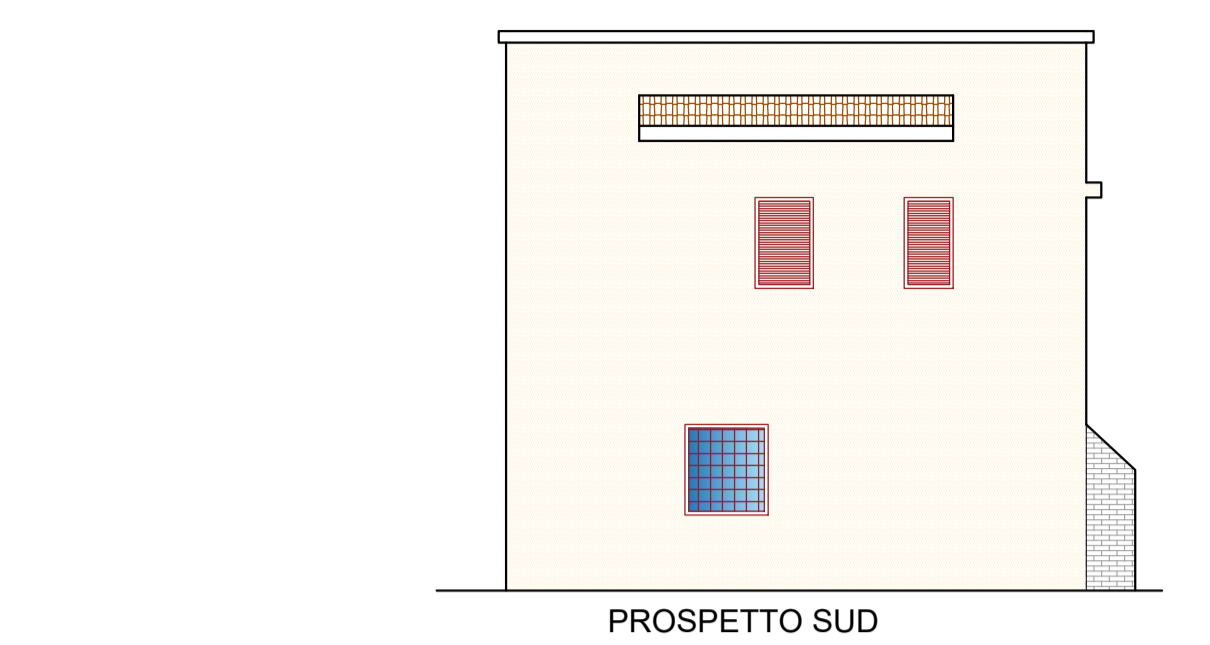
PIANTA PIANO TERRA
 Sup. utile = 49.74 mq
 Sup. non residenziale = 12.50 mq
 Volume = 228.33 mc
 Volume non residenziale = 32.04 mc



PIANTA PRIMO PIANO
 Sup. utile = 34.50 mq
 Volume = 108.67 mc



PIANTA COPERTURA



SEZIONE A-B