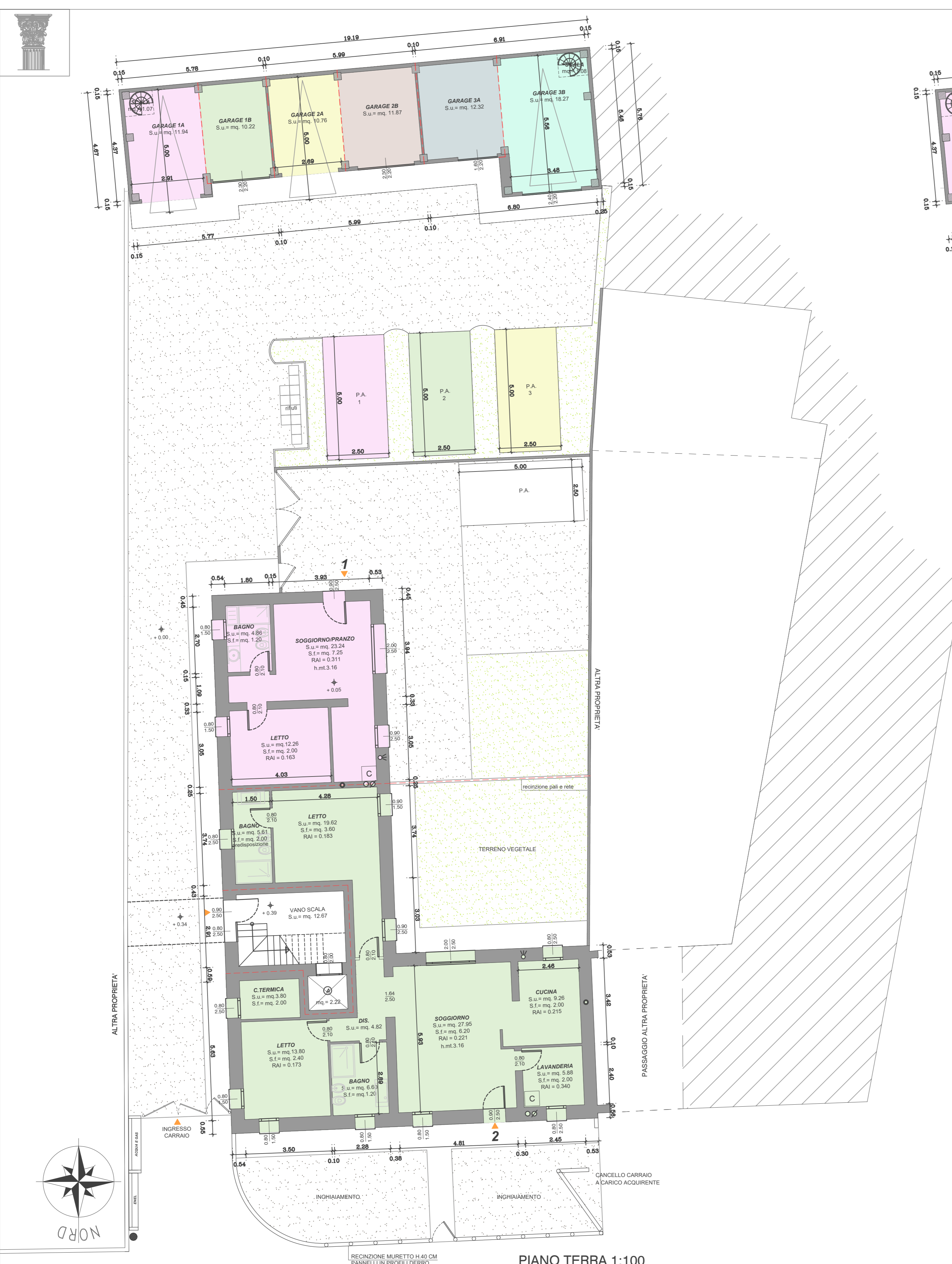
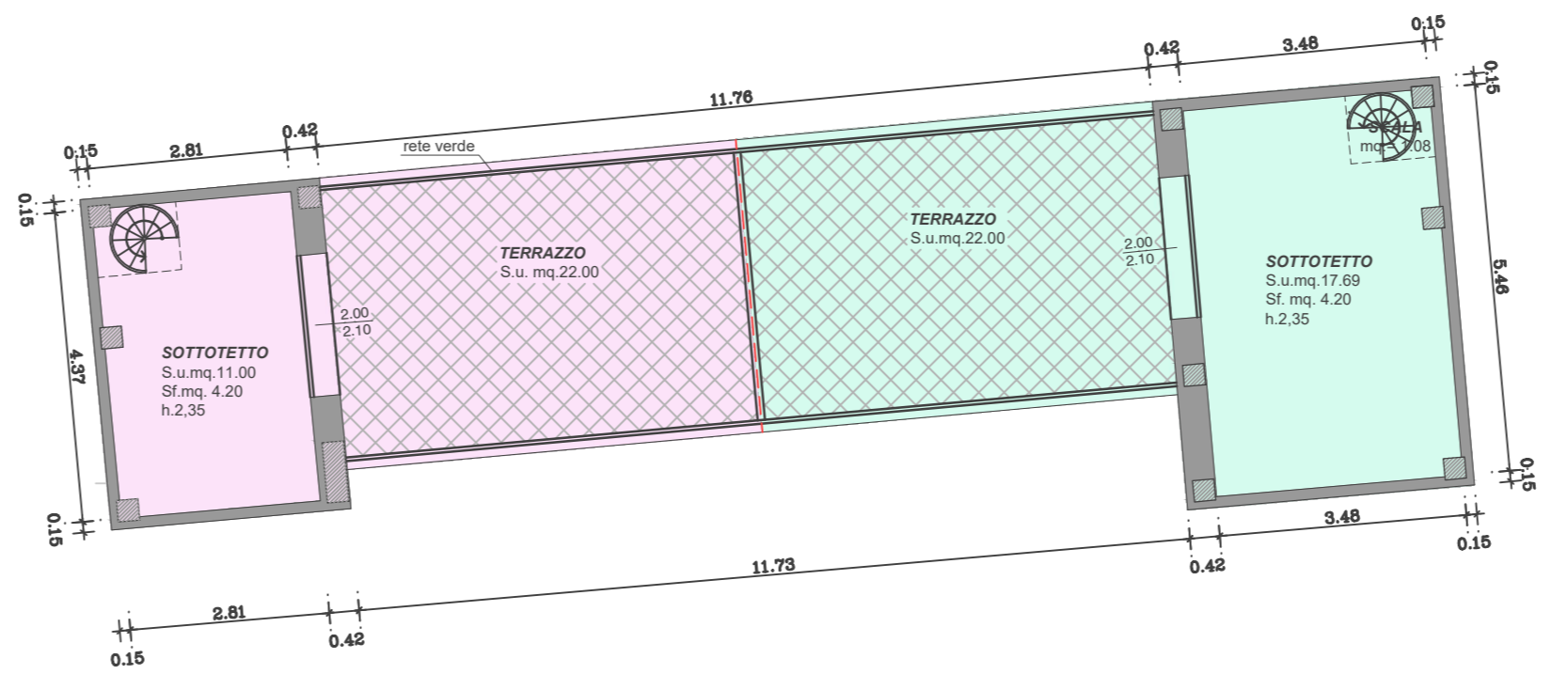


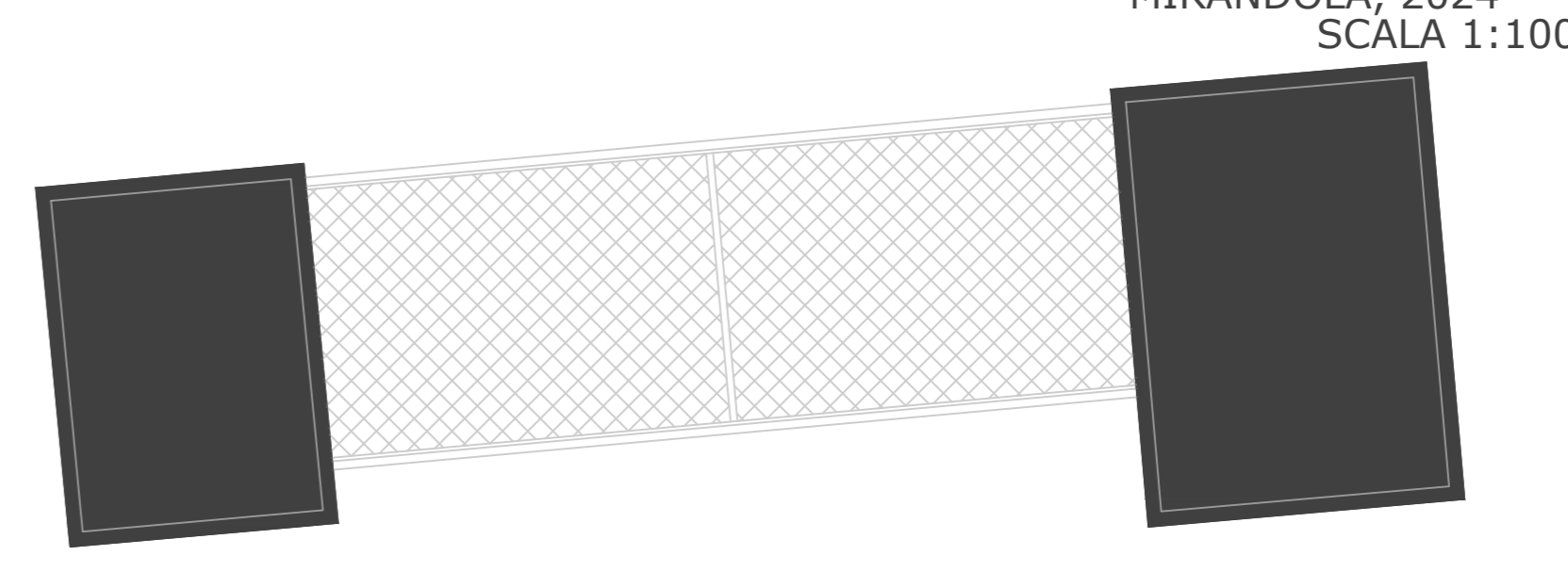
ANALISI COMMERCIALE PER SUDDIVISIONE IMMOBILE POSTO IN VIA FIUME, MIRANDOLA



PIANO TERRA 1:100



PIANO PRIMO 1:100



PIANO SECONDO 1:100

GARAGE 1a	MQ. 15.10	SOTTOT. MQ.15,80X50% = 7.90 MQ	TERRAZZO MQ.24,20X2/3 = 16.13 MQ
GARAGE 1b	MQ. 11.35		
GARAGE 2a	MQ. 11.95	P.AUTO 1 A CORPO	
GARAGE 2b	MQ. 13.15	P.AUTO 2 A CORPO	
GARAGE 3a	MQ. 13.60	P.AUTO 3 A CORPO	
GARAGE 3b	MQ. 22.00	SOTTOT. MQ.23,35X50% = 11.67 MQ	TERRAZZO MQ.24,30X2/3 = 16.20 MQ

SUP.COMMERCIALI					
APPARTAMENTO 1	APPARTAMENTO 2	APPARTAMENTO 3	APPARTAMENTO 4	APPARTAMENTO 5	APPARTAMENTO 6
P.TERRA= MQ. 54.85	P.TERRA= MQ. 131.60	P.PRIMO= MQ. 83.40 TERRAZZO MQ.5,60x 2/3= 3.73 MQ VANI COMUNI= MQ. 17.30	P.PRIMO= MQ. 94.25 TERRAZZO MQ.6,84 x 2/3= 4.56 MQ VANI COMUNI= MQ. 20.50	P.SECONDO= MQ. 87.25 TERRAZZO MQ.5,60x 2/3= 3.73 MQ VANI COMUNI= MQ. 18.10	P.SECONDO= MQ. 94.25 TERRAZZO MQ.6,84 x 2/3= 4.56 MQ VANI COMUNI= MQ. 20.50
TOTALE MQ. 67.95	TOTALE MQ. 142.50	TOTALE MQ. 104.43	TOTALE MQ. 119.31	TOTALE MQ. 109.08	TOTALE MQ. 119.31

MIRANDOLA, 2024  
SCALA 1:100