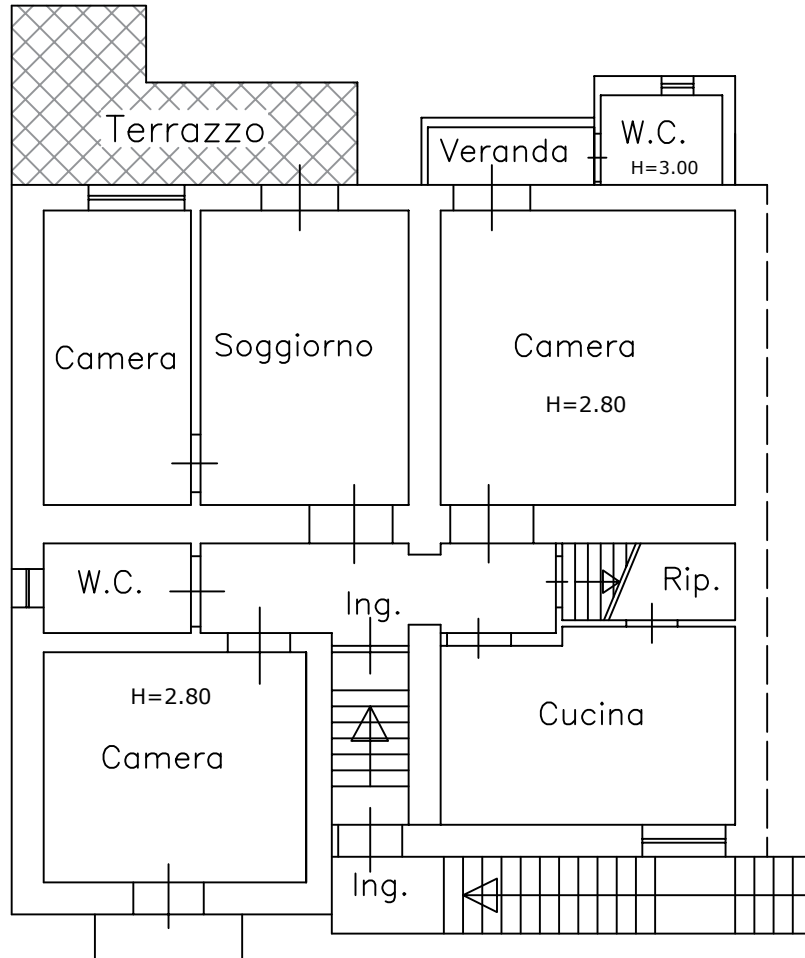


PIANTA PIANO PRIMO

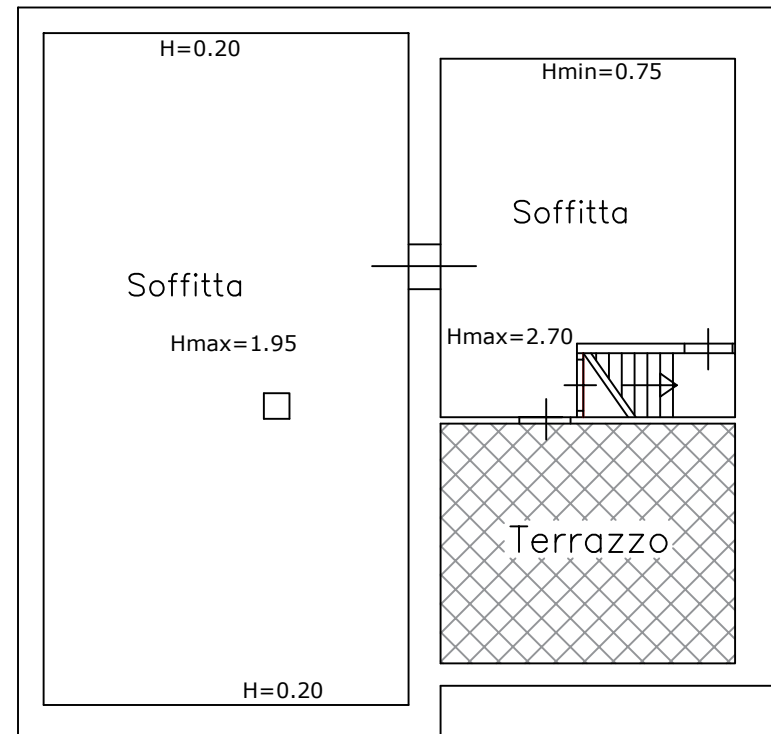
SUPERFICIE CALPESTABILE = 95 MQ
SUPERFICIE TERRAZZO = 12 MQ



Via Serra

PIANTA PIANO SECONDO – SOFFITTA

SUPERFICIE CALPESTABILE = 80 MQ
SUPERFICIE TERRAZZO = 17 MQ

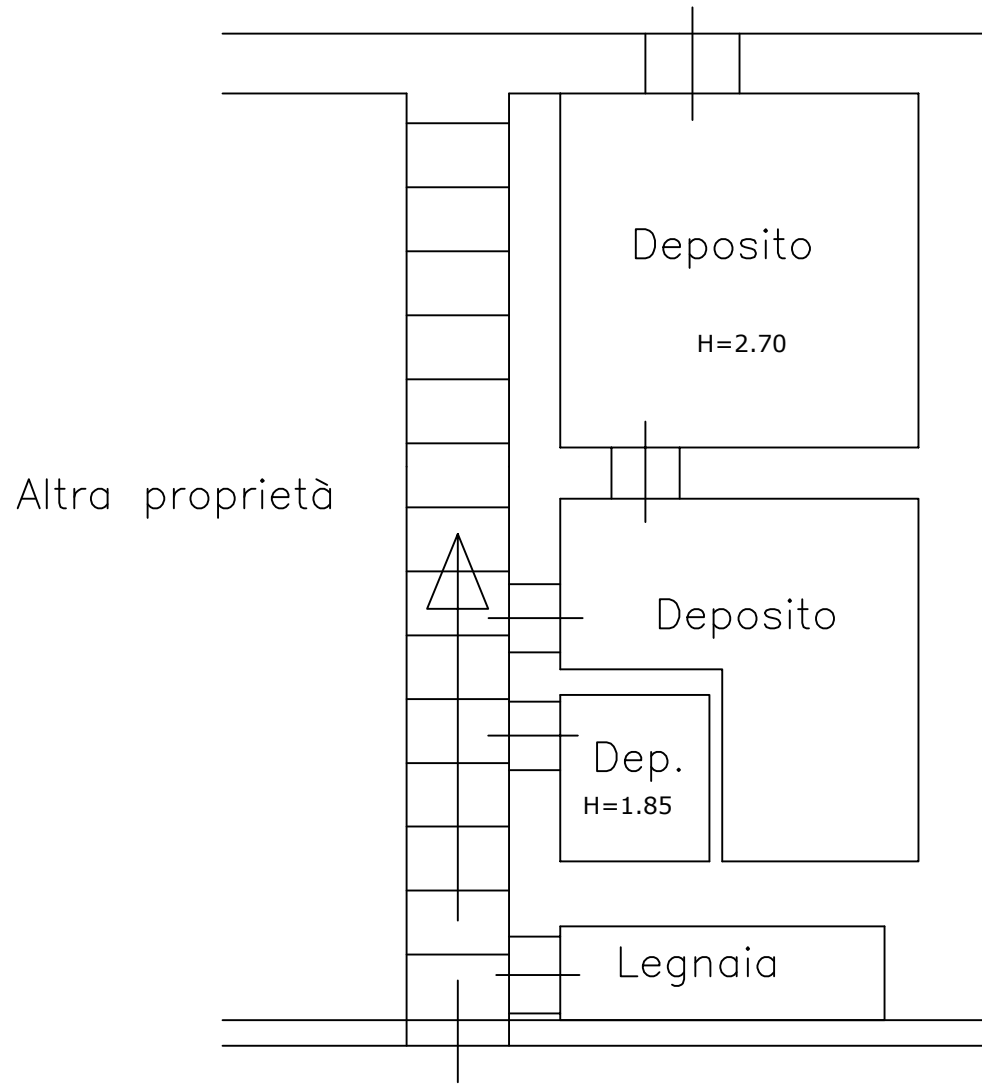


Via Serra



PIANTA PIANO SEMINTERRATO

SUPERFICIE CALPESTABILE = 35 MQ



Via Serra