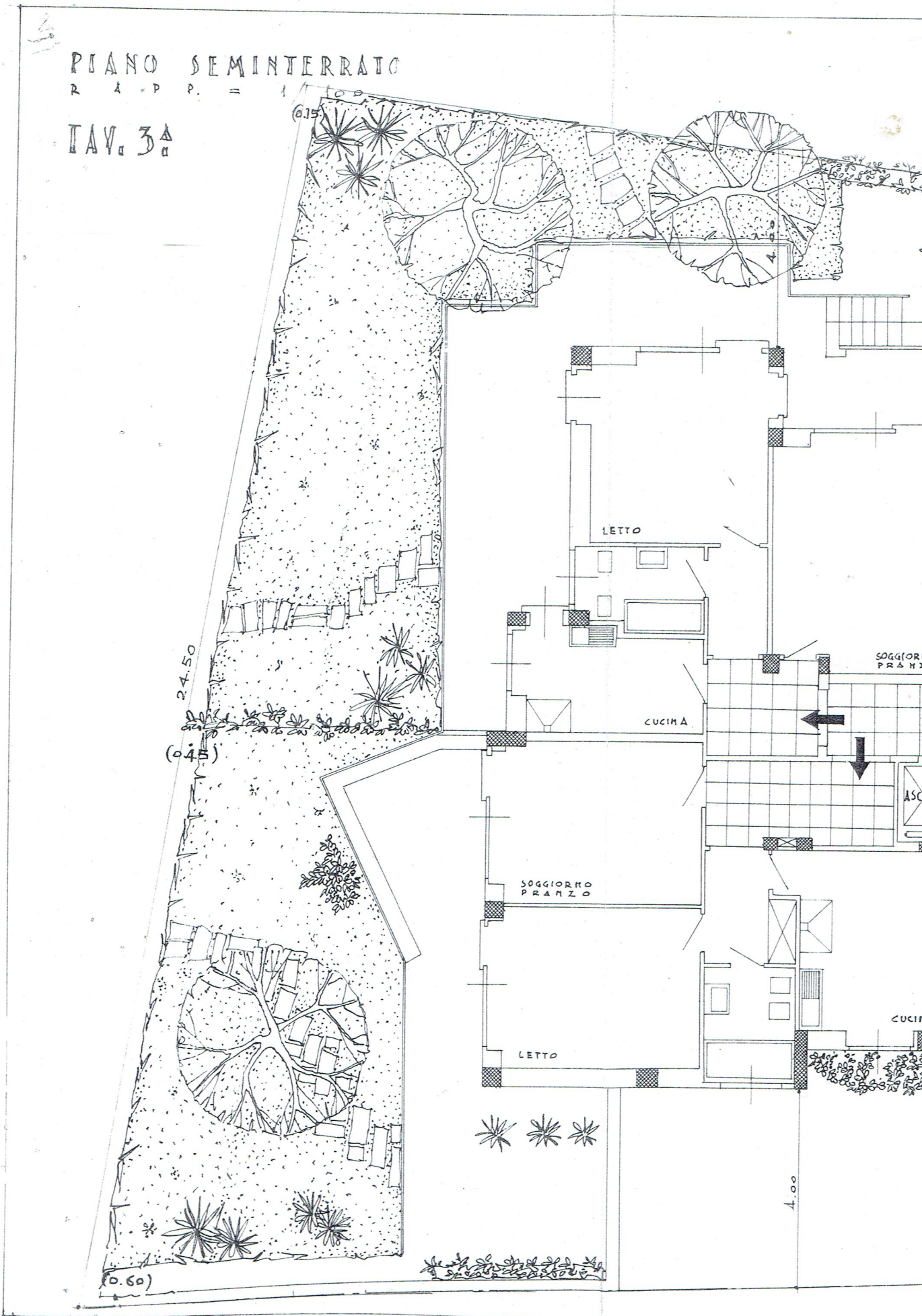


PIANO SEMINTERRATO

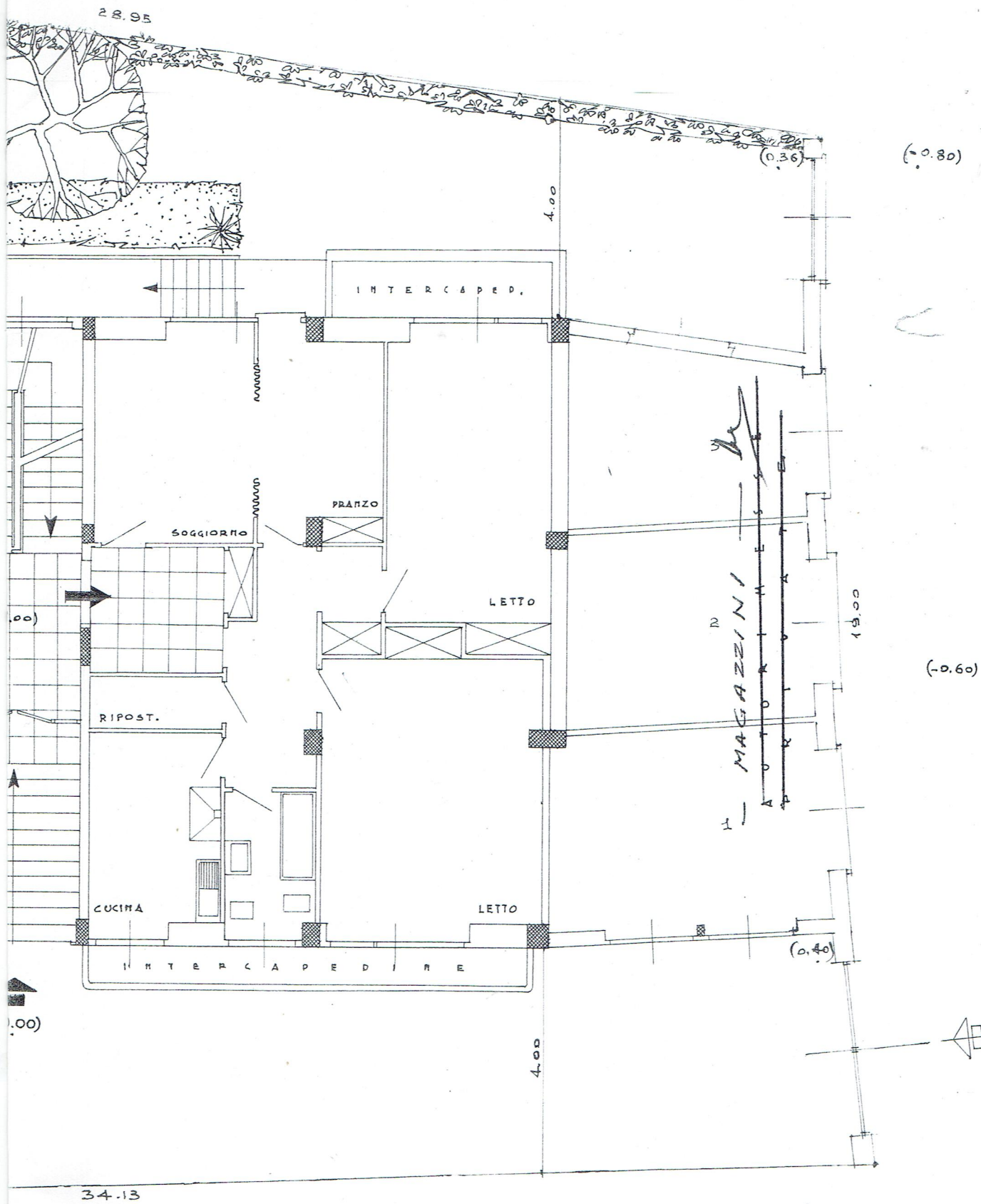
R A P P. = 1

TAV. 3<sup>A</sup>



N.B. SUP. ACCESSORI AMMISSIBILE : mq. 234.40/4 = mq. 58.60

" " EFFETTIVA : (VED. COMPUTO TAV. 5<sup>A</sup>) " 5





PROGETTO PER LA COSTRUZIONE  
DI UN VILLINO IN ROMA  
VIA GIOVANNI MARRADI  
(PRESSO LA STRADA PROVINCIALE MOMENTANA)

PROPRIETARI:  
ANGEROSA NATALIA

E  
D'ALBORE GENNARO

*Uscelino Casperini*  
per D'Albore Gennaro  
Albore Gennaro Gennaro

PROGETTISTA  
DR. ING. VITTORIO RICCI

*Vittorio Ricci*

DIRETTORE DEI LAVORI

*U. P. P. P.*

*5/12/62*

*6/12/62*

*Paul*

*San*

*[Stamp]*  
5 DIC 1962

**S. P. Q. R.**  
RIPARTIZIONE XV URBANISTICA - EDILIZIA PRIVATA

**PARERE FAVOREVOLE**

Espresso nella seduta della G. E. del **- 6 DIC. 1962**  
ed approvato dal Sindaco con nota n° **71896**  
del **20-XII-62**

ISPETTORE CAPO DELL'EDILIZIA PRIVATA  
(DOTT. ARCH. SCIPIONE COSTA)

G A S P A A S T A M P A

ST

30

29

28

V

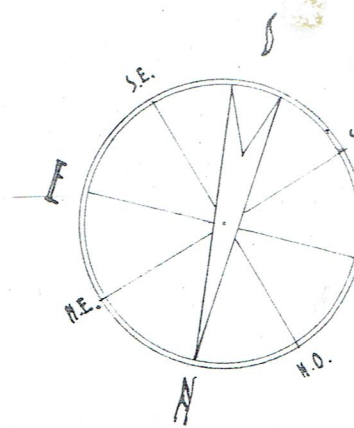
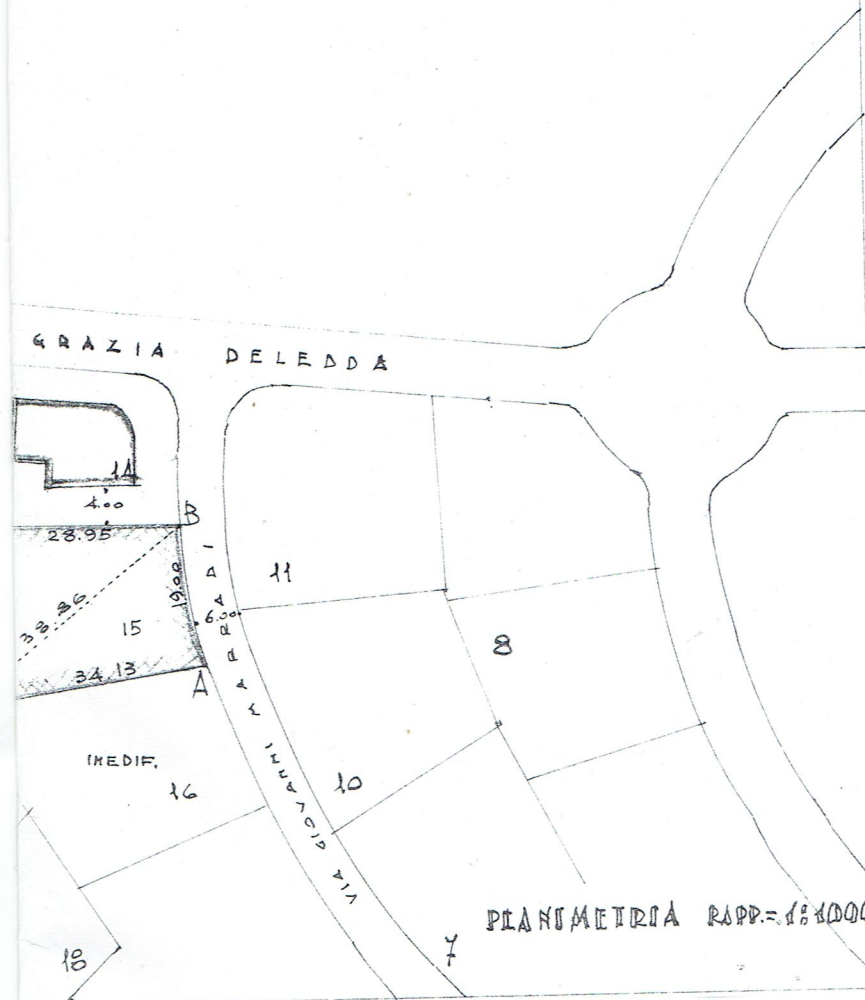
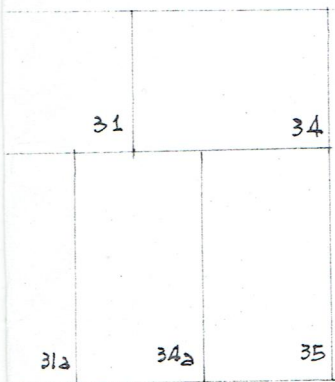
IMEDIF.

12

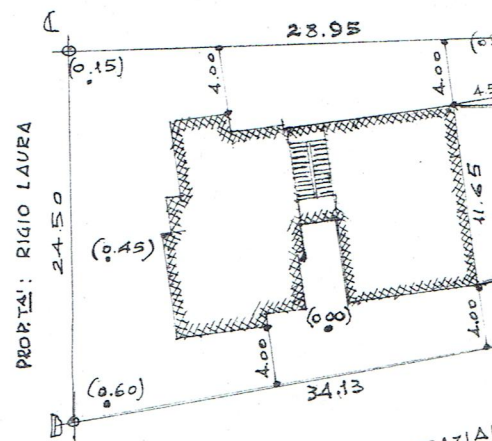
13

IMEDIF.

DA PROVINCIALE MOMENTANA



PROP. TA': SUPRANI DIMO



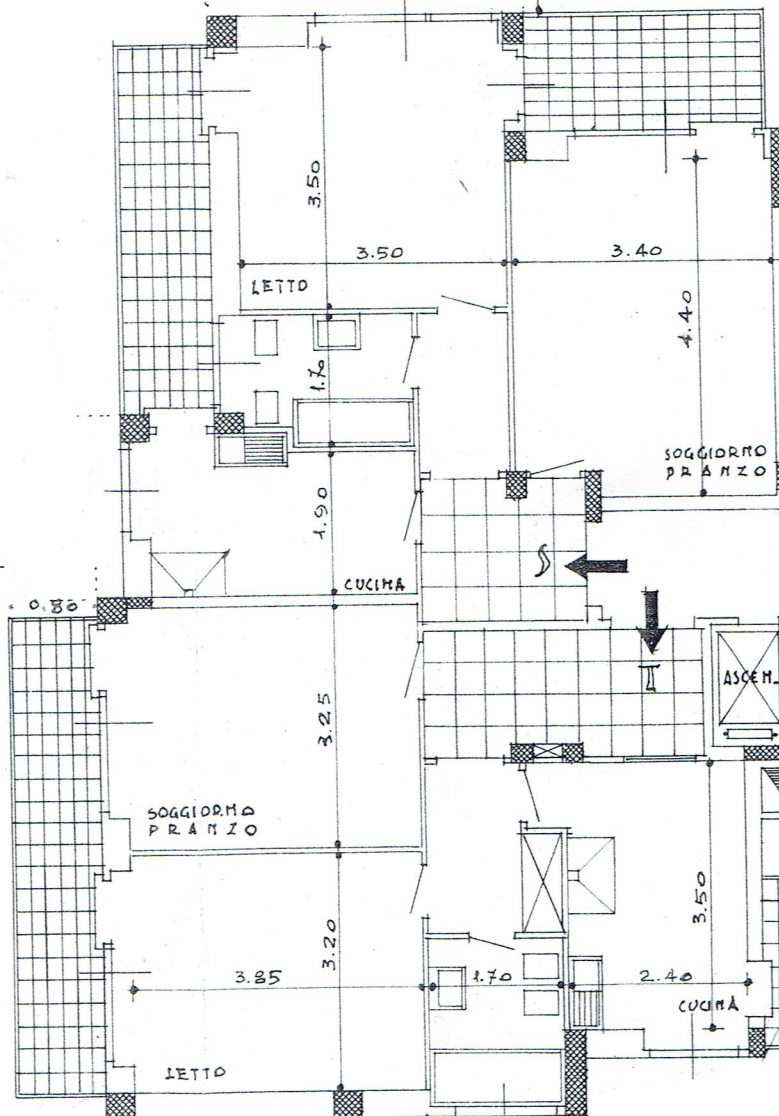
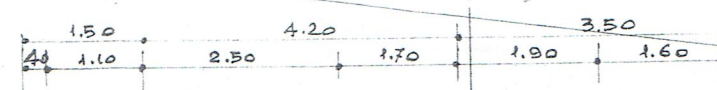
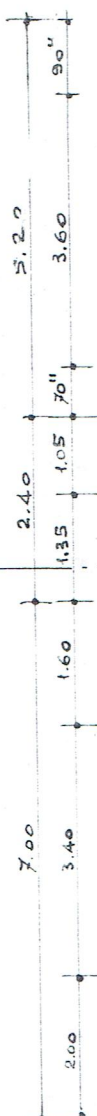
PROP. TA': GRAZIA ANTONI

SUPERFICIE TERRENO = M<sup>2</sup>  
 " COPERTA FAB. = "

PIANO TIPO  
(RIALZ. 1<sup>a</sup> E 2<sup>a</sup> P.)  
R & P P. = 1/100

TAV. 4<sup>A</sup>

24.50



4.00

4.00



