

Residence Green Houses

Immobiliare RO.MA. s.r.l.



RESIDENCE
NEW
GARDEN
HOUSE





La vostra casa nel verde a 10 minuti da Padova Centro
Località Chiesanuova
Comoda a tutti i servizi: Scuola - Farmacia- Banca - Supermercato

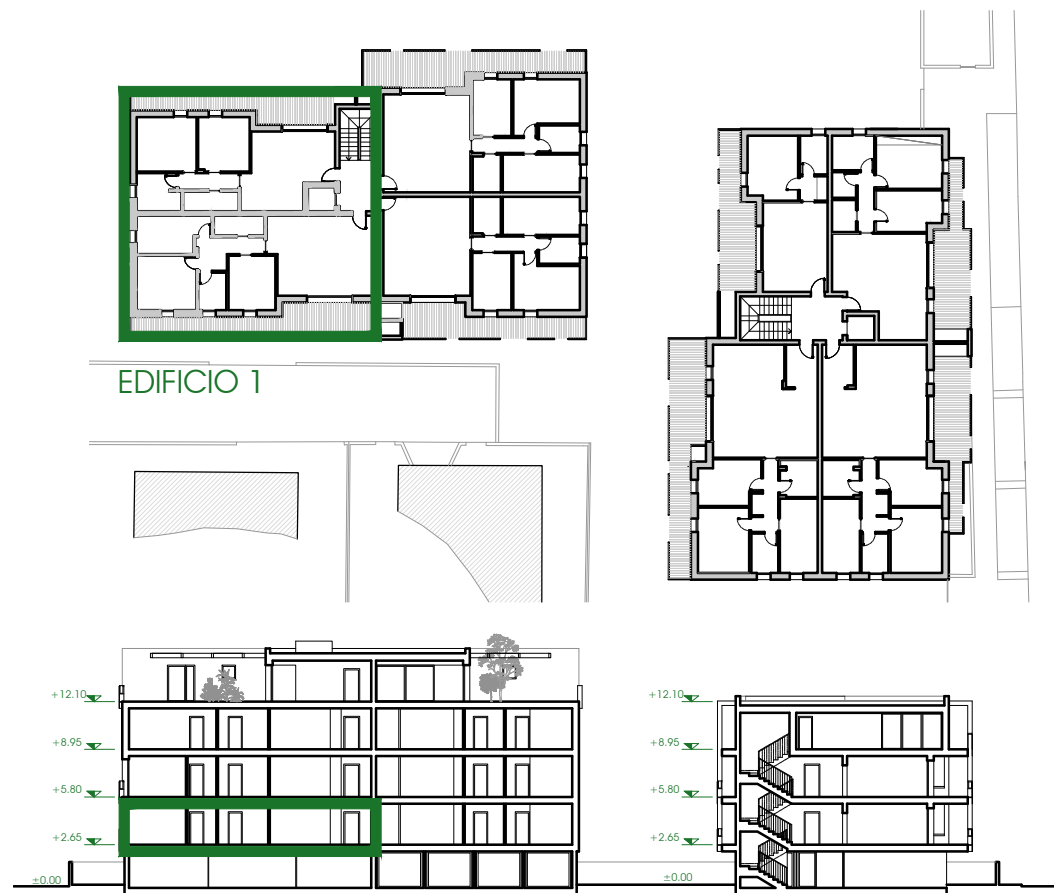


DATI METRICI GARAGES - PIANO TERRA - EDIFICIO 1

	SUPERFICIE CALPESTABILE	SUPERFICIE COMM.LE
G.01	16.18 mq	9.64 mq
G.02	16.18 mq	8.96 mq
G.03	16.18 mq	8.96 mq
G.04	16.18 mq	9.64 mq
G.05	15.10 mq	8.40 mq
G.06	15.10 mq	8.79 mq
G.07	15.94 mq	9.09 mq
G.08	15.94 mq	8.84 mq
G.09	15.94 mq	8.84 mq
G.10	15.94 mq	9.50 mq
G.11	15.94 mq	9.50 mq
G.12	15.94 mq	8.83 mq
G.13	15.94 mq	8.83 mq
G.14	15.94 mq	9.50 mq
TOTALE	222.44 mq	127.32 mq

DATI METRICI - PIANO TERRA - POSTI AUTO

	SUPERFICIE COMMERCIALE
P.A.01	13.00 mq
P.A.02	13.00 mq
P.A.03	13.00 mq
P.A.04	13.00 mq
P.A.05	12.50 mq
P.A.06	12.50 mq
P.A.07	12.50 mq
P.A.08	12.50 mq
P.A.09	12.50 mq
P.A.10	12.50 mq
P.A.11	12.50 mq
P.A.12	12.50 mq
P.A.13	12.50 mq
P.A.14	12.50 mq
P.A.15	12.50 mq
TOTALE	189.50 mq



0 1 m 2 m 5 m



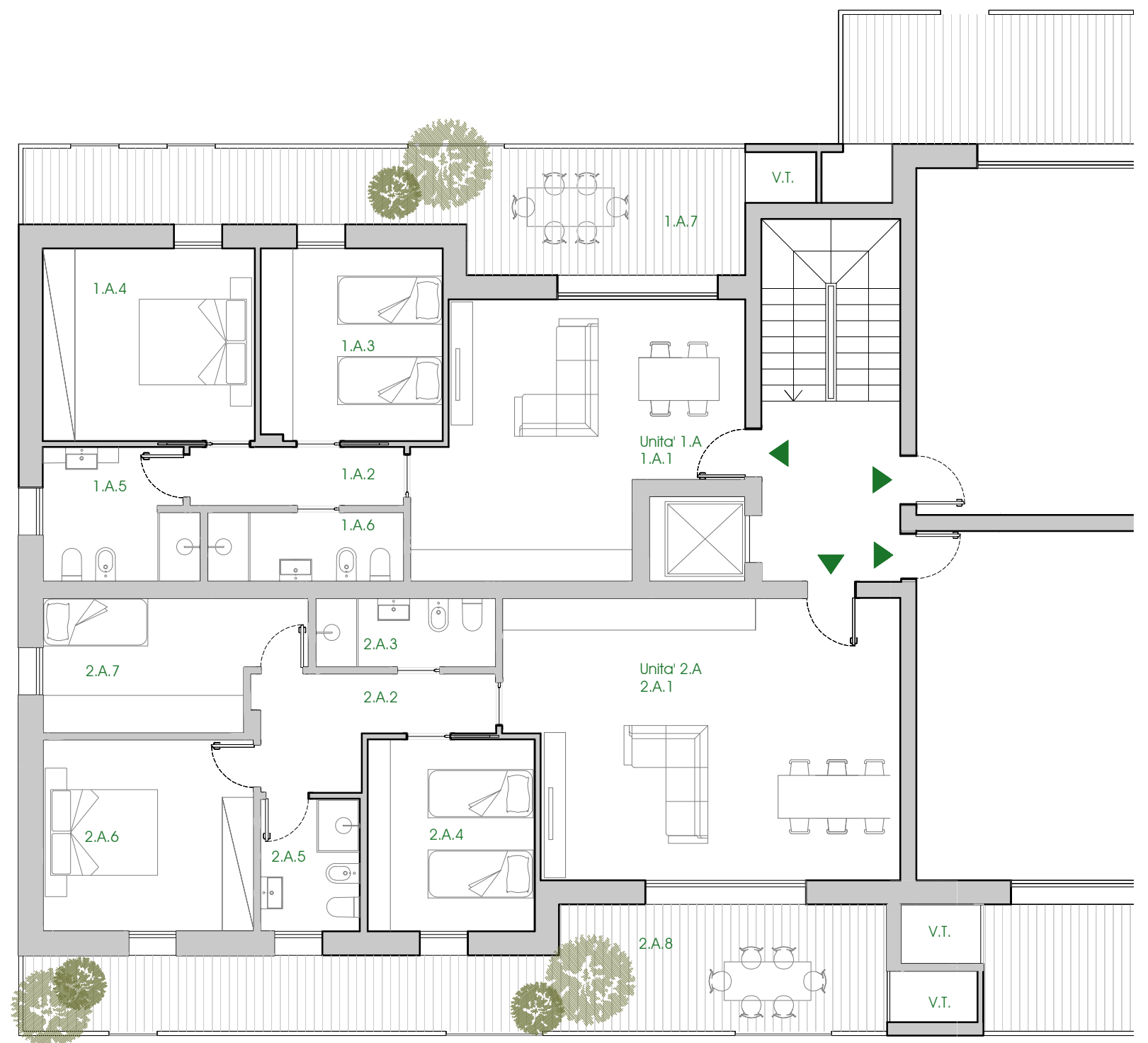
Scala 1:100

DATI METRICI UNITA' 1A

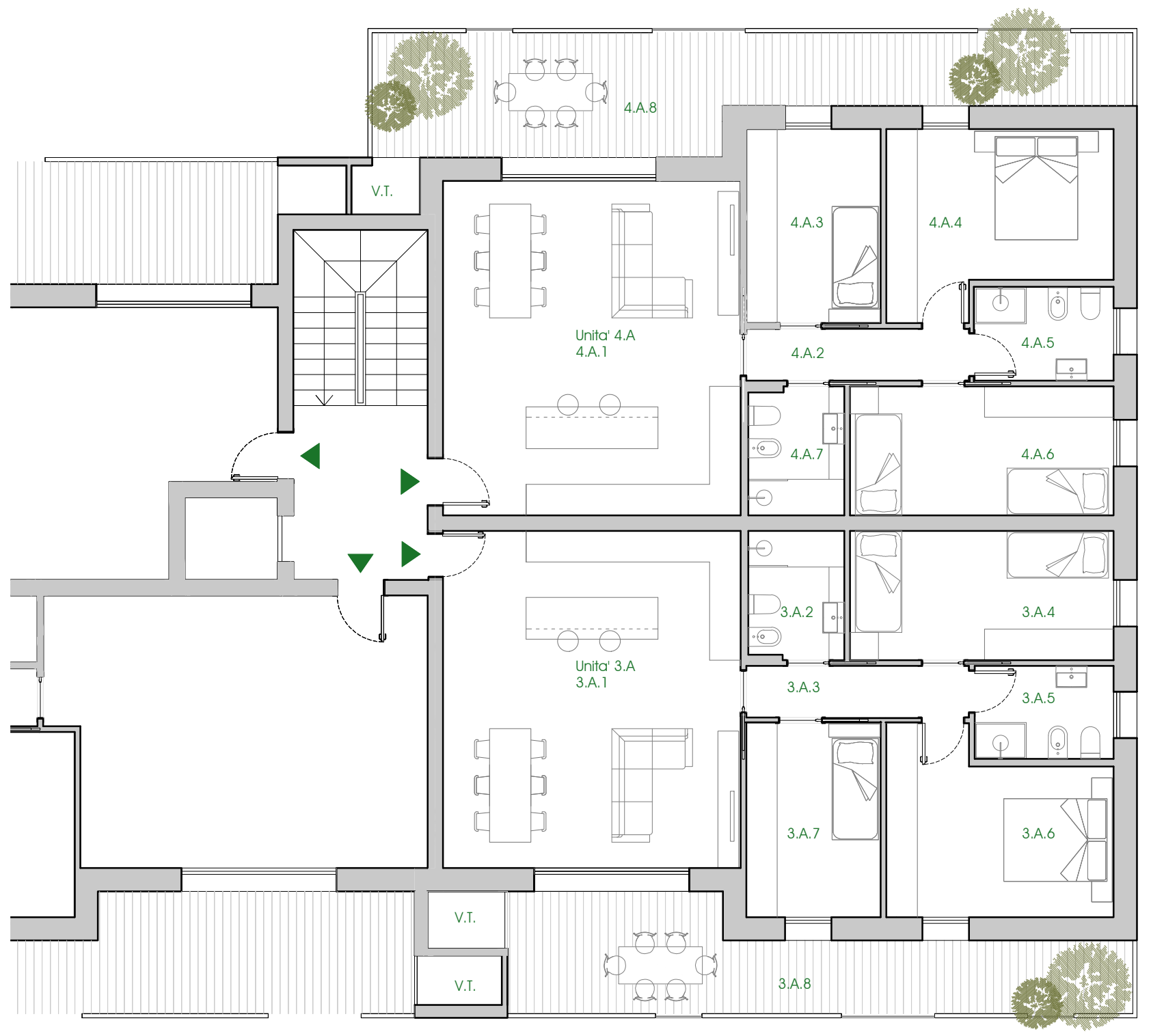
1A.1	zona giorno	27.05 mq
1A.2	disimpegno	4.40 mq
1A.3	camera	12.20 mq
1A.4	camera	14.23 mq
1A.5	bagno	6.99 mq
1A.6	bagno	4.80 mq
SUPERFICIE CALPESTABILE		69.69 mq
1A.7	terrazzo	24.10 mq
SUPERFICIE COMMERCIALE		102.76 mq

DATI METRICI UNITA' 2A

2A.1	zona giorno	37.27 mq
2A.2	disimpegno	7.18 mq
2A.3	bagno	4.40 mq
2A.4	camera	11.17 mq
2A.5	bagno	4.60 mq
2A.6	camera	14.16 mq
2A.7	camera	11.09 mq
SUPERFICIE CALPESTABILE		89.87 mq
2A.8	terrazzo	28.74 mq
SUPERFICIE COMMERCIALE		130.25 mq



Piano PRIMO- EDIFICIO 1



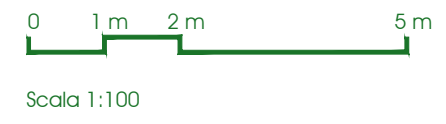
DATI METRICI UNITA' 3A

3.A.1	zona giorno	37,60 mq
3.A.2	bagno	4,65 mq
3.A.3	disimpegno	4,31 mq
3.A.4	camera	12,75 mq
3.A.5	bagno	4,84 mq
3.A.6	camera	14,20 mq
3.A.7	camera	9,76 mq
SUPERFICIE CALPESTABILE		88,11 mq
3.A.8	terrazzo	21,14 mq
SUPERFICIE COMMERCIALE		123,45 mq

DATI METRICI UNITA' 4A

4.A.1	zona giorno	37,30 mq
4.A.2	disimpegno	4,31 mq
4.A.3	camera	9,76 mq
4.A.4	camera	14,20 mq
4.A.5	bagno	4,84 mq
4.A.6	camera	12,75 mq
4.A.7	bagno	4,60 mq
SUPERFICIE CALPESTABILE		87,76 mq
4.A.8	terrazzo	27,70 mq
SUPERFICIE COMMERCIALE		126,09 mq

Piano PRIMO - EDIFICIO 1

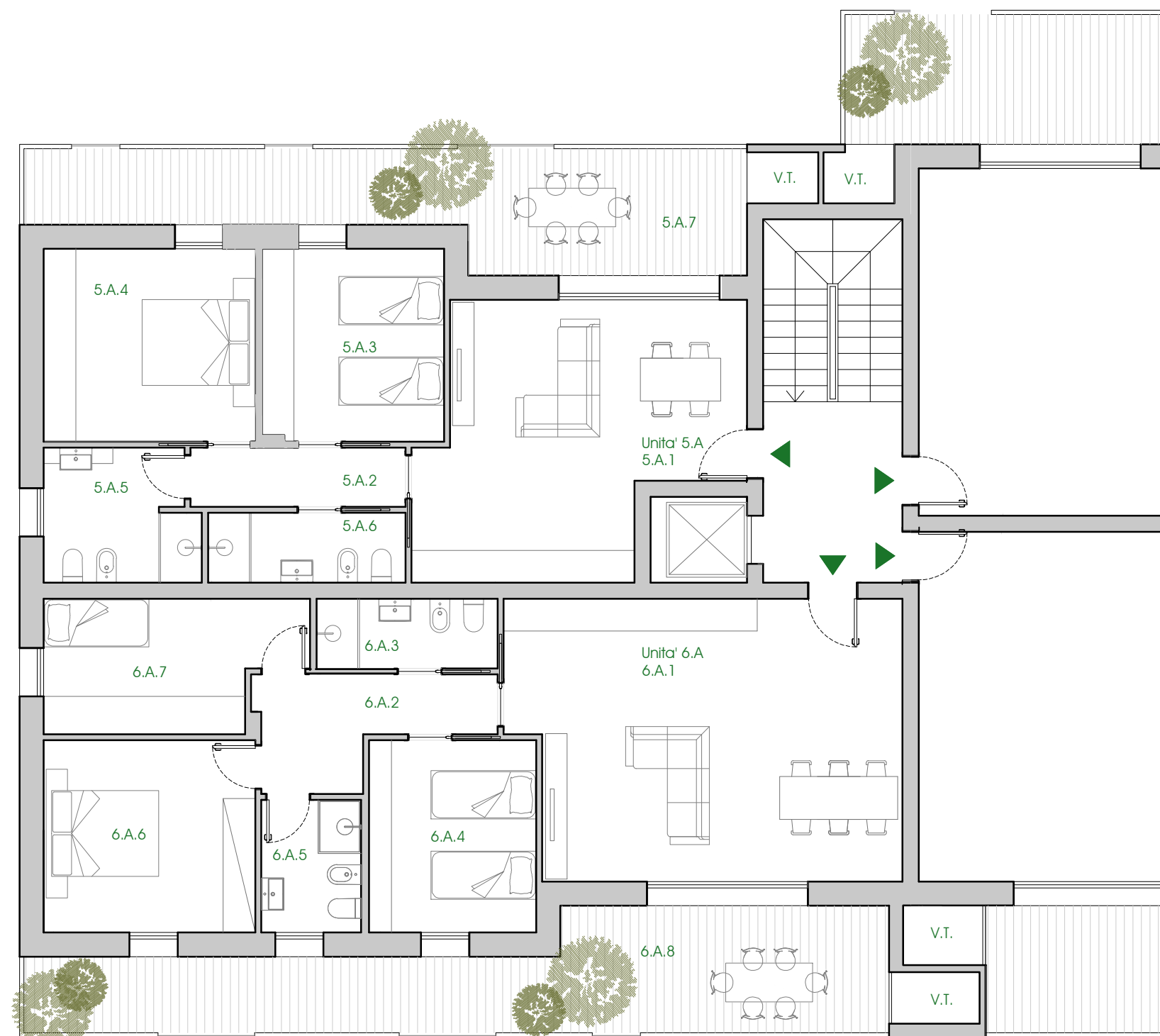


DATI METRICI UNITA' 5.A

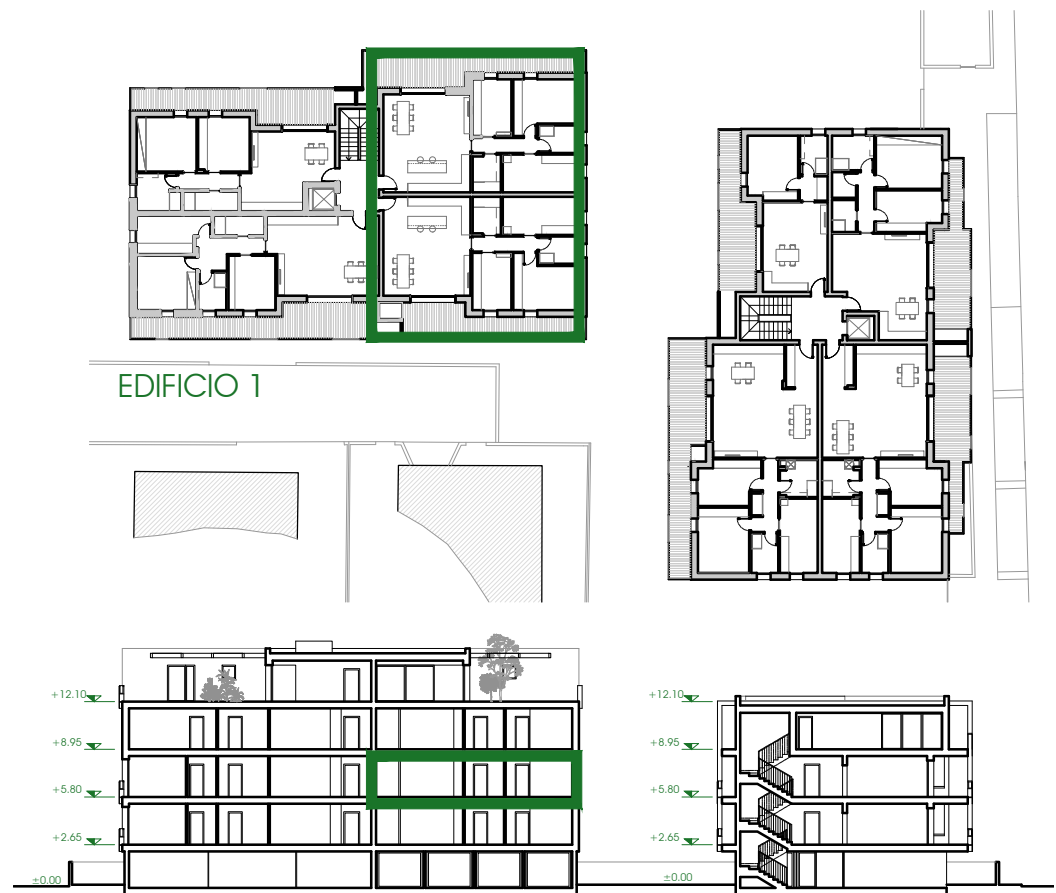
9.A.1	zona giorno	27.05 mq
9.A.2	disimpegno	4.40 mq
9.A.3	camera	12.20 mq
9.A.4	camera	14.23 mq
9.A.5	bagno	6.99 mq
9.A.6	bagno	4.80 mq
SUPERFICIE CALPESTABILE		69.67 mq
9.A.7	terrazzo	24.10 mq
SUPERFICIE COMMERCIALE		102.76 mq

DATI METRICI UNITA' 6A

6.A.1	zona giorno	37.27 mq
6.A.2	disimpegno	7.18 mq
6.A.3	bagno	4.39 mq
6.A.4	camera	11.09 mq
6.A.5	bagno	4.60 mq
6.A.6	camera	14.16 mq
6.A.7	camera	11.17 mq
SUPERFICIE CALPESTABILE		90.07 mq
6.A.8	terrazzo	28.74 mq
SUPERFICIE COMMERCIALE		130.24 mq



Piano SECONDO - EDIFICIO 1



Scala 1:100



DATI METRICI UNITA' 7A

7.A.1	zona giorno	37.60 mq
7.A.2	bagno 01	4.65 mq
7.A.3	disimpegno	4.31 mq
7.A.4	camera 01	12.75 mq
7.A.5	bagno 02	4.84 mq
7.A.6	camera 02	14.20 mq
7.A.7	camera 03	9.76 mq
SUPERFICIE CALPESTABILE		88.11 mq
7.A.8	terrazzo	21.14 mq
SUPERFICIE COMMERCIALE		126.09 mq

DATI METRICI UNITA' 8A

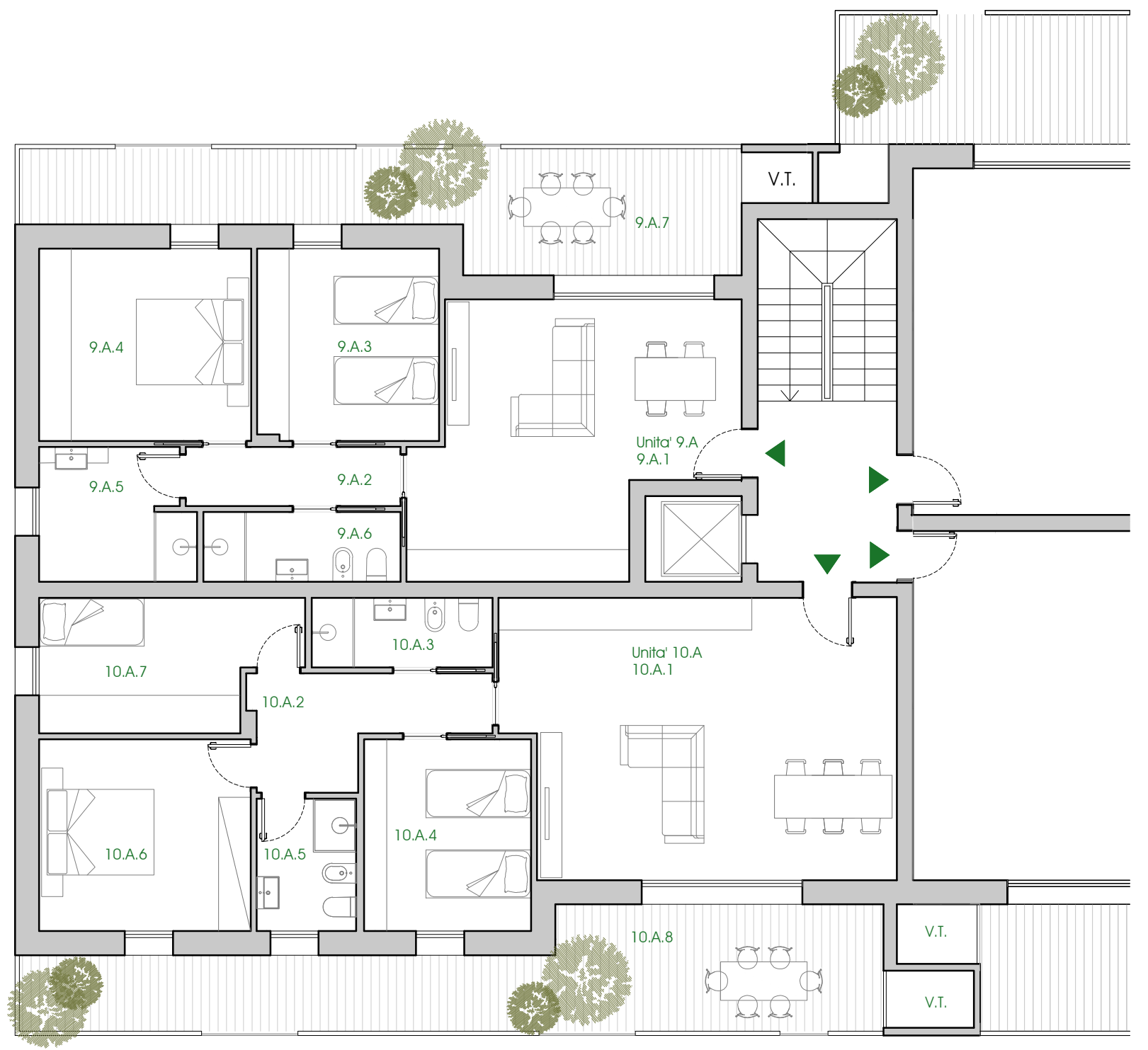
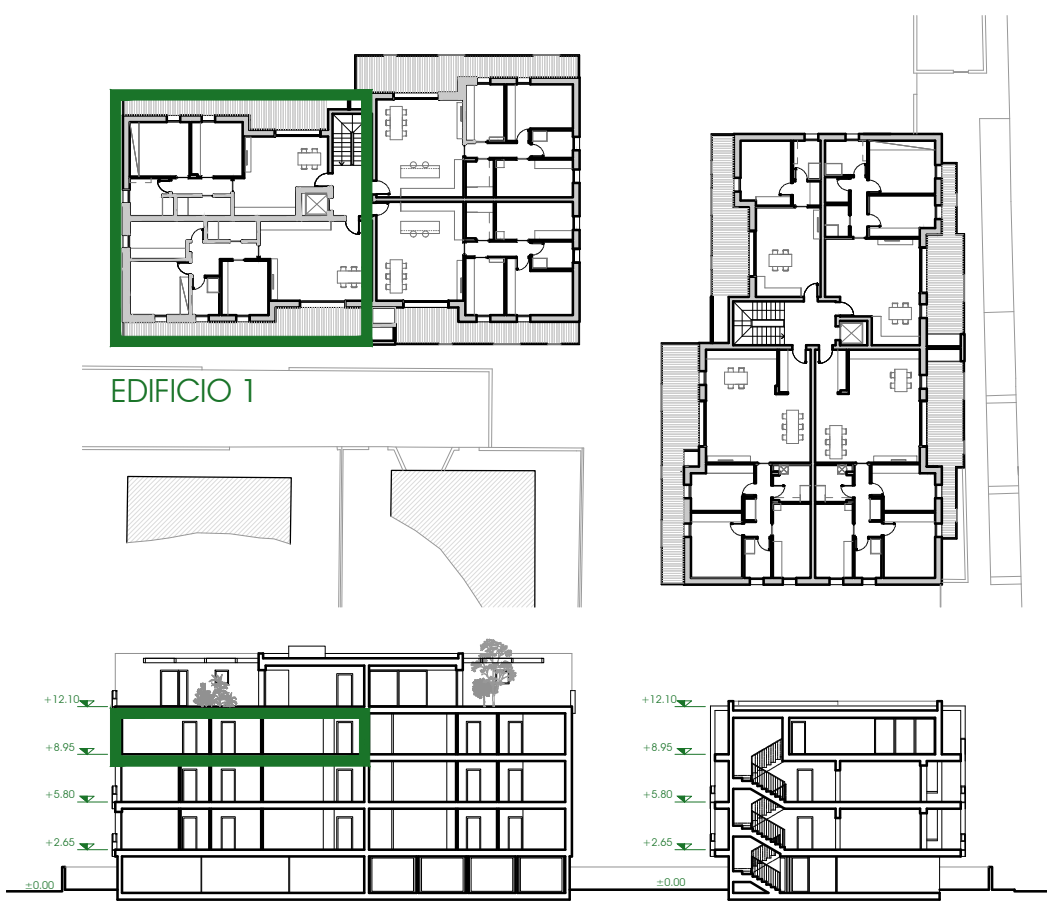
8.A.1	zona giorno	37.30 mq
8.A.2	disimpegno	4.31 mq
8.A.3	camera	9.76 mq
8.A.4	camera	14.20 mq
8.A.5	bagno	4.84 mq
8.A.6	camera	12.75 mq
8.A.7	bagno	4.60 mq
SUPERFICIE CALPESTABILE		87.76 mq
4.A.8	terrazzo	27.70 mq
SUPERFICIE COMMERCIALE		126.09 mq

Piano SECONDO - EDIFICIO 1

0 1 m 2 m 5 m



Scala 1:100



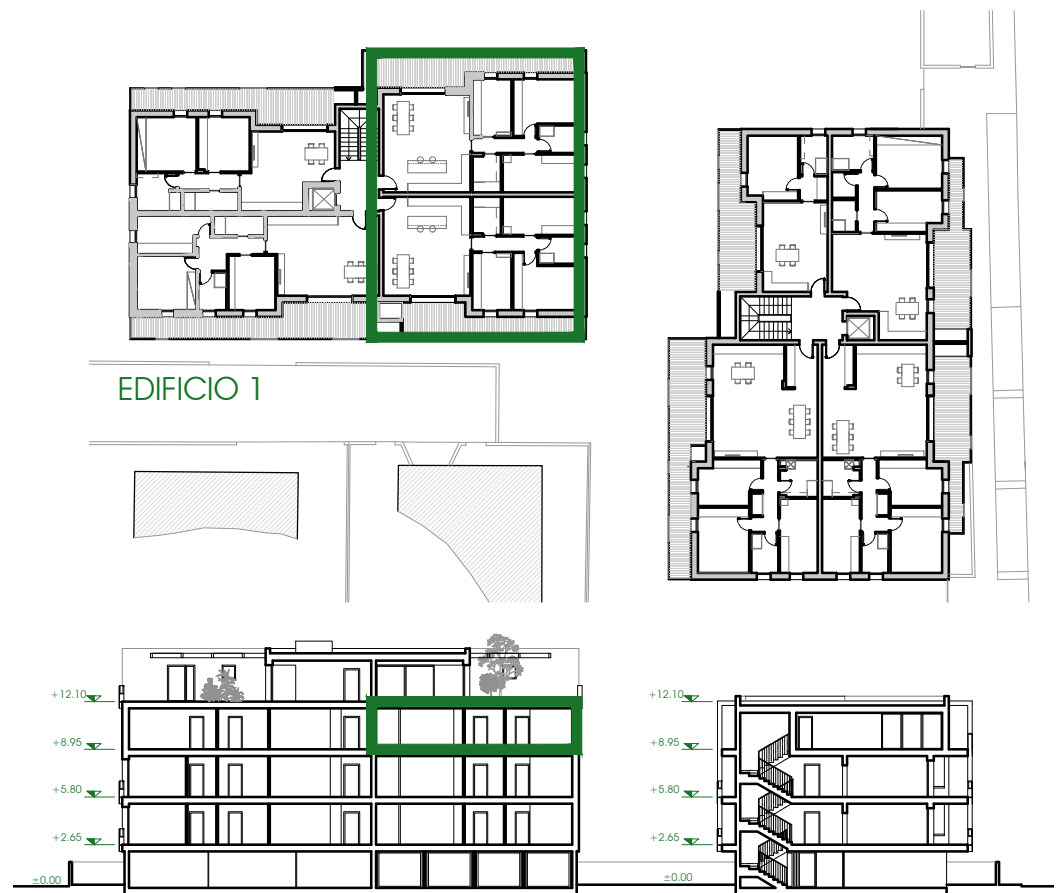
DATI METRICI UNITA' 9.A

9.A.1	zona giorno	27.05 mq
9.A.2	disimpegno	4.40 mq
9.A.3	camera	12.20 mq
9.A.4	camera	14.23 mq
9.A.5	bagno	6.99 mq
9.A.6	bagno	4.80 mq
SUPERFICIE CALPESTABILE		69.67 mq
9.A.7	terrazzo	24.10 mq
SUPERFICIE COMMERCIALE		102.74 mq

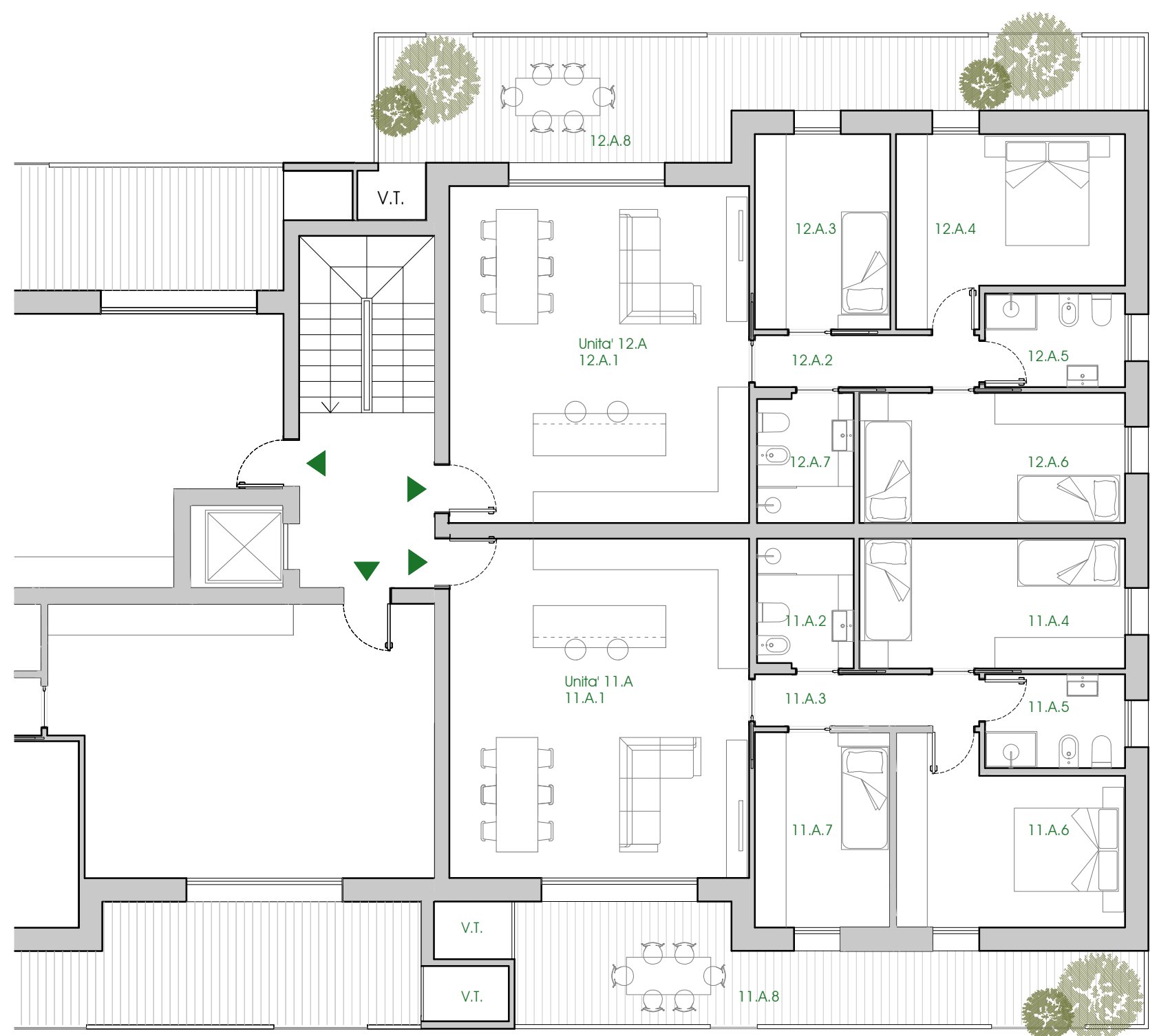
DATI METRICI UNITA' 10.A

10.A.1	zona giorno	37.27 mq
10.A.2	disimpegno	7.18 mq
10.A.3	bagno	4.39 mq
10.A.4	camera	11.17 mq
10.A.5	bagno	4.60 mq
10.A.6	camera	14.16 mq
10.A.7	camera	11.09 mq
SUPERFICIE CALPESTABILE		89.86 mq
10.A.8	terrazzo	28.74 mq
SUPERFICIE COMMERCIALE		129.25 mq

Piano TERZO - EDIFICIO 1



Scala 1:100



Piano TERZO - EDIFICIO 1

DATI METRICI UNITA' 11.A

11.A.1	zona giorno	37.60 mq
11.A.2	bagno	4.60 mq
11.A.3	disimpegno	4.31 mq
11.A.4	camera	12.75 mq
11.A.5	bagno	4.84 mq
11.A.6	camera	14.20 mq
11.A.7	camera	9.76 mq
SUPERFICIE CALPESTABILE		88.06 mq
11.A.8	terrazzo	21.14 mq
SUPERFICIE COMMERCIALE		123.52 mq

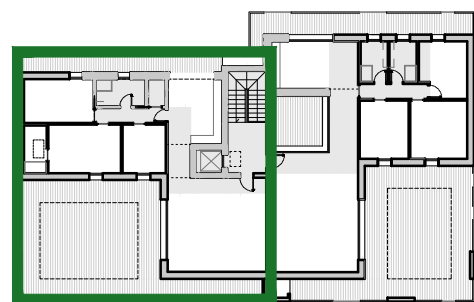
DATI METRICI UNITA' 12.A

12.A.1	zona giorno	37.30 mq
12.A.2	disimpegno	4.31 mq
12.A.3	camera	9.76 mq
12.A.4	camera	14.20 mq
12.A.5	bagno	4.84 mq
12.A.6	camera	12.75 mq
12.A.7	bagno	4.60 mq
SUPERFICIE CALPESTABILE		87.76 mq
12.A.8	terrazzo	27.60 mq
SUPERFICIE COMMERCIALE		126.07 mq

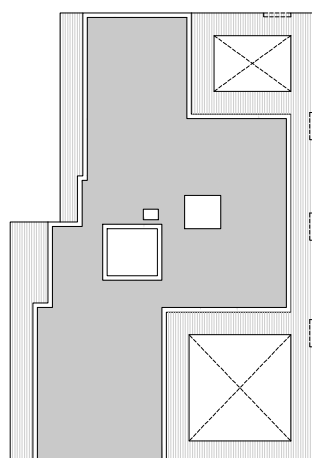
0 1 m 2 m 5 m



Scala 1:100



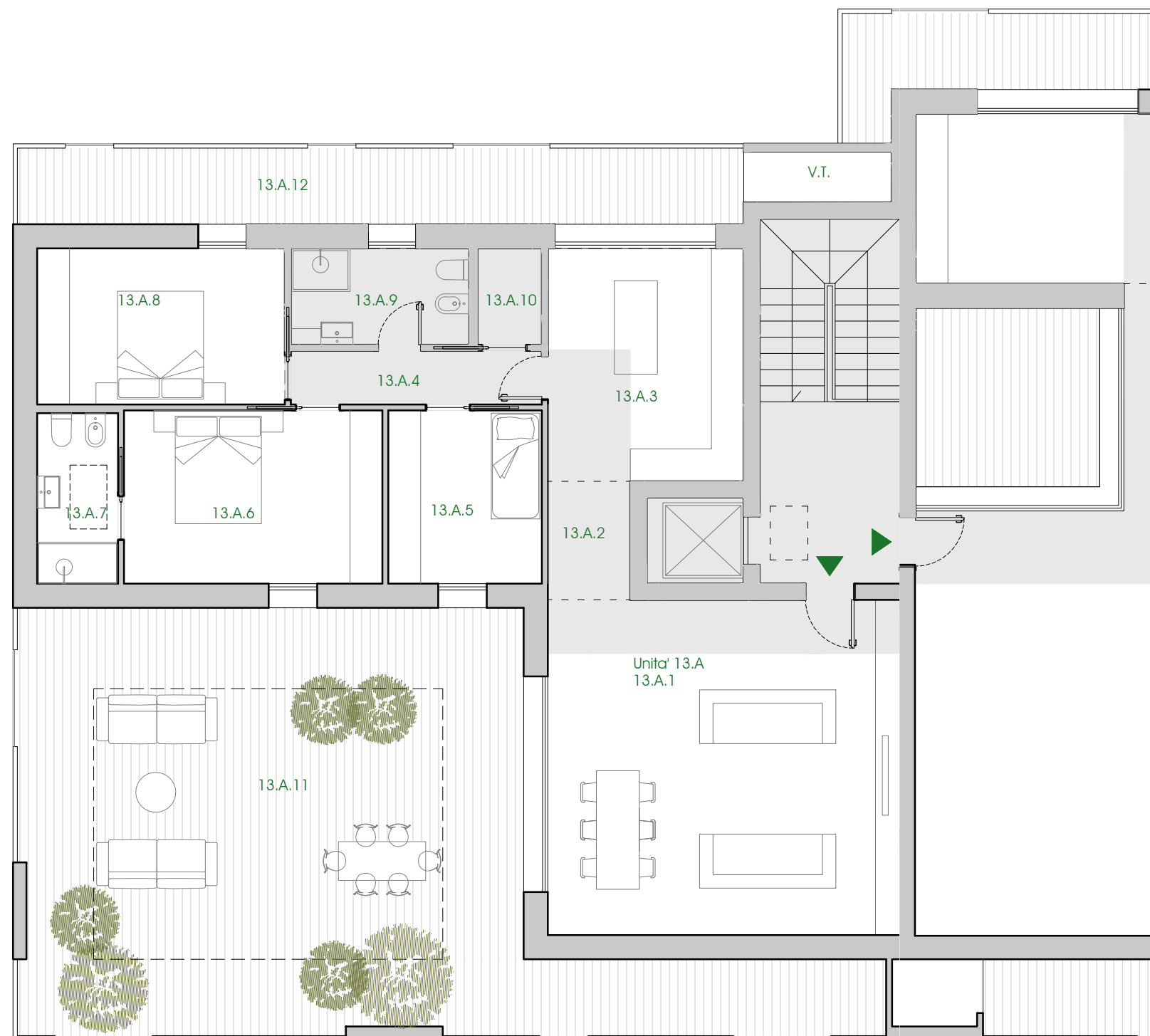
EDIFICIO 1



DATI METRICI UNITA' 13.A

13.A.1	zona giorno	40.68 mq
13.A.2	disimpegno	5.06 mq
13.A.3	cucina	13.90 mq
13.A.4	disimpegno	4.66 mq
13.A.5	camera	9.17 mq
13.A.6	camera	15.43 mq
13.A.7	bagno	4.75 mq
13.A.8	camera	13.35 mq
13.A.9	bagno	5.95 mq
13.A.10	ripostiglio	2.15 mq
SUPERFICIE CALPESTABILE		115.10 mq
13.A.10	terrazzo	84.28 mq
13.A.11	terrazzo	19.11 mq
SUPERFICIE COMMERCIALE		195.07 mq

PORZIONE DI UNITA' IMMOBILIARE CON ALTEZZA 2,40

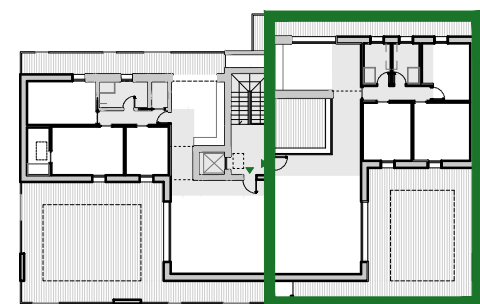


Piano ATTICO - EDIFICIO 1

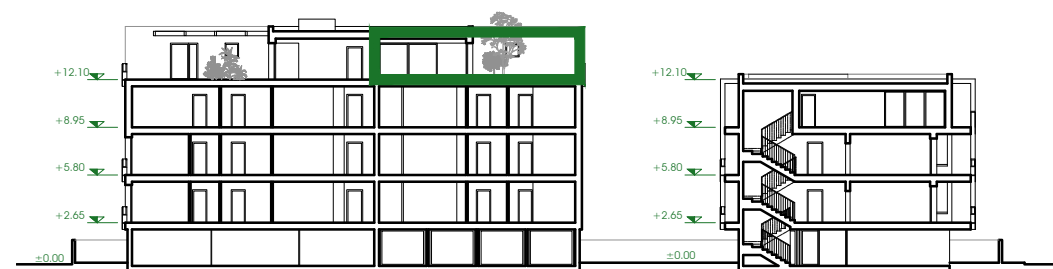
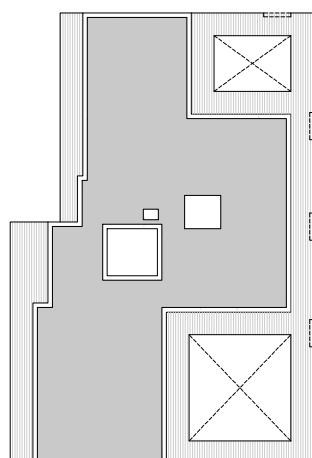
0 1 m 2 m 5 m



Scala 1:100



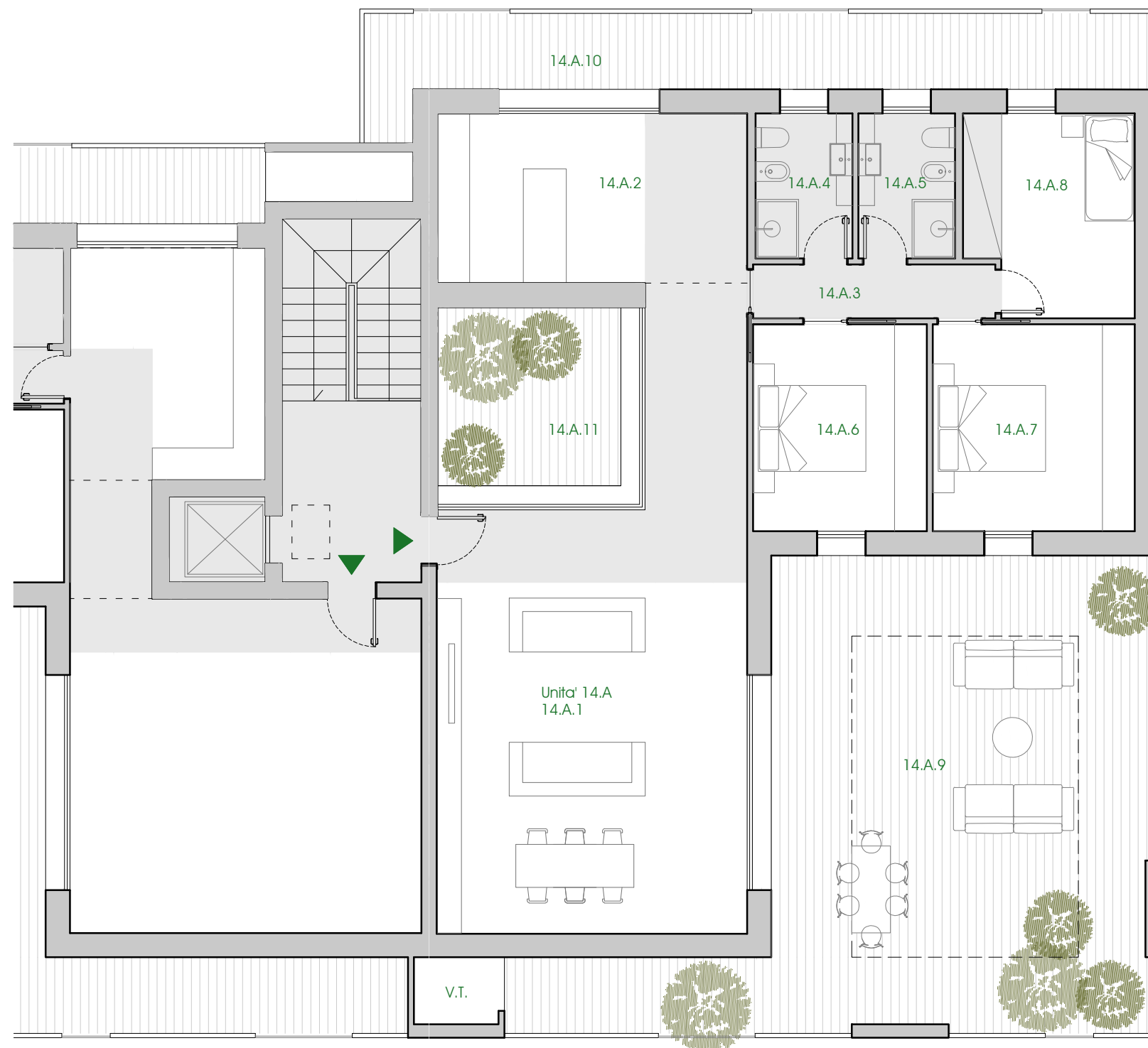
EDIFICIO 1



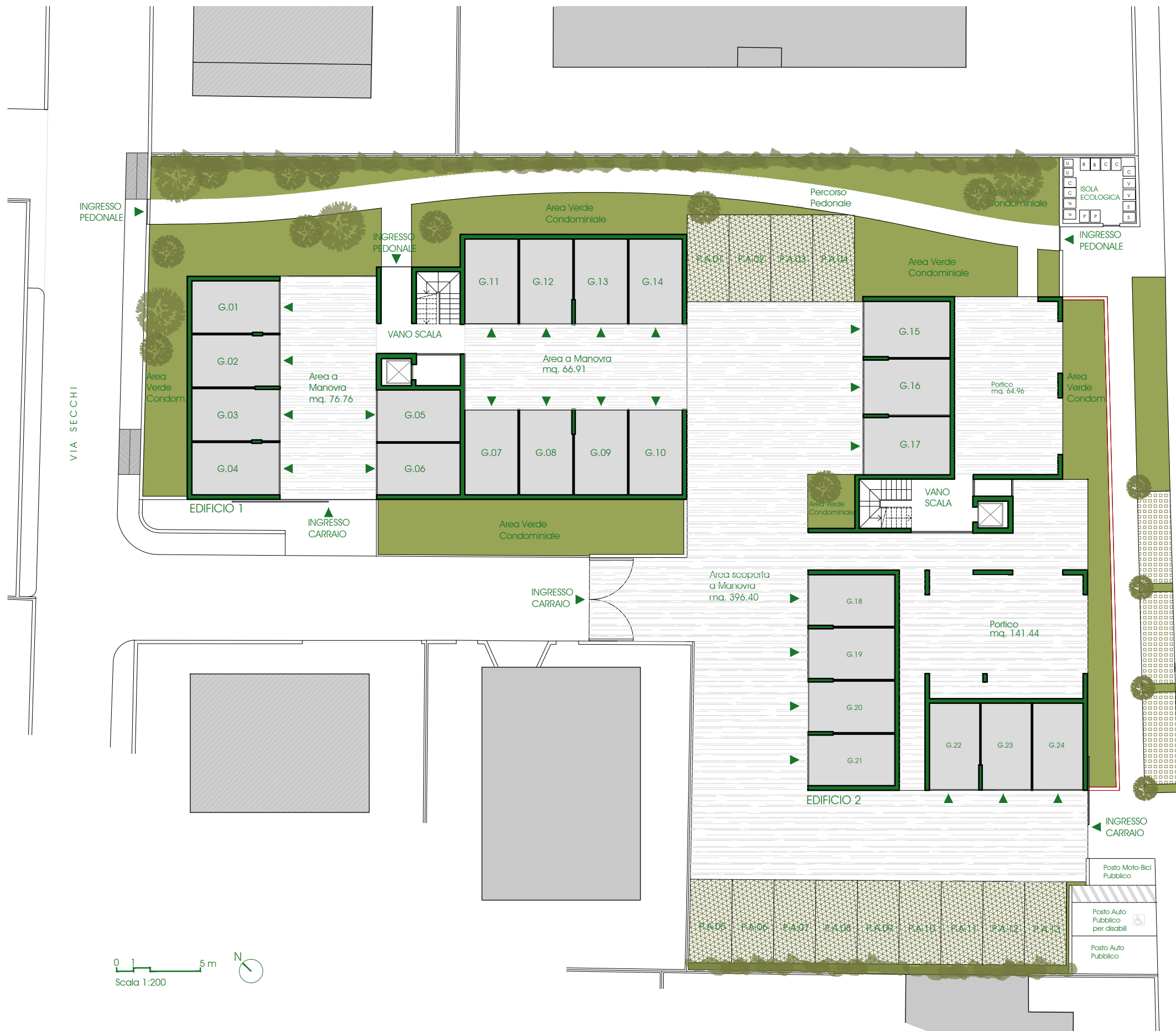
DATI METRICI UNITA' 14.A

14.A.1	zona giorno	56.18 mq
14.A.2	cucina	18.18 mq
14.A.3	disimpegno	4.50 mq
14.A.4	bagno	4.85 mq
14.A.5	bagno	4.85 mq
14.A.6	camera	12.47 mq
14.A.7	camera	14.49 mq
14.A.8	camera	11.37 mq
SUPERFICIE CALPESTABILE		124.12 mq
14.A.9	terrazzo	70.52 mq
14.A.10	terrazzo	21.90 mq
14.A.11	cavedio	11.33 mq
SUPERFICIE COMMERCIALE		218.35 mq

PORZIONE DI UNITA' IMMOBILIARE CON ALTEZZA 2,40



Piano ATTICO - EDIFICIO 1



DATI METRICI GARAGES - PIANO TERRA - EDIFICIO 2

	SUPERFICIE CALPESTABILE	SUPERFICIE COMM.LE
G.15	17.12 mq	10.11 mq
G.16	17.12 mq	9.44 mq
G.17	17.69 mq	9.99 mq
G.18	15.75 mq	9.40 mq
G.19	15.75 mq	8.73 mq
G.20	15.75 mq	8.73 mq
G.21	15.75 mq	9.36 mq
G.22	15.32 mq	9.08 mq
G.23	15.32 mq	8.43 mq
G.24	15.32 mq	9.08 mq
TOTALE	160.89 mq	92.35 mq

DATI METRICI - PIANO TERRA - POSTI AUTO

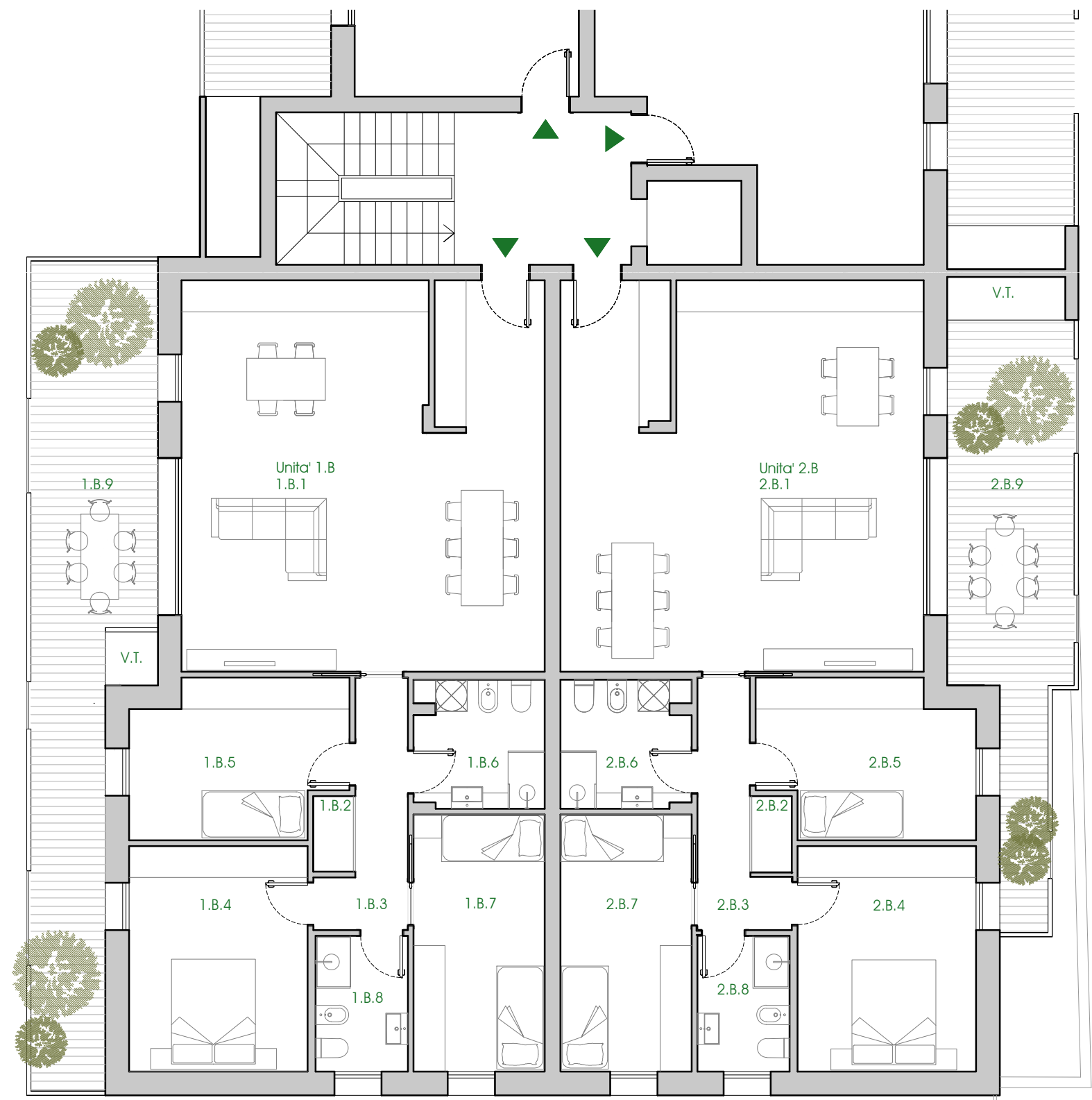
	SUPERFICIE COMMERCIALE
P.A.01	13.00 mq
P.A.02	13.00 mq
P.A.03	13.00 mq
P.A.04	13.00 mq
P.A.05	12.50 mq
P.A.06	12.50 mq
P.A.07	12.50 mq
P.A.08	12.50 mq
P.A.09	12.50 mq
P.A.10	12.50 mq
P.A.11	12.50 mq
P.A.12	12.50 mq
P.A.13	12.50 mq
P.A.14	12.50 mq
P.A.15	12.50 mq
TOTALE	189.50 mq



EDIFICIO 2



Scala 1:100



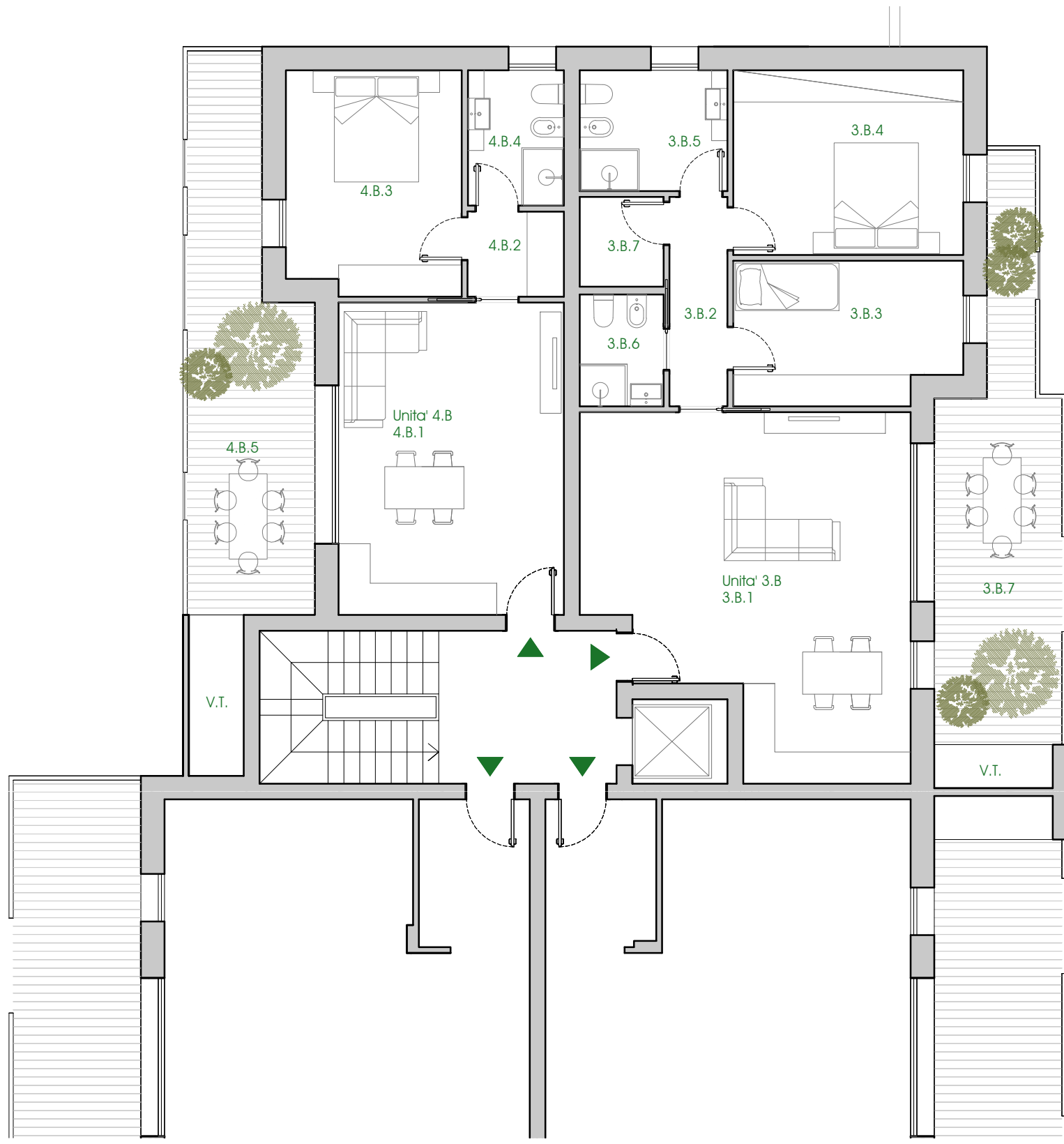
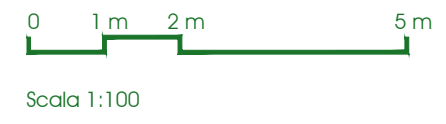
Piano PRIMO- EDIFICIO 1

DATI METRICI UNITA' 1B

1.B.1	zona giorno	51.24 mq
1.B.2	ripostiglio	1.10 mq
1.B.3	disimpegno	5.60 mq
1.B.4	camera	14.64 mq
1.B.5	camera	11.67 mq
1.B.6	bagno	6.00 mq
1.B.7	camera	12.24 mq
1.B.8	bagno	4.55 mq
SUPERFICIE CALPESTABILE		108.19 mq
1.B.9	terrazzo	29.45 mq
SUPERFICIE COMMERCIALE		150.36 mq

DATI METRICI UNITA' 2B

2.B.1	zona giorno	51.20 mq
2.B.2	ripostiglio	1.10 mq
2.B.3	disimpegno	5.60 mq
2.B.4	camera	14.64 mq
2.B.5	camera	11.67 mq
2.B.6	bagno	6.00 mq
2.B.7	camera	12.24 mq
2.B.8	bagno	4.55 mq
SUPERFICIE CALPESTABILE		108.15 mq
2.B.9	terrazzo	21.17 mq
SUPERFICIE COMMERCIALE		147.63 mq



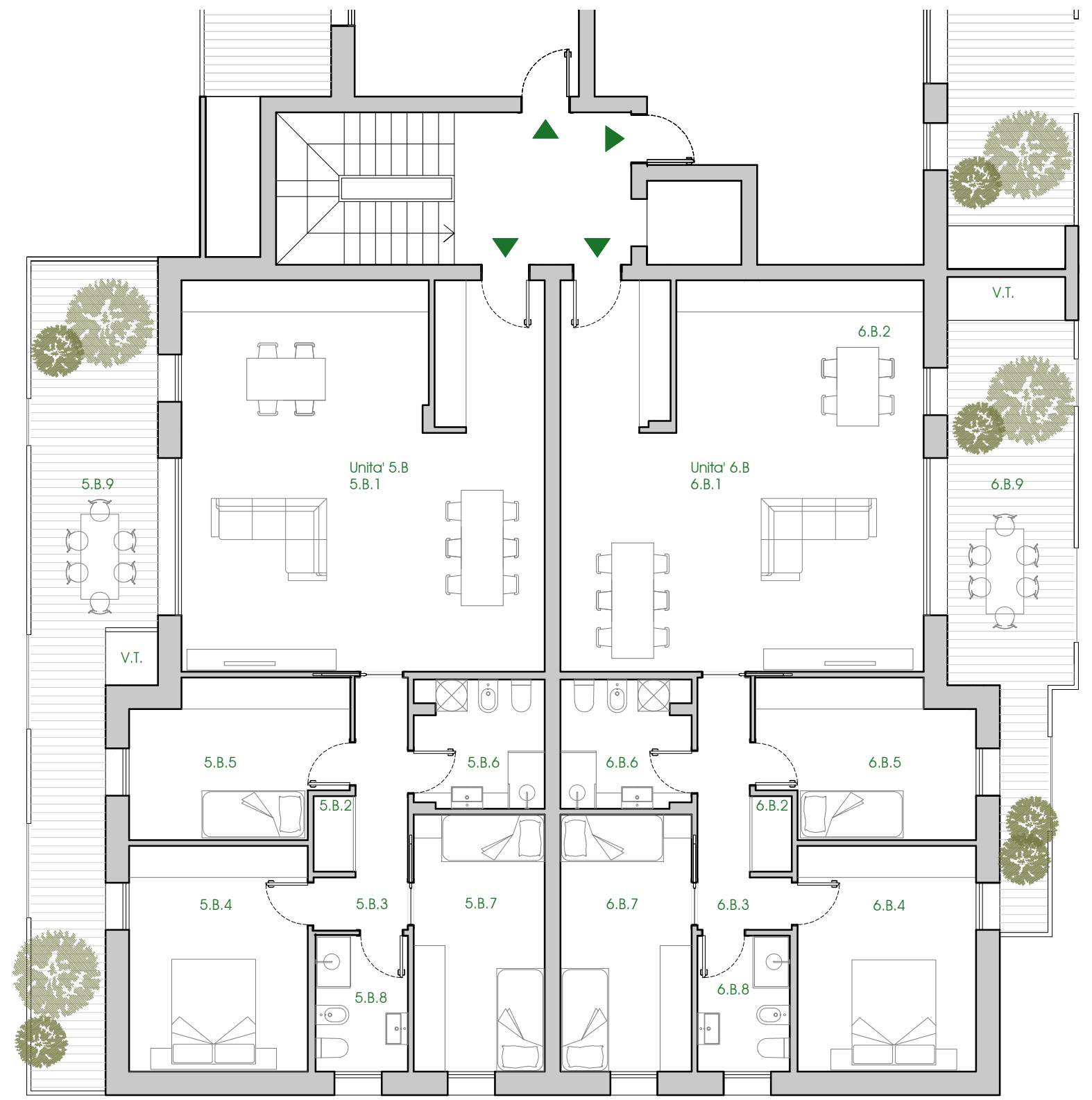
DATI METRICI UNITA' 3B

3.B.1	zona giorno	37.00 mq
3.B.2	disimpegno	4.36 mq
3.B.3	camera	11.44 mq
3.B.4	camera	15.30 mq
3.B.5	bagno	6.40 mq
3.B.6	bagno	3.37 mq
3.B.7	ripostiglio	2.70 mq
SUPERFICIE CALPESTABILE		80.57 mq
3.B.7	terrazzo	20.20 mq
SUPERFICIE COMMERCIALE		114.20 mq

DATI METRICI UNITA' 4B

4.B.1	zona giorno	25.30 mq
4.B.2	disimpegno	2.90 mq
4.B.3	camera	14.01 mq
4.B.4	bagno	4.65 mq
SUPERFICIE CALPESTABILE		46.86 mq
4.B.5	terrazzo	21.10 mq
SUPERFICIE COMMERCIALE		73.67 mq

Piano PRIMO - EDIFICIO 2



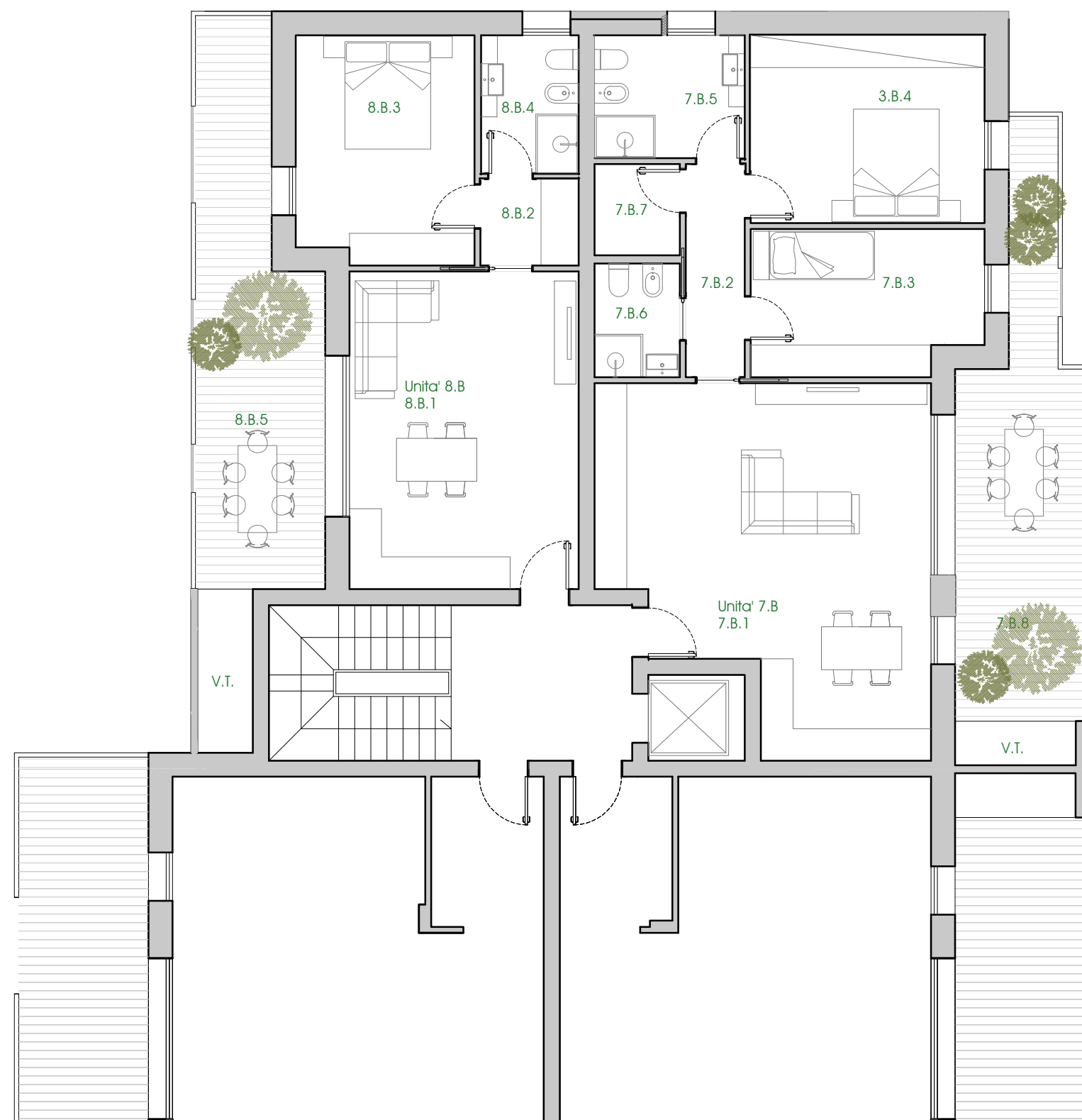
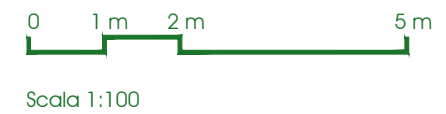
Piano SECONDO- EDIFICIO 2

DATI METRICI UNITA' 5B

5.B.1	zona giorno	51.24 mq
5.B.2	ripostiglio	1.10 mq
5.B.3	disimpegno	5.60 mq
5.B.4	camera	14.64 mq
5.B.5	camera	11.67 mq
5.B.6	bagno	6.00 mq
5.B.7	camera	12.24 mq
5.B.8	bagno	4.55 mq
SUPERFICIE CALPESTABILE		108.19 mq
5.B.9	terrazzo	27.87 mq
SUPERFICIE COMMERCIALE		150.36 mq

DATI METRICI UNITA' 6B

6.B.1	zona giorno	51.20 mq
6.B.2	ripostiglio	1.10 mq
6.B.3	disimpegno	5.60 mq
6.B.4	camera	14.64 mq
6.B.5	camera	11.67 mq
6.B.6	bagno	6.00 mq
6.B.7	camera	12.24 mq
6.B.8	bagno	4.55 mq
SUPERFICIE CALPESTABILE		108.15 mq
6.B.9	terrazzo	21.17 mq
SUPERFICIE COMMERCIALE		147.71 mq



DATI METRICI UNITA' 7B

7.B.1	zona giorno	37.00 mq
7.B.2	disimpegno	4.36 mq
7.B.3	camera	11.44 mq
7.B.4	camera	15.30 mq
7.B.5	bagno	6.40 mq
7.B.6	bagno	3.37 mq
7.B.7	ripostiglio	2.70 mq
SUPERFICIE CALPESTABILE		80.57 mq
7.B.8	terrazzo	20.20 mq
SUPERFICIE COMMERCIALE		115.26 mq

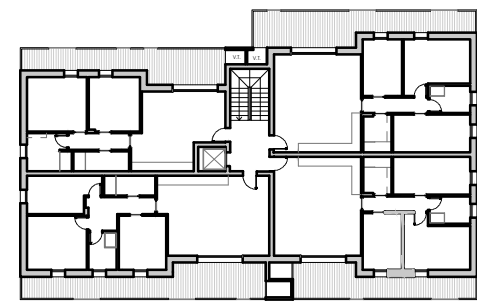
DATI METRICI UNITA' 8B

8.B.1	zona giorno	25.30 mq
8.B.2	disimpegno	2.90 mq
8.B.3	camera	14.01 mq
8.B.4	bagno	4.65 mq
SUPERFICIE CALPESTABILE		46.86 mq
8.B.5	terrazzo	21.10 mq
SUPERFICIE COMMERCIALE		73.21 mq

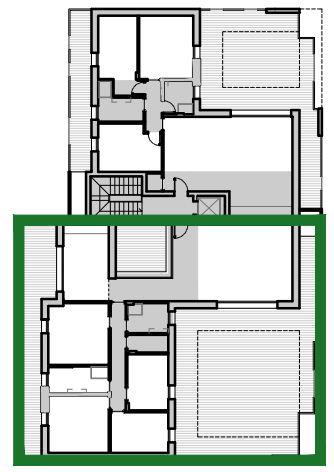
Piano SECONDO - EDIFICIO 2



Scala 1:100



EDIFICIO 2



DATI METRICI UNITA' 9.B

9.B.1	zona giorno	46.60 mq
9.B.2	cucina	15.21 mq
9.B.3	disimpegno	7.10 mq
9.B.4	camera	16.20 mq
9.B.5	bagno	7.15 mq
9.B.6	camera	15.21 mq
9.B.7	camera	10.24 mq
9.B.8	camera	10.00 mq
9.B.9	ripostiglio	3.20 mq
9.B.10	bagno	5.40 mq
SUPERFICIE CALPESTABILE		136.31 mq
9.B.11	terrazzo	95.10 mq
9.B.12	terrazzo	27.74 mq
9.B.13	cavedio	10.34 mq
SUPERFICIE COMMERCIALE		233.84 mq

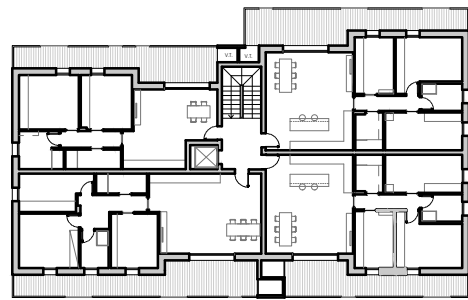
■ PORZIONE DI UNITA' IMMOBILIARE CON ALTEZZA 2,40

Piano ATTICO - EDIFICIO 2

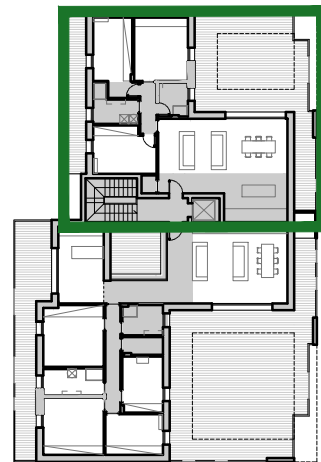
0 1 m 2 m 5 m



Scala 1:100



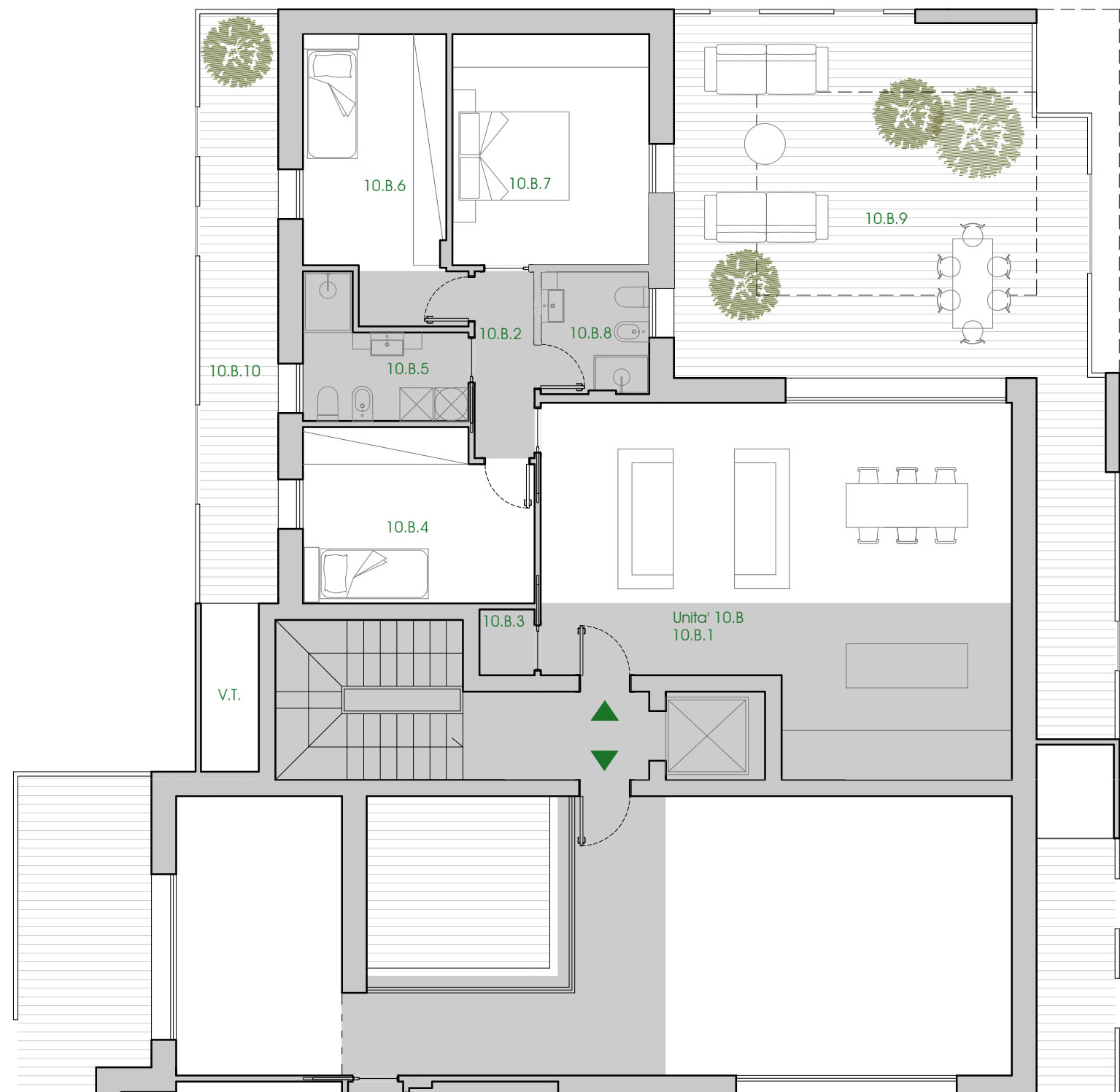
EDIFICIO 2



DATI METRICI UNITA' 10.B

10.B.1	zona giorno	50,00 mq
10.B.2	disimpegno	3,68 mq
10.B.3	ripostiglio	1,20 mq
10.B.4	camera	12,60 mq
10.B.5	bagno	5,80 mq
10.B.6	camera	13,00 mq
10.B.7	camera	14,95 mq
10.B.8	bagno	4,36 mq
SUPERFICIE CALPESTABILE		105,59 mq
10.B.9	terrazzo	56,33 mq
10.B.10	terrazzo	15,18 mq
SUPERFICIE COMMERCIALE		169,99 mq

PORZIONE DI UNITA' IMMOBILIARE CON ALTEZZA 2,40



Piano ATTICO - EDIFICIO 2