

VIA

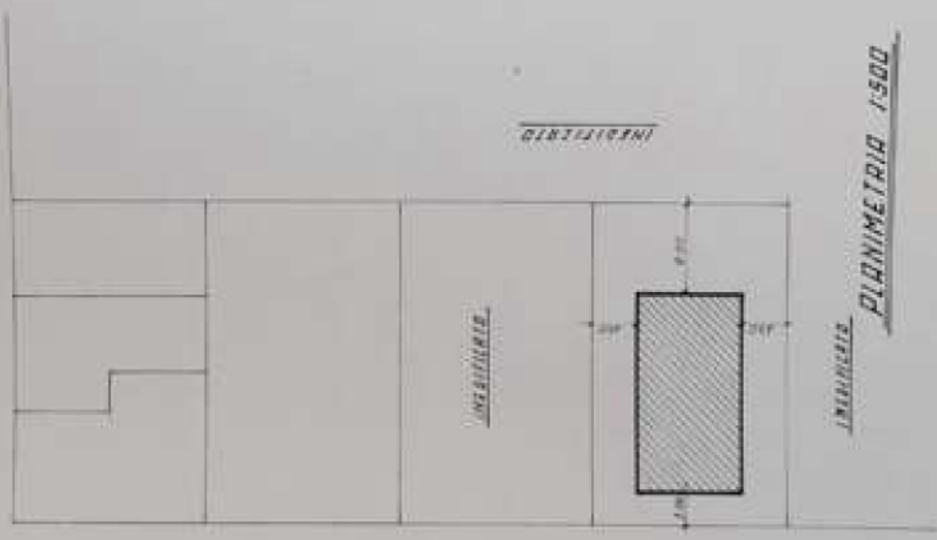
LATINA

VIA NARDI

INDICAZIONE

INDICAZIONE

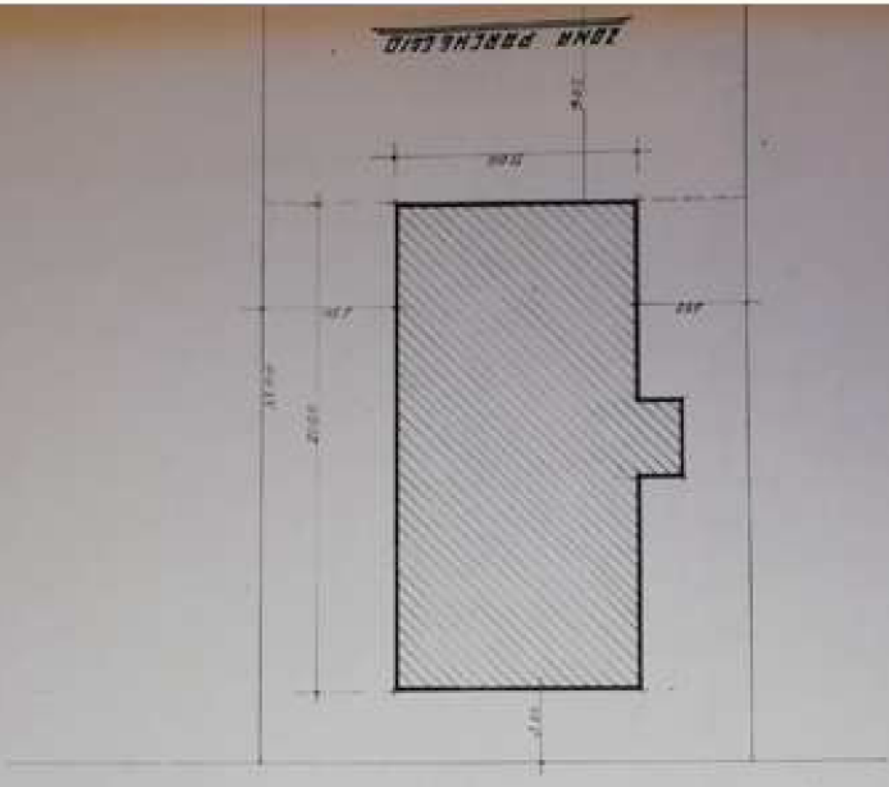
PLANIMETRIA 1:500



VIA NARDI

INDICAZIONE

PLANIMETRIA 1:200



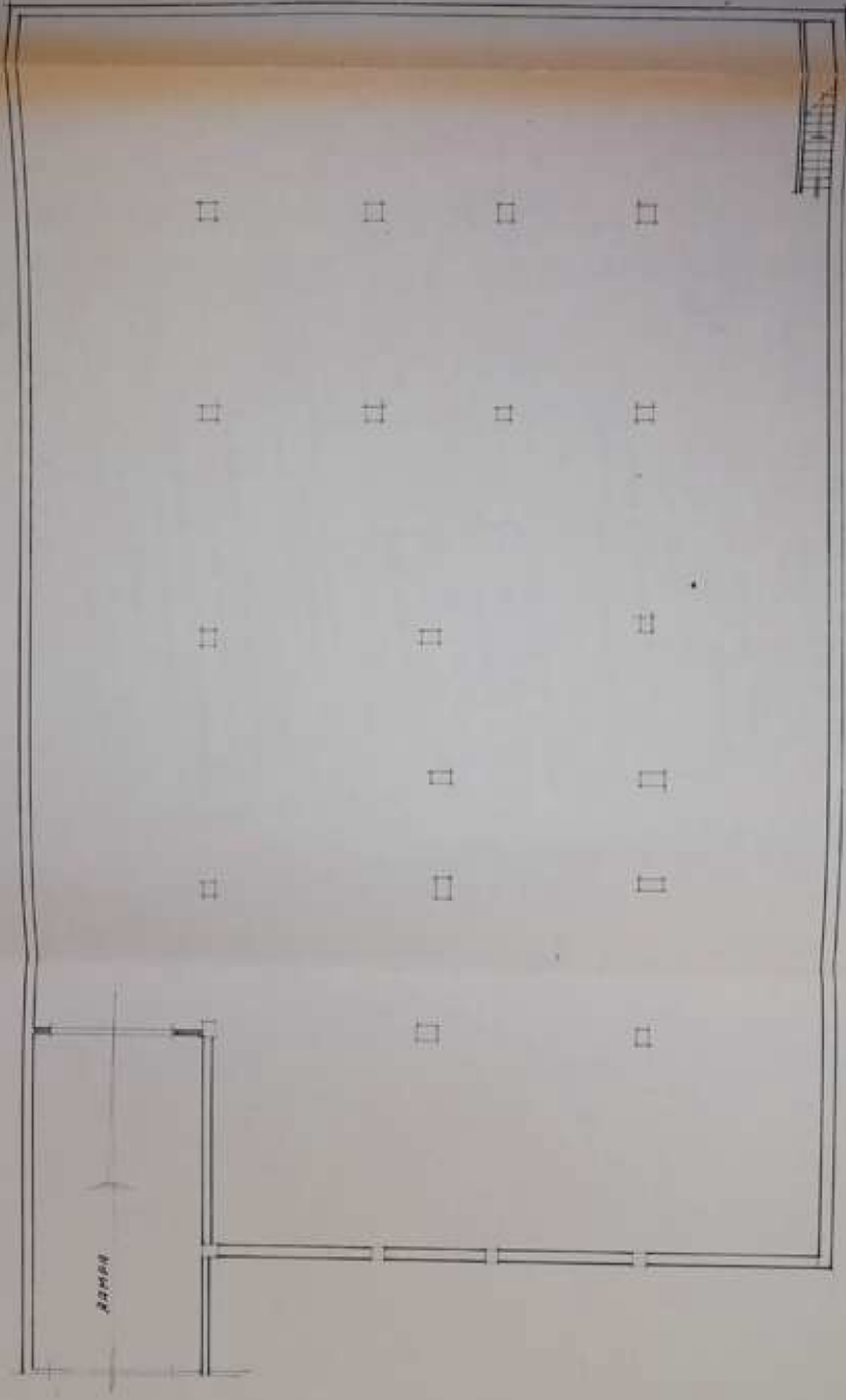
DESTINAZIONE DI P.R.
ESTENSIVO DI 1°

DATI DI PROGETTO QUORIZZATI		
SUPERFICIE LOTTO	2000,31.00	mq. 2000,00
1/4 SUPERFICIE STRADA	2000,00	" 120,00
Totale		
SUPERFICIE COPRIBILE	mq. 2000,00	mq. 212,00
SUPERFICIE COIBITA	2120,00	mq. 238,80
VOLUME COIBITATO	2000,00	ml. 2320,00
VOLUME PROGETTATO	mq. 2120,00	ml. 2552,88
PARALLELA		mq. 120,00
Superficie strada		mq. 120,00
Volume strada		ml. 144,00
Superficie verde		" 28,80
Volume verde		ml. 35,16
Totale		ml. 2825,64

DATI DI PROGETTO "INQUANTE"		
Superficie della	2000,31.00	mq. 2000,00
1/4 Superficie strada	2000,00	mq. 120,00
Totale		
Superficie coperta piano terra		mq. 238,80
" piano tipo		" 212,00
" piano sabb.		" 12,00
" verde		" 28,80
Volume piano terra	mq. 2000,00	ml. 2320,00
" piano tipo	312,00	" 374,40
" sabb.	12,00	" 14,40
" verde	35,16	" 42,19
Totale		ml. 2770,99



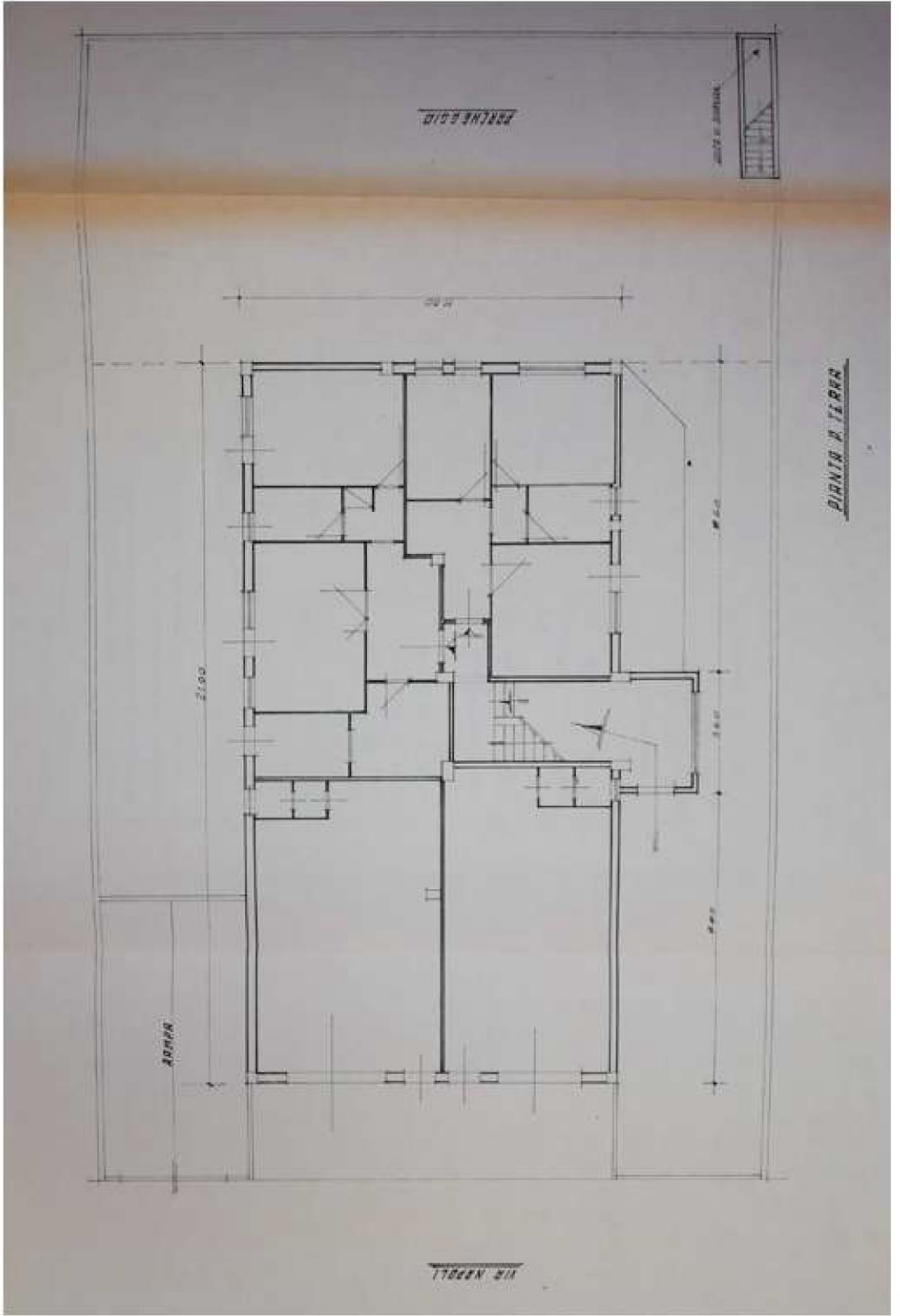
PLANIMETRIA 1:2000

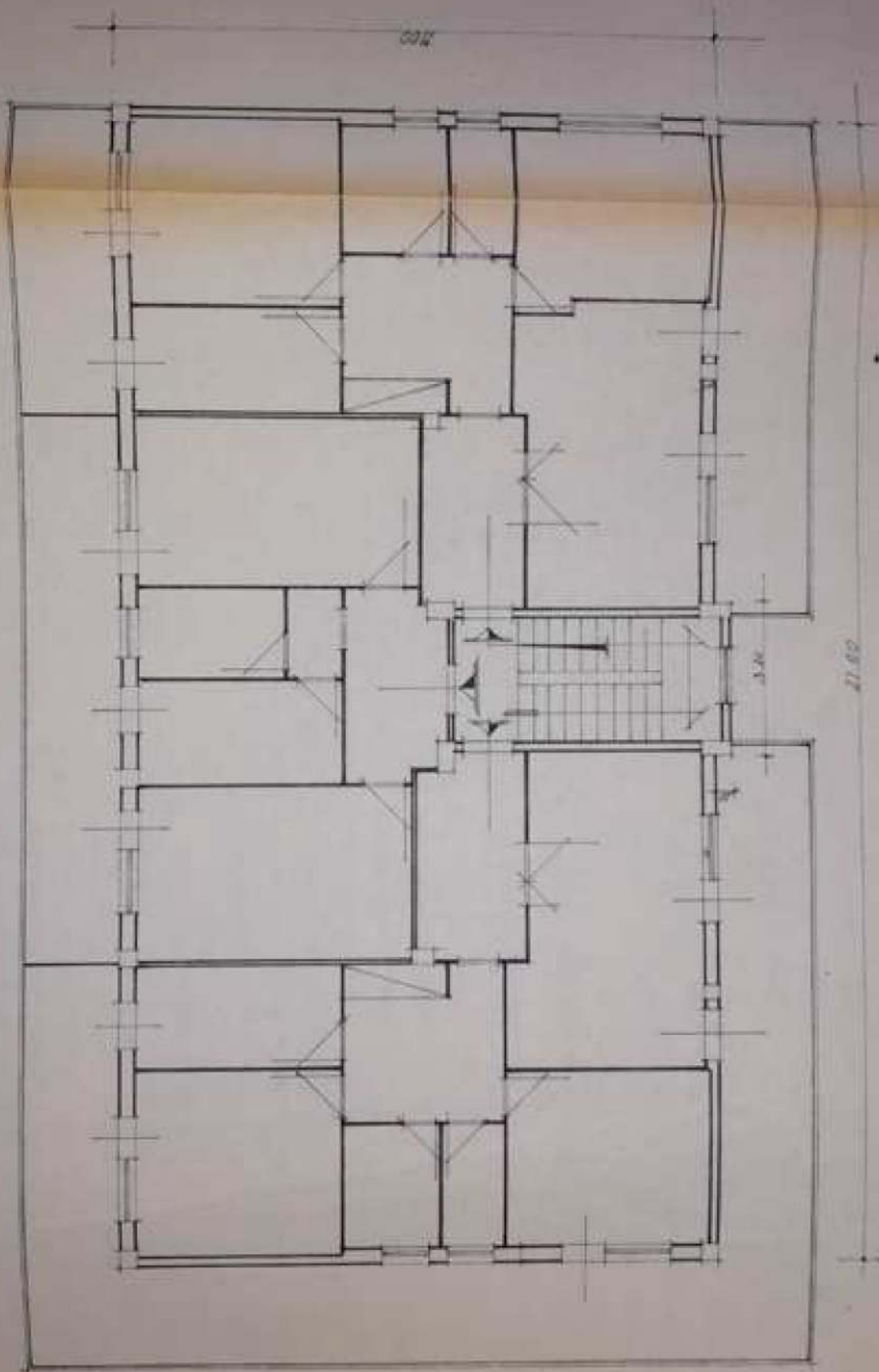


IN NAPOLI

PINIA PINO SCANTINO

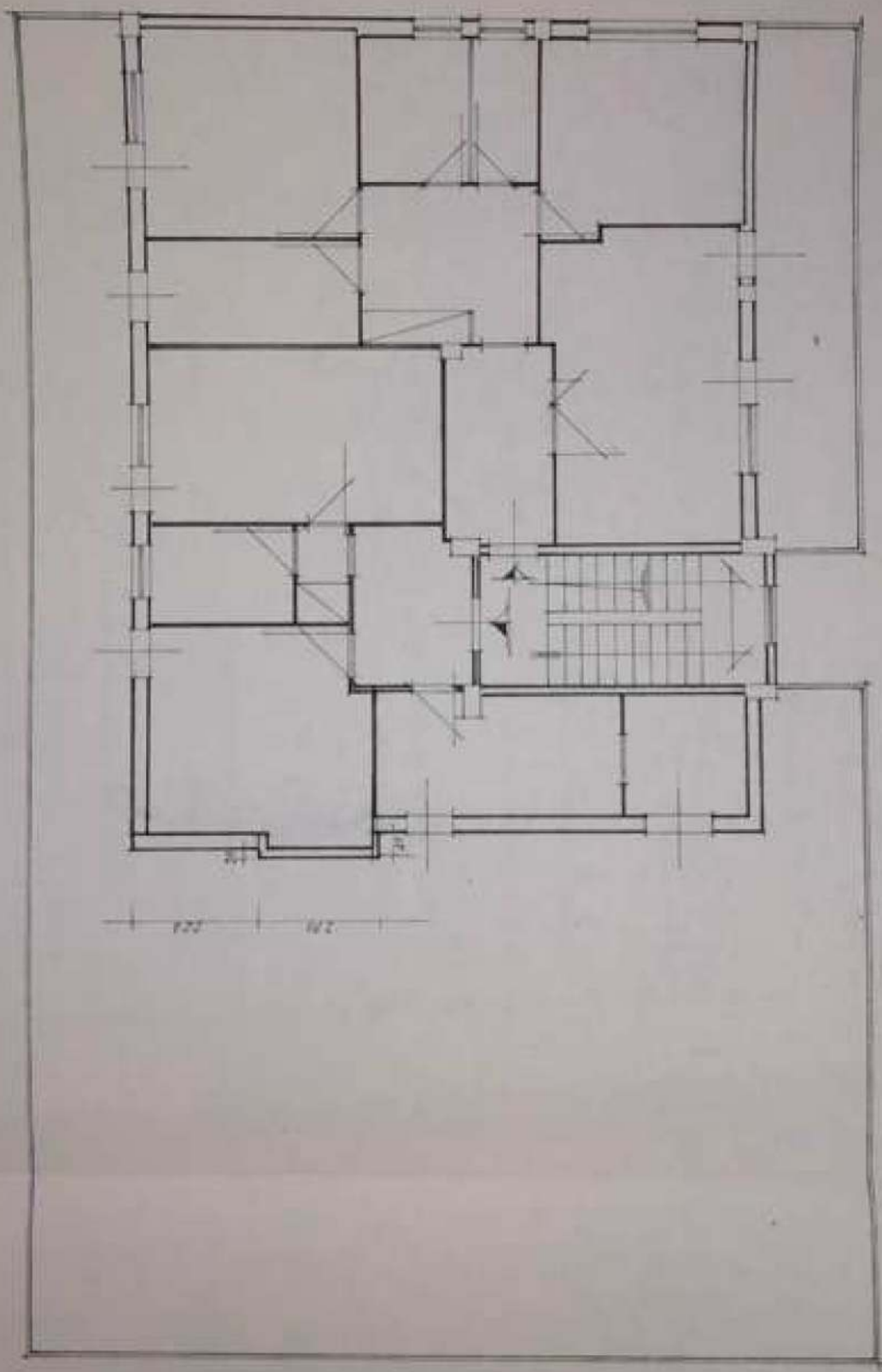






PIANTA P. TIPO

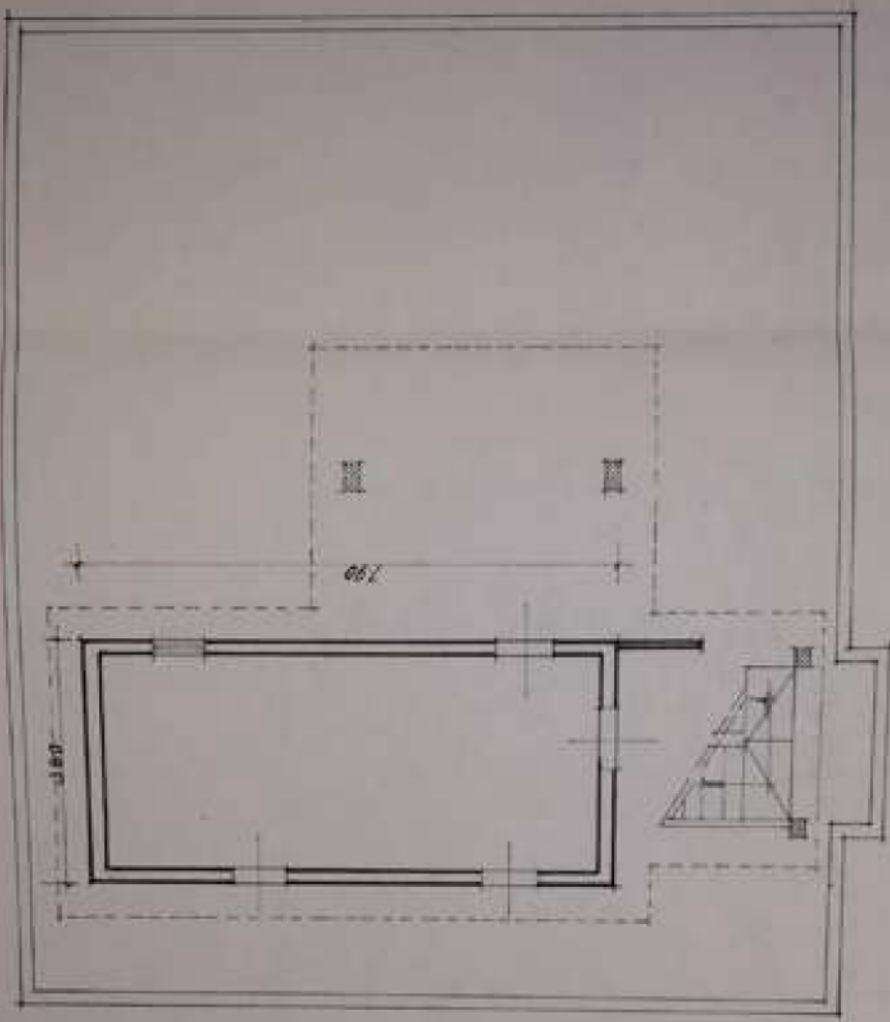




15.83

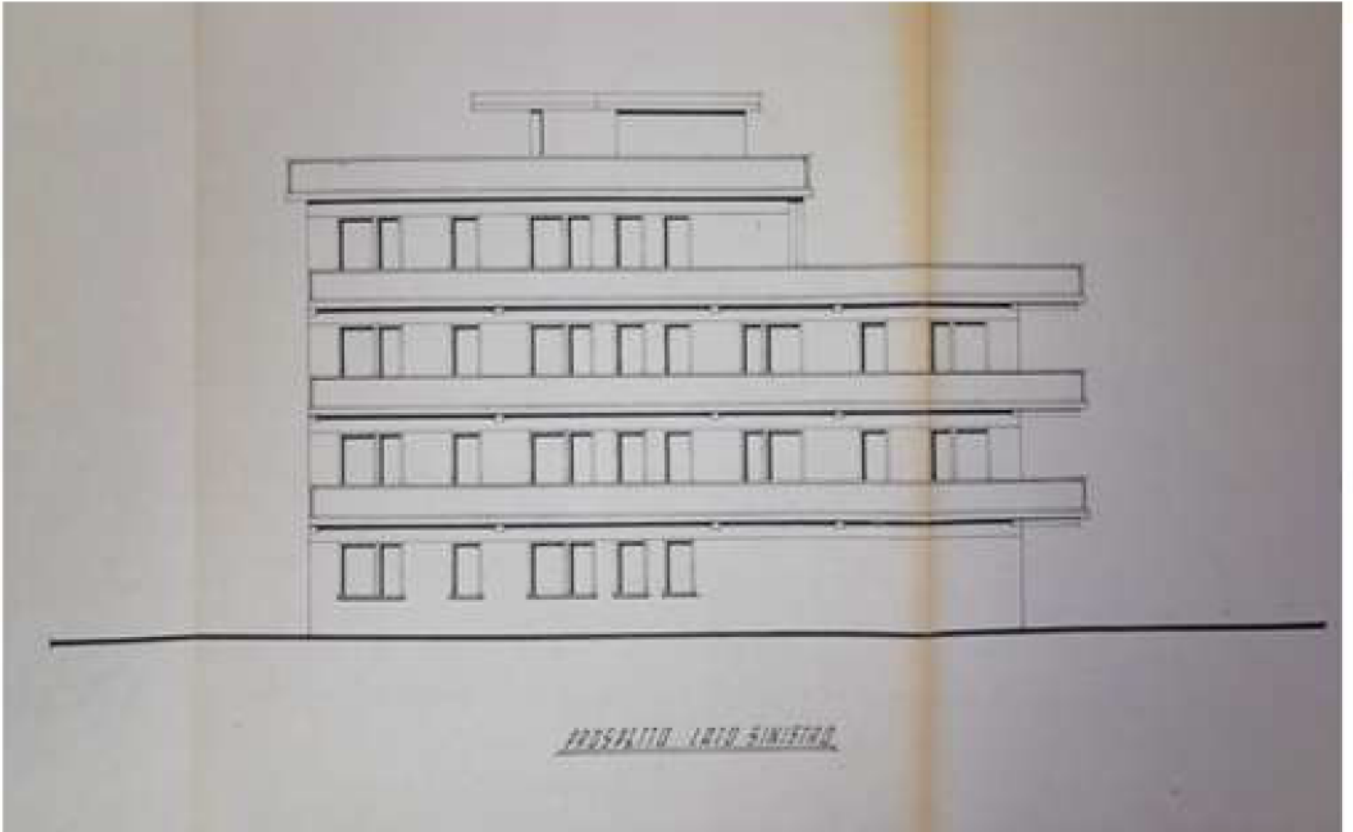
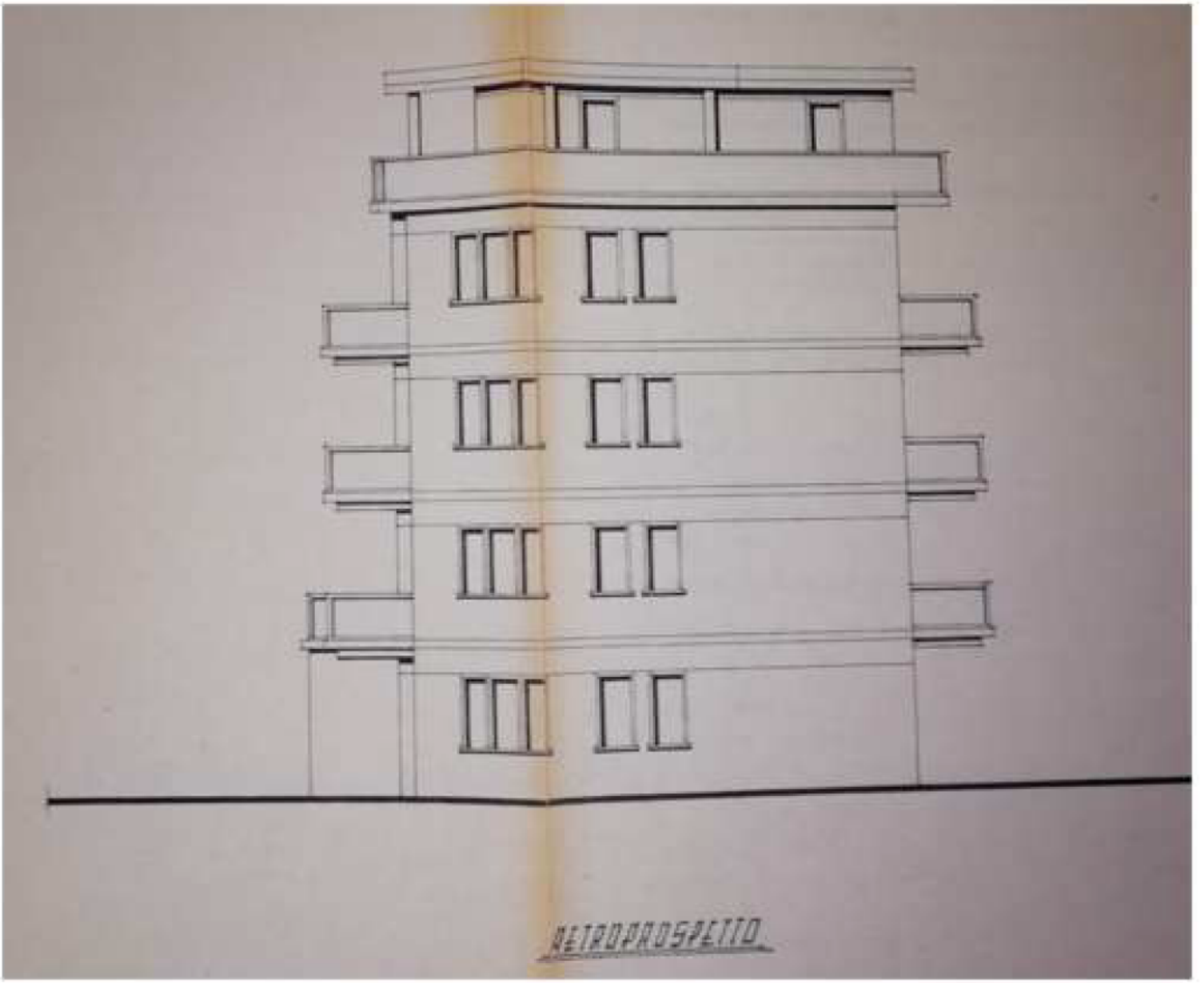
PIANTA P. ATTICO

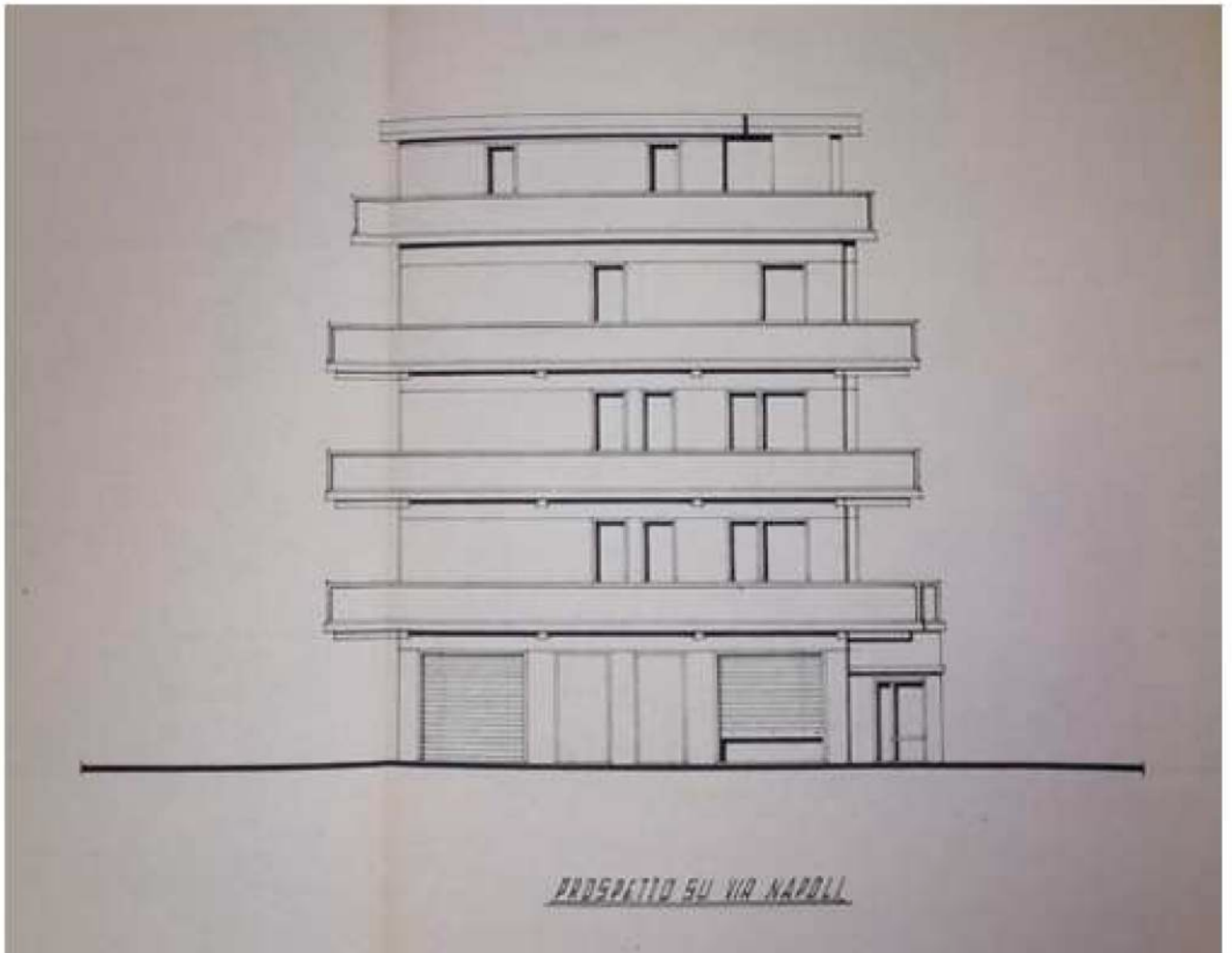
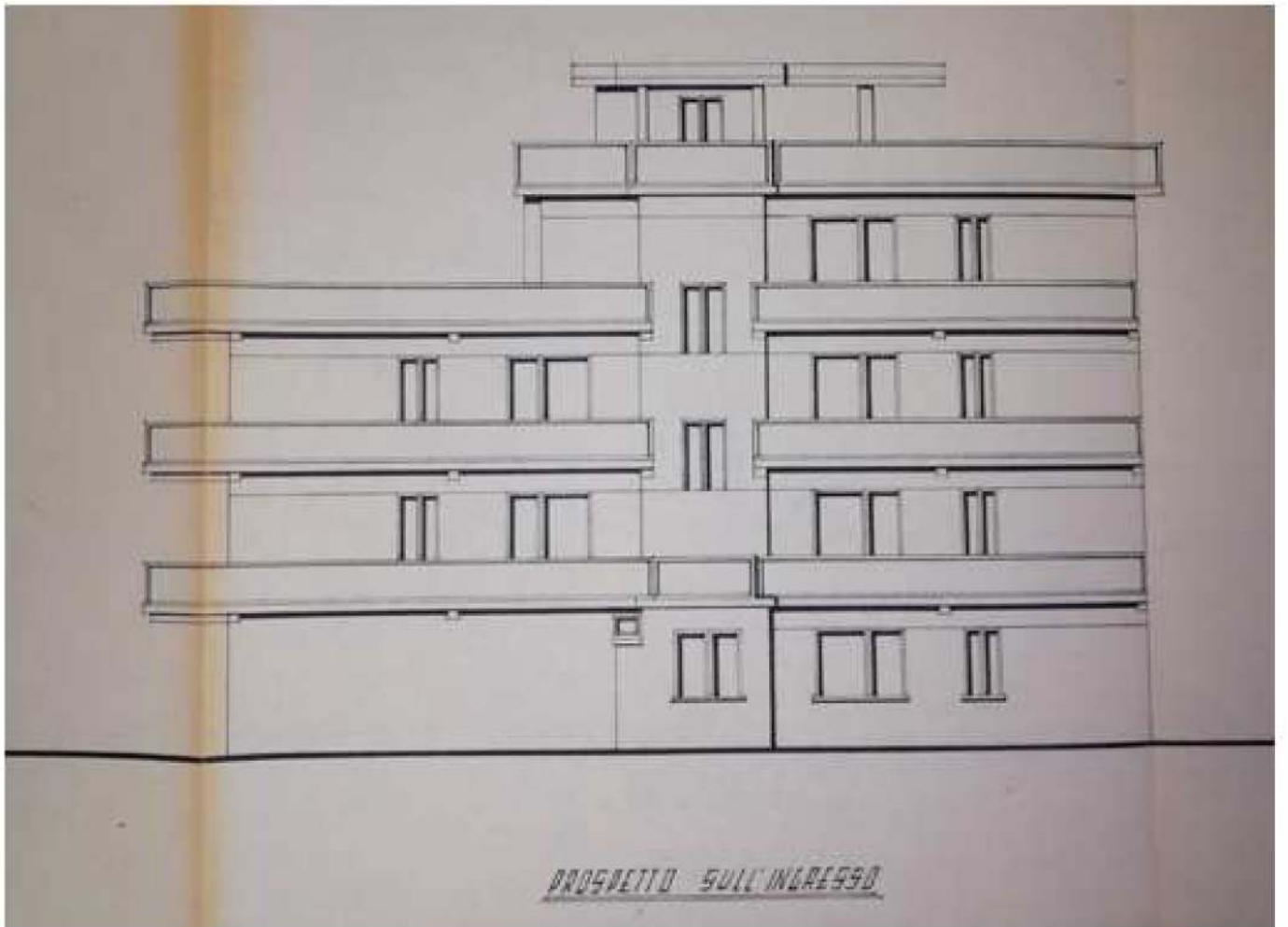


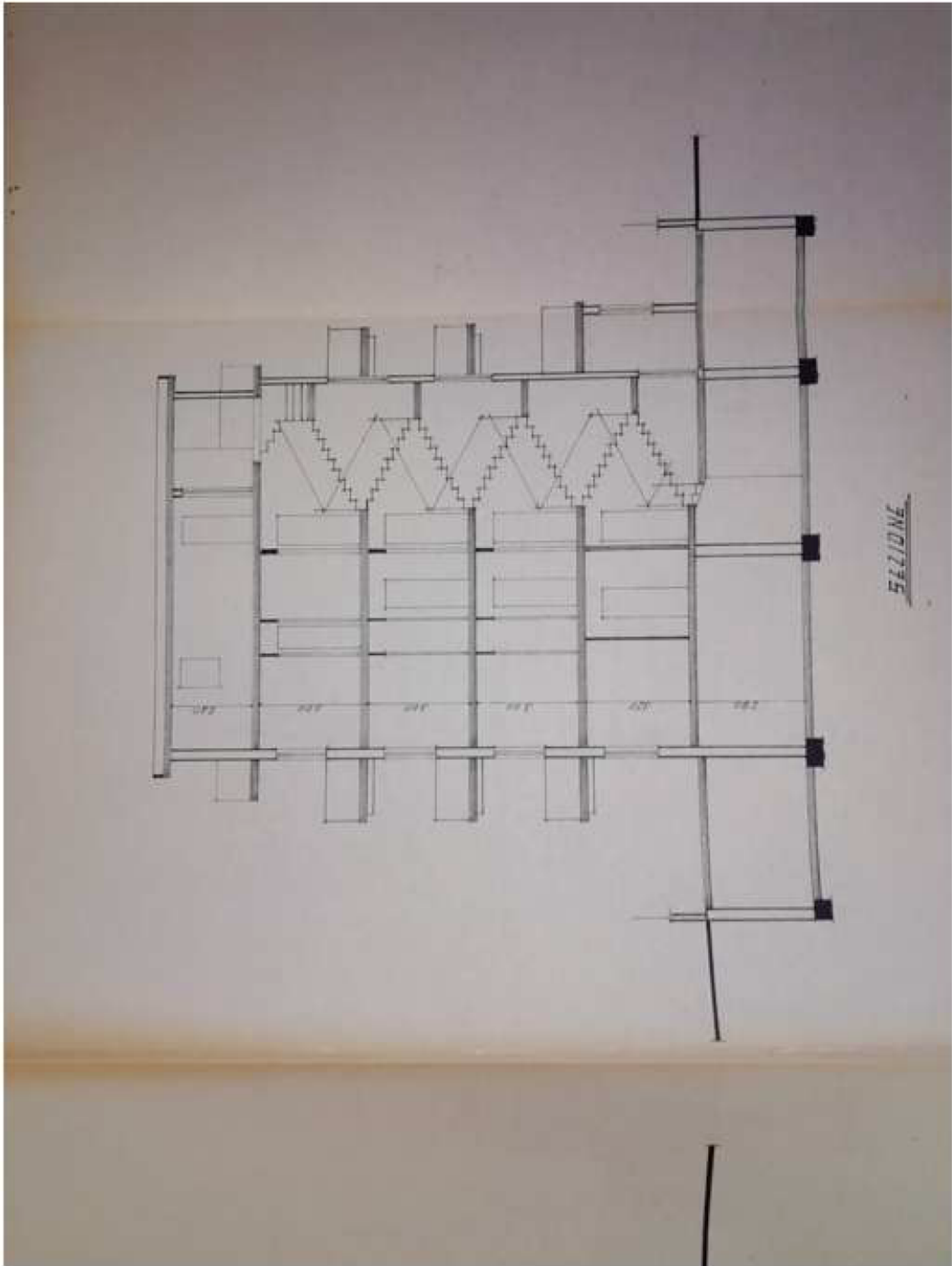


PIANTA P. SERVIZI









SEZIONE

