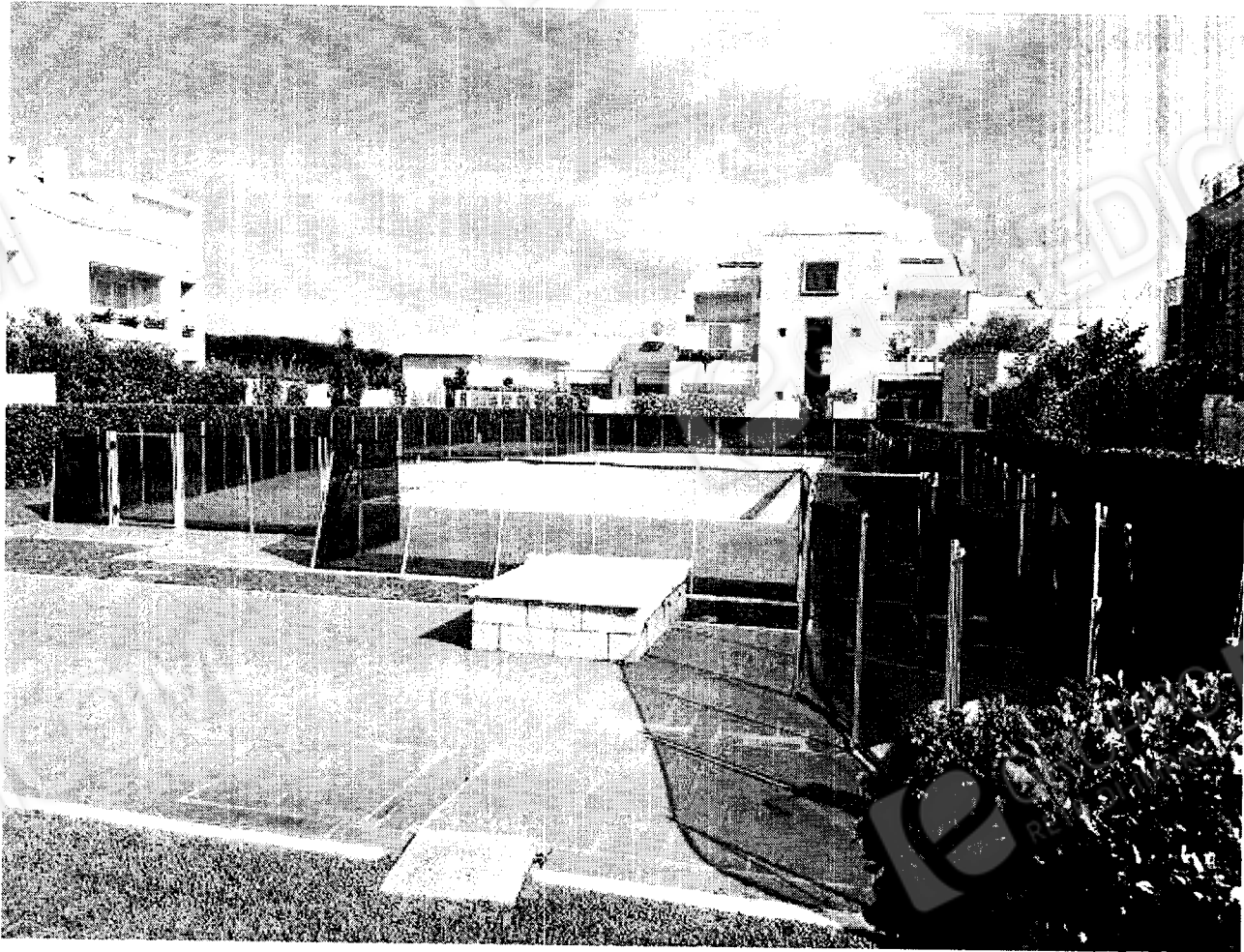


PISCINA CONDOMINIALE



PISCINA CONDOMINIALE



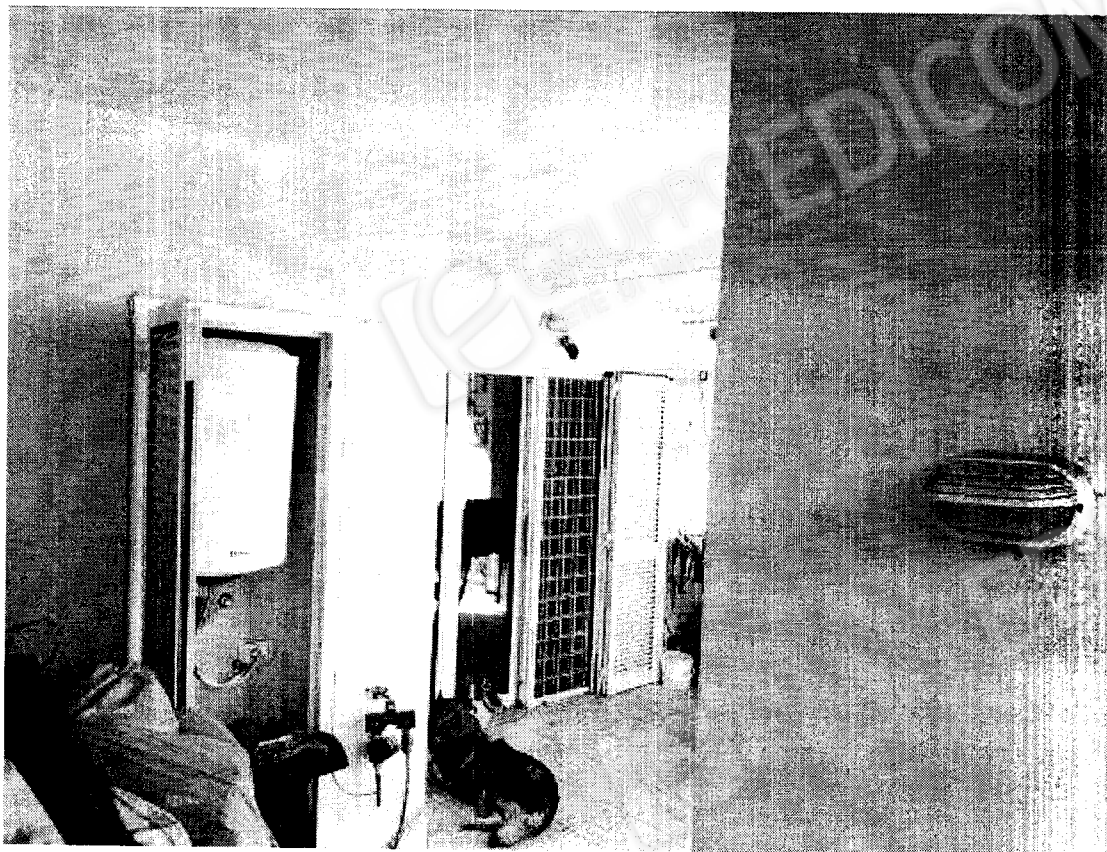


INGRESSO

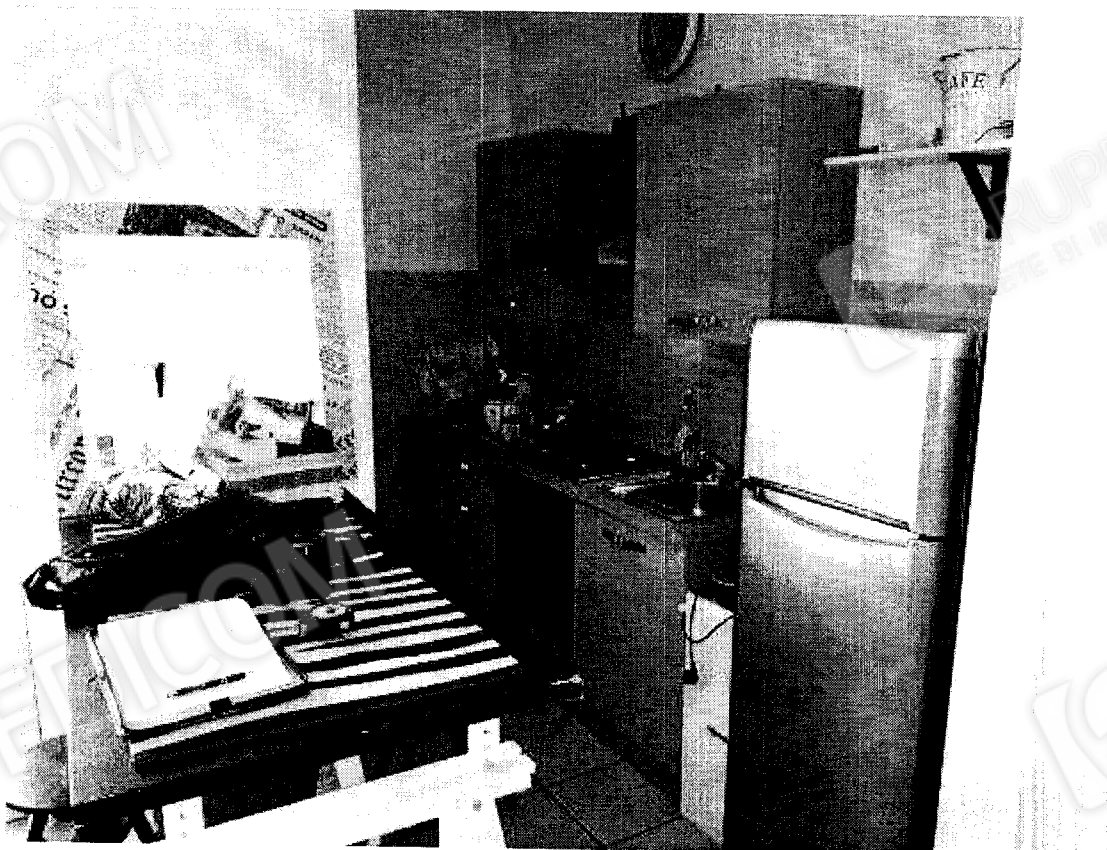


GIARDINO LATO MONTE



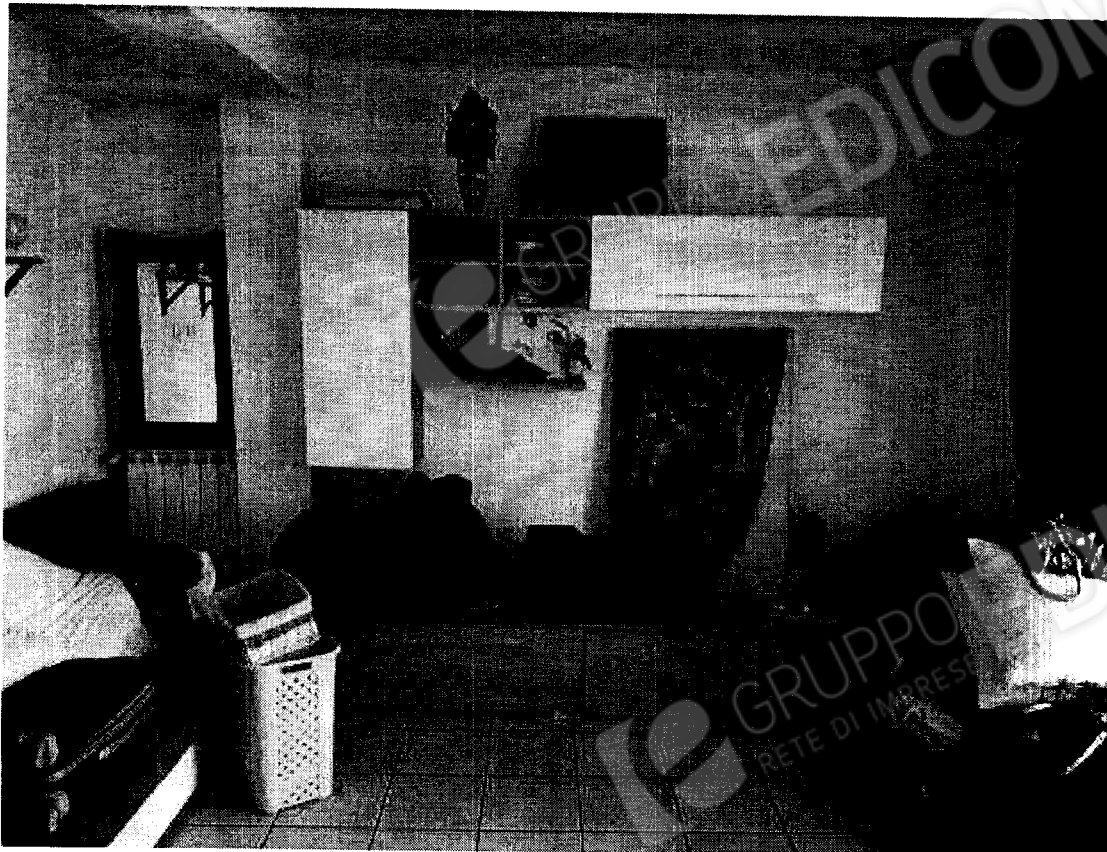


PORTICO LATO MONTE

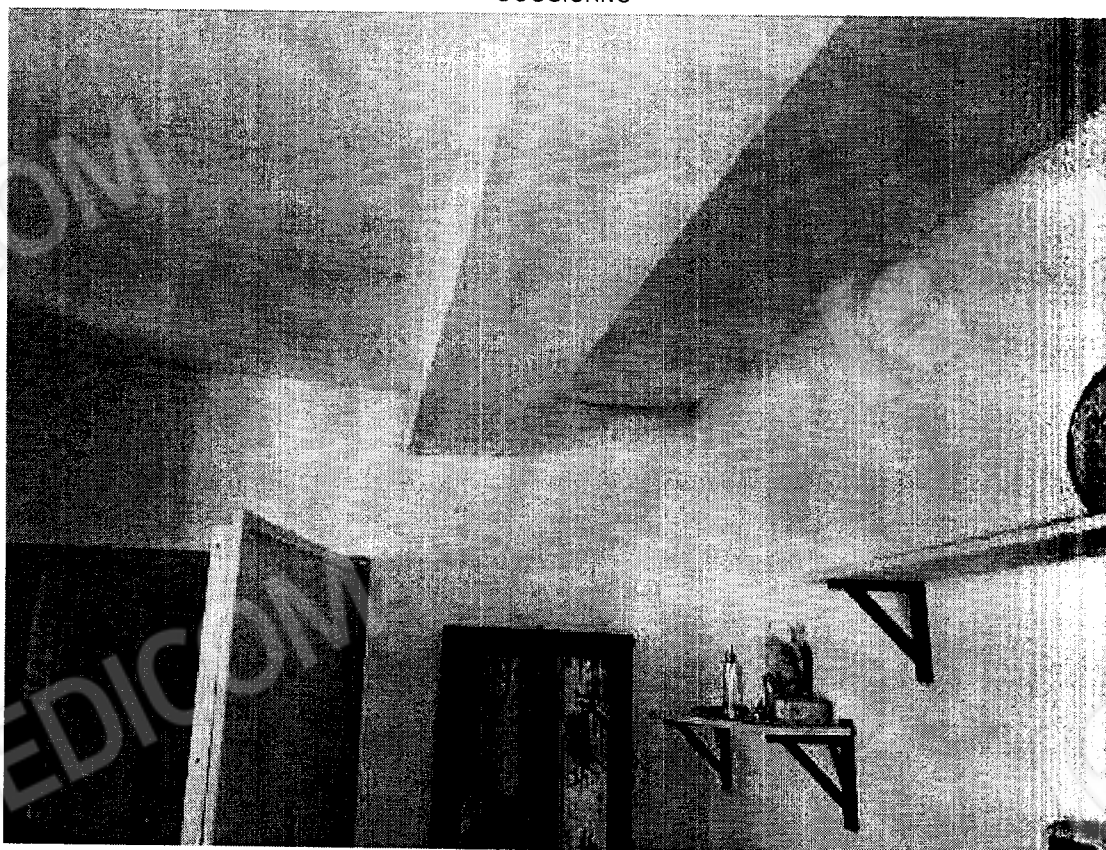


ANGOLO COTTURA





SOGGIORNO



SOGGIORNO (SEGNI DI MUFFA DIFFUSA)





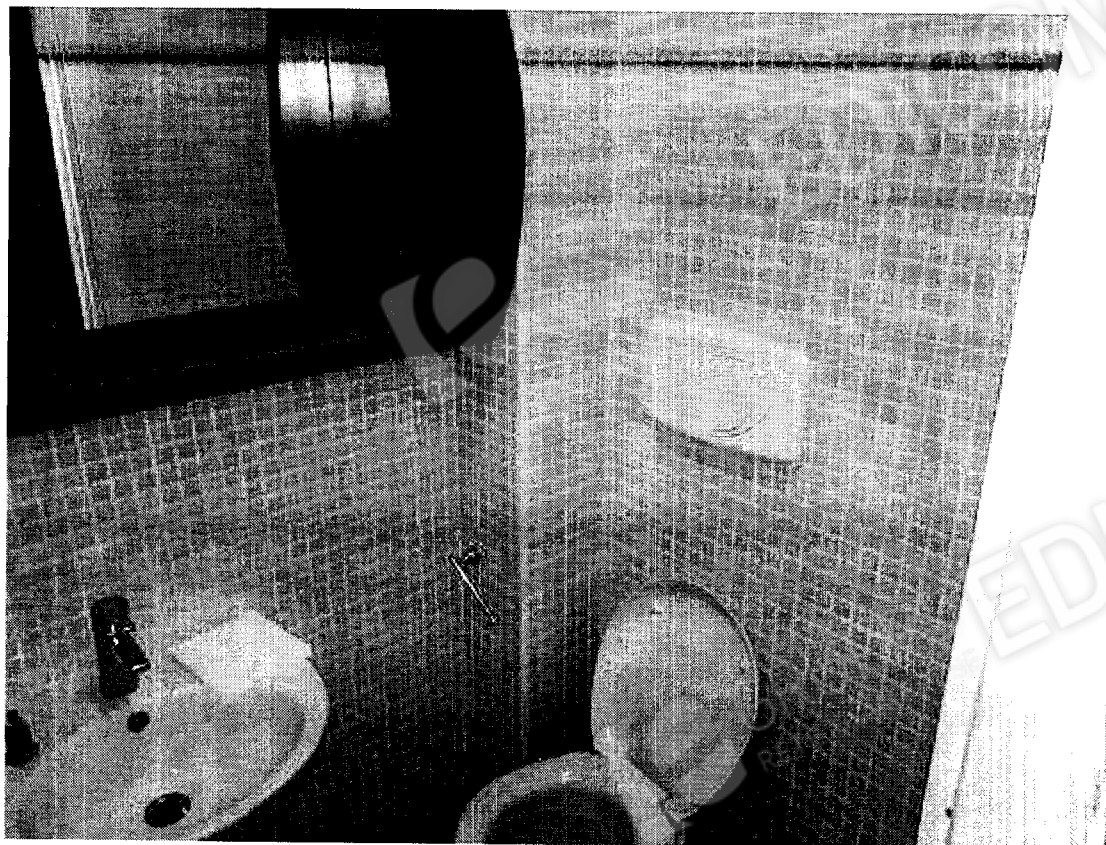
PORTICO LATO MONTE



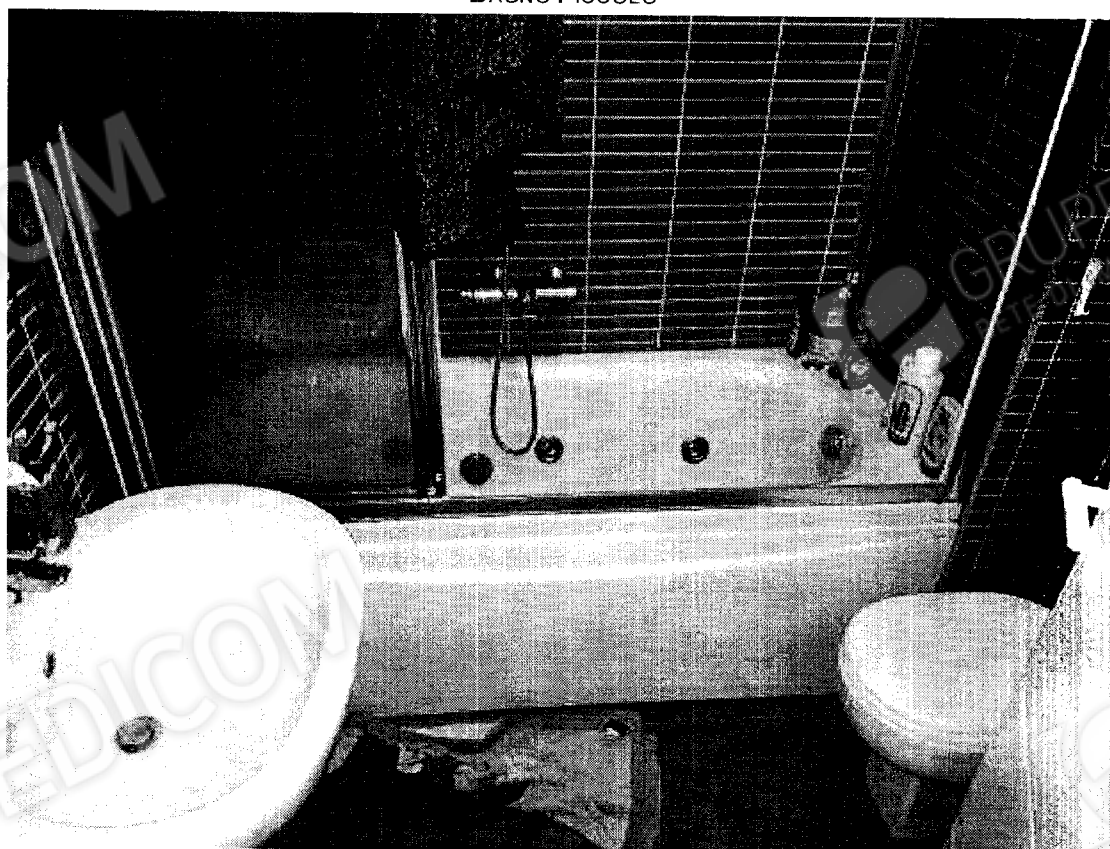
DISIMPEGNO



FRANCESCO DE RISI
INGEGNERE
VIA ATTILIO BANDIERA 1 - 00053 - CIVITAVECCHIA - ROMA - ITALIA
E-MAIL: DE.RISI@TISCALI.IT -
TEL. + 39 0766 20897 - FAX. +39 076 2270138 - CELL. +39 347 52718
N. 22233 ALBO INGEGNERI DELLA PROVINCIA DI ROMA



BAGNO PICCOLO

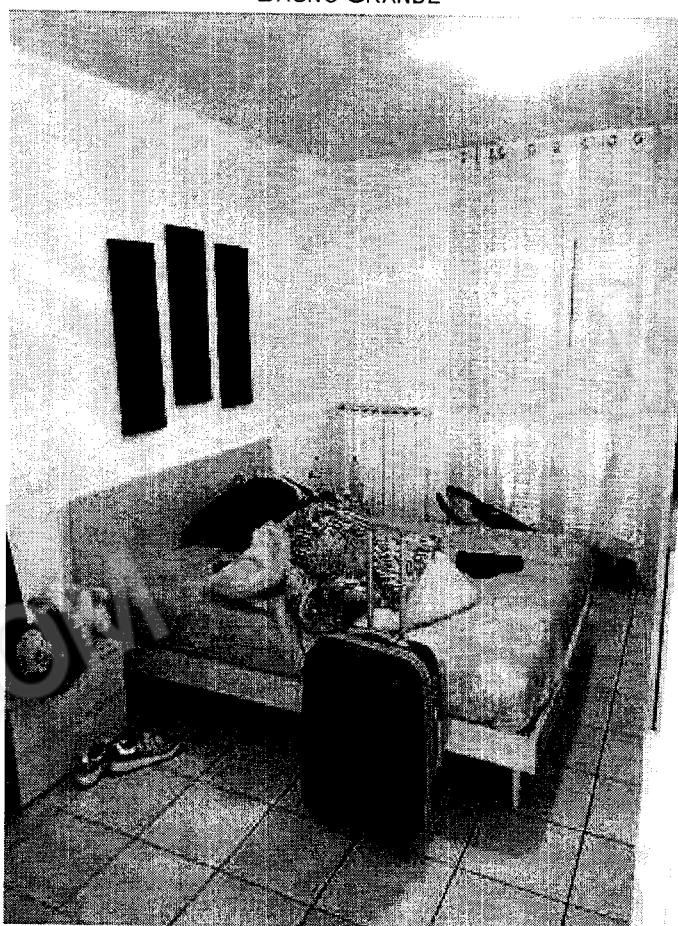


BAGNO GRANDE



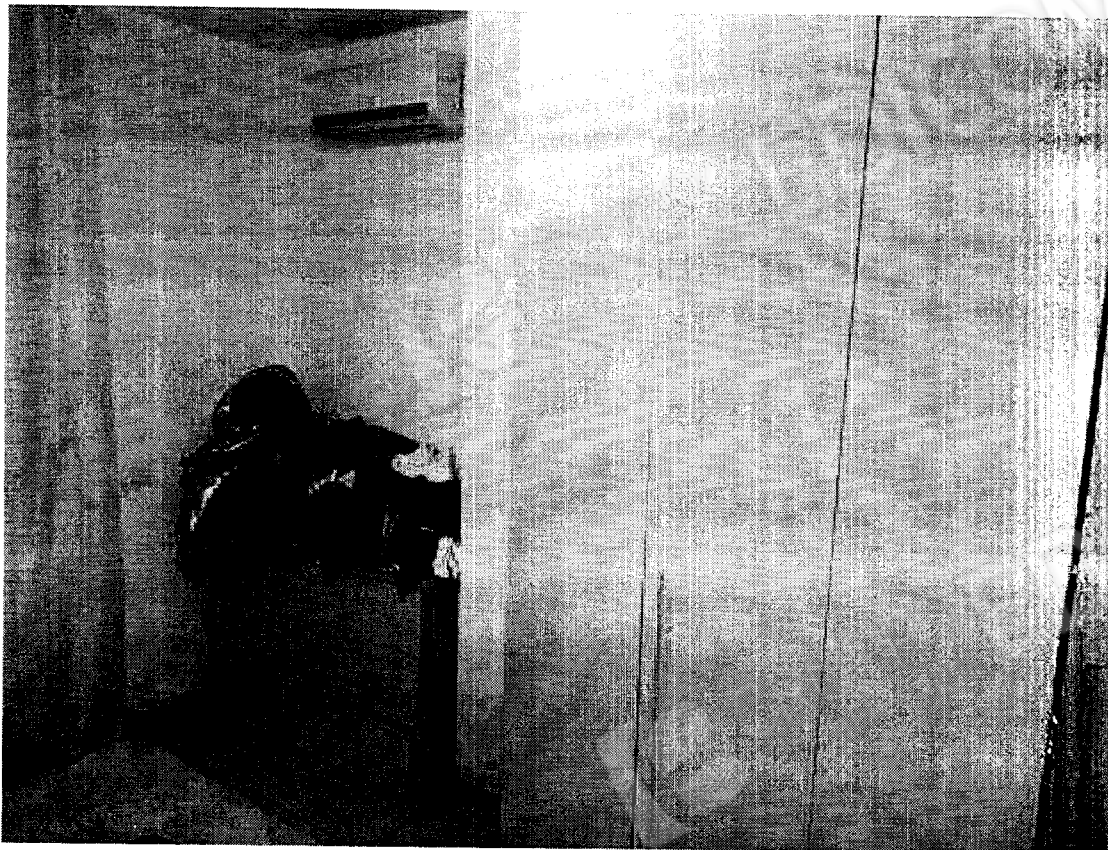


BAGNO GRANDE

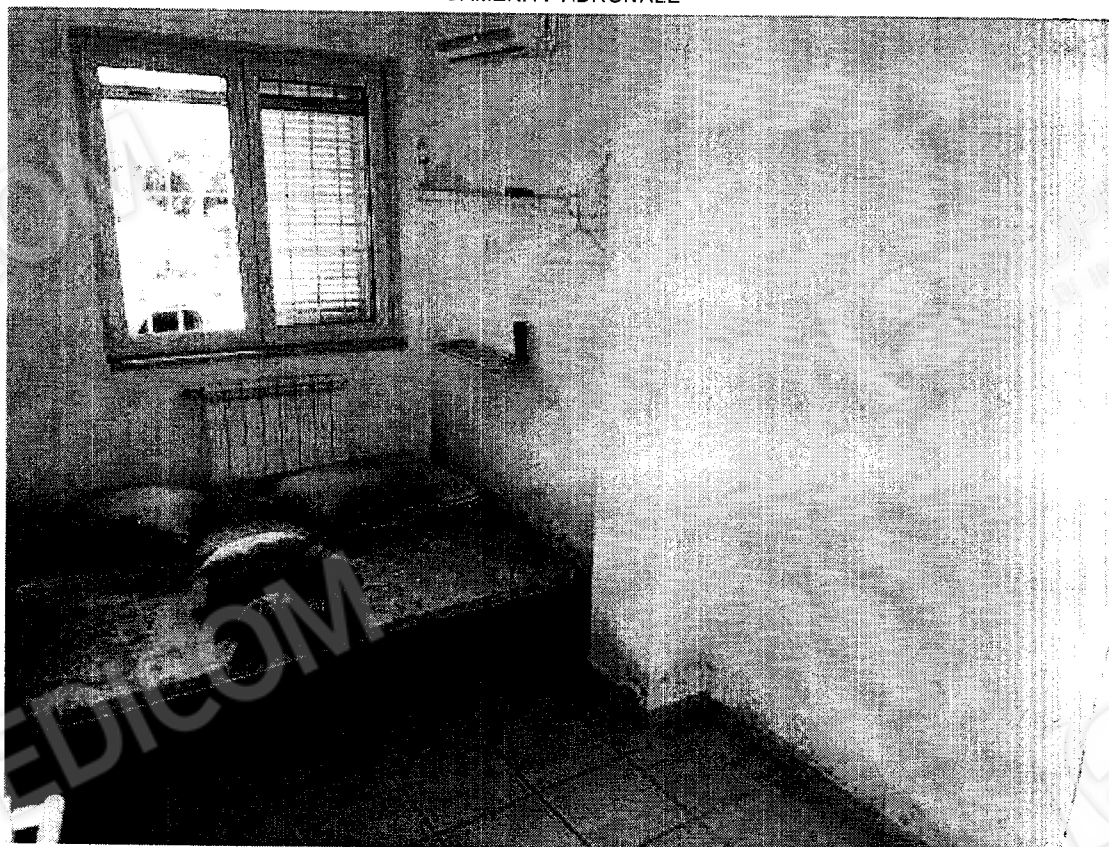


CAMERA PADRONALE





CAMERA PADRONALE



CAMERETTA



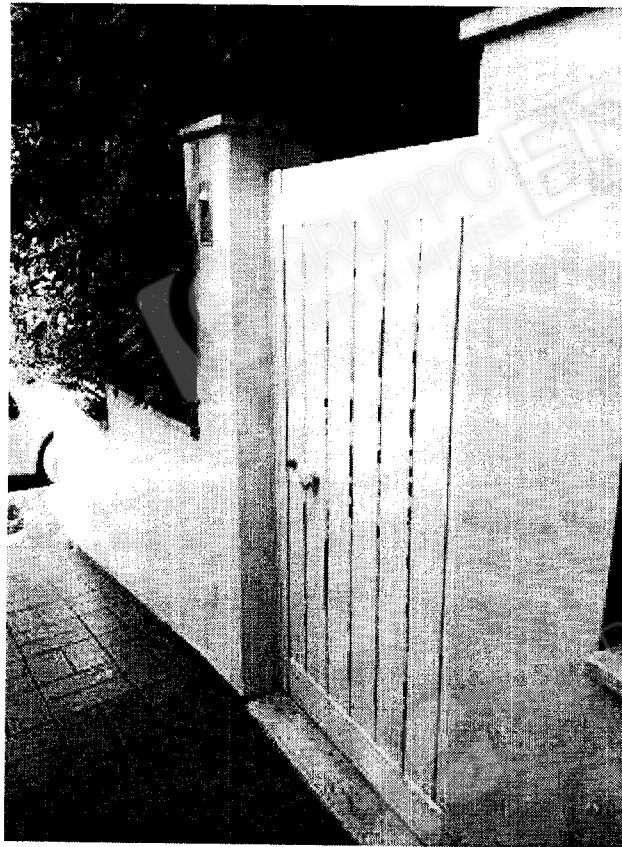


DISIMPEGNO



VISTA SU GIARDINO LATO MARE



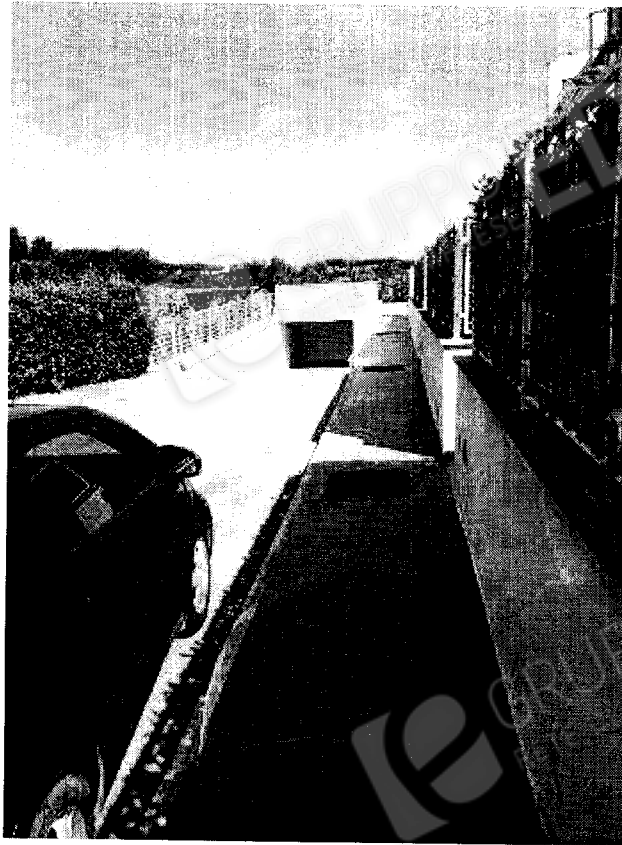


ACCESSO AL GIARDINO LATO MARE



GIARDINO LATO MARE





AREA ESTERNA

