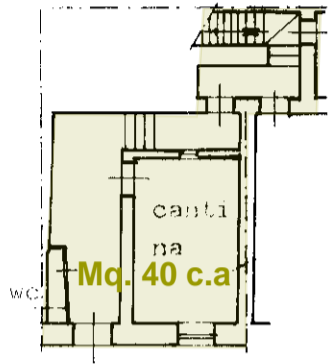


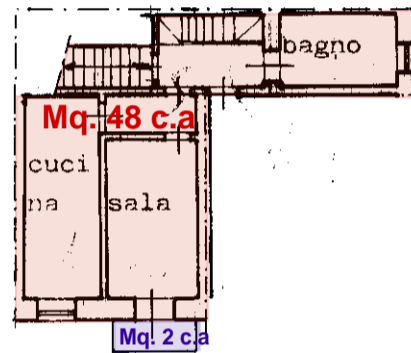
SUPERFICIE COMMERCIALE

Cantine Mq. 86 al 50% = Mq. 43
Abitativo Mq. 179 al 100% = Mq. 179
Balconi Mq. 10 al 33% = Mq. 3

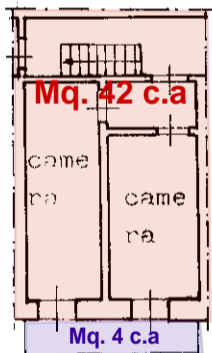
TOTALE SUPERFICIE COMMERCIALE MQ. 225



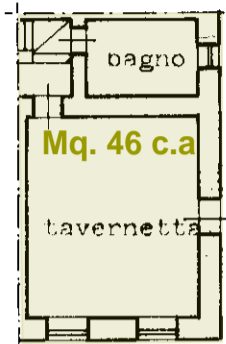
PIANTA PIANO TERRENO H=mt.2,95



PIANTA PIANO PRIMO H=mt.2,40



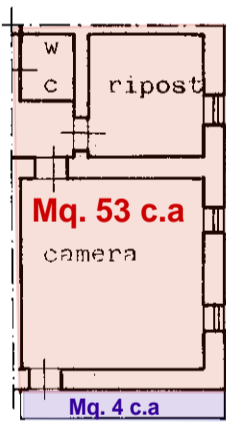
PIANTA PIANO SECONDO H=mt.2,20



PIANTA PIANO TERRENO H=mt.2,65



PIANTA PIANO PRIMO H=mt.



PIANTA PIANO SECONDO H=mt.2,20