

**SUPERFICIE COMMERCIALE**

Abitazione Mq. 166

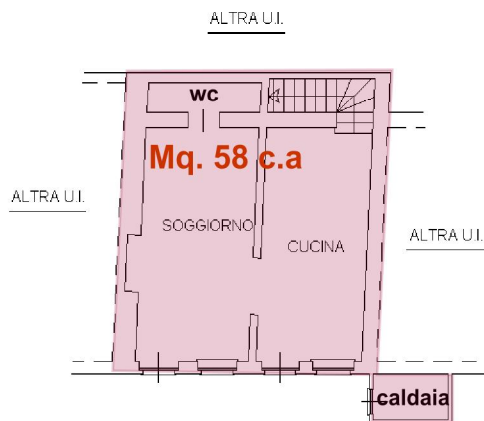
Balcone Mq. 6 al 33% = Mq. 2

**TOTALE MQ. 168**

**Superficie rimessa Mq. 68**

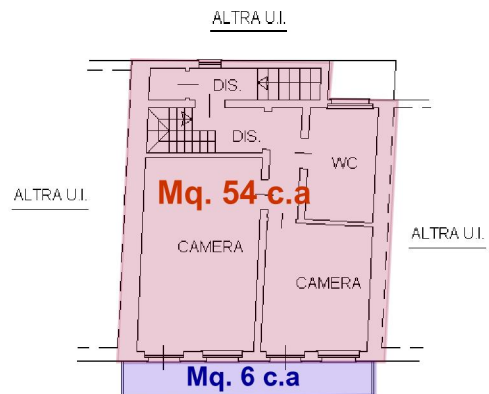
**PIANTA PIANO TERRA** scala 1:200

*H. media 2,50 m*



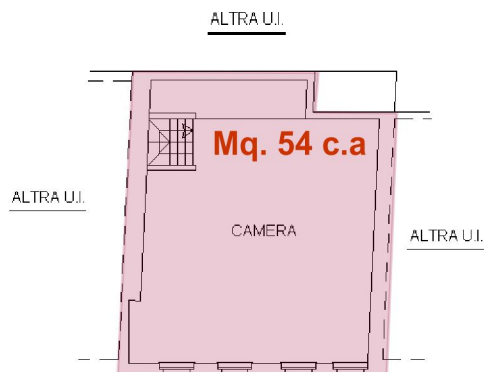
**PIANTA PIANO PRIMO** scala 1:200

*H. media 2,75 m*

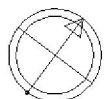


**PIANTA PIANO SECONDO (SOTTOTETTO)** scala 1:200

*H. media 2,40 m*

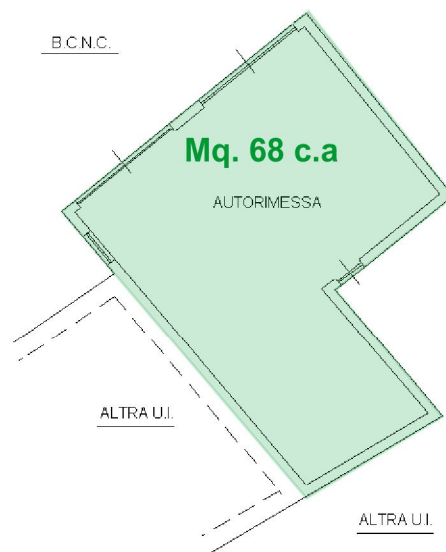


NORD



PIANTA PIANO TERRA

*H. media 3,45 m*



NORD

